

M.Y. ACRONIS FOUNTAIN 48 EC — FOUNTAIN



Builder: FOUNTAIN

Year Built: 2007

Model: high performance

Price: PRICE ON APPLICATION

Location: Singapore

LOA: 48' (14.63mm)

Beam: 12

Min Draft: 3' 6" (1.07mm)

Max Draft: 3' 10" (1.16mm)

Cruise Speed: 38 Knots Kts. (44 MPH)

Max Speed: 48 Knots Kts. (55 MPH)

Our experienced yacht broker, Andrey Shestakov, will help you choose and buy a yacht that best suits your needs **M.Y. ACRONIS FOUNTAIN 48 EC — FOUNTAIN** from our catalogue. Presently, at Shestakov Yacht Sales Inc., we have a wide variety of yachts available on our sale's list. We also work in close contact with all the big yacht manufacturers from all over the world.

If you would like to buy a yacht **M.Y. ACRONIS FOUNTAIN 48 EC — FOUNTAIN** or would like help answering any questions concerning purchasing, selling or chartering a yacht, please call **+1(954)274-4435**

TABLE OF CONTENTS

TABLE OF CONTENTS	2
SPECIFICATIONS	3
Overview	3
Basic Information	3
Dimensions	3
Speed, Capacities and Weight	4
Accommodations	4
Hull and Deck Information	4
Engine Information	4
PHOTOS	5
Bow	5
Stern view	5
Helm SB	5
Helm station	5
Facing forward	5
Outdoor lounge	5
Lounge facing PS	6
Lounge facing SB	6
Master Cabin	6
Head	6
Sunbed	6
Top view	6
CONTACTS	7
Contact details	7
Telephones	7
Office hours	7
Address	7

SPECIFICATIONS

Overview

“Owner is regrettable not spending enough time in Singapore, to use his favorite ‘toy’, and seriously would like to see someone else enjoying her. He insists keeping the name though, for the rest she comes with all the bells and whistles, including an enormous array of Spare Parts, Tools, Oils & Lubricants.”

Fountain's proven light weight performance stepped hull, upgraded with the preferred triple 480hp Cummins sets an entirely new standard for an offshore express cruiser. Fast on plane and a cruising range well over 400 miles at 50 mph. Hardtop with cockpit air-conditioning. Bow thruster. One stateroom with two heads, comfortable cherry wood salon and cherry wood dining table to seat eight. Galley with Corian countertop, stainless sink, full-size upright refrigerator/freezer. Teak and holly cabin floor. Cockpit blends Fountain's race-proven helm and heritage with expansive comfort and luxury entertaining. The cockpit lounge has removable table and seating for eight. Aft cockpit lounge has electric/hydraulic convertible sun pad.

Basic Information

Category: high performance	Sub Category: High Performance
Model Year: 2008	Year Built: 2007
Refit Type: New Recon engines (0 hours)	Country: Singapore

Dimensions

LOA: 48' (14.63mm)	Beam: 12
Min Draft: 3' 6" (1.07mm)	Max Draft: 3' 10" (1.16mm)

Speed, Capacities and Weight

Cruise Speed: 38 Knots Kts. (44 MPH)

Cruise Speed Range: 400

Max Speed: 48 Knots Kts. (55 MPH)

Gross Tonnage: 24000 Pounds

Water Capacity: 80 Gallons

Holding Tank: 36 Gal Gallons

Fuel Capacity: 340 Gal Gallons

Accommodations

Total Cabins: 1

Sleeps: 2

Total Heads: 2

Hull and Deck Information

Hull Material: FRP

Hull Configuration: Deep Vee

Hull Color: Blue wrap

Hull Designer: Reggie Fountain

Exterior Designer: Reggie Fountain

Interior Designer: Fountain Team

Engine Information

Engines: 3

Manufacturer: Cummins

Engine Type: Inboard

Fuel Type: Diesel

PHOTOS

Bow



Stern view



Helm station



Helm SB



Facing forward



Outdoor lounge



Lounge facing PS



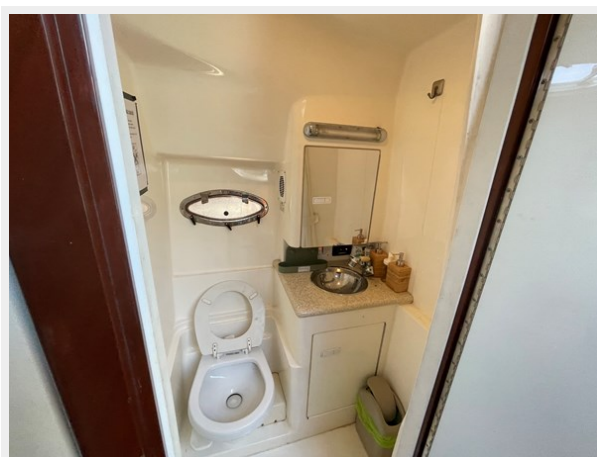
Lounge facing SB



Master Cabin



Head



Sunbed



Top view



CONTACTS

Andrey Shestakov, leading yacht broker of the sales department of Shestakov Yacht Sales Inc. Shestakov Yacht Sales Inc., the official representative of the Miami/Fort Lauderdale FL headquarters.

Contact details

Email:
andrey@shestakovyachtsales.com

Web: shestakovyachtsales.com/en/

Telephones

USA: **+1(954)274-4435**

Office hours

Monday – Saturday: **9:00 - 21:00 EDT**

Sunday: **closed**

Address



Harbour Towne Marina, 850 NE 3rd St,
STE 213, Dania, FL 33004