

FOUR PLAY — MAINSHIP



Builder: MAINSHIP

Year Built: 2001

Model: cruiser

Price: PRICE ON APPLICATION

Location: United States

LOA: 34' (10.36mm)

Beam: 12.25

Max Draft: 3' 3" (0.99mm)

Our experienced yacht broker, Andrey Shestakov, will help you choose and buy a yacht that best suits your needs **Four Play — MAINSHIP** from our catalogue. Presently, at Shestakov Yacht Sales Inc., we have a wide variety of yachts available on our sale's list. We also work in close contact with all the big yacht manufacturers from all over the world.

If you would like to buy a yacht **Four Play — MAINSHIP** or would like help answering any questions concerning purchasing, selling or chartering a yacht, please call **+1(954)274-4435**

TABLE OF CONTENTS

TABLE OF CONTENTS	2
SPECIFICATIONS	5
Overview	5
Basic Information	5
Dimensions	5
Speed, Capacities and Weight	5
Accommodations	5
Hull and Deck Information	6
Engine Information	6
PHOTOS	7
8860158_20230515114728369_1_XLARGE	7
8860158_20230515114744228_1_XLARGE	7
8860158_20230515114807407_1_XLARGE	7
8860158_20230515114748819_1_XLARGE	7
8860158_20230515114801666_1_XLARGE	7
8860158_20230515114752621_1_XLARGE	7
8860158_20230515114740343_1_XLARGE	8
8860158_20230515114756757_1_XLARGE	8
8860158_20230515114736527_1_XLARGE	8
8860158_20230515100004048_1_XLARGE	8
8860158_20230515095936925_1_XLARGE	8
8860158_20230515095941917_1_XLARGE	8
8860158_20230515095947236_1_XLARGE	9
8860158_20230515095951951_1_XLARGE	9
8860158_20230515095959079_1_XLARGE	9
8860158_20230515095953996_1_XLARGE	9
8860158_20230515101416016_1_XLARGE	9
8860158_20230515095931876_1_XLARGE	9

8860158_20230515100007093_1_XLARGE	10
8860158_20230515100011094_1_XLARGE	10
8860158_20230515100014214_1_XLARGE	10
8860158_20230515100021264_1_XLARGE	10
8860158_20230515100029490_1_XLARGE	10
8860158_20230515100034691_1_XLARGE	10
8860158_20230515100025429_1_XLARGE	11
8860158_20230515100039744_1_XLARGE	11
8860158_20230515100045378_1_XLARGE	11
8860158_20230515100055701_1_XLARGE	11
8860158_20230515100058610_1_XLARGE	11
8860158_20230515100105844_1_XLARGE	11
8860158_20230515100102597_1_XLARGE	12
8860158_20230515100120000_1_XLARGE	12
8860158_20230515100112808_1_XLARGE	12
8860158_20230515100108738_1_XLARGE	12
8860158_20230515100122928_1_XLARGE	12
8860158_20230515100138103_1_XLARGE	12
8860158_20230515100129964_1_XLARGE	13
8860158_20230515100126882_1_XLARGE	13
8860158_20230515100135961_1_XLARGE	13
8860158_20230515100133230_1_XLARGE	13
8860158_20230515100142132_1_XLARGE	13
8860158_20230515100115810_1_XLARGE	13
8860158_20230515100145122_1_XLARGE	14
8860158_20230515100148200_1_XLARGE	14
8860158_20230515100152163_1_XLARGE	14
8860158_20230515100243542_1_XLARGE	14
8860158_20230515100306877_1_XLARGE	14

8860158_20230515100256679_1_XLARGE	14
8860158_20230515100303842_1_XLARGE	15
8860158_20230515100310827_1_XLARGE	15
8860158_20230515100313819_1_XLARGE	15
8860158_20230515100320487_1_XLARGE	15
8860158_20230515114812280_1_XLARGE	15
8860158_20230515100317988_1_XLARGE	15
CONTACTS	16
Contact details	16
Telephones	16
Office hours	16
Address	16

SPECIFICATIONS

Overview

2000 34' Mainship Pilot with Awlgrip Green Hull

Yanmar 350HP Diesel only 1815 Hours, 3.5kW NexGen Generator, 4212 Garmin GPS/Chart, Sideshift Bow and Stern Thrusters, Raymarine Auto Pilot ST5000+, VacuFlush Head, Flat Screen TV, Teak Inlay in Forward Cabin, Oil Change System, Windlass.

This is a Very Nice Vessel

Basic Information

Category: cruiser

Sub Category: Downeast

Model Year: 2001

Year Built: 2001

Country: United States

Dimensions

LOA: 34' (10.36mm)

Beam: 12.25

Max Draft: 3' 3" (0.99mm)

Speed, Capacities and Weight

Water Capacity: 70 Gallons

Holding Tank: 20 Gal Gallons

Fuel Capacity: 250 Gal Gallons

Accommodations

Total Cabins: 1

Hull and Deck Information

Hull Material: Fiberglass

Engine Information

Engines: 1

Manufacturer: Yanmar

Engine Type: Inboard

Fuel Type: Diesel

PHOTOS

8860158_20230515114728369_1_XLARGE



8860158_20230515114744228_1_XLARGE



8860158_20230515114807407_1_XLARGE



8860158_20230515114748819_1_XLARGE



8860158_20230515114801666_1_XLARGE



8860158_20230515114752621_1_XLARGE



8860158_20230515114740343_1_XLARGE



8860158_20230515114756757_1_XLARGE



8860158_20230515114736527_1_XLARGE



8860158_20230515100004048_1_XLARGE



8860158_20230515095936925_1_XLARGE



8860158_20230515095941917_1_XLARGE



8860158_20230515095947236_1_XLARGE



8860158_20230515095951951_1_XLARGE



8860158_20230515095959079_1_XLARGE



8860158_20230515095953996_1_XLARGE



8860158_20230515101416016_1_XLARGE



8860158_20230515095931876_1_XLARGE



8860158_2023051510007093_1_XLARGE



8860158_20230515100011094_1_XLARGE



8860158_20230515100014214_1_XLARGE



8860158_20230515100021264_1_XLARGE



8860158_20230515100029490_1_XLARGE



8860158_20230515100034691_1_XLARGE



8860158_20230515100025429_1_XLARGE



8860158_20230515100039744_1_XLARGE



8860158_20230515100045378_1_XLARGE



8860158_20230515100055701_1_XLARGE



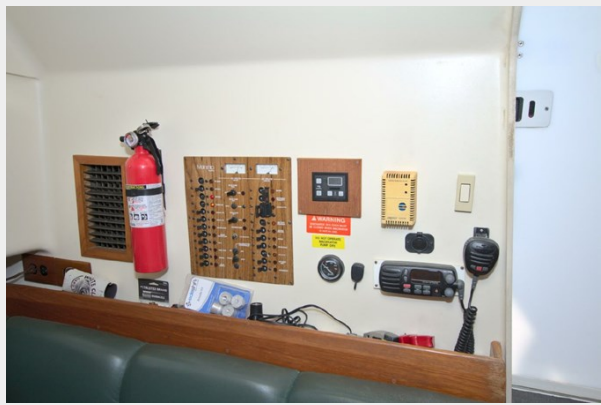
8860158_20230515100058610_1_XLARGE



8860158_20230515100105844_1_XLARGE



8860158_20230515100102597_1_XLARGE



8860158_20230515100120000_1_XLARGE



8860158_20230515100112808_1_XLARGE



8860158_20230515100108738_1_XLARGE



8860158_20230515100122928_1_XLARGE



8860158_20230515100138103_1_XLARGE



8860158_20230515100129964_1_XLARGE



8860158_20230515100126882_1_XLARGE



8860158_20230515100133230_1_XLARGE



8860158_20230515100135961_1_XLARGE

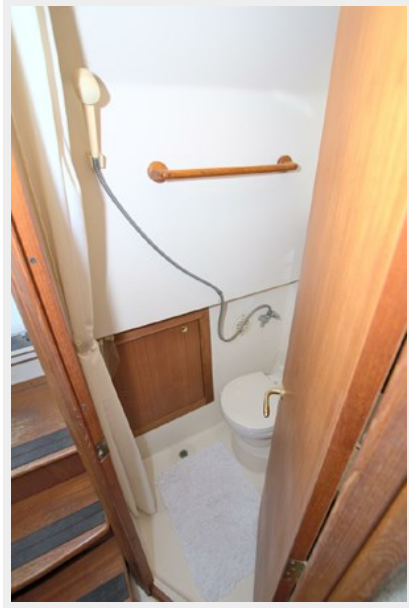


8860158_20230515100142132_1_XLARGE

8860158_20230515100115810_1_XLARGE



8860158_20230515100145122_1_XLARGE



8860158_20230515100148200_1_XLARGE



8860158_20230515100152163_1_XLARGE



8860158_20230515100243542_1_XLARGE



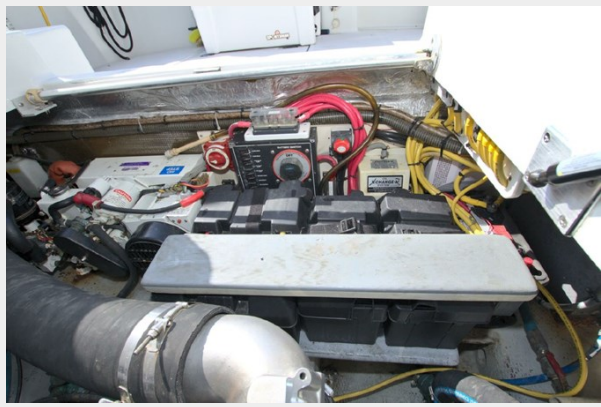
8860158_20230515100306877_1_XLARGE



8860158_20230515100256679_1_XLARGE



8860158_20230515100303842_1_XLARGE



8860158_20230515100310827_1_XLARGE



8860158_20230515100313819_1_XLARGE



8860158_20230515100320487_1_XLARGE



8860158_20230515100317988_1_XLARGE



8860158_20230515114812280_1_XLARGE



CONTACTS

Andrey Shestakov, leading yacht broker of the sales department of Shestakov Yacht Sales Inc. Shestakov Yacht Sales Inc., the official representative of the Miami/Fort Lauderdale FL headquarters.

Contact details

Email: andrey@shestakovyachtsales.com

Web: shestakovyachtsales.com/en/

Telephones

USA: +1(954)274-4435

Office hours

Monday – Saturday: **9:00 - 21:00** EDT

Sunday: **closed**

Address



Harbour Towne Marina, 850 NE 3rd St,
STE 213, Dania, FL 33004