

## BLACK POWDER — HATTERAS



**Builder:** HATTERAS

**Year Built:** 1976

**Model:** trawler

**Price:** PRICE ON APPLICATION

**Location:** United States

**LOA:** 48' (14.63mm)

**Beam:** 16.41

**Min Draft:** 4' 10" (1.47mm)

**Max Draft:** 4' 10" (1.47mm)

**Cruise Speed:** 8 Knots Kts. (9 MPH)

**Max Speed:** 9 Knots Kts. (10 MPH)

Our experienced yacht broker, Andrey Shestakov, will help you choose and buy a yacht that best suits your needs **Black Powder — HATTERAS** from our catalogue. Presently, at Shestakov Yacht Sales Inc., we have a wide variety of yachts available on our sale's list. We also work in close contact with all the big yacht manufacturers from all over the world.

If you would like to buy a yacht **Black Powder — HATTERAS** or would like help answering any questions concerning purchasing, selling or chartering a yacht, please call **+1(954)274-4435**

# TABLE OF CONTENTS

TABLE OF CONTENTS	2
SPECIFICATIONS	6
Overview	6
Basic Information	6
Dimensions	6
Speed, Capacities and Weight	6
Accommodations	6
Hull and Deck Information	6
Engine Information	6
PHOTOS	7
0_2799076_48_hatteras_starboard_forward_profile	7
1_2799076_48_hatteras_starboard_profile1	7
2_2799076_48_hatteras_starboard_profile2	7
3_2799076_48_hatteras_port_forward_profile	7
4_2799076_48_hatteras_port_profile	7
5_2799076_48_hatteras_anchor_windlass1	7
6_2799076_48_hatteras_anchor_windlass2	8
7_2799076_48_hatteras_foredeck	8
8_2799076_48_hatteras_foredeck_seating	8
9_2799076_48_hatteras_foredeck_aft	8
10_2799076_48_hatteras_port_side_deck1	8
11_2799076_48_hatteras_port_side_deck2	8
12_2799076_48_hatteras_port_side_deck3	9
13_2799076_48_hatteras_starboard_side_deck1	9
14_2799076_48_hatteras_starboard_side_deck2	9
15_2799076_48_hatteras_starboard_side_deck3	9
16_2799076_48_hatteras_flybridge_port	9
17_2799076_48_hatteras_flybridge_starboard	9

---

18_2799076_48_hatteras_flybridge_aft	10
19_2799076_48_hatteras_flybridge_helm1	10
20_2799076_48_hatteras_flybridge_helm2	10
21_2799076_48_hatteras_flybridge_helmseat	10
22_2799076_48_hatteras_flybridge_seating1	10
23_2799076_48_hatteras_flybridge_seating2	10
24_2799076_48_hatteras_tender_deck_forward	10
25_2799076_48_hatteras_tender_deck_aft1	10
26_2799076_48_hatteras_tender_deck_aft2	11
27_2799076_48_hatteras_tender_deck_seating	11
28_2799076_48_hatteras_tender	11
29_2799076_48_hatteras_tender_davit	11
30_2799076_48_hatteras_tender_outboard	11
31_2799076_48_hatteras_aftdeck_port	11
32_2799076_48_hatteras_aftdeck_starboard	12
33_2799076_48_hatteras_aftdeck_forward	12
34_2799076_48_hatteras_aftdeck_bbq_grill	12
35_2799076_48_hatteras_swimplatform	12
36_2799076_48_hatteras_gangway	12
37_2799076_48_hatteras_salon_forward	12
38_2799076_48_hatteras_salon_port	13
39_2799076_48_hatteras_salon_starboard	13
40_2799076_48_hatteras_salon_port_aft	13
41_2799076_48_hatteras_salon_starboard_forward	13
42_2799076_48_hatteras_salon_sofa	13
43_2799076_48_hatteras_galley1	13
44_2799076_48_hatteras_galley2	13
45_2799076_48_hatteras_galley3	13
46_2799076_48_hatteras_galley_dishwasher	14

---

---

47_2799076_48_hatteras_pilothouse_forward	14
48_2799076_48_hatteras_pilothouse_port	14
49_2799076_48_hatteras_pilothouse_starboard	14
50_2799076_48_hatteras_pilothouse_aft	14
51_2799076_48_hatteras_pilothouse_helm	14
52_2799076_48_hatteras_pilothouse_seating1	14
53_2799076_48_hatteras_pilothouse_seating2	14
55_2799076_48_hatteras_guest_companionway	15
54_2799076_48_hatteras_pilothouse_berth	15
56_2799076_48_hatteras_master_stateroom	15
57_2799076_48_hatteras_master_stateroom_port	15
58_2799076_48_hatteras_master_stateroom_starboard	15
59_2799076_48_hatteras_master_stateroom_forward	15
61_2799076_48_hatteras_master_stateroom_head	16
60_2799076_48_hatteras_master_stateroom_aft	16
62_2799076_48_hatteras_guest_stateroom1	16
63_2799076_48_hatteras_guest_stateroom2	16
64_2799076_48_hatteras_guest_stateroom_port	16
65_2799076_48_hatteras_guest_stateroom_starboard	16
66_2799076_48_hatteras_guest_stateroom_shower	17
67_2799076_48_hatteras_washer_dryer	17
68_2799076_48_hatteras_engine_room_forward	17
69_2799076_48_hatteras_engine_room_aft	17
70_2799076_48_hatteras_port_main_engine	17
71_2799076_48_hatteras_starboard_main_engine	17
73_2799076_48_hatteras_port_racor_fuel_filter	18
72_2799076_48_hatteras_fuel_manifold	18
74_2799076_48_hatteras_starboard_racor_fuel_filter	18
75_2799076_48_hatteras_water_heater	18

---

---

77_2799076_48_hatteras_electrical_panel1	18
76_2799076_48_hatteras_watermaker	18
78_2799076_48_hatteras_electrical_panel2	19
79_2799076_48_hatteras_electrical_panel3	19
80_2799076_48_hatteras_electrical_panel4	19
81_2799076_48_hatteras_engine_room_port_electrical_panel	19
82_2799076_48_hatteras_engine_room_starboard_electrical_panel	19
83_2799076_48_hatteras_generator_soundbox	19
84_2799076_48_hatteras_generator	20
85_2799076_48_hatteras_generator_racor_fuel_filter	20
87_2799076_48_hatteras_battery_charger	20
86_2799076_48_hatteras_inverter	20
88_2799076_48_hatteras_hauled_out	20
CONTACTS	21
Contact details	21
Telephones	21
Office hours	21
Address	21

---

# SPECIFICATIONS

---

## Overview

---

Black Powder is a 1976 48' Hatteras Long Range Cruiser (LRC) in very nice condition. She offers twin Detroit Diesel 112 HP naturally aspirated main engines, a new Northern Lights 16 kW generator, Xantrex Freedom 3,000 watt inverter, Gyro-Gale stabilizers, watermaker, Furuno electronics, AIS, custom tender deck wrap-around seating, raised pilothouse design and a two stateroom 2 head layout. Black Powder is bluewater cruising and Great Loop capable.

## Basic Information

---

**Category:** trawler **Model Year:** 1976  
**Year Built:** 1976 **Country:** United States

## Dimensions

---

**LOA:** 48' (14.63mm) **LWL:** 43' 4" (13.21mm)  
**Beam:** 16.41 **Min Draft:** 4' 10" (1.47mm)  
**Max Draft:** 4' 10" (1.47mm)

## Speed, Capacities and Weight

---

**Cruise Speed:** 8 Knots Kts. (9 MPH) **Max Speed:** 9 Knots Kts. (10 MPH)  
**Water Capacity:** 430 Gallons **Holding Tank:** 80 Gal Gallons  
**Fuel Capacity:** 1370 Gal Gallons

## Accommodations

---

**Total Cabins:** 2 **Total Heads:** 2

## Hull and Deck Information

---

**Hull Material:** Fiberglass

## Engine Information

---

**Engines:** 2 **Manufacturer:** Detroit Diesel  
**Engine Type:** Inboard **Fuel Type:** Diesel

# PHOTOS

0\_2799076\_48\_hatteras\_starboard\_forward\_profile



1\_2799076\_48\_hatteras\_starboard\_profile1



2\_2799076\_48\_hatteras\_starboard\_profile2



3\_2799076\_48\_hatteras\_port\_forward\_profile



4\_2799076\_48\_hatteras\_port\_profile



5\_2799076\_48\_hatteras\_anchor\_windlass1





6\_2799076\_48\_hatteras\_anchor\_windlass2



7\_2799076\_48\_hatteras\_foredeck



8\_2799076\_48\_hatteras\_foredeck\_seating



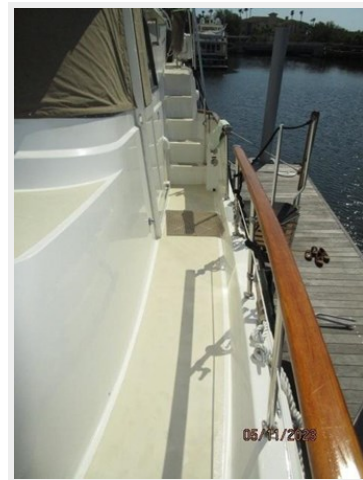
9\_2799076\_48\_hatteras\_foredeck\_aft



10\_2799076\_48\_hatteras\_port\_side\_deck1



11\_2799076\_48\_hatteras\_port\_side\_deck2





12\_2799076\_48\_hatteras\_port\_side\_deck3



13\_2799076\_48\_hatteras\_starboard\_side\_deck1



14\_2799076\_48\_hatteras\_starboard\_side\_deck2



15\_2799076\_48\_hatteras\_starboard\_side\_deck3



16\_2799076\_48\_hatteras\_flybridge\_port



17\_2799076\_48\_hatteras\_flybridge\_starboard



18\_2799076\_48\_hatteras\_flybridge\_aft



19\_2799076\_48\_hatteras\_flybridge\_helm1



20\_2799076\_48\_hatteras\_flybridge\_helm2



21\_2799076\_48\_hatteras\_flybridge\_helmseat



22\_2799076\_48\_hatteras\_flybridge\_seating1



23\_2799076\_48\_hatteras\_flybridge\_seating2



24\_2799076\_48\_hatteras\_tender\_deck\_forward



25\_2799076\_48\_hatteras\_tender\_deck\_aft





26\_2799076\_48\_hatteras\_tender\_deck\_aft2



27\_2799076\_48\_hatteras\_tender\_deck\_seating



28\_2799076\_48\_hatteras\_tender



29\_2799076\_48\_hatteras\_tender\_davit



30\_2799076\_48\_hatteras\_tender\_outboard



31\_2799076\_48\_hatteras\_aftdeck\_port



32\_2799076\_48\_hatteras\_aftdeck\_starboard



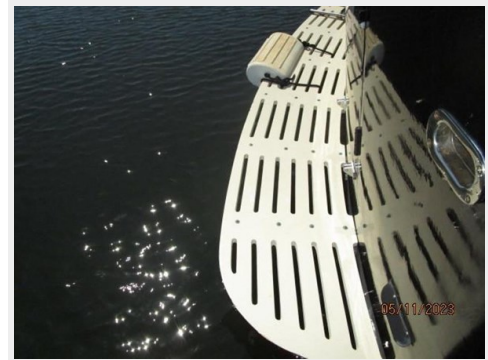
33\_2799076\_48\_hatteras\_aftdeck\_forward



34\_2799076\_48\_hatteras\_aftdeck\_bbq\_grill



35\_2799076\_48\_hatteras\_swimplatform



36\_2799076\_48\_hatteras\_gangway



37\_2799076\_48\_hatteras\_salon\_forward





38\_2799076\_48\_hatteras\_salon\_port



39\_2799076\_48\_hatteras\_salon\_starboard



40\_2799076\_48\_hatteras\_salon\_port\_aft



41\_2799076\_48\_hatteras\_salon\_starboard\_forward



42\_2799076\_48\_hatteras\_salon\_sofa



43\_2799076\_48\_hatteras\_galley1



44\_2799076\_48\_hatteras\_galley2



45\_2799076\_48\_hatteras\_galley3



46\_2799076\_48\_hatteras\_galley\_dishwasher



47\_2799076\_48\_hatteras\_pilothouse\_forward



48\_2799076\_48\_hatteras\_pilothouse\_port



49\_2799076\_48\_hatteras\_pilothouse\_starboard



50\_2799076\_48\_hatteras\_pilothouse\_aft



51\_2799076\_48\_hatteras\_pilothouse\_helm



52\_2799076\_48\_hatteras\_pilothouse\_seating1



53\_2799076\_48\_hatteras\_pilothouse\_seating2

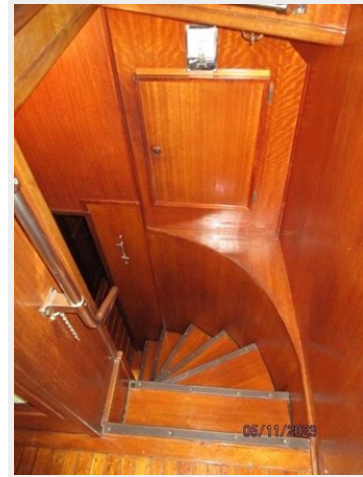




54\_2799076\_48\_hatteras\_pilothouse\_berth



55\_2799076\_48\_hatteras\_guest\_companionway



56\_2799076\_48\_hatteras\_master\_stateroom



57\_2799076\_48\_hatteras\_master\_stateroom\_port



58\_2799076\_48\_hatteras\_master\_stateroom\_starboard

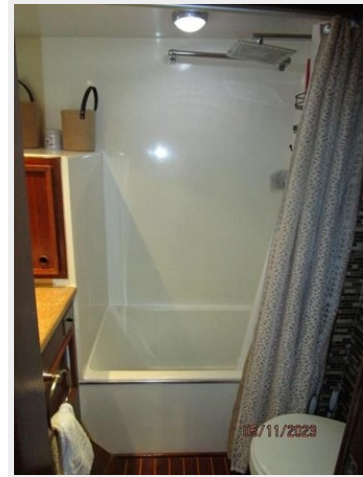


59\_2799076\_48\_hatteras\_master\_stateroom\_forward





61\_2799076\_48\_hatteras\_master\_stateroom\_head



60\_2799076\_48\_hatteras\_master\_stateroom\_apt



62\_2799076\_48\_hatteras\_guest\_stateroom1



63\_2799076\_48\_hatteras\_guest\_stateroom2



64\_2799076\_48\_hatteras\_guest\_stateroom\_port



65\_2799076\_48\_hatteras\_guest\_stateroom\_starboard



66\_2799076\_48\_hatteras\_guest\_stateroom\_shower



67\_2799076\_48\_hatteras\_washer\_dryer



68\_2799076\_48\_hatteras\_engine\_room\_forward



69\_2799076\_48\_hatteras\_engine\_room\_aft



70\_2799076\_48\_hatteras\_port\_main\_engine



71\_2799076\_48\_hatteras\_starboard\_main\_engine





73\_2799076\_48\_hatteras\_port\_racor\_fuel\_filter



72\_2799076\_48\_hatteras\_fuel\_manifold



74\_2799076\_48\_hatteras\_starboard\_racor\_fuel\_filter



75\_2799076\_48\_hatteras\_water\_heater



77\_2799076\_48\_hatteras\_electrical\_panel1



76\_2799076\_48\_hatteras\_watermaker



78\_2799076\_48\_hatteras\_electrical\_panel2



79\_2799076\_48\_hatteras\_electrical\_panel3



80\_2799076\_48\_hatteras\_electrical\_panel4



81\_2799076\_48\_hatteras\_engine\_room\_port\_electrical\_panel



82\_2799076\_48\_hatteras\_engine\_room\_starboard\_electrical\_panel 83\_2799076\_48\_hatteras\_generator\_soundbox





84\_2799076\_48\_hatteras\_generator



85\_2799076\_48\_hatteras\_generator\_racor\_fuel\_filter



86\_2799076\_48\_hatteras\_inverter



87\_2799076\_48\_hatteras\_battery\_charger



88\_2799076\_48\_hatteras\_hauled\_out



---

## CONTACTS

---

Andrey Shestakov, leading yacht broker of the sales department of Shestakov Yacht Sales Inc. Shestakov Yacht Sales Inc., the official representative of the Miami/Fort Lauderdale FL headquarters.

---

### Contact details

---

Email:  
[andrey@shestakovyachtsales.com](mailto:andrey@shestakovyachtsales.com)

Web: [shestakovyachtsales.com/en/](http://shestakovyachtsales.com/en/)

---

### Telephones

---

USA: +1(954)274-4435

---

### Office hours

---

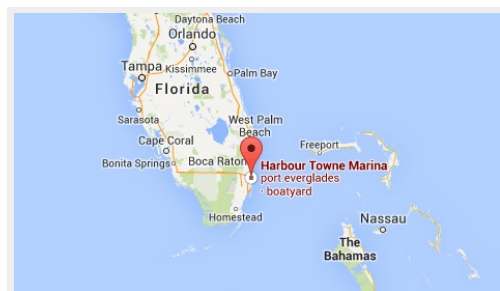
Monday – Saturday: **9:00 - 21:00 EDT**

Sunday: **closed**

---

### Address

---



Harbour Towne Marina, 850 NE 3rd St,  
STE 213, Dania, FL 33004