

## REEL FISH — HATTERAS



**Builder:** HATTERAS

**Year Built:** 1980

**Model:** Sport Fisherman

**Price:** PRICE ON APPLICATION

**Location:** United States

**LOA:** 50' (15.24mm)

**Beam:** 16.33

**Max Draft:** 4' 6" (1.37mm)

**Cruise Speed:** 18 Knots Kts. (21 MPH)

**Max Speed:** 22 Knots Kts. (25 MPH)

Our experienced yacht broker, Andrey Shestakov, will help you choose and buy a yacht that best suits your needs **REEL FISH — HATTERAS** from our catalogue. Presently, at Shestakov Yacht Sales Inc., we have a wide variety of yachts available on our sale's list. We also work in close contact with all the big yacht manufacturers from all over the world.

If you would like to buy a yacht **REEL FISH — HATTERAS** or would like help answering any questions concerning purchasing, selling or chartering a yacht, please call **+1(954)274-4435**

# TABLE OF CONTENTS

TABLE OF CONTENTS	2
SPECIFICATIONS	4
Basic Information	4
Dimensions	4
Speed, Capacities and Weight	4
Accommodations	4
Hull and Deck Information	4
Engine Information	5
PHOTOS	6
Salon looking aft	6
Salon - TV on port side	6
Salon stbd aft seating	6
Looking forward from Salon	6
Galley and steps down to cabins	6
Galley	6
Accommodation Companionway	7
SubZero frig freezer across from Galley	7
Port side cabin	7
Port side head	7
Port side shower	8
Master	8
Master head	8
Forward stateroom	8
Helm	9
Helm and helm chairs	9
Helm looking forward	9
Flybridge forward seating area	9
Engine room looking aft	9

---

Flybridge electronics above Helm	9
Engine room	10
Engine room	10
Northern Lights generator	10
Engine room - DD motor	10
Engine room - electrical panel	11
Engine room	11
Engine room	11
Cockpit	11
Cockpit control	12
Cockpit and stern	12
Tower	12
CONTACTS	13
Contact details	13
Telephones	13
Office hours	13
Address	13

---

# SPECIFICATIONS

---

## Basic Information

---

**Category:** Sport Fisherman

**Model Year:** 1980

**Year Built:** 1980

**Country:** United States

## Dimensions

---

**LOA:** 50' (15.24mm)

**Beam:** 16.33

**Max Draft:** 4' 6" (1.37mm)

## Speed, Capacities and Weight

---

**Cruise Speed:** 18 Knots Kts. (21 MPH)

**Max Speed:** 22 Knots Kts. (25 MPH)

**Water Capacity:** 185 Gallons

**Fuel Capacity:** 1065 Gal Gallons

## Accommodations

---

**Total Cabins:** 3

**Sleeps:** 6

**Total Heads:** 2

## Hull and Deck Information

---

**Hull Material:** Fiberglass

**Hull Configuration:** Modified V-Hull

**Hull Designer:** Hatteras

---

## Engine Information

---

**Engines:** 2

**Manufacturer:** Detroit Diesel

**Engine Type:** Inboard

**Fuel Type:** Diesel

# PHOTOS

Salon looking aft



Salon - TV on port side



Salon stbd aft seating



Looking forward from Salon



Galley and steps down to cabins



Galley





## Accommodation Companionway

### SubZero frig freezer across from Galley



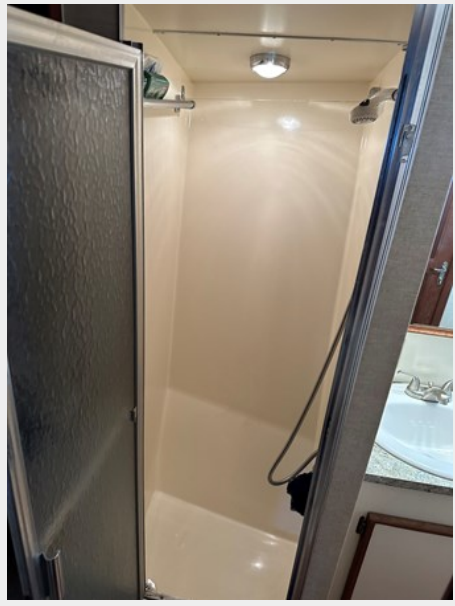
### Port side cabin



### Port side head



**Port side shower**



**Master**



**Master head**



**Forward stateroom**





**Helm**



**Helm and helm chairs**



**Helm looking forward**



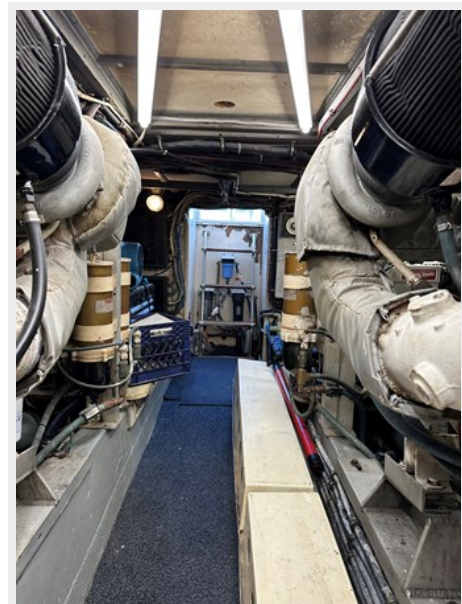
**Flybridge forward seating area**



**Flybridge electronics above Helm**

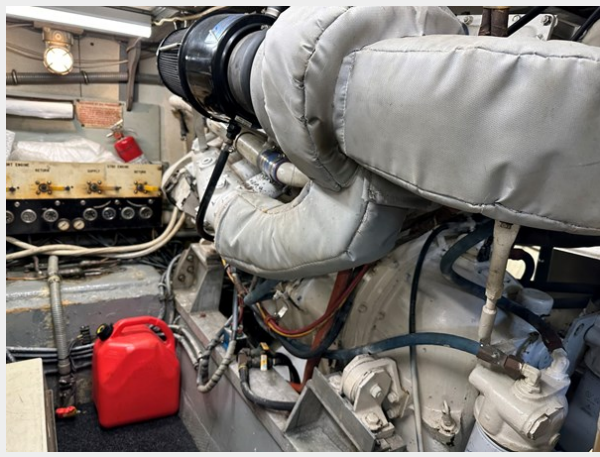


**Engine room looking aft**

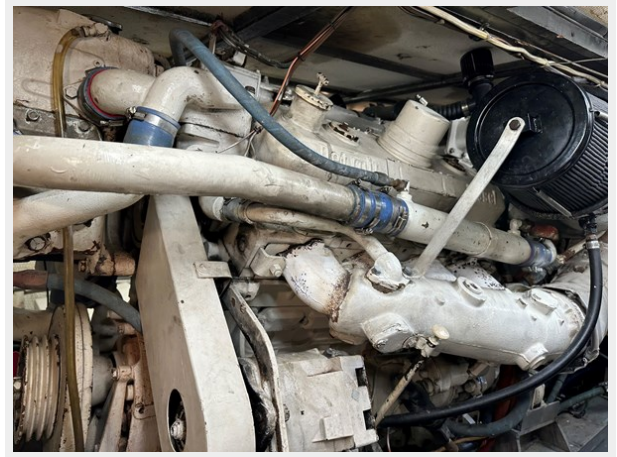




**Engine room**

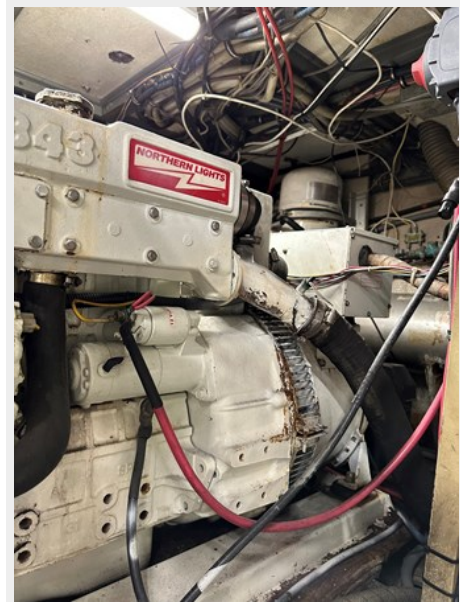
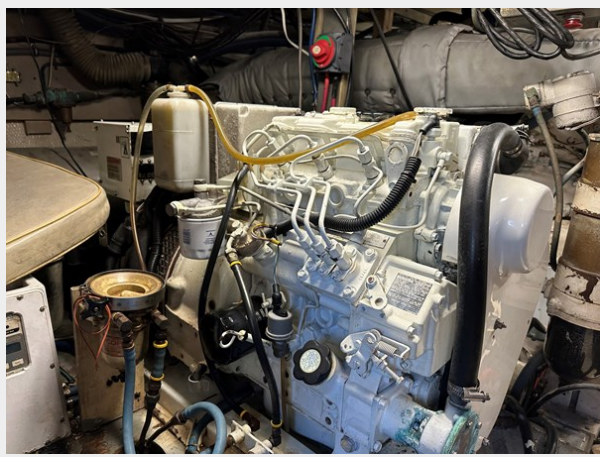


**Engine room**

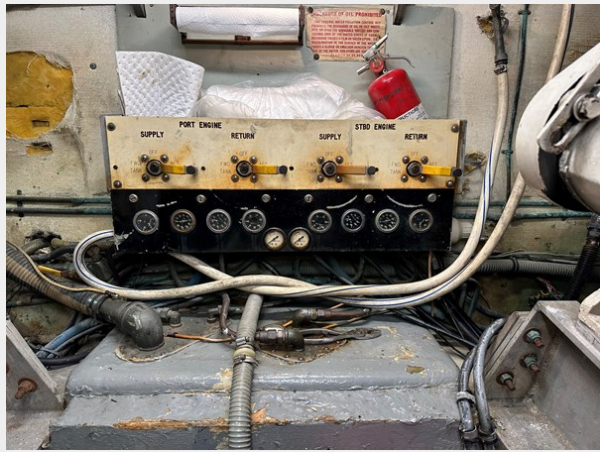


**Northern Lights generator**

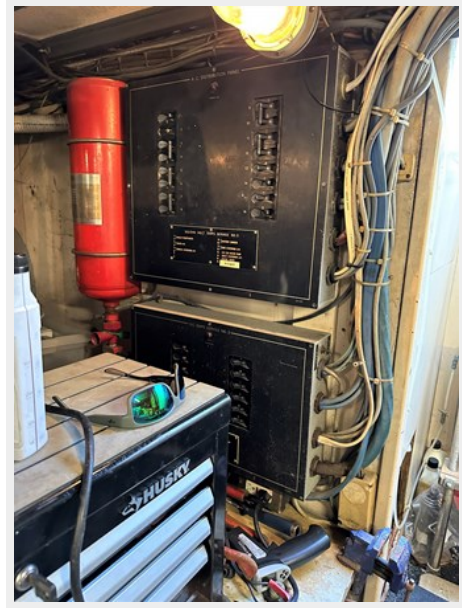
**Engine room - DD motor**



**Engine room**



**Engine room - electrical panel**



**Engine room**



**Cockpit**





### Cockpit control



### Cockpit and stern



### Tower





# CONTACTS

---

Andrey Shestakov, leading yacht broker of the sales department of Shestakov Yacht Sales Inc. Shestakov Yacht Sales Inc., the official representative of the Miami/Fort Lauderdale FL headquarters.

## Contact details

---

Email: [andrey@shestakovyachtsales.com](mailto:andrey@shestakovyachtsales.com)

Web: [shestakovyachtsales.com/en/](http://shestakovyachtsales.com/en/)

## Telephones

---

USA: +1(954)274-4435

## Office hours

---

Monday – Saturday: **9:00 - 21:00** EDT

Sunday: **closed**

## Address

---



Harbour Towne Marina, 850 NE 3rd St,  
STE 213, Dania, FL 33004