

PRINCESS KATE — AZIMUT YACHTS



Builder: [AZIMUT YACHTS](#)

Year Built: 2022

Model: high performance

Price: PRICE ON APPLICATION

Location: United States

LOA: 47' 6" (14.48mm)

Beam: 14

Min Draft: 3' 5" (1.04mm)

Cruise Speed: 40 Knots Kts. (46 MPH)

Max Speed: 50 Knots Kts. (58 MPH)

Our experienced yacht broker, Andrey Shestakov, will help you choose and buy a yacht that best suits your needs **PRINCESS KATE — AZIMUT YACHTS** from our catalogue. Presently, at Shestakov Yacht Sales Inc., we have a wide variety of yachts available on our sale's list. We also work in close contact with all the big yacht manufacturers from all over the world.

If you would like to buy a yacht **PRINCESS KATE — AZIMUT YACHTS** or would like help answering any questions concerning purchasing, selling or chartering a yacht, please call **+1(954)274-4435**

TABLE OF CONTENTS

TABLE OF CONTENTS	2
SPECIFICATIONS	5
Overview	5
Basic Information	5
Dimensions	5
Speed, Capacities and Weight	5
Accommodations	5
Hull and Deck Information	6
Engine Information	6
PHOTOS	7
A571A874-2181-4EC7-ACE1-7D13E182DD1C	7
IMG_1353	7
8315209_20220511093253059_1_XLARGE	7
8315209_20220511093257946_1_XLARGE	7
8315209_20220511093302816_1_XLARGE	8
8315209_20220511093308086_1_XLARGE	8
8315209_20220511093314163_1_XLARGE	8
8315209_20220511093320160_1_XLARGE	8
8315209_20220511093326176_1_XLARGE	8
8315209_20220511093332400_1_XLARGE	8
8315209_20220511093342470_1_XLARGE	9
8315209_20220511093338072_1_XLARGE	9
8315209_20220511094112213_1_XLARGE	9
8315209_20220511094117244_1_XLARGE	9
8315209_20220511094122879_1_XLARGE	9
8315209_20220511094127180_1_XLARGE	9
8315209_20220511094132103_1_XLARGE	10
8315209_20220511094137307_1_XLARGE	10

8315209_20220511094142070_1_XLARGE	10
8315209_20220511094147147_1_XLARGE	10
8315209_20220511094152250_1_XLARGE	10
8315209_20220511094157212_1_XLARGE	10
8315209_20220511094207181_1_XLARGE	10
8315209_20220511094212291_1_XLARGE	10
8315209_20220511094830720_1_XLARGE	11
8315209_20220511094217285_1_XLARGE	11
8315209_20220511094836765_1_XLARGE	11
8315209_20220511094841932_1_XLARGE	11
8315209_20220511094846728_1_XLARGE	11
8315209_20220511094851801_1_XLARGE	11
8315209_20220511094858324_1_XLARGE	12
8315209_20220511094904091_1_XLARGE	12
8315209_20220511094910199_1_XLARGE	12
8315209_20220511094917109_1_XLARGE	12
8315209_20220511094922743_1_XLARGE	12
8315209_20220511094927746_1_XLARGE	12
8315209_20220511094933883_1_XLARGE	13
8315209_20220511094939620_1_XLARGE	13
8315209_20220511094944809_1_XLARGE	13
8315209_20220511094956470_1_XLARGE	13
8315209_20220511095007777_1_XLARGE	13
8315209_20220511095012647_1_XLARGE	13
8315209_20220511095017639_1_XLARGE	14
8315209_20220511095022582_1_XLARGE	14
8315209_20220511095027523_1_XLARGE	14
8315209_20220511095032995_1_XLARGE	14
8315209_20220511095039594_1_XLARGE	14

8315209_20220511095045554_1_XLARGE	14
8315209_20220511095051864_1_XLARGE	15
8315209_20220511095059770_1_XLARGE	15
8315209_20220511095104828_1_XLARGE	15
CONTACTS	16
Contact details	16
Telephones	16
Office hours	16
Address	16

SPECIFICATIONS

Overview

N/A

Basic Information

Category: high performance

Sub Category: High Performance

Model Year: 2022

Year Built: 2022

Country: United States

Dimensions

LOA: 47' 6" (14.48mm)

Beam: 14

Min Draft: 3' 5" (1.04mm)

Speed, Capacities and Weight

Cruise Speed: 40 Knots Kts. (46 MPH)

Cruise Speed Range: 230

Max Speed: 50 Knots Kts. (58 MPH)

Gross Tonnage: 13 Pounds

Water Capacity: 300 Gallons

Holding Tank: 200 Gal Gallons

Fuel Capacity: 620 Gal Gallons

Accommodations

Total Cabins: 2

Total Berths: 2

Sleeps: 6

Total Heads: 1

Hull and Deck Information

Hull Material: Fiberglass

Deck Material: NuTeak

Engine Information

Engines: 4

Manufacturer: Mercury

Engine Type: Outboard

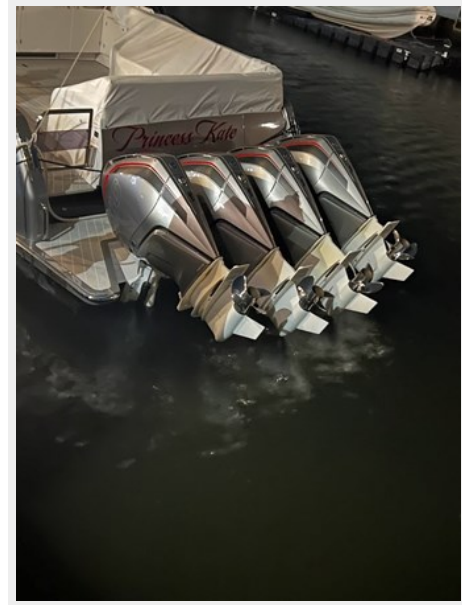
Fuel Type: Gas

PHOTOS

A571A874-2181-4EC7-ACE1-7D13E182DD1C



IMG_1353



8315209_20220511093253059_1_XLARGE



8315209_20220511093257946_1_XLARGE



8315209_20220511093302816_1_XLARGE



8315209_20220511093308086_1_XLARGE



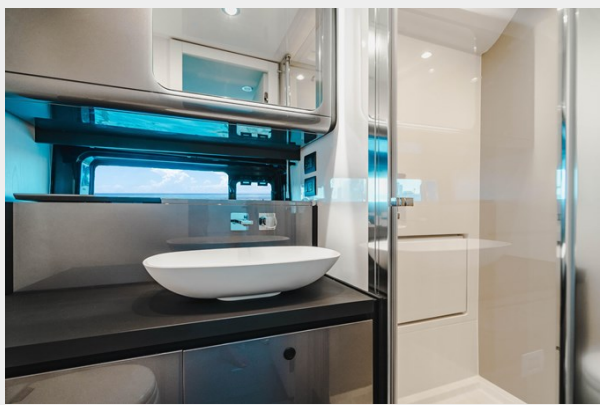
8315209_20220511093314163_1_XLARGE



8315209_20220511093320160_1_XLARGE



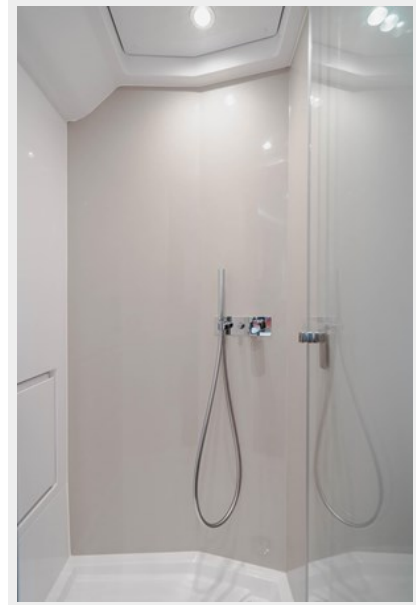
8315209_20220511093326176_1_XLARGE



8315209_20220511093332400_1_XLARGE



8315209_20220511093342470_1_XLARGE



8315209_20220511093338072_1_XLARGE



8315209_20220511094112213_1_XLARGE



8315209_20220511094117244_1_XLARGE



8315209_20220511094122879_1_XLARGE



8315209_20220511094127180_1_XLARGE



8315209_20220511094132103_1_XLARGE



8315209_20220511094137307_1_XLARGE



8315209_20220511094142070_1_XLARGE



8315209_20220511094147147_1_XLARGE



8315209_20220511094152250_1_XLARGE



8315209_20220511094157212_1_XLARGE



8315209_20220511094207181_1_XLARGE



8315209_20220511094212291_1_XLARGE



8315209_20220511094217285_1_XLARGE



8315209_20220511094830720_1_XLARGE



8315209_20220511094836765_1_XLARGE



8315209_20220511094841932_1_XLARGE



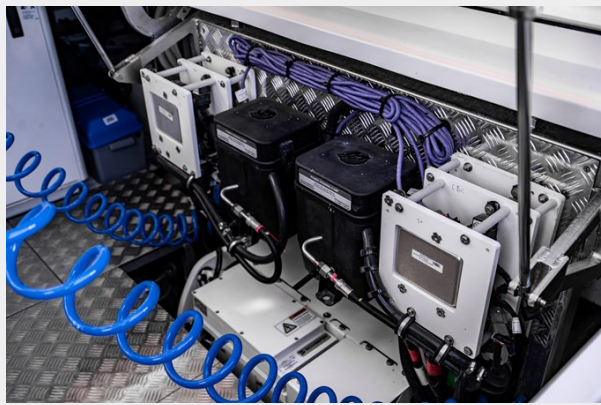
8315209_20220511094846728_1_XLARGE



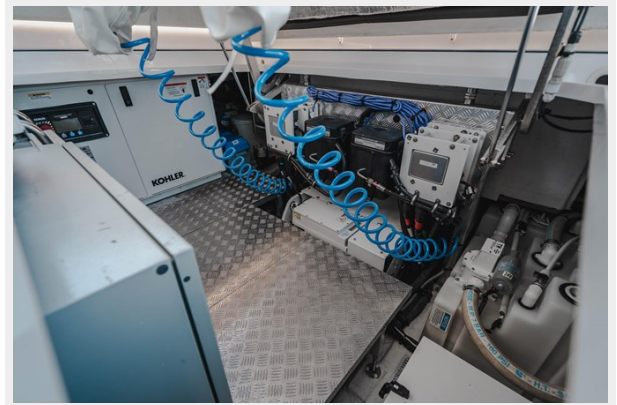
8315209_20220511094851801_1_XLARGE



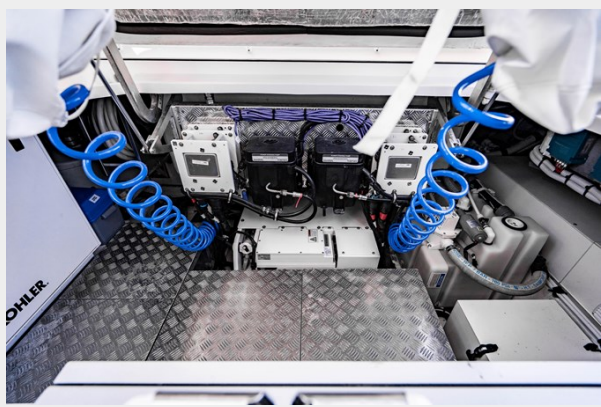
8315209_20220511094858324_1_XLARGE



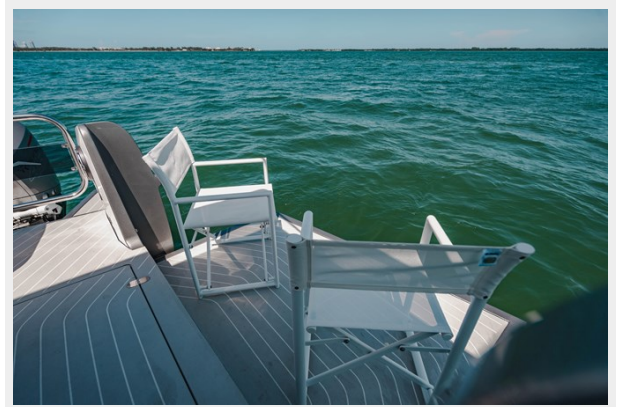
8315209_20220511094904091_1_XLARGE



8315209_20220511094910199_1_XLARGE



8315209_20220511094917109_1_XLARGE



8315209_20220511094922743_1_XLARGE



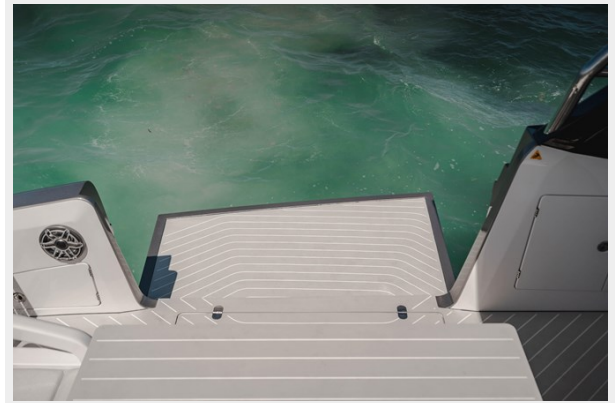
8315209_20220511094927746_1_XLARGE



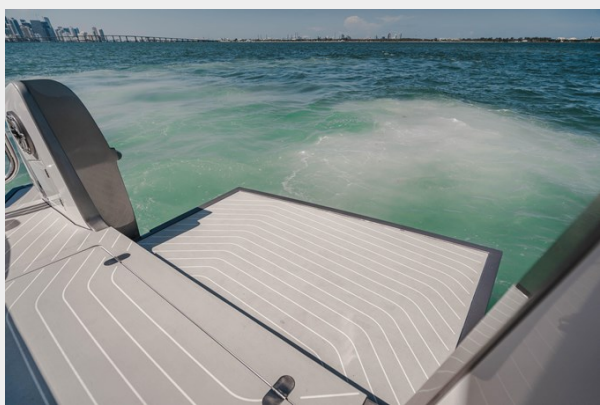
8315209_20220511094933883_1_XLARGE



8315209_20220511094939620_1_XLARGE



8315209_20220511094944809_1_XLARGE



8315209_20220511094956470_1_XLARGE



8315209_20220511095007777_1_XLARGE



8315209_20220511095012647_1_XLARGE



8315209_20220511095017639_1_XLARGE



8315209_20220511095022582_1_XLARGE



8315209_20220511095027523_1_XLARGE



8315209_20220511095032995_1_XLARGE



8315209_20220511095039594_1_XLARGE



8315209_20220511095045554_1_XLARGE

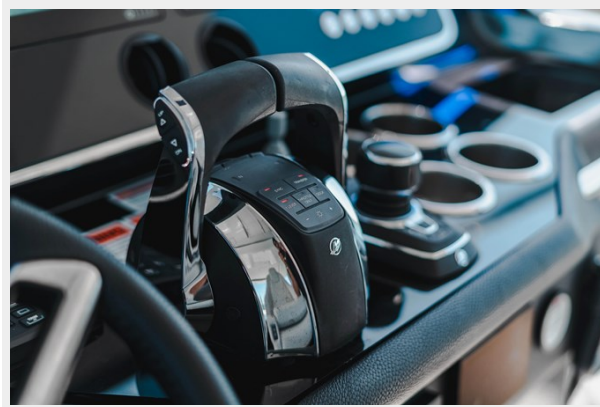


8315209_20220511095051864_1_XLARGE

8315209_20220511095059770_1_XLARGE



8315209_20220511095104828_1_XLARGE



CONTACTS

Andrey Shestakov, leading yacht broker of the sales department of Shestakov Yacht Sales Inc. Shestakov Yacht Sales Inc., the official representative of the Miami/Fort Lauderdale FL headquarters.

Contact details

Email: andrey@shestakovyachtsales.com

Web: shestakovyachtsales.com/en/

Telephones

USA: +1(954)274-4435

Office hours

Monday – Saturday: **9:00 - 21:00** EDT

Sunday: **closed**

Address



Harbour Towne Marina, 850 NE 3rd St,
STE 213, Dania, FL 33004