

IRISH LADY — OUTERBANKS BOATWORKS



Builder: OUTERBANKS BOATWORKS

Year Built: 2005

Model: center_console

Price: PRICE ON APPLICATION

Location: United States

LOA: 22' (6.71mm)

Beam: 10

Min Draft: 0' 10" (0.25mm)

Cruise Speed: 30 Knots Kts. (35 MPH)

Max Speed: 40 Knots Kts. (46 MPH)

Our experienced yacht broker, Andrey Shestakov, will help you choose and buy a yacht that best suits your needs **Irish Lady — OUTERBANKS BOATWORKS** from our catalogue. Presently, at **Shestakov Yacht Sales Inc.**, we have a wide variety of yachts available on our sale's list. We also work in close contact with all the big yacht manufacturers from all over the world.

If you would like to buy a yacht **Irish Lady — OUTERBANKS BOATWORKS** or would like help answering any questions concerning purchasing, selling or chartering a yacht, please call **+1(954)274-4435**

TABLE OF CONTENTS

| | |
|------------------------------|----|
| TABLE OF CONTENTS | 2 |
| SPECIFICATIONS | 3 |
| Overview | 3 |
| Basic Information | 3 |
| Dimensions | 3 |
| Speed, Capacities and Weight | 3 |
| Hull and Deck Information | 3 |
| Engine Information | 4 |
| PHOTOS | 5 |
| CONTACTS | 14 |
| Contact details | 14 |
| Telephones | 14 |
| Office hours | 14 |
| Address | 14 |

SPECIFICATIONS

Overview

2005 Custom Carolina/Outerbanks Boatworks

- This is a jewel of a boat built by Billy Dupree on Harkers Island, NC.
- Glass over wood.
- Cedar framed with Juniper strips, teak deck and toe rail
- Great ride in excellent condition.
- Boat has been kept in shed and Captain maintained.
- 2021 Amertrail Trailer.
- Willing to negotiate price without motor.

Basic Information

Category: center_console

Sub Category: Center Console

Model Year: 2005

Year Built: 2005

Country: United States

Dimensions

LOA: 22' (6.71mm)

LWL: 22' (6.71mm)

Beam: 10

Min Draft: 0' 10" (0.25mm)

Speed, Capacities and Weight

Cruise Speed: 30 Knots Kts. (35 MPH)

Max Speed: 40 Knots Kts. (46 MPH)

Water Capacity: 15 Gallons

Fuel Capacity: 60 Gal Gallons

Hull and Deck Information

Hull Material: Wood

Engine Information

Engines: 1

Manufacturer: Yamaha

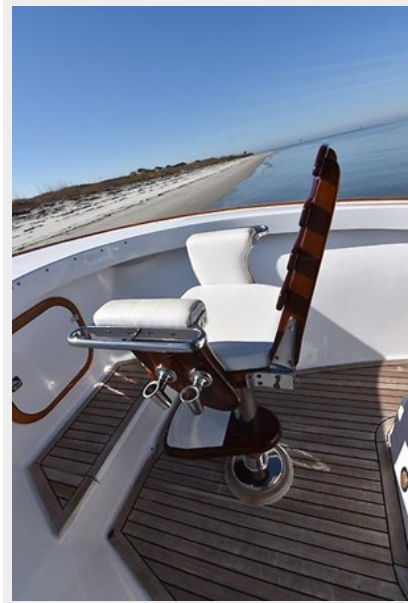
Engine Type: Outboard

Fuel Type: Gas/Petrol

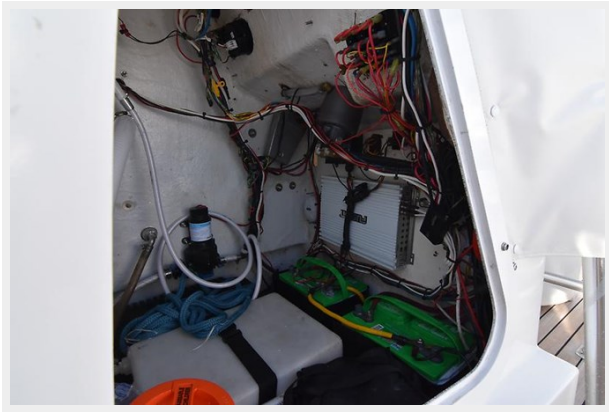
PHOTOS

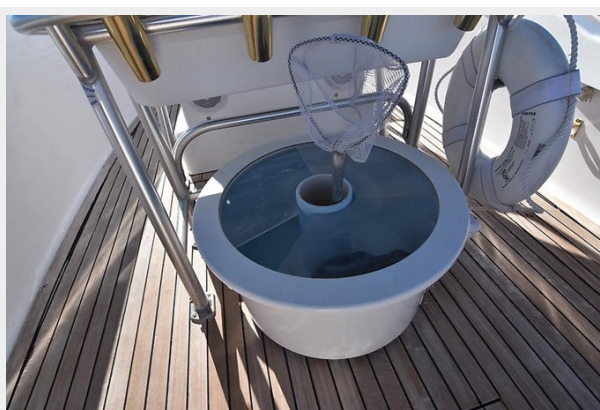


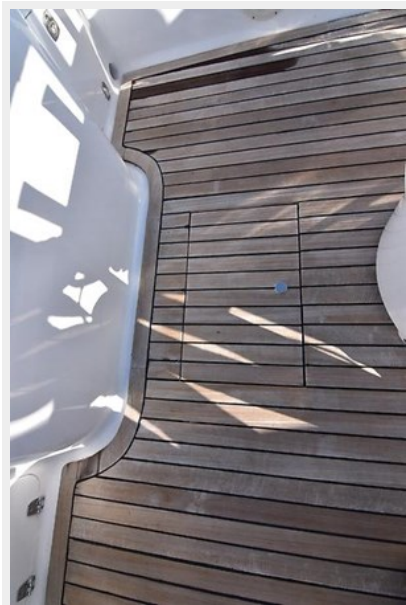


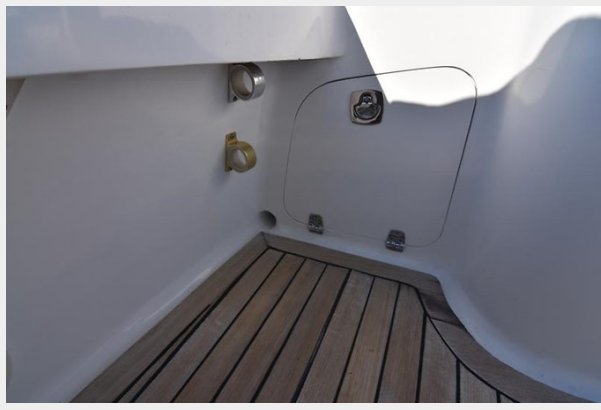














CONTACTS

Andrey Shestakov, leading yacht broker of the sales department of Shestakov Yacht Sales Inc. Shestakov Yacht Sales Inc., the official representative of the Miami/Fort Lauderdale FL headquarters.

Contact details

Email: andrey@shestakovyachtsales.com

Web: shestakovyachtsales.com/en/

Telephones

USA: +1(954)274-4435

Office hours

Monday – Saturday: **9:00 - 21:00** EDT

Sunday: **closed**

Address



Harbour Towne Marina, 850 NE 3rd St,
STE 213, Dania, FL 33004