

TALISMAN C — PROTEKSAN-TURQUOISE



Builder: PROTEKSAN-TURQUOISE

Year Built: 2011

Model: Displacement

Price: €55,000,000 EUR

Location: United States

LOA: 231' 8" (70.6mm)

Beam: 39.69

Max Draft: 13' 2" (4mm)

Cruise Speed: 15 Knots Kts. (17 MPH)

Max Speed: 18 Knots Kts. (21 MPH)

Our experienced yacht broker, Andrey Shestakov, will help you choose and buy a yacht that best suits your needs **TALISMAN C — PROTEKSAN-TURQUOISE** from our catalogue. Presently, at Shestakov Yacht Sales Inc., we have a wide variety of yachts available on our sale's list. We also work in close contact with all the big yacht manufacturers from all over the world.

If you would like to buy a yacht **TALISMAN C — PROTEKSAN-TURQUOISE** or would like help answering any questions concerning purchasing, selling or chartering a yacht, please call **+1(954)274-4435**

TABLE OF CONTENTS

TABLE OF CONTENTS	2
SPECIFICATIONS	4
Overview	4
Basic Information	5
Dimensions	5
Speed, Capacities and Weight	5
Accommodations	5
Hull and Deck Information	6
Engine Information	6
PHOTOS	7
TALISMAN C_Page_04_Image_0001	7
TALISMAN C_Page_05_Image_0001	7
TALISMAN C_Page_06_Image_0001	7
TALISMAN C_Page_07_Image_0001	7
TALISMAN C_Page_08_Image_0001	7
TALISMAN C_Page_09_Image_0001	7
TALISMAN C_Page_10_Image_0001	8
TALISMAN C_Page_11_Image_0001	8
TALISMAN C_Page_12_Image_0001	8
TALISMAN C_Page_13_Image_0001	8
TALISMAN C_Page_14_Image_0001	8
TALISMAN C_Page_15_Image_0001	8
TALISMAN C_Page_16_Image_0001	9
TALISMAN C_Page_17_Image_0001	9
TALISMAN C_Page_18_Image_0001	9
TALISMAN C_Page_19_Image_0001	9
TALISMAN C_Page_20_Image_0001	9
TALISMAN C_Page_21_Image_0001	9

TALISMAN C_Page_22_Image_0001	10
TALISMAN C_Page_22_Image_0002	10
TALISMAN C_Page_23_Image_0001	10
TALISMAN C_Page_24_Image_0001	10
TALISMAN C_Page_25_Image_0001	10
TALISMAN C_Page_26_Image_0001	10
TALISMAN C_Page_27_Image_0001	11
TALISMAN C_Page_28_Image_0001	11
TALISMAN C_Page_29_Image_0001	11
TALISMAN C_Page_30_Image_0001	11
TALISMAN C_Page_31_Image_0001	11
TALISMAN C_Page_32_Image_0001	11
TALISMAN C_Page_33_Image_0001	12
TALISMAN C_Page_34_Image_0001	12
TALISMAN C_Page_35_Image_0001	12
TALISMAN C_Page_36_Image_0001	12
TALISMAN C_Page_37_Image_0001	12
TALISMAN C_Page_38_Image_0001	12
CONTACTS	13
Contact details	13
Telephones	13
Office hours	13
Address	13

SPECIFICATIONS

Overview

The 70.5m (231.2ft) TALISMAN C has a steel hull and aluminium superstructure constructed to Lloyd's classification and MCA compliance by Turkish shipyard Proteksan Turquoise and delivered in 2011. She is designed inside and out by London-based studio H2 Yacht Design and engineered by Italian naval architect Hydro Tec.

Exterior deck spaces include sun beds on the crow's nest observation lounge above the hardtop with glass bulwarks to block the breeze while preserving the views. Wonderful sightlines are a feature throughout this yacht.

Her sun deck has a large glass-backed jacuzzi forward flanked by sunpads, a sit-up bar, day bed and dining beneath the hardtop and plenty of sunpads. There is more open-air dining, also served by a sit-up bar, on the spacious upper deck aft with two L-shaped sun lounges beyond the overhang. Walkaround sidedecks enable guests to immerse themselves in their surroundings.

The main deck aft has sun lounge seating and steps up to a sunpad overlooking the swim platform. A central stairway leads down to the beach club with dayhead and a large swim platform created when the transom folds down.

From the main deck aft, curved sliding glass doors lead into a fully equipped bar area with club seating, a saloon with sofa and armchair seating around a coffee table and a formal dining area with a feature glass-thread chandelier.

There is a dayhead off the main lobby and a gym and wellness area with massage table and beauty salon to starboard off a corridor leading to the VIP and owner's suites. Spiral stairs wind around an intricate glass sculpture brought to life by natural light from a sun deck skylight.

The sky lounge has a seating area and gaming table, and sliding glass doors open onto the aft deck entertainment area. Forward of the upper deck lobby there is a media room with a 42in TV and Playstation.

TALISMAN C welcomes 12 guests in six cabins. The owner's suite is forward-facing on the main deck and has a boudoir décor with voile curtains around the king-sized bed, and crystal chandeliers as bedside reading lights. An en suite shows off glossy two-tone wood veneers and gold mosaic tiles around a spa bath and shower room. There's a huge walk-in wardrobe and an owner's private library (which can be converted to an additional cabin). The VIP suite is aft of the owner's suite. On the lower deck the rest of the guest cabins are no less stylish, with two twin cabins and two double cabins also have spa bath en suites.

Twin 2,447hp Caterpillar diesel engines give her a top speed is 18 knots, a cruising speed of 15 knots and a transatlantic range of 7,000nm at her passage speed of 12 knots. A full-beam tender and toy garage aft on the lower deck launches 7.7m (25.3ft) Ski Nautique and 7m (23ft)

Novurania tenders through shell doors either side.

Basic Information

Category: Displacement

Sub Category: Displacement

Model Year: 2011

Year Built: 2011

Country: United States

Dimensions

LOA: 231' 8" (70.6mm)

LWL: 208' 5" (63.5mm)

Beam: 39.69

Max Draft: 13' 2" (4mm)

Speed, Capacities and Weight

Cruise Speed: 15 Knots Kts. (17 MPH)

Cruise Speed Range: 7000

Max Speed: 18 Knots Kts. (21 MPH)

Gross Tonnage: 1560 Pounds

Water Capacity: 36200 Gallons

Fuel Capacity: 53838.26 Gal Gallons

Accommodations

Total Cabins: 6

Total Berths: 12

Sleeps: 12

Crew Cabin: 20

Crew Berths: 20

Hull and Deck Information

Hull Material: Steel

Deck Material: Teak

Hull Configuration: Displacement w/
Bulbous Bow

Exterior Designer: H2 Yacht Design

Interior Designer: H2 Yacht Design

Engine Information

Engines: 2

Manufacturer: Caterpillar

Fuel Type: Diesel

PHOTOS

TALISMAN C_Page_04_Image_0001



TALISMAN C_Page_05_Image_0001



TALISMAN C_Page_06_Image_0001



TALISMAN C_Page_07_Image_0001



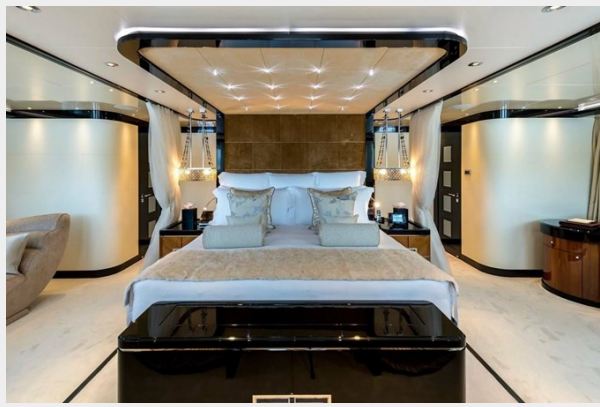
TALISMAN C_Page_08_Image_0001



TALISMAN C_Page_09_Image_0001



TALISMAN C_Page_10_Image_0001



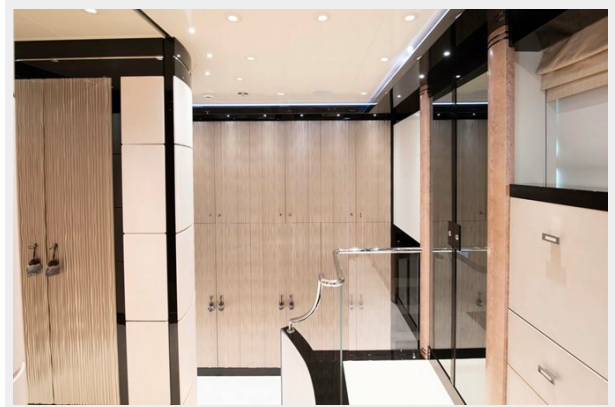
TALISMAN C_Page_11_Image_0001



TALISMAN C_Page_12_Image_0001



TALISMAN C_Page_13_Image_0001



TALISMAN C_Page_14_Image_0001



TALISMAN C_Page_15_Image_0001



TALISMAN C_Page_16_Image_0001



TALISMAN C_Page_17_Image_0001



TALISMAN C_Page_18_Image_0001



TALISMAN C_Page_19_Image_0001



TALISMAN C_Page_20_Image_0001



TALISMAN C_Page_21_Image_0001



TALISMAN C_Page_22_Image_0001



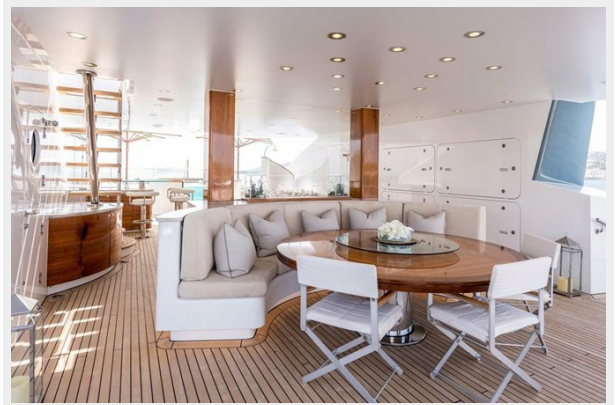
TALISMAN C_Page_22_Image_0002



TALISMAN C_Page_23_Image_0001



TALISMAN C_Page_24_Image_0001



TALISMAN C_Page_25_Image_0001



TALISMAN C_Page_26_Image_0001



TALISMAN C_Page_27_Image_0001



TALISMAN C_Page_28_Image_0001



TALISMAN C_Page_29_Image_0001



TALISMAN C_Page_30_Image_0001



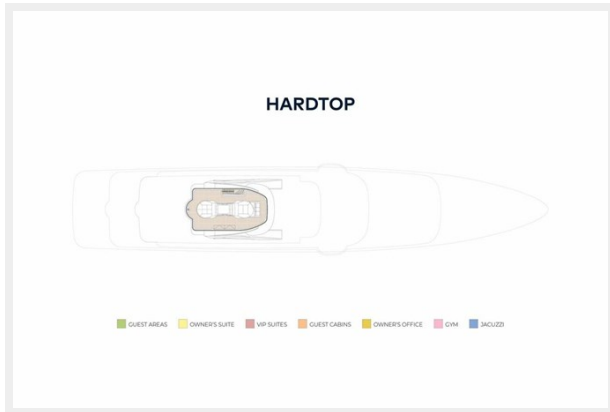
TALISMAN C_Page_31_Image_0001



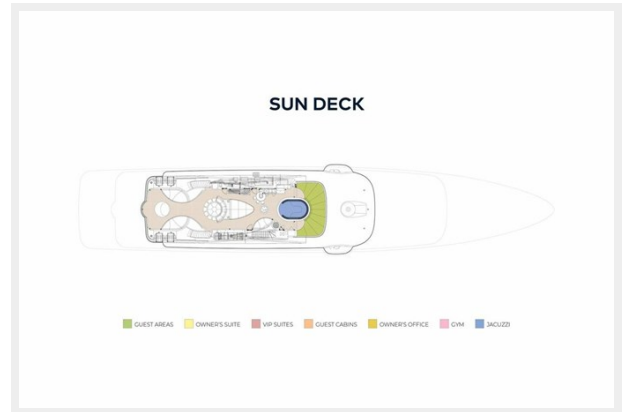
TALISMAN C_Page_32_Image_0001



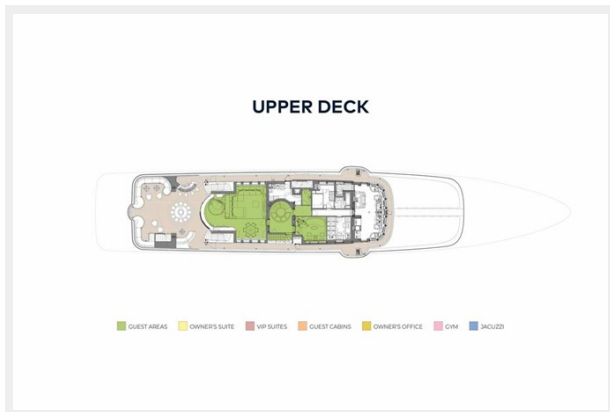
TALISMAN C_Page_33_Image_0001



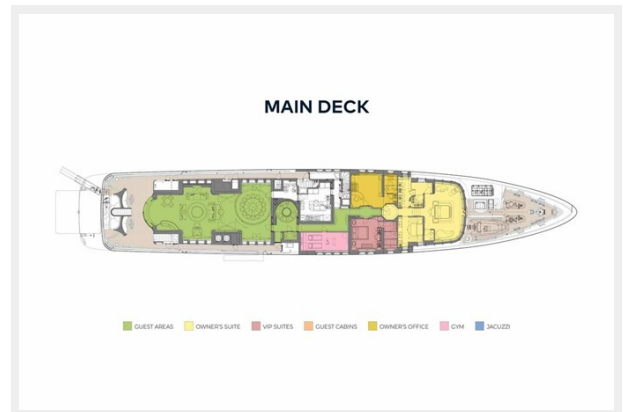
TALISMAN C_Page_34_Image_0001



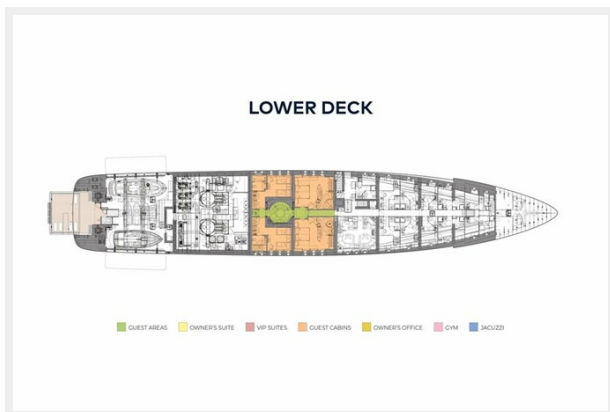
TALISMAN C_Page_35_Image_0001



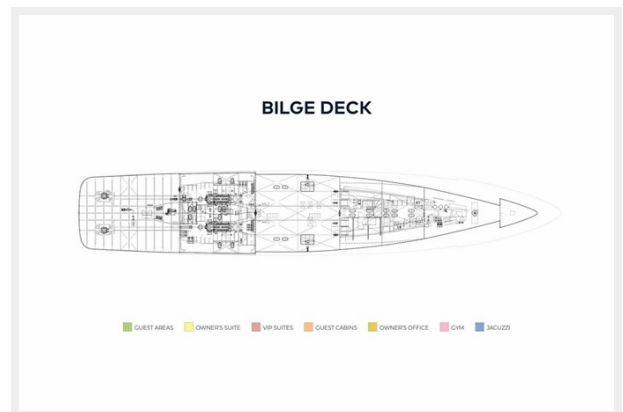
TALISMAN C_Page_36_Image_0001



TALISMAN C_Page_37_Image_0001



TALISMAN C_Page_38_Image_0001



CONTACTS

Andrey Shestakov, leading yacht broker of the sales department of Shestakov Yacht Sales Inc. Shestakov Yacht Sales Inc., the official representative of the Miami/Fort Lauderdale FL headquarters.

Contact details

Email: andrey@shestakovyachtsales.com

Web: shestakovyachtsales.com/en/

Telephones

USA: +1(954)274-4435

Office hours

Monday – Saturday: **9:00 - 21:00** EDT

Sunday: **closed**

Address



Harbour Towne Marina, 850 NE 3rd St,
STE 213, Dania, FL 33004