

TALISMAN C — PROTEKSAN-TURQUOISE



Судостроитель:

PROTEKSAN-TURQUOISE

Год постройки: 2011

Модель: Водоизмещение

Цена: €55,000,000 EUR

Местонахождение: United States

Длина общая: 231' 8" (70.6mm)

Ширина: 39.69

Макс. осадка: 13' 2" (4mm)

Крейс. скорость: 15 Knots Kts. (17 MPH)

Макс. скорость: 18 Knots Kts. (21 MPH)

Купить **TALISMAN C — PROTEKSAN-TURQUOISE** а также выбрать подходящую вам яхту из нашего каталога яхт вам поможет опытный яхтенный брокер Андрей Шестаков. На сегодняшний день компания **Shestakov Yacht Sales Inc.** имеет большое количество яхт в собственном списке продаж, а также тесно сотрудничает со всеми крупными яхтенными производителями по всему миру. Для того чтобы купить яхту **TALISMAN C — PROTEKSAN-TURQUOISE** а также проконсультироваться по любому вопросу связанному с покупкой, продажей, чартером яхт позвоните по телефону **+7(918)465-66-44**.

ОГЛАВЛЕНИЕ

ОГЛАВЛЕНИЕ	2
ХАРАКТЕРИСТИКИ	4
Обзор	4
Основная информация	5
Размеры	5
Скорость, вместимость и масса	5
Размещение	5
Корпус и палуба	6
Информация о двигателе	6
ФОТОГРАФИИ	7
TALISMAN C_Page_04_Image_0001	7
TALISMAN C_Page_05_Image_0001	7
TALISMAN C_Page_06_Image_0001	7
TALISMAN C_Page_07_Image_0001	7
TALISMAN C_Page_08_Image_0001	7
TALISMAN C_Page_09_Image_0001	7
TALISMAN C_Page_10_Image_0001	8
TALISMAN C_Page_11_Image_0001	8
TALISMAN C_Page_12_Image_0001	8
TALISMAN C_Page_13_Image_0001	8
TALISMAN C_Page_14_Image_0001	8
TALISMAN C_Page_15_Image_0001	8
TALISMAN C_Page_16_Image_0001	9
TALISMAN C_Page_17_Image_0001	9
TALISMAN C_Page_18_Image_0001	9
TALISMAN C_Page_19_Image_0001	9
TALISMAN C_Page_20_Image_0001	9
TALISMAN C_Page_21_Image_0001	9

TALISMAN C_Page_22_Image_0001	10
TALISMAN C_Page_22_Image_0002	10
TALISMAN C_Page_23_Image_0001	10
TALISMAN C_Page_24_Image_0001	10
TALISMAN C_Page_25_Image_0001	10
TALISMAN C_Page_26_Image_0001	10
TALISMAN C_Page_27_Image_0001	11
TALISMAN C_Page_28_Image_0001	11
TALISMAN C_Page_29_Image_0001	11
TALISMAN C_Page_30_Image_0001	11
TALISMAN C_Page_31_Image_0001	11
TALISMAN C_Page_32_Image_0001	11
TALISMAN C_Page_33_Image_0001	12
TALISMAN C_Page_34_Image_0001	12
TALISMAN C_Page_35_Image_0001	12
TALISMAN C_Page_36_Image_0001	12
TALISMAN C_Page_37_Image_0001	12
TALISMAN C_Page_38_Image_0001	12
КОНТАКТЫ	13
Контактная информация	13
Телефоны	13
Время работы	13
Адрес	13

ХАРАКТЕРИСТИКИ

Обзор

The 70.5m (231.2ft) TALISMAN C has a steel hull and aluminium superstructure constructed to Lloyd's classification and MCA compliance by Turkish shipyard Proteksan Turquoise and delivered in 2011. She is designed inside and out by London-based studio H2 Yacht Design and engineered by Italian naval architect Hydro Tec.

Exterior deck spaces include sun beds on the crow's nest observation lounge above the hardtop with glass bulwarks to block the breeze while preserving the views. Wonderful sightlines are a feature throughout this yacht.

Her sun deck has a large glass-backed jacuzzi forward flanked by sunpads, a sit-up bar, day bed and dining beneath the hardtop and plenty of sunpads. There is more open-air dining, also served by a sit-up bar, on the spacious upper deck aft with two L-shaped sun lounges beyond the overhang. Walkaround sidedecks enable guests to immerse themselves in their surroundings.

The main deck aft has sun lounge seating and steps up to a sunpad overlooking the swim platform. A central stairway leads down to the beach club with dayhead and a large swim platform created when the transom folds down.

From the main deck aft, curved sliding glass doors lead into a fully equipped bar area with club seating, a saloon with sofa and armchair seating around a coffee table and a formal dining area with a feature glass-thread chandelier.

There is a dayhead off the main lobby and a gym and wellness area with massage table and beauty salon to starboard off a corridor leading to the VIP and owner's suites. Spiral stairs wind around an intricate glass sculpture brought to life by natural light from a sun deck skylight.

The sky lounge has a seating area and gaming table, and sliding glass doors open onto the aft deck entertainment area. Forward of the upper deck lobby there is a media room with a 42in TV and Playstation.

TALISMAN C welcomes 12 guests in six cabins. The owner's suite is forward-facing on the main deck and has a boudoir décor with voile curtains around the king-sized bed, and crystal chandeliers as bedside reading lights. An en suite shows off glossy two-tone wood veneers and gold mosaic tiles around a spa bath and shower room. There's a huge walk-in wardrobe and an owner's private library (which can be converted to an additional cabin). The VIP suite is aft of the owner's suite. On the lower deck the rest of the guest cabins are no less stylish, with two twin cabins and two double cabins also have spa bath en suites.

Twin 2,447hp Caterpillar diesel engines give her a top speed is 18 knots, a cruising speed of 15 knots and a transatlantic range of 7,000nm at her passage speed of 12 knots. A full-beam tender and toy garage aft on the lower deck launches 7.7m (25.3ft) Ski Nautique and 7m (23ft)

Novurania tenders through shell doors either side.

Основная информация

Тип судна: Водоизмещение

Подкатегория: Водоизмещение

Модельный год: 2011

Год постройки: 2011

Страна: United States

Размеры

Длина общая: 231' 8" (70.6mm)

Длина по ватерлинии: 208' 5" (63.5mm)

Ширина: 39.69

Макс. осадка: 13' 2" (4mm)

Скорость, вместимость и масса

Крейс. скорость: 15 Knots Kts. (17 MPH)

Дальность на крейсерской скорости:
7000

Макс. скорость: 18 Knots Kts. (21 MPH)

Чистый вес: 1560 Pounds

Вместимость воды: 36200 Gallons

Объем топливного бака: 53838.26 Gal
Gallons

Размещение

Всего кают: 6

Всего коек: 12

Спальные места: 12

Каюты экипажа: 20

Койки экипажа: 20

Корпус и палуба

Материал корпуса: Steel

Материал палубы: Teak

Комплектация корпуса: Displacement w/
Bulbous Bow

Дизайнер экстерьера: H2 Yacht Design

Дизайнер интерьера: H2 Yacht Design

Информация о двигателе

Двигатели: 2

Производитель: Caterpillar

Тип топлива: Diesel

ФОТОГРАФИИ

TALISMAN C_Page_04_Image_0001



TALISMAN C_Page_05_Image_0001



TALISMAN C_Page_06_Image_0001



TALISMAN C_Page_07_Image_0001



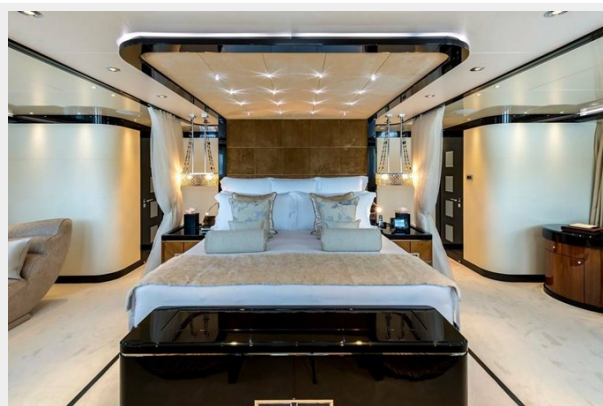
TALISMAN C_Page_08_Image_0001



TALISMAN C_Page_09_Image_0001



TALISMAN C_Page_10_Image_0001



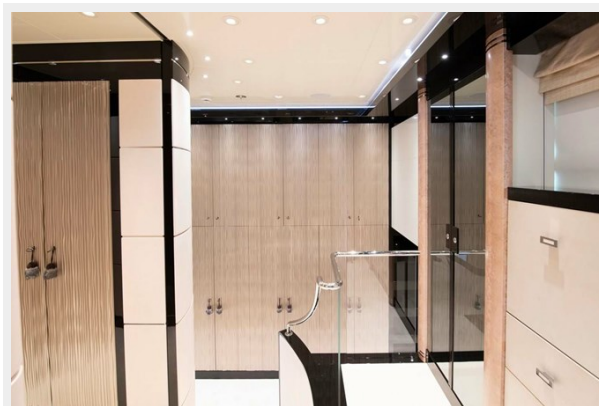
TALISMAN C_Page_11_Image_0001



TALISMAN C_Page_12_Image_0001



TALISMAN C_Page_13_Image_0001



TALISMAN C_Page_14_Image_0001



TALISMAN C_Page_15_Image_0001



TALISMAN C_Page_16_Image_0001



TALISMAN C_Page_17_Image_0001



TALISMAN C_Page_18_Image_0001



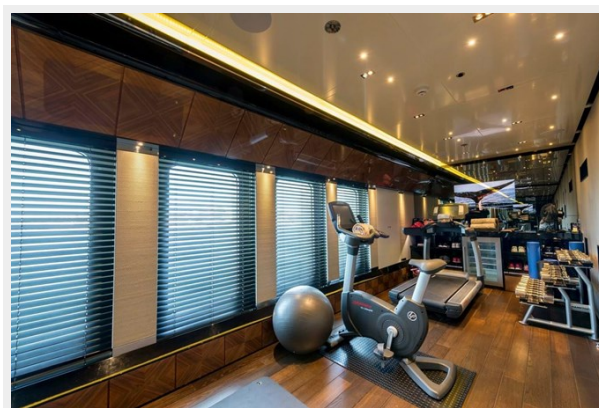
TALISMAN C_Page_19_Image_0001



TALISMAN C_Page_20_Image_0001



TALISMAN C_Page_21_Image_0001



TALISMAN C_Page_22_Image_0001



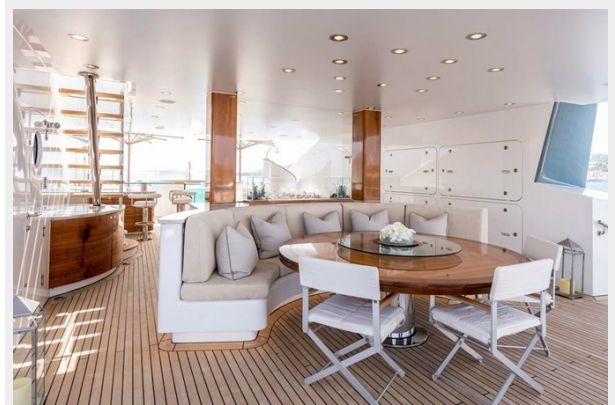
TALISMAN C_Page_22_Image_0002



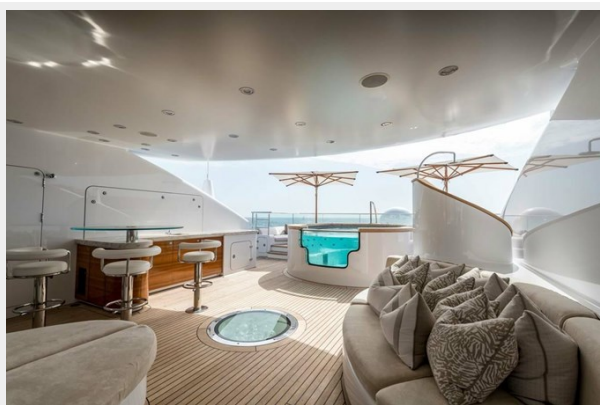
TALISMAN C_Page_23_Image_0001



TALISMAN C_Page_24_Image_0001



TALISMAN C_Page_25_Image_0001



TALISMAN C_Page_26_Image_0001



TALISMAN C_Page_27_Image_0001



TALISMAN C_Page_28_Image_0001



TALISMAN C_Page_29_Image_0001



TALISMAN C_Page_30_Image_0001



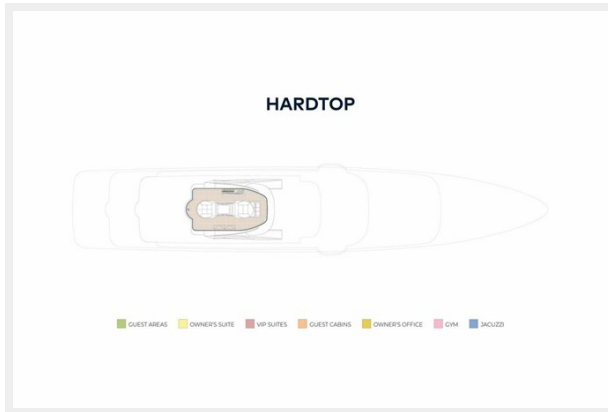
TALISMAN C_Page_31_Image_0001



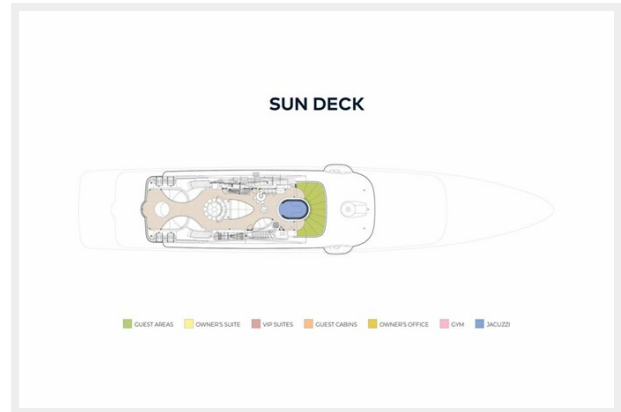
TALISMAN C_Page_32_Image_0001



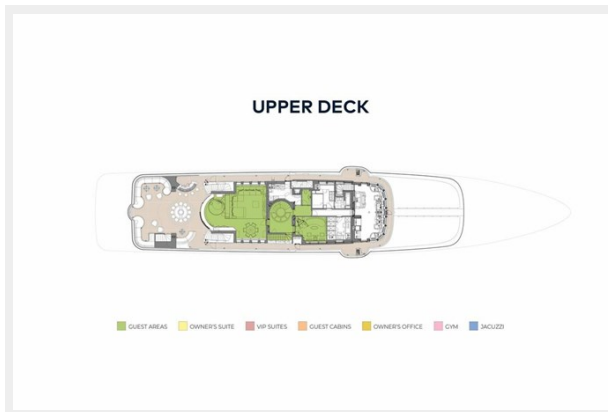
TALISMAN C_Page_33_Image_0001



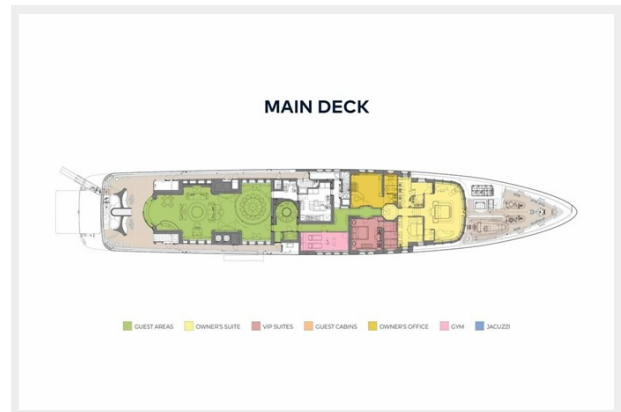
TALISMAN C_Page_34_Image_0001



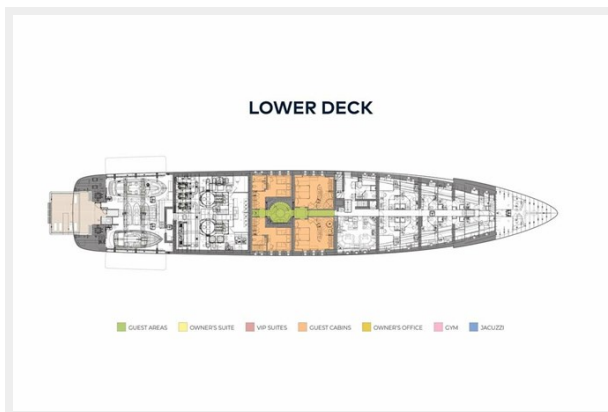
TALISMAN C_Page_35_Image_0001



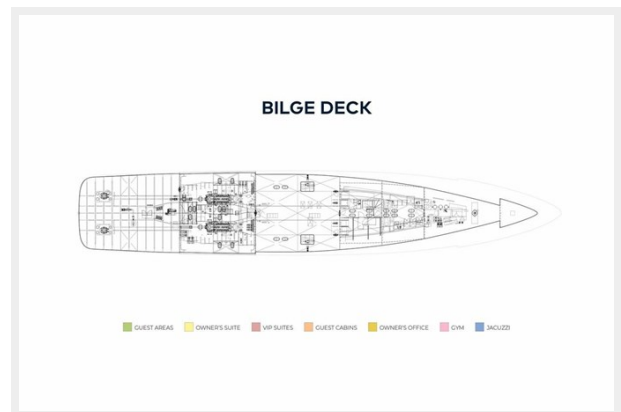
TALISMAN C_Page_36_Image_0001



TALISMAN C_Page_37_Image_0001



TALISMAN C_Page_38_Image_0001



КОНТАКТЫ

Андрей Шестаков (Andrey Shestakov) – ведущий яхтенный брокер отдела продаж яхт и судов компании Shestakov Yacht Sales Inc. Официальный представитель Shestakov Yacht Sales Inc. для русскоговорящих клиентов в центральном офисе компании в Майами/Форт Лодердейл/Флорида/США.

Контактная информация

Email: andrey@shestakovyachtsales.com

Web: shestakovyachtsales.com

Телефоны

Краснодарский край: **+7(918)465-66-44**

США, Майами, Флорида: **+1(954)274-4435**

Время работы

Понедельник – Суббота: **9:00 - 21:00**
EDT

Воскресенье: **Закрето**

Адрес



Harbour Towne Marina, 850 NE 3rd St,
STE 213, Dania, FL 33004