

SECESSION — ATLANTIC



Builder: ATLANTIC

Year Built: 1981

Model: trawler

Price: PRICE ON APPLICATION

Location: United States

LOA: 46' 9" (14.25mm)

Beam: 15.41

Max Draft: 3' 8" (1.12mm)

Our experienced yacht broker, Andrey Shestakov, will help you choose and buy a yacht that best suits your needs **Secession — ATLANTIC** from our catalogue. Presently, at Shestakov Yacht Sales Inc., we have a wide variety of yachts available on our sale's list. We also work in close contact with all the big yacht manufacturers from all over the world.

If you would like to buy a yacht **Secession — ATLANTIC** or would like help answering any questions concerning purchasing, selling or chartering a yacht, please call **+1(954)274-4435**

TABLE OF CONTENTS

TABLE OF CONTENTS	2
SPECIFICATIONS	4
Overview	4
Basic Information	4
Dimensions	4
Accommodations	4
Hull and Deck Information	4
Engine Information	5
PHOTOS	6
2	6
3	6
4	6
5	6
6	6
7	6
8	7
9	7
10	7
11	7
12	7
13	7
14	8
15	8
16	8
17	8
18	8
19	8
20	9

21	9
22	9
23	9
24	9
25	9
26	10
27	10
28	10
29	10
30	10
31	10
32	11
33	11
34	11
35	11
36	11
37	11
38	12
39	12
CONTACTS	13
Contact details	13
Telephones	13
Office hours	13
Address	13

SPECIFICATIONS

Overview

If you are in the market for a great "live-aboard" diesel powered trawler with tons of interior and exterior living space then you must have this one on your must see list. This model has the biggest Master Stateroom of any boat in this class plus has a second bunkhouse stateroom complete with its own head. Galley is down across from a roomy booth style dinette. The boat just made the passage from Key West to SC last summer and due to health reasons she is now on the market. A recent survey is available to interested parties but only after they do a visual inspection first. She is equipped with a new Garmin GPS, Bow Thruster, Washer and Dryer and an updated Generator. Come take a look and bring your checkbook.

Basic Information

Category: trawler

Sub Category: Aft Cabin

Model Year: 1981

Year Built: 1981

Country: United States

Dimensions

LOA: 46' 9" (14.25mm)

Beam: 15.41

Max Draft: 3' 8" (1.12mm)

Accommodations

Total Cabins: 2

Total Heads: 2

Hull and Deck Information

Hull Material: Fiberglass

Engine Information

Engines: 2

Manufacturer: Perkins

Engine Type: Inboard

Fuel Type: Diesel

PHOTOS

2



3



4



5



6



7



8



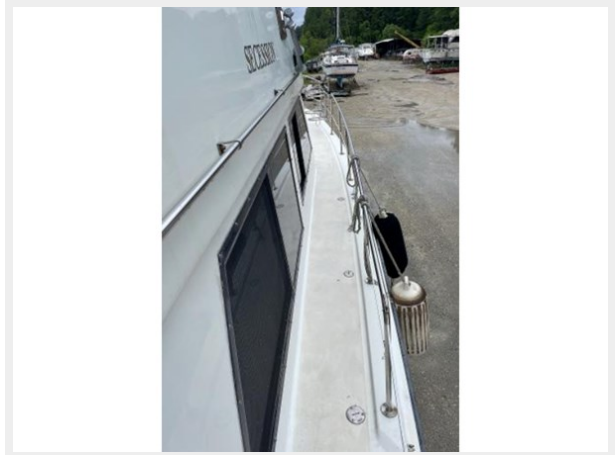
9



10



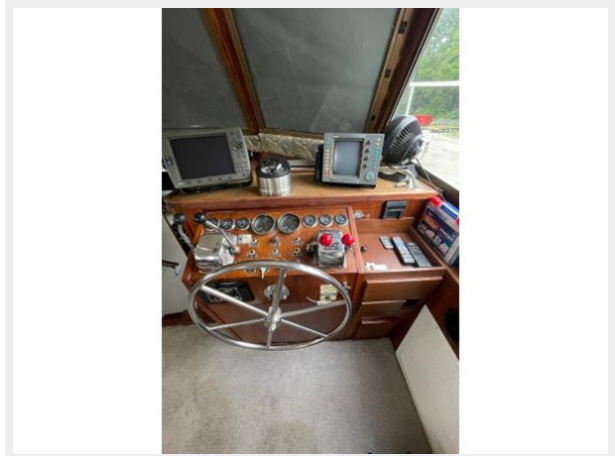
11



12



13



14



15



16



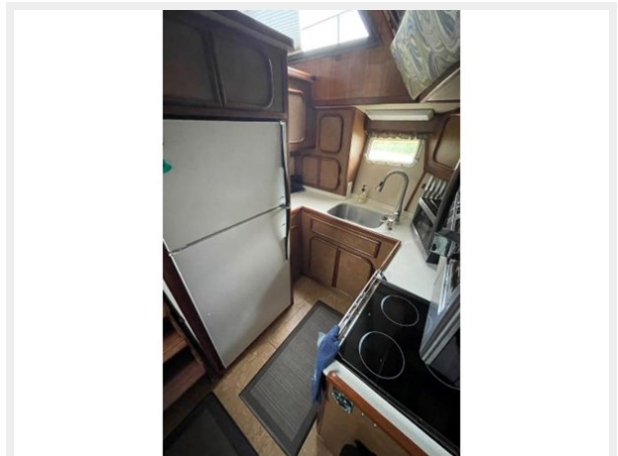
17



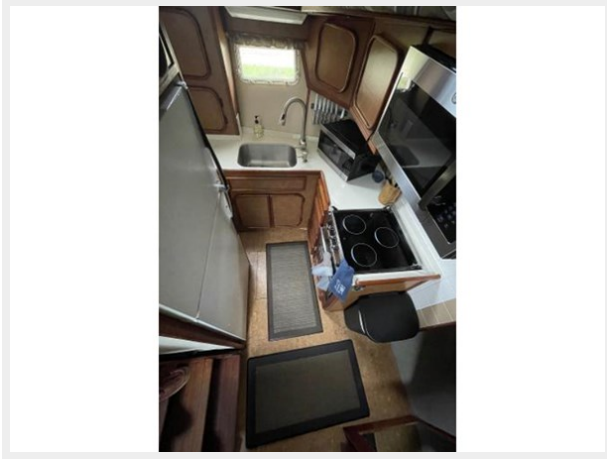
18



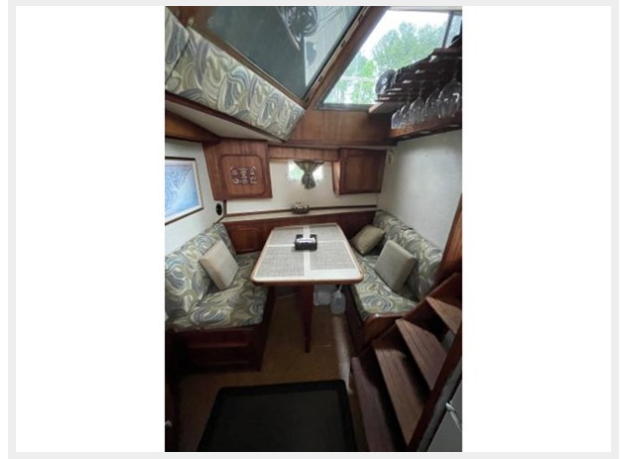
19



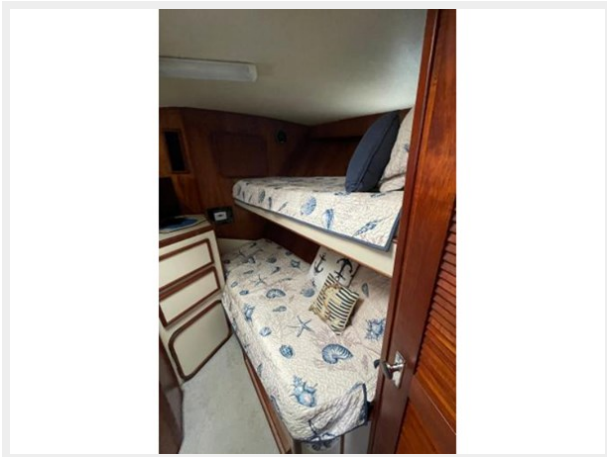
20



21



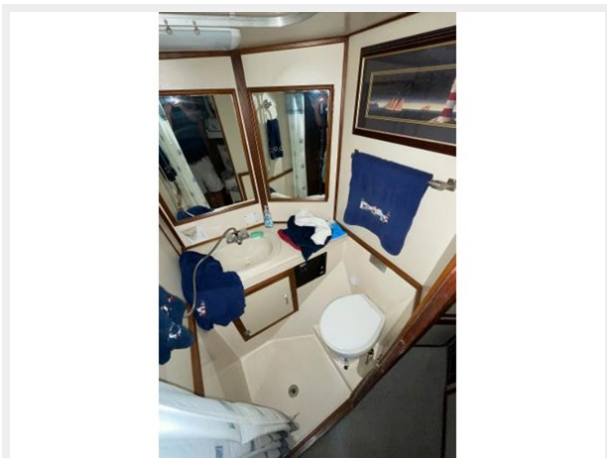
22



23



24



25



26



27



28



29



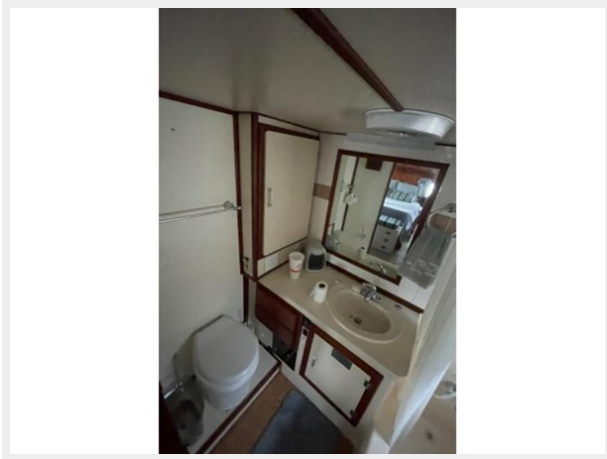
30



31



32



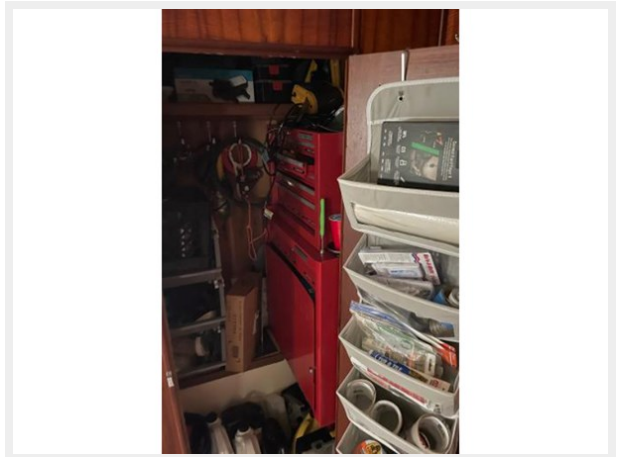
33



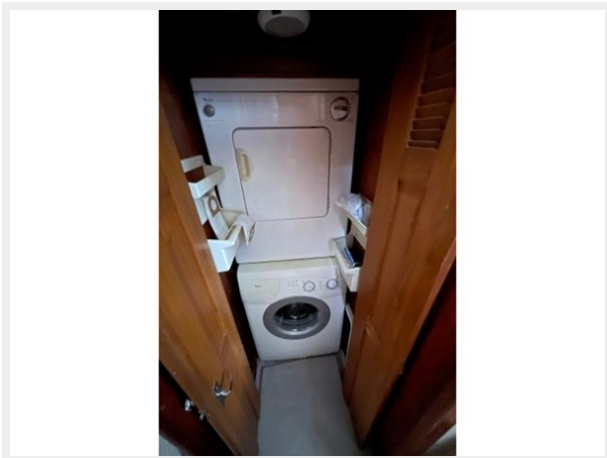
34



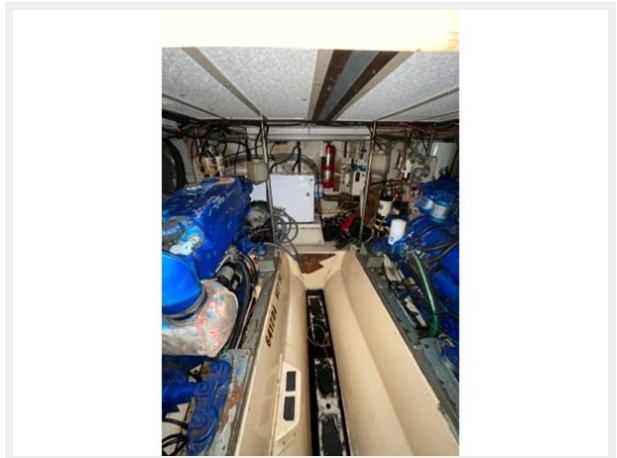
35



36



37



38



39



CONTACTS

Andrey Shestakov, leading yacht broker of the sales department of Shestakov Yacht Sales Inc. Shestakov Yacht Sales Inc., the official representative of the Miami/Fort Lauderdale FL headquarters.

Contact details

Email: andrey@shestakovyachtsales.com

Web: shestakovyachtsales.com/en/

Telephones

USA: +1(954)274-4435

Office hours

Monday – Saturday: **9:00 - 21:00** EDT

Sunday: **closed**

Address



Harbour Towne Marina, 850 NE 3rd St,
STE 213, Dania, FL 33004