

## BIANCINO 2 — VANDUTCH



**Builder:** VANDUTCH

**Year Built:** 2013

**Model:** cruiser

**Price:** €845,000 EUR

**Location:** France

**LOA:** 55' (16.76m)

**Beam:** 14.75

**Min Draft:** 3' 9" (1.14m)

**Max Draft:** 3' 9" (1.14m)

**Cruise Speed:** 20 Knots Kts. (23 MPH)

**Max Speed:** 36 Knots Kts. (41 MPH)

Our experienced yacht broker, Andrey Shestakov, will help you choose and buy a yacht that best suits your needs **BIANCINO 2 — VANDUTCH** from our catalogue. Presently, at Shestakov Yacht Sales Inc., we have a wide variety of yachts available on our sale's list. We also work in close contact with all the big yacht manufacturers from all over the world.

If you would like to buy a yacht **BIANCINO 2 — VANDUTCH** or would like help answering any questions concerning purchasing, selling or chartering a yacht, please call **+1(954)274-4435**

---

# TABLE OF CONTENTS

---

TABLE OF CONTENTS	2
SPECIFICATIONS	3
Overview	3
Basic Information	3
Dimensions	3
Speed, Capacities and Weight	3
Accommodations	4
Hull and Deck Information	4
Engine Information	4
PHOTOS	5
CONTACTS	9
Contact details	9
Telephones	9
Office hours	9
Address	9

---

# SPECIFICATIONS

---

## Overview

---

Introducing M/Y BIANCINO 2, an immaculate VanDutch 55 tastefully refurbished and ready for a new owner. The VanDutch 55 majestically takes up the main lines of the VanDutch 40. Still from the Franck Mulder design firm, the design and naval architecture take up the silhouette and in particular the straight bow that marked the success of the VanDutch 40. Taking advantage of the extension to 55 feet, the deck layout offers much more substantial accommodation than on the VanDutch 40 with a huge sundeck aft, a modular outdoor lounge perfectly protected by the very enveloping windscreen and the appearance of a brand new fully electric bimini. BIANCINO 2 features a generous queen-size V-berth as well as an additional twin cabin and convertible double bed in the saloon, plus a galley station and bathroom with WC and shower. With twin 900HP Volvo inboard engines, she can comfortably reach speeds of up to 37 knots. In turn-key condition, this is a rare opportunity to acquire a luxurious motor boat perfect for longer-range coastal cruising.

## Basic Information

---

**Category:** cruiser

**Model Year:** 2013

**Year Built:** 2013

**Refit Type:** New stern thruster and generator, new bimini, new cushion covers and interior upholstery, hull repainted

**Country:** France

## Dimensions

---

**LOA:** 55' (16.76mm)

**Beam:** 14.75

**Min Draft:** 3' 9" (1.14mm)

**Max Draft:** 3' 9" (1.14mm)

## Speed, Capacities and Weight

---

**Cruise Speed:** 20 Knots Kts. (23 MPH)

**Max Speed:** 36 Knots Kts. (41 MPH)

**Water Capacity:** 600 Gallons

**Fuel Capacity:** 660.43 Gal Gallons

---

## Accommodations

---

**Total Cabins:** 2

**Total Berths:** 4

**Total Heads:** 1

---

## Hull and Deck Information

---

**Hull Material:** Composite

**Hull Configuration:** Deep Vee

**Hull Color:** Anthracite

**Exterior Designer:** Frank Mulder Design

**Interior Designer:** Frank Mulder Design

---

## Engine Information

---

**Engines:** 2

**Manufacturer:** Volvo Penta

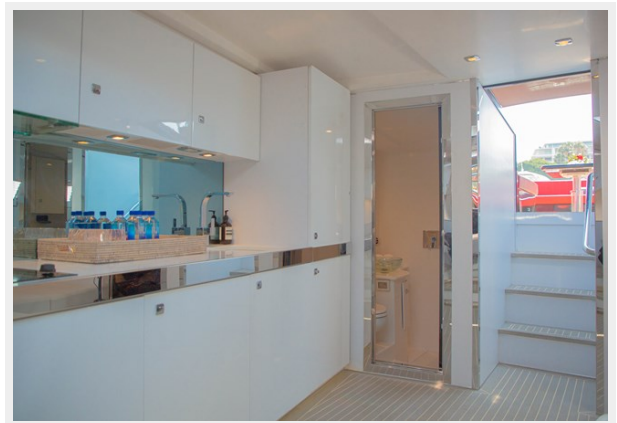
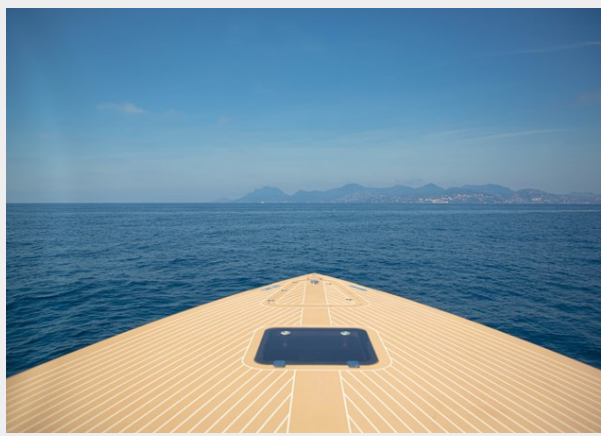
**Engine Type:** Inboard

**Fuel Type:** Diesel

# PHOTOS











---

# CONTACTS

---

Andrey Shestakov, leading yacht broker of the sales department of Shestakov Yacht Sales Inc. Shestakov Yacht Sales Inc., the official representative of the Miami/Fort Lauderdale FL headquarters.

---

## Contact details

---

Email: [andrey@shestakovyachtsales.com](mailto:andrey@shestakovyachtsales.com)

Web: [shestakovyachtsales.com/en/](http://shestakovyachtsales.com/en/)

---

## Telephones

---

USA: +1(954)274-4435

---

## Office hours

---

Monday – Saturday: **9:00 - 21:00** EDT

Sunday: **closed**

---

## Address

---



Harbour Towne Marina, 850 NE 3rd St,  
STE 213, Dania, FL 33004