

OUR TIME — SEA RAY



Builder: SEA RAY

Year Built: 2007

Model: cruiser

Price: PRICE ON APPLICATION

Location: United States

LOA: 40' (12.19mm)

Beam: 13.16

Max Draft: 2' 10" (0.86mm)

Our experienced yacht broker, Andrey Shestakov, will help you choose and buy a yacht that best suits your needs **OUR TIME — SEA RAY** from our catalogue. Presently, at Shestakov Yacht Sales Inc., we have a wide variety of yachts available on our sale's list. We also work in close contact with all the big yacht manufacturers from all over the world.

If you would like to buy a yacht **OUR TIME — SEA RAY** or would like help answering any questions concerning purchasing, selling or chartering a yacht, please call **+1(954)274-4435**

TABLE OF CONTENTS

TABLE OF CONTENTS	2
SPECIFICATIONS	5
Overview	5
Basic Information	5
Dimensions	5
Speed, Capacities and Weight	5
Accommodations	5
Hull and Deck Information	6
Engine Information	6
PHOTOS	7
Stbd profile	7
Bow profile	7
Port bow profile	7
Stbd bow profile	7
Port quarter profile	7
Stern profile	7
Cockpit	8
Stbd quarter profile	8
Galley/Salon	8
Stbd profile	8
Cockpit seating	8
Helm station	8
Helm	9
Helm dashboard	9
Stbd profile	9
Galley/Salon area	9
Salon	9
Galley	9

Mid-berth	10
Mid-berth entertainment center	10
AC/DC panel	10
Fwd stateroom	10
Port of fwd stateroom	10
Stbd of fwd stateroom	10
Head	11
Vanity sink in the head	11
Port profile	11
Engine room	11
Engine 1	11
Engine 2	11
Genset	12
Stbd quarter profile	12
Swim platform	12
Cockpit view in slip	12
Port bow profile	12
Port profile	12
Garmin GPSMap XSV	13
Stbd profile	13
Helm electronics	13
Stbd bow profile	13
Port quarter profile while underway	13
Stbd bow profile while underway	13
Aerial view	14
Stbd quarter profile	14
40 Sundancer underway	14
40 Sundancer underway	14
40 Sundancer underway	14

050	14
CONTACTS	15
Contact details	15
Telephones	15
Office hours	15
Address	15

SPECIFICATIONS

Overview

N/A

Basic Information

Category: cruiser

Sub Category: Express

Model Year: 2007

Year Built: 2007

Country: United States

Dimensions

LOA: 40' (12.19mm)

Beam: 13.16

Max Draft: 2' 10" (0.86mm)

Speed, Capacities and Weight

Water Capacity: 70 Gallons

Holding Tank: 42 Gal Gallons

Fuel Capacity: 275 Gal Gallons

Accommodations

Total Cabins: 2

Total Berths: 3

Total Heads: 1

Hull and Deck Information

Hull Material: Fiberglass

Hull Configuration: Modified V-Hull

Hull Color: Black

Engine Information

Engines: 2

Manufacturer: Cummins

Engine Type: Inboard

Fuel Type: Diesel

PHOTOS

Stbd profile



Bow profile



Stbd bow profile



Port bow profile



Stern profile



Port quarter profile



Stbd quarter profile



Cockpit



Galley/Salon



Stbd profile



Cockpit seating



Helm station



Helm



Helm dashboard



Stbd profile



Galley/Salon area



Salon



Galley



Mid-berth



Mid-berth entertainment center



AC/DC panel



Fwd stateroom



Port of fwd stateroom



Stbd of fwd stateroom



Head



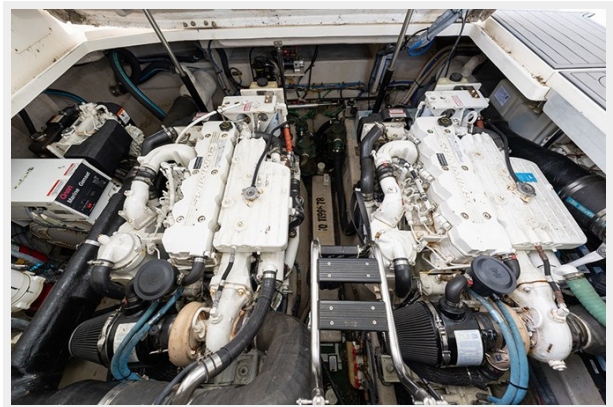
Vanity sink in the head



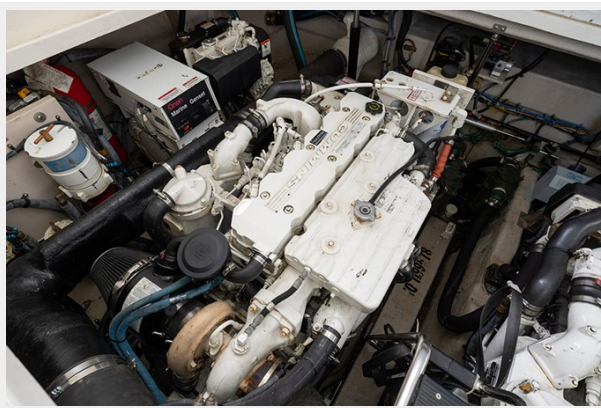
Port profile



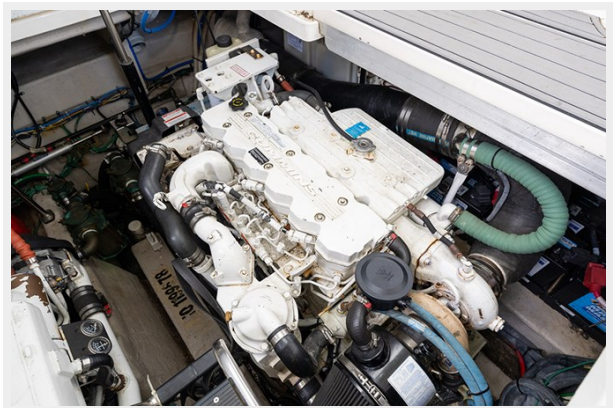
Engine room



Engine 1



Engine 2



Genset



Stbd quarter profile



Swim platform



Cockpit view in slip



Port bow profile



Port profile



Stbd profile



Garmin GPSMap XSV



Helm electronics



Stbd bow profile



Stbd bow profile while underway



Port quarter profile while underway



Stbd quarter profile



Aerial view



40 Sundancer underway



40 Sundancer underway



40 Sundancer underway



050



CONTACTS

Andrey Shestakov, leading yacht broker of the sales department of Shestakov Yacht Sales Inc. Shestakov Yacht Sales Inc., the official representative of the Miami/Fort Lauderdale FL headquarters.

Contact details

Email: andrey@shestakovyachtsales.com

Web: shestakovyachtsales.com/en/

Telephones

USA: +1(954)274-4435

Office hours

Monday – Saturday: **9:00 - 21:00** EDT

Sunday: **closed**

Address



Harbour Towne Marina, 850 NE 3rd St,
STE 213, Dania, FL 33004