

A WONDERFUL LIFE — SEA RAY



Builder: SEA RAY

LOA: 44' (13.41mm)

Year Built: 1989

Model: Motor Yacht

Price: PRICE ON APPLICATION

Location: United States

Our experienced yacht broker, Andrey Shestakov, will help you choose and buy a yacht that best suits your needs **A Wonderful Life — SEA RAY** from our catalogue. Presently, at Shestakov Yacht Sales Inc., we have a wide variety of yachts available on our sale's list. We also work in close contact with all the big yacht manufacturers from all over the world.

If you would like to buy a yacht **A Wonderful Life — SEA RAY** or would like help answering any questions concerning purchasing, selling or chartering a yacht, please call **+1(954)274-4435**

TABLE OF CONTENTS

TABLE OF CONTENTS	2
SPECIFICATIONS	5
Overview	5
Basic Information	5
Dimensions	5
Accommodations	5
Hull and Deck Information	6
Engine Information	6
PHOTOS	7
0_2799592_	7
1_2799592_	7
2_2799592_	7
3_2799592_	7
4_2799592_	7
5_2799592_	7
6_2799592_	7
7_2799592_	7
8_2799592_	8
9_2799592_	8
10_2799592_	8
11_2799592_	8
12_2799592_	8
13_2799592_	8
14_2799592_	8
15_2799592_	8
16_2799592_	9
17_2799592_	9
18_2799592_	9

19_2799592_	9
20_2799592_	9
21_2799592_	9
22_2799592_	9
23_2799592_	9
24_2799592_	10
25_2799592_	10
26_2799592_	10
27_2799592_	10
28_2799592_	10
29_2799592_	10
30_2799592_	11
31_2799592_	11
32_2799592_	11
33_2799592_	11
34_2799592_	11
35_2799592_	11
36_2799592_	11
37_2799592_	11
38_2799592_	12
39_2799592_	12
40_2799592_	12
41_2799592_	12
42_2799592_	12
43_2799592_	12
44_2799592_	12
45_2799592_	12
46_2799592_	13
47_2799592_	13

48_2799592_	13
49_2799592_	13
50_2799592_	13
51_2799592_	13
52_2799592_	13
53_2799592_	13
54_2799592_	14
55_2799592_	14
56_2799592_	14
57_2799592_	14
58_2799592_	14
59_2799592_	14
60_2799592_	14
61_2799592_	14
62_2799592_	15
63_2799592_	15
CONTACTS	16
Contact details	16
Telephones	16
Office hours	16
Address	16

SPECIFICATIONS

Overview

This 1989 Sea Ray 440 Aft Cabin is in good condition with plenty of nice upgrades.

Her 13' 11" beam allows for a spacious floor plan with plenty of amenities.

The Flybridge and aft cockpit has a full enclosure, all new canvas and isinglass in 2023. Cushions on the Flybridge were re-upholstered in 2023. Hardtop over the aft sundeck. A new Garmin Echo map 935V chart plotter was just installed (6/23). Equipped with a Cetrex 730 autopilot

Below deck, salon is open allowing for any seating arrangement you desire. Forward, the full galley is on the port side and the dinette is on the starboard side.

The forward staterooms sleep 2 comfortably with vanity and compost head (plumbing still in place if you desire to change it back to a conventional head.. Aft stateroom features an island queen, plenty of storage and has a dedicated Vacuflush head and huge separate shower stall .

Powering this vessel are twin Caterpillar 3208 diesel engines engines with 1867 and 1888 hours. The Westerbeke 8 kW generator has 749 hours.

This vessel is being sold with a 9 ft. Highfield RIB inflatable dinghy with an 8 hp Mercury engine.

She makes a great cruiser for overnight stay or living aboard!

Basic Information

Category: Motor Yacht

Model Year: 1989

Year Built: 1989

Country: United States

Dimensions

LOA: 44' (13.41mm)

Accommodations

Total Cabins: 2

Total Heads: 2

Hull and Deck Information

Hull Material: Fiberglass

Engine Information

Engines: 2

Manufacturer: Caterpillar

Fuel Type: Diesel

PHOTOS

0_2799592_



1_2799592_



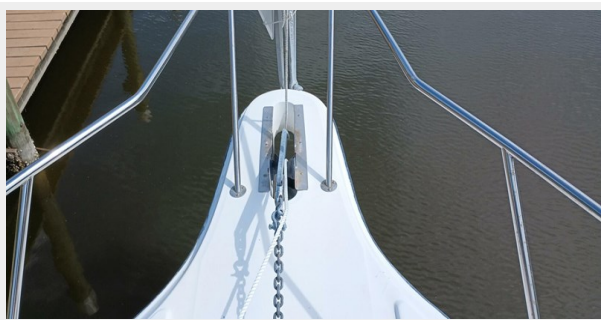
2_2799592_



3_2799592_



4_2799592_



5_2799592_



6_2799592_



7_2799592_



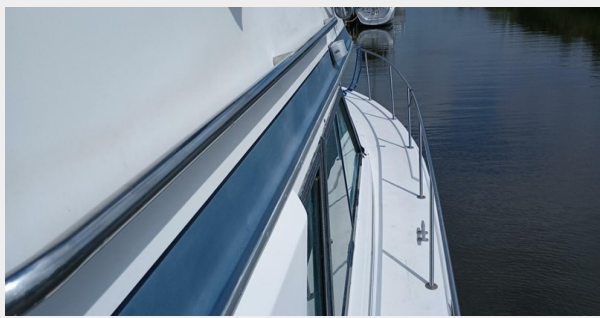
8_2799592_



9_2799592_



10_2799592_



11_2799592_



12_2799592_



13_2799592_



14_2799592_



15_2799592_



16_2799592_



17_2799592_



18_2799592_



19_2799592_



20_2799592_



21_2799592_



22_2799592_



23_2799592_



24_2799592_



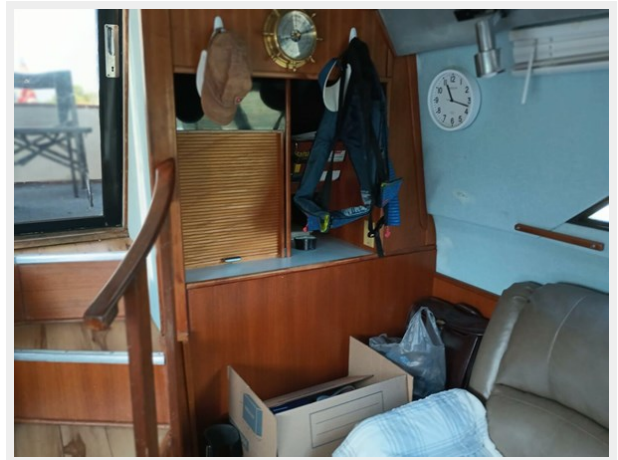
25_2799592_



26_2799592_



27_2799592_



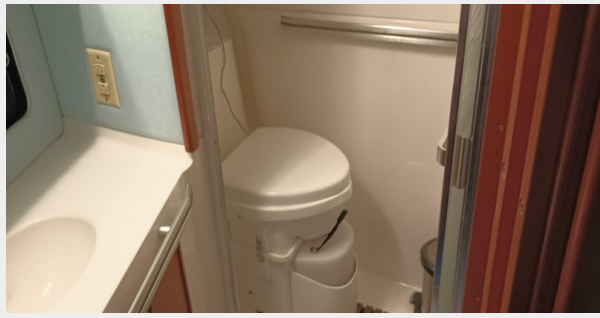
28_2799592_



29_2799592_



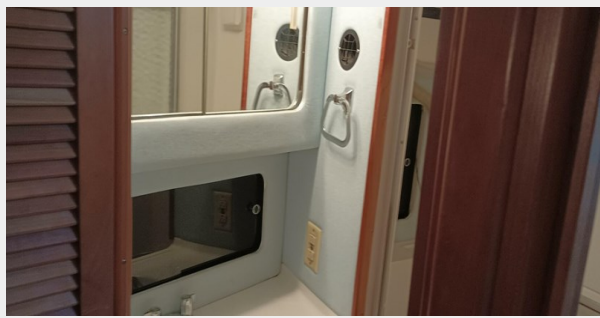
30_2799592_



31_2799592_



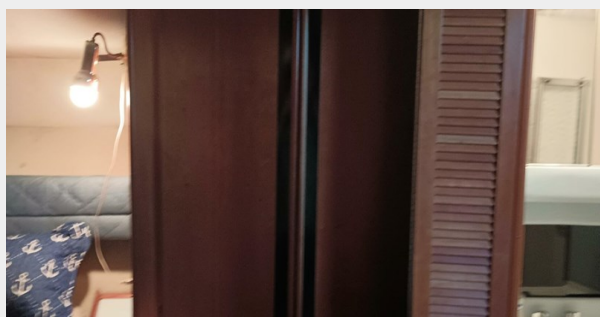
32_2799592_



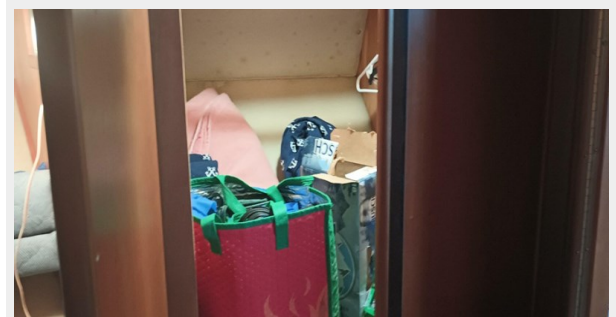
33_2799592_



34_2799592_



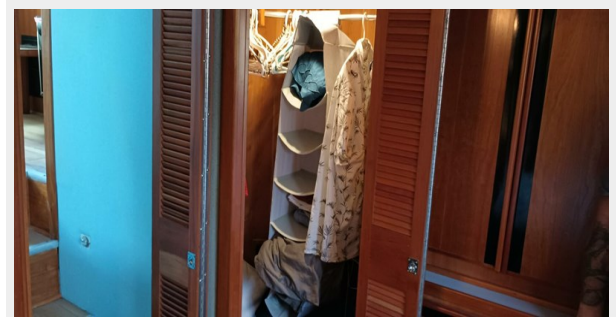
35_2799592_



36_2799592_



37_2799592_



38_2799592_



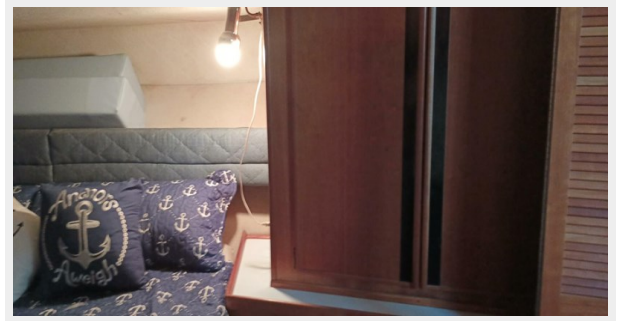
39_2799592_



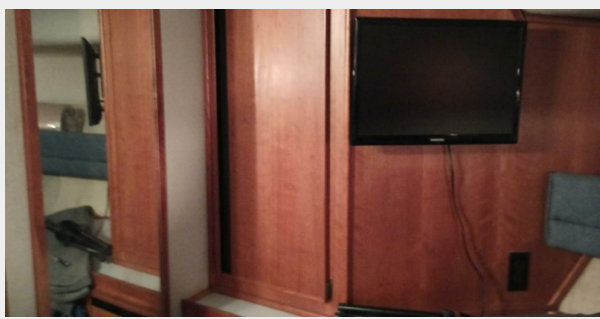
40_2799592_



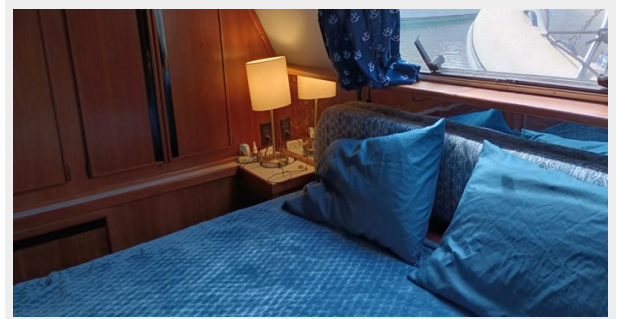
41_2799592_



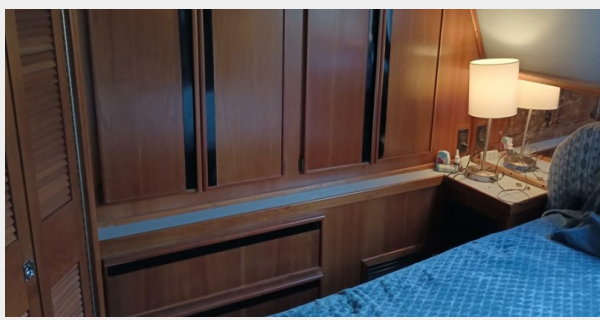
42_2799592_



43_2799592_



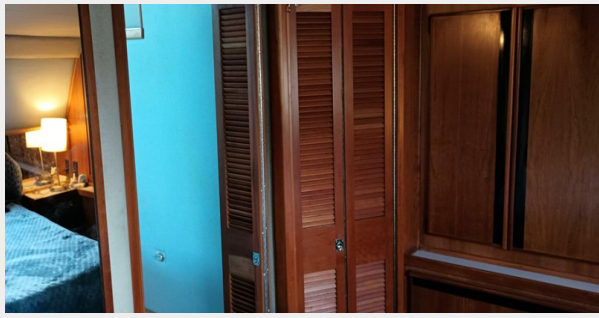
44_2799592_



45_2799592_



46_2799592_



47_2799592_



48_2799592_



49_2799592_



50_2799592_



51_2799592_



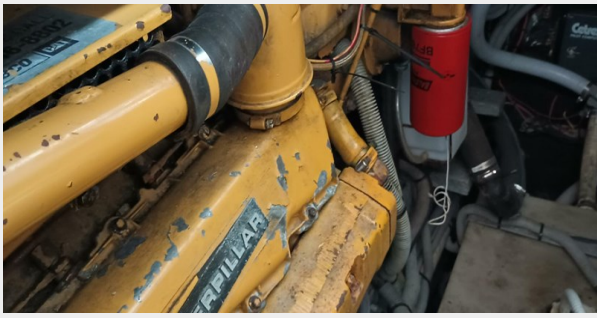
52_2799592_



53_2799592_



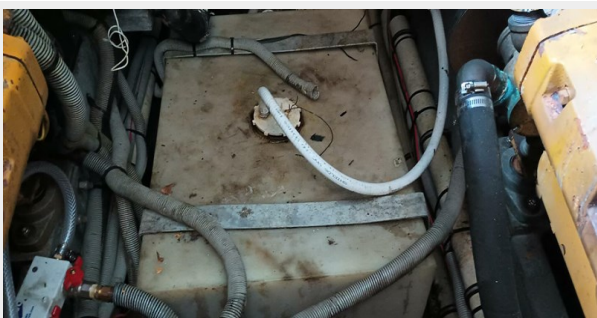
54_2799592_



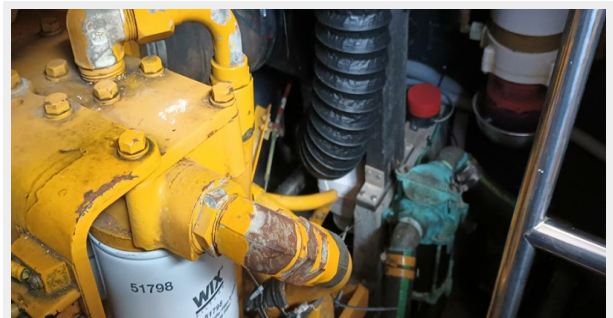
55_2799592_



56_2799592_



57_2799592_



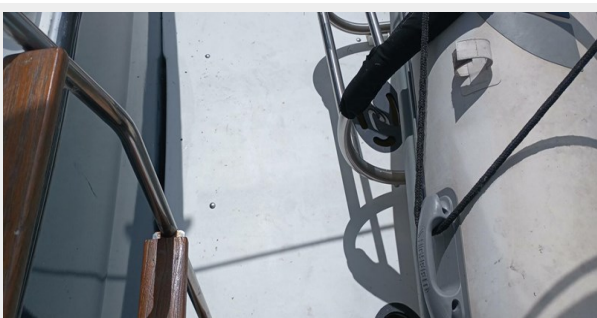
58_2799592_



59_2799592_



60_2799592_



61_2799592_



62_2799592_



63_2799592_



CONTACTS

Andrey Shestakov, leading yacht broker of the sales department of Shestakov Yacht Sales Inc. Shestakov Yacht Sales Inc., the official representative of the Miami/Fort Lauderdale FL headquarters.

Contact details

Email: andrey@shestakovyachtsales.com

Web: shestakovyachtsales.com/en/

Telephones

USA: +1(954)274-4435

Office hours

Monday – Saturday: **9:00 - 21:00** EDT

Sunday: **closed**

Address



Harbour Towne Marina, 850 NE 3rd St,
STE 213, Dania, FL 33004