

KETEL TWO — AUSTIN PARKER



Builder: AUSTIN PARKER

Year Built: 2015

Model: cruiser

Price: PRICE ON APPLICATION

Location: United States

LOA: 54' (16.46mm)

Beam: 16.5

Max Draft: 5' 1" (1.55mm)

Cruise Speed: 30 Knots Kts. (35 MPH)

Our experienced yacht broker, Andrey Shestakov, will help you choose and buy a yacht that best suits your needs **KETEL TWO — AUSTIN PARKER** from our catalogue. Presently, at Shestakov Yacht Sales Inc., we have a wide variety of yachts available on our sale's list. We also work in close contact with all the big yacht manufacturers from all over the world.

If you would like to buy a yacht **KETEL TWO — AUSTIN PARKER** or would like help answering any questions concerning purchasing, selling or chartering a yacht, please call **+1(954)274-4435**

TABLE OF CONTENTS

TABLE OF CONTENTS	2
SPECIFICATIONS	5
Overview	5
Basic Information	5
Dimensions	5
Speed, Capacities and Weight	5
Accommodations	5
Hull and Deck Information	6
Engine Information	6
PHOTOS	7
Beam Shot	7
Port Hull	7
Starboard Bow Running Shot	7
Starboard Beam Running Shot	7
Starboard Quarter Running Shot	7
Starboard Salon Settee Looking Aft	7
Salon U Settee Looking Aft	8
Salon U-Settee Looking Forward	8
Salon Evening	8
Pilothouse Looking Forward	8
Helm	8
Helm Dash	8
Carbon Fibre Wheel	9
Helm Double Settee	9
Port Salon Cabinetry	9
Master Berth	9
Master Head	10
Master Cabin Looking Aft	10

Guest Head Evening	10
Starboard Guest Cabin Looking Aft	10
Head Tile Detail	11
Port Cabin Looking Aft	11
Illuminated Stairway	11
Looking Down at Galley	11
Galley Looking Aft	12
Salon Dedicated Dish and Glass Storage	12
Stand-up Refrigerator	12
Galley Sink	12
Interior Sole and Lighting Detail	13
Foredeck w Sunpad	13
Anchor Windlass and Cleats	13
Foredeck Sunbathing Pad	13
Flybridge Settee	13
Flybridge Helm Dash	13
Flybridge Engine Controls	14
Helm Switches	14
Wireless Yacht Controller	14
Helm Switches Detail	14
Cockpit Looking Forward to Port	14
Cockpit Looking Forward to Starboard	14
Flybridge Steps	15
Cockpit Aft	15
Cockpit L Settee	15
Cockpit Looking Aft from Salon	15
Port Quarter at Dock	15
Tender Garage Door Open	15
Swim Platform 'Up'	16

Swim Platform 'Down'	16
Starboard Engine	16
Onan Generator	16
Racor Fuel Filters	16
Prop	16
CONTACTS	17
Contact details	17
Telephones	17
Office hours	17
Address	17

SPECIFICATIONS

Overview

Lightly-used, long-range cruiser with new electronics package and recent service.

Basic Information

Category: cruiser

Sub Category: Express

Model Year: 2015

Year Built: 2015

Country: United States

Dimensions

LOA: 54' (16.46mm)

LOD: 52' (15.85mm)

Beam: 16.5

Max Draft: 5' 1" (1.55mm)

Speed, Capacities and Weight

Cruise Speed: 30 Knots Kts. (35 MPH)

Gross Tonnage: 30.31 Pounds

Water Capacity: 159 Gallons

Holding Tank: 74 Gal Gallons

Fuel Capacity: 740 Gal Gallons

Accommodations

Total Cabins: 3

Total Heads: 2

Hull and Deck Information

Hull Material: Fiberglass

Deck Material: Teak

Hull Color: Flag Blue

Engine Information

Engines: 2

Manufacturer: MAN

Engine Type: Inboard

Fuel Type: Diesel

PHOTOS

Beam Shot



Port Hull



Starboard Bow Running Shot



Starboard Beam Running Shot



Starboard Quarter Running Shot



Starboard Salon Settee Looking Aft



Salon U Settee Looking Aft



Salon U-Settee Looking Forward



Salon Evening



Pilothouse Looking Forward



Helm



Helm Dash



Carbon Fibre Wheel



Helm Double Settee



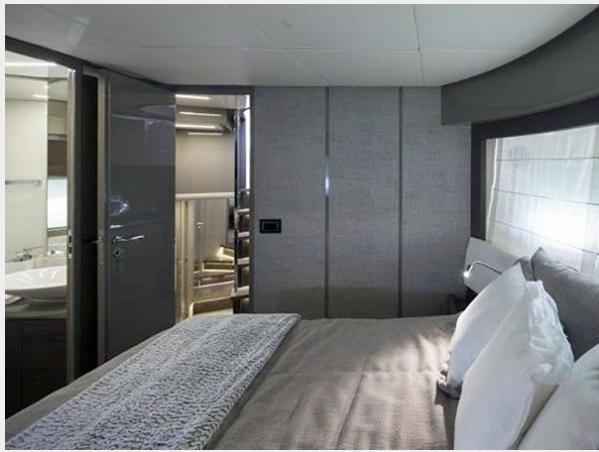
Port Salon Cabinetry



Master Berth



Master Cabin Looking Aft



Master Head



Starboard Guest Cabin Looking Aft



Guest Head Evening



Head Tile Detail



Port Cabin Looking Aft



Illuminated Stairway



Looking Down at Galley



Galley Looking Aft



Salon Dedicated Dish and Glass Storage



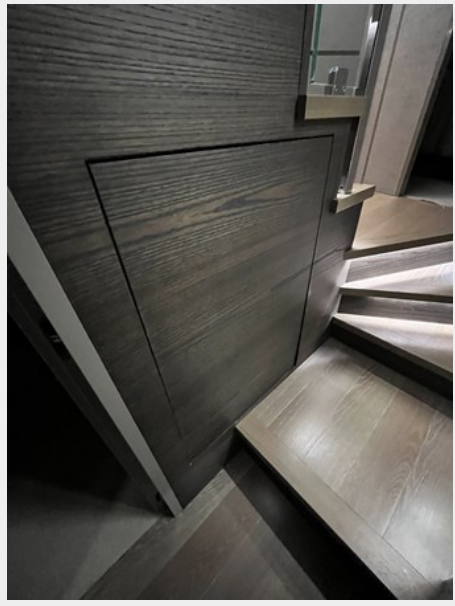
Stand-up Refrigerator



Galley Sink



Interior Sole and Lighting Detail



Foredeck w Sunpad



Anchor Windlass and Cleats



Foredeck Sunbathing Pad



Flybridge Settee



Flybridge Helm Dash



Flybridge Engine Controls



Helm Switches



Helm Switches Detail



Wireless Yacht Controller



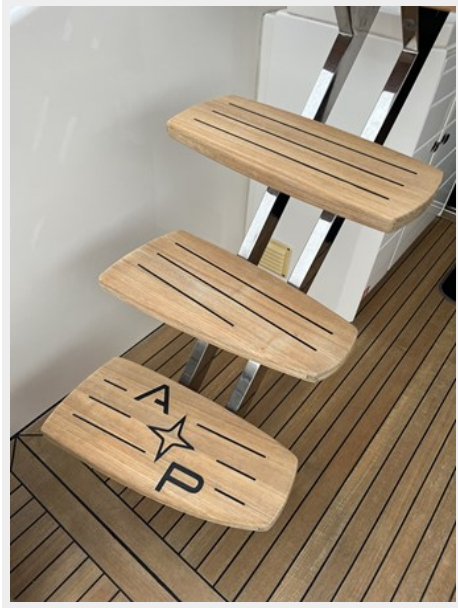
Cockpit Looking Forward to Port



Cockpit Looking Forward to Starboard



Flybridge Steps



Cockpit Aft



Cockpit L Settee



Cockpit Looking Aft from Salon



Port Quarter at Dock



Tender Garage Door Open



Swim Platform 'Up'



Swim Platform 'Down'



Starboard Engine



Onan Generator



Racor Fuel Filters



Prop



CONTACTS

Andrey Shestakov, leading yacht broker of the sales department of Shestakov Yacht Sales Inc. Shestakov Yacht Sales Inc., the official representative of the Miami/Fort Lauderdale FL headquarters.

Contact details

Email: andrey@shestakovyachtsales.com

Web: shestakovyachtsales.com/en/

Telephones

USA: +1(954)274-4435

Office hours

Monday – Saturday: **9:00 - 21:00** EDT

Sunday: **closed**

Address



Harbour Towne Marina, 850 NE 3rd St,
STE 213, Dania, FL 33004