

HALCYON — SANLORENZO



Builder: SANLORENZO

Year Built: 2018

Model: Motor Yacht

Price: \$10,450,000 USD

Location: United States

LOA: 111' 11" (34.1mm)

Beam: 25.13

Max Draft: 6' 10" (2.06mm)

Cruise Speed: 11 Knots Kts. (13 MPH)

Max Speed: 18 Knots Kts. (21 MPH)

Our experienced yacht broker, Andrey Shestakov, will help you choose and buy a yacht that best suits your needs **HALCYON — SANLORENZO** from our catalogue. Presently, at Shestakov Yacht Sales Inc., we have a wide variety of yachts available on our sale's list. We also work in close contact with all the big yacht manufacturers from all over the world.

If you would like to buy a yacht **HALCYON — SANLORENZO** or would like help answering any questions concerning purchasing, selling or chartering a yacht, please call **+1(954)274-4435**

TABLE OF CONTENTS

TABLE OF CONTENTS	2
SPECIFICATIONS	3
Overview	3
Basic Information	3
Dimensions	3
Speed, Capacities and Weight	3
Accommodations	4
Hull and Deck Information	4
Engine Information	4
PHOTOS	5
CONTACTS	13
Contact details	13
Telephones	13
Office hours	13
Address	13

SPECIFICATIONS

Overview

This is a fantastic opportunity to purchase the highly sought after 2018 Sanlorenzo SD112. Full US Specification complete with shore power frequency convertors for European use. Interior design & styling by Marty Lowe, with a light Beach house décor throughout. Her layout consists of 5 suites including the master suite on the main deck forward and four lower guest suites: 2 doubles, 2 twins both complete with pullman bunks. Sleeping 12 in total. GRP construction with a top speed of 18 knots and a shallow draft of 2.06m fit for cruising both the Mediterranean and the Florida-Bahamas-Caribbean.

Basic Information

Category: Motor Yacht

Model Year: 2018

Year Built: 2018

Country: United States

Dimensions

LOA: 111' 11" (34.1mm)

Beam: 25.13

Max Draft: 6' 10" (2.06mm)

Speed, Capacities and Weight

Cruise Speed: 11 Knots Kts. (13 MPH)

Cruise Speed Range: 2750

Max Speed: 18 Knots Kts. (21 MPH)

Gross Tonnage: 266 Pounds

Water Capacity: 4000 Gallons

Holding Tank: 528.34 Gal Gallons

Fuel Capacity: 7396.82 Gal Gallons

Accommodations

Total Cabins: 5

Sleeps: 12

Crew Cabin: 6

Crew Berths: 6

Hull and Deck Information

Hull Material: GRP

Deck Material: Teak

Hull Configuration: Semi-Displacement

Hull Color: Cream

Exterior Designer: Francesco Paszkowski

Interior Designer: Francesco Paszkowski

Engine Information

Engines: 2

Manufacturer: Caterpillar

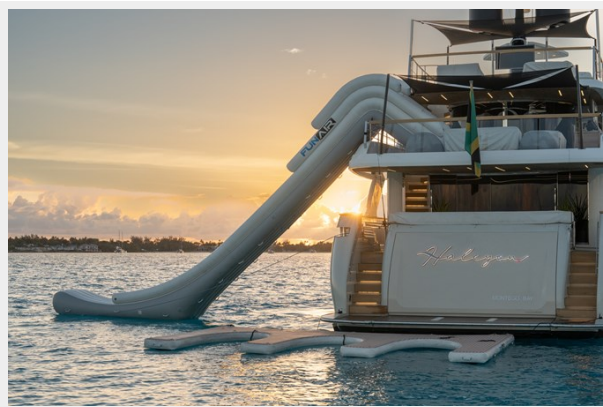
Engine Type: Inboard

Fuel Type: Diesel

PHOTOS



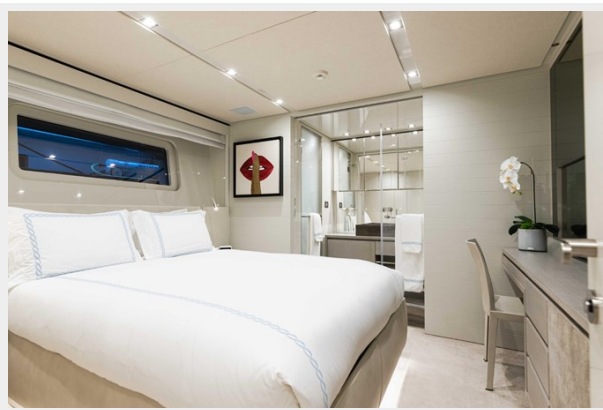


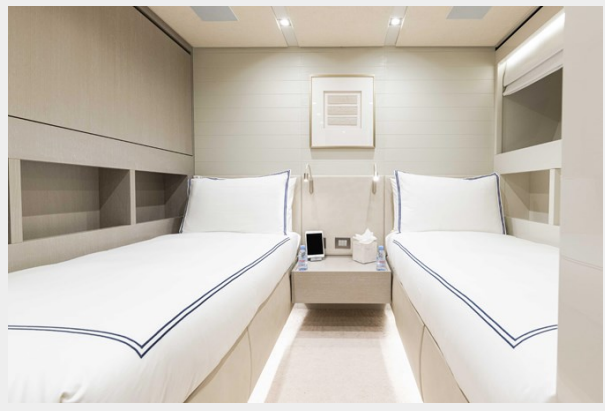












CONTACTS

Andrey Shestakov, leading yacht broker of the sales department of Shestakov Yacht Sales Inc. Shestakov Yacht Sales Inc., the official representative of the Miami/Fort Lauderdale FL headquarters.

Contact details

Email: andrey@shestakovyachtsales.com

Web: shestakovyachtsales.com/en/

Telephones

USA: +1(954)274-4435

Office hours

Monday – Saturday: **9:00 - 21:00** EDT

Sunday: **closed**

Address



Harbour Towne Marina, 850 NE 3rd St,
STE 213, Dania, FL 33004