

PAN OCEANIC 43 — PAN OCEANIC MARINE



Builder: PAN OCEANIC MARINE

Year Built: 1986

Model: Cruising Sailboat

Price: \$135,000 USD

Location: United States

LOA: 42' 11" (13.08mm)

Beam: 13

Max Draft: 5' 7" (1.7mm)

Cruise Speed: 6 Knots Kts. (7 MPH)

Max Speed: 9 Knots Kts. (10 MPH)

Our experienced yacht broker, Andrey Shestakov, will help you choose and buy a yacht that best suits your needs **PAN OCEANIC 43 — PAN OCEANIC MARINE** from our catalogue. Presently, at **Shestakov Yacht Sales Inc.**, we have a wide variety of yachts available on our sale's list. We also work in close contact with all the big yacht manufacturers from all over the world.

If you would like to buy a yacht **PAN OCEANIC 43 — PAN OCEANIC MARINE** or would like help answering any questions concerning purchasing, selling or chartering a yacht, please call **+1(954)274-4435**

TABLE OF CONTENTS

TABLE OF CONTENTS	2
SPECIFICATIONS	4
Overview	4
Basic Information	5
Dimensions	5
Speed, Capacities and Weight	5
Accommodations	5
Hull and Deck Information	6
Engine Information	6
PHOTOS	7
3	7
2	7
4	7
5	7
6	8
7	8
9	8
8	8
10	9
11	9
12	9
13	9
14	9
15	9
17	10
16	10
19	10
20	10

21	11
22	11
23	11
24	11
25	11
26	11
27	12
CONTACTS	13
Contact details	13
Telephones	13
Office hours	13
Address	13

SPECIFICATIONS

Overview

The BREWER OCEANIC 43 is one of the finest deep water cruising boats under 70 feet ever designed. It has been said that Ted Brewer got it exactly right on this vessel. Built by Pan-Oceanic Marine in Manila, Philippines, it is designed to accommodate the need for a true blue water, cutter rigged cruiser, with a legitimate two station pilothouse arrangement to add comfort and safety in heavy weather. The Pan Oceanic 43 is a confirmed passage maker. The family of Brewer Oceanics have been around long enough now to be tried and true, proving themselves over and over as one of the foremost offshore cruising yachts. The flush deck design offers easy access to the fore-deck, as well as increased living space below. The cutaway under body below, known as the Brewer bite, has reduced wetted surface with its cutaway forefoot, skeg protected rudder, and keel protected propeller. The signature Brewer cockpit offers excellent visibility from the outside helm station, and incredible comfort from the pilothouse steering station. The following are some of the unique characteristics of this Oceanic 43' Cutter S/Y DUENDE:

- The layout between port and starboard is very well balanced with heads and berths on each side of the vessel. This makes for ideal comfort on either tack in any sort of seaway.
- She was ordered with hull insulation from the waterline to the deck. The insulation is composed of 1" foam covered with 2 layers of fiberglass. This makes for an incredibly quiet boat underway and also keeps the interior warmer in cold climates and quite cool in hot climates.
- The canoe stern design not only provides great safety in a following sea, but also prevents ?hull slap? at the stern when at anchor or at the dock. The slap of water beneath an overhanging stern is an irritating noise, particularly while one is trying to sleep.
- Seasoned cruisers know the value of the huge fuel and water tank-age on board, which is unmatched when compared to other modern heavy displacement boats.
- Her stern customized platform and ladder area great to jump to the water and fishing.
- Vetus Bow Thruster.

Duende V went through a huge refit in 2022. NEW HULL PAINT NEW ZINCS NEW BATTERIES BLISTERS FIXED BOTTOM PAINT RUDDER RE FORCED TEAK DECK REPAIRED AND SANDED NEW BATTERY CHARGER NEW BOW THRUSTER CONTROL NEW JABSCO FRESH WATER PUMP **GALLEY:** The galley has everything close to hand and vast storage, the large forward facing countertop houses 50 litre fridge compartment. Double stainless sink. 4 burner gas stove and oven **ELECTRICS AND BATTERIES:** The yacht's AC system is 110 VAC, a 110 VAC shore power inlet and step The yacht's DC system is 12VDC. ProNautic 1250P Marine Charger, 12V/50A (2022) **Batteries:** 6 4D

House Batteries (2022)1 start battery (2022)*Charging:*Air 30 Primus Wind Power**ELECTRONICS & NAVIGATION**Raymarine Auto pilotIcom Sigle side BandIcom VHF Vetus Bow Thruster**ENGINE:**Sole Diesel SM 75 2000 Hrs (1998)Water pump (2021)Services (2022)**MAST/ RIGGING:**Furles Selden Furlex S Model For GenoaFurler Selden Furlex S Model For JibMast furling main sail systemFull Height mast steps.Rigging inspected and overhauled (2017) Before cruising across the Caribbean. **DECK GEAR:**Lewmar 2 StbLewamr 2 Port SideLewmar 2Lewmas Mast 2**ANCHOR GEAR**Windlass Quick (2021)100 ft chain Bruce Stainless Steel Anchor **SAIL INVENTORY:**Mainsail (2019 - Average conditions)Genoa (2018 - Average conditions)**DINGHY & OUTBOARDS:**8 HP YAMAH**COVERS AND OWNING:**Bimini (2020)Cockpit full coverFull set of cockpit cushion**EXTRAS:**Westinghouse Portable GeneratorLG Portable Air Conditioning110V Medium fridge installed in twin cabin Davit system for DinghySpares for electrical, plumbing, engine etc**ACCOMODATION:**V- Berth cabin (Bow)Twin cabin Stb sideTwin berth (Bridge - Nav station)2 heads

Basic Information

Category: Cruising Sailboat	Model Year: 1986
Year Built: 1986	Country: United States

Dimensions

LOA: 42' 11" (13.08mm)	Beam: 13
Max Draft: 5' 7" (1.7mm)	

Speed, Capacities and Weight

Cruise Speed: 6 Knots Kts. (7 MPH)	Max Speed: 9 Knots Kts. (10 MPH)
Water Capacity: 125 Gallons	Fuel Capacity: 180 Gal Gallons

Accommodations

Total Cabins: 3	Total Berths: 3
Total Heads: 2	

Hull and Deck Information

Hull Material: Fiberglass

Deck Material: Teak

Hull Configuration: Long Keel

Hull Color: Beige

Hull Designer: Ted Brewer

Engine Information

Engines: 2

Manufacturer: Sole

PHOTOS

2



3



4



5



6



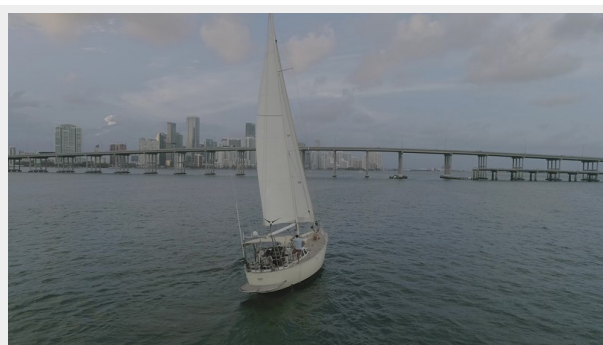
7



9



8



10



11



12



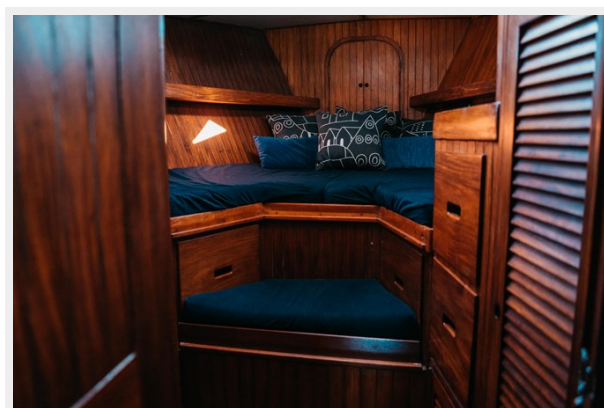
13



14



15



16



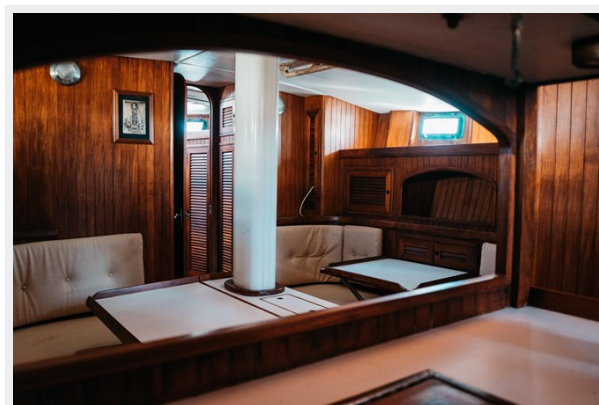
17



19



20



21



22



23



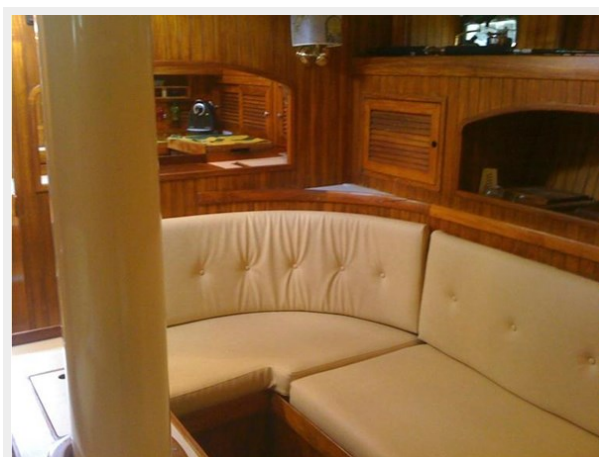
24



25



26



27



CONTACTS

Andrey Shestakov, leading yacht broker of the sales department of Shestakov Yacht Sales Inc. Shestakov Yacht Sales Inc., the official representative of the Miami/Fort Lauderdale FL headquarters.

Contact details

Email: **andrey@shestakovyachtsales.com**

Web: shestakovyachtsales.com/en/

Telephones

USA: **+1(954)274-4435**

Office hours

Monday – Saturday: **9:00 - 21:00** EDT

Sunday: **closed**

Address



Harbour Towne Marina, 850 NE 3rd St,
STE 213, Dania, FL 33004