

PAN OCEANIC 43 — PAN OCEANIC MARINE



Судостроитель: PAN OCEANIC MARINE

Год постройки: 1986

Модель: Крейсерская яхта

Цена: \$135,000 USD

Местонахождение: United States

Длина общая: 42' 11" (13.08mm)

Ширина: 13

Макс. осадка: 5' 7" (1.7mm)

Крейс. скорость: 6 Knots Kts. (7 MPH)

Макс. скорость: 9 Knots Kts. (10 MPH)

Купить **PAN OCEANIC 43 — PAN OCEANIC MARINE** а также выбрать подходящую вам яхту из нашего каталога яхт вам поможет опытный яхтенный брокер Андрей Шестаков. На сегодняшний день компания **Shestakov Yacht Sales Inc.** имеет большое количество яхт в собственном списке продаж, а также тесно сотрудничает со всеми крупными яхтенными производителями по всему миру. Для того чтобы купить яхту **PAN OCEANIC 43 — PAN OCEANIC MARINE** а также проконсультироваться по любому вопросу связанному с покупкой, продажей, чартером яхт позвоните по телефону **+7(918)465-66-44**.

ОГЛАВЛЕНИЕ

ОГЛАВЛЕНИЕ	2
ХАРАКТЕРИСТИКИ	4
Обзор	4
Основная информация	5
Размеры	5
Скорость, вместимость и масса	5
Размещение	5
Корпус и палуба	6
Информация о двигателе	6
ФОТОГРАФИИ	7
3	7
2	7
4	7
5	7
6	8
7	8
9	8
8	8
10	9
11	9
12	9
13	9
14	9
15	9
17	10
16	10
19	10
20	10

21	11
22	11
23	11
24	11
25	11
26	11
27	12
КОНТАКТЫ	13
Контактная информация	13
Телефоны	13
Время работы	13
Адрес	13

ХАРАКТЕРИСТИКИ

Обзор

The BREWER OCEANIC 43 is one of the finest deep water cruising boats under 70 feet ever designed. It has been said that Ted Brewer got it exactly right on this vessel. Built by Pan-Oceanic Marine in Manila, Philippines, it is designed to accommodate the need for a true blue water, cutter rigged cruiser, with a legitimate two station pilothouse arrangement to add comfort and safety in heavy weather. The Pan Oceanic 43 is a confirmed passage maker. The family of Brewer Oceanics have been around long enough now to be tried and true, proving themselves over and over as one of the foremost offshore cruising yachts. The flush deck design offers easy access to the fore-deck, as well as increased living space below. The cutaway under body below, known as the Brewer bite, has reduced wetted surface with its cutawayforefoot, skeg protected rudder, and keel protected propeller. The signature Brewer cockpit offers excellent visibility from the outside helm station, and incredible comfort from the pilothouse steering station. The following are some of the unique characteristics of this Oceanic 43' Cutter S/Y DUENDE:

- The layout between port and starboard is very well balanced with heads and berths on each side of the vessel. This makes for ideal comfort on either tack in any sort of seaway.
- She was ordered with hull insulation from the waterline to the deck. The insulation is composed of 1" foam covered with 2 layers of fiberglass. This makes for an incredibly quiet boat underway and also keeps the interior warmer in cold climates and quite cool in hot climates.
- The canoe stern design not only provides great safety in a following sea, but also prevents ?hull slap? at the stern when at anchor or at the dock. The slap of water beneath an overhanging stern is an irritating noise, particularly while one is trying to sleep.
- Seasoned cruisers know the value of the huge fuel and water tank-age on board, which is unmatched when compared to other modern heavy displacement boats.
- Her stern customized platform and ladder area great to jump to the water and fishing.
- Vetus Bow Thruster.

Duende V went through a huge refit in 2022. NEW HULL PAINT NEW ZINCS NEW BATTERIES BLISTERS FIXED BOTTOM PAINT RUDDER RE FORCED TEAK DECK REPAIRED AND SANDED NEW BATTERY CHARGER NEW BOW THRUSTER CONTROL NEW JABSCO FRESH WATER PUMP **GALLEY:** The galley has everything close to hand and vast storage, the large forward facing countertop houses 50 litre fridge compartment. Double stainless sink. 4 burner gas stove and oven **ELECTRICS AND BATTERIES:** The yacht's AC system is 110 VAC, a 110 VAC shore power inlet and step The yacht's DC system is 12VDC. ProNautic 1250P Marine Charger, 12V/50A (2022) *Batteries:* 6 4D

House Batteries (2022)1 start battery (2022)*Charging:*Air 30 Primus Wind Power**ELECTRONICS & NAVIGATION**Raymarine Auto pilotlcom Sigle side Bandlcom VHF Vetus Bow Thruster**ENGINE:**Sole Diesel SM 75 2000 Hrs (1998)Water pump (2021)Services (2022)**MAST/RIGGING:**Furles Selden Furlex S Model For GenoaFurler Selden Furlex S Model For JibMast furling main sail systemFull Height mast steps.Rigging inspected and overhauled (2017) Before cruising across the Caribbean. **DECK GEAR:**Lewmar 2 StbLewamr 2 Port SideLewmar 2Lewmas Mast 2**ANCHOR GEAR**Windlass Quick (2021)100 ft chain Bruce Stainless Steel Anchor **SAIL INVENTORY:**Mainsail (2019 - Average conditions)Genoa (2018 - Average conditions)**DINGHY & OUTBOARDS:**8 HP YAMAHA**COVERS AND OWNING:**Bimini (2020)Cockpit full coverFull set of cockpit cushion**EXTRAS:**Westinghouse Portable GeneratorLG Portable Air Conditioning110V Medium fridge installed in twin cabin Davit system for DinghySpares for electrical, plumbing, engine etc**ACCOMODATION:**V- Berth cabin (Bow)Twin cabin Stb sideTwin berth (Bridge - Nav station)2 heads

Основная информация

Тип судна: Крейсерская яхта

Модельный год: 1986

Год постройки: 1986

Страна: United States

Размеры

Длина общая: 42' 11" (13.08mm)

Ширина: 13

Макс. осадка: 5' 7" (1.7mm)

Скорость, вместимость и масса

Крейс. скорость: 6 Knots Kts. (7 MPH)

Макс. скорость: 9 Knots Kts. (10 MPH)

Вместимость воды: 125 Gallons

Объем топливного бака: 180 Gal Gallons

Размещение

Всего кают: 3

Всего коек: 3

Всего ком. состава: 2

Корпус и палуба

Материал корпуса: Fiberglass

Материал палубы: Teak

Комплектация корпуса: Long Keel

Цвет корпуса: Beige

Дизайнер корпуса: Ted Brewer

Информация о двигателе

Двигатели: 2

Производитель: Sole

ФОТОГРАФИИ

2



3



4



5



6



7



9



8



10



11



12



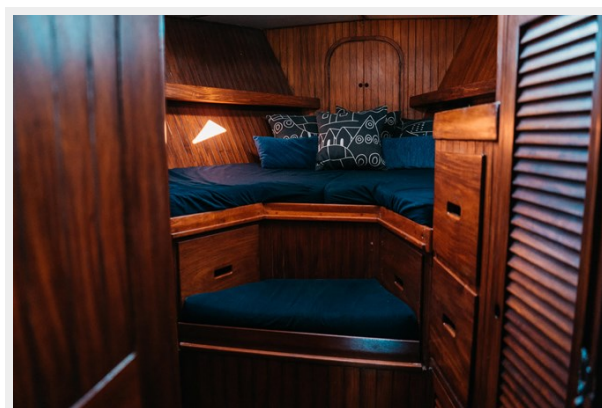
13



14



15



16



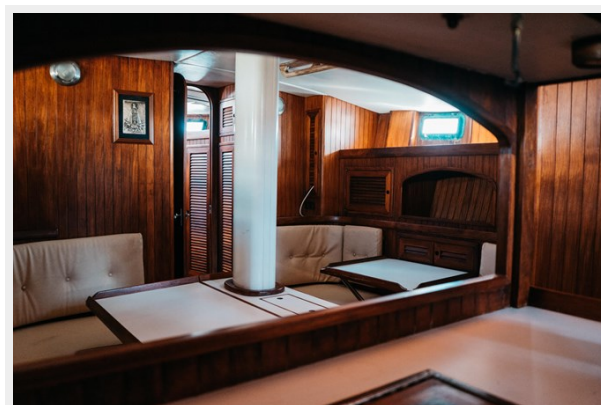
17



19



20



21



22



23



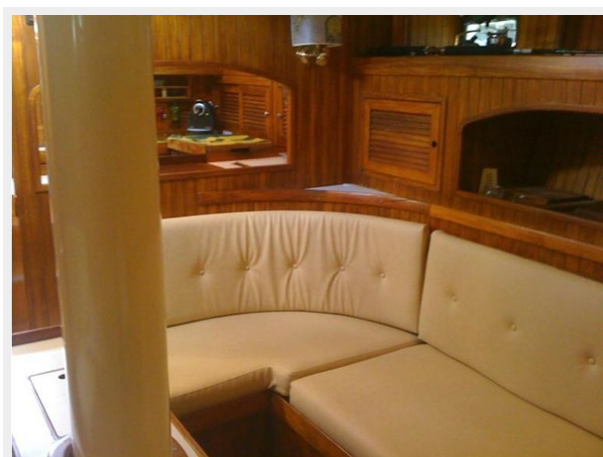
24



25



26



27



КОНТАКТЫ

Андрей Шестаков (Andrey Shestakov) – ведущий яхтенный брокер отдела продаж яхт и судов компании Shestakov Yacht Sales Inc. Официальный представитель Shestakov Yacht Sales Inc. для русскоговорящих клиентов в центральном офисе компании в Майами/Форт Лодердейл/Флорида/США.

Контактная информация

Email: andrey@shestakovyachtsales.com

Web: shestakovyachtsales.com

Телефоны

Краснодарский край: **+7(918)465-66-44**

США, Майами, Флорида: **+1(954)274-4435**

Время работы

Понедельник – Суббота: **9:00 - 21:00**
EDT

Воскресенье: **Закрито**

Адрес



Harbour Towne Marina, 850 NE 3rd St,
STE 213, Dania, FL 33004