

UNDAUNTED — PRO-LINE



Builder: PRO-LINE

Year Built: 2008

Model: Sport Fisherman

Price: \$114,000 USD

Location: United States

LOA: 32' (9.75mm)

Beam: 10.83

Min Draft: 1' 10" (0.56mm)

Our experienced yacht broker, Andrey Shestakov, will help you choose and buy a yacht that best suits your needs **Undaunted — PRO-LINE** from our catalogue. Presently, at Shestakov Yacht Sales Inc., we have a wide variety of yachts available on our sale's list. We also work in close contact with all the big yacht manufacturers from all over the world.

If you would like to buy a yacht **Undaunted — PRO-LINE** or would like help answering any questions concerning purchasing, selling or chartering a yacht, please call **+1(954)274-4435**

TABLE OF CONTENTS

TABLE OF CONTENTS	2
SPECIFICATIONS	4
Overview	4
Basic Information	4
Dimensions	4
Speed, Capacities and Weight	4
Accommodations	5
Hull and Deck Information	5
Engine Information	5
PHOTOS	6
3	6
2	6
4	6
5	6
7	7
6	7
8	7
9	7
10	8
11	8
12	8
13	8
14	9
16	9
17	9
18	9
19	10
20	10

21	10
22	10
CONTACTS	11
Contact details	11
Telephones	11
Office hours	11
Address	11

SPECIFICATIONS

Overview

From a hardcore run to the canyons to a fun day of fishing and swimming on the islands, the 32 Express is Pro-Line's answer to a true crossover boat. When you step into the cabin you can throw out the notion of "roughing it". The full galley includes freshwater sink, state of the art microwave, convenient stovetop, a flush mount refrigerator, and Staron non-porous countertops. The forward wrap-around comfort seating with flush mount dining table converts into a large bed, and to the aft of the cabin the 32 Express includes a BIG mid cabin sleeping berth. Add in lots of storage, positive lock door latches, mood lighting, low maintenance headliner, and a head that can really be called a bathroom, and you've got a cabin fit for the whole crew! Above deck the 32 Express boasts a full helm station, bench seating on the port side, an oversized bait station, flush mount tackle box, huge below deck and foam insulated fish boxes, quick access freshwater hose, a huge fight-em'-till-you-catch-em' cockpit, a collapsible rear bench seat, seating for a small army of friends and family, and a wide beam of nearly 11'. Built to take you anywhere, the 32 Express is comfortable on the fishing grounds or cruising to the best dive spot. Either way, this is one that will put you on it!

Basic Information

Category: Sport Fisherman

Model Year: 2008

Year Built: 2008

Country: United States

Dimensions

LOA: 32' (9.75mm)

Beam: 10.83

Min Draft: 1' 10" (0.56mm)

Speed, Capacities and Weight

Water Capacity: 39 Gallons

Fuel Capacity: 289 Gal Gallons

Accommodations

Total Cabins: 2

Total Berths: 4

Total Heads: 1

Hull and Deck Information

Hull Material: Fiberglass

Engine Information

Engines: 2

Manufacturer: Mercury

Engine Type: Outboard

Fuel Type: Gas

PHOTOS

2



3



4



5



6



7



8



9



10



11



12



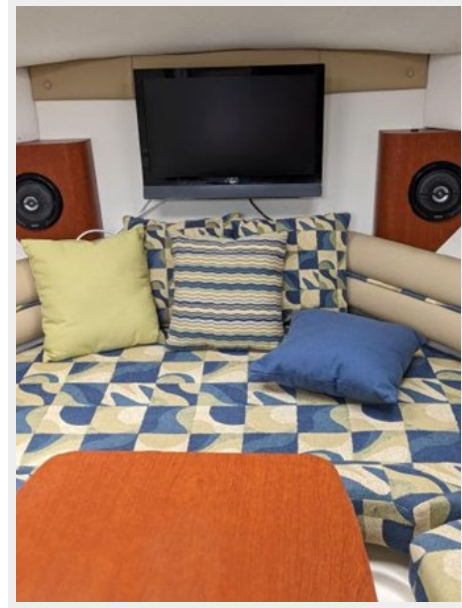
13



14



16



17



18



19



20



21



22



CONTACTS

Andrey Shestakov, leading yacht broker of the sales department of Shestakov Yacht Sales Inc. Shestakov Yacht Sales Inc., the official representative of the Miami/Fort Lauderdale FL headquarters.

Contact details

Email: andrey@shestakovyachtsales.com

Web: shestakovyachtsales.com/en/

Telephones

USA: +1(954)274-4435

Office hours

Monday – Saturday: **9:00 - 21:00** EDT

Sunday: **closed**

Address



Harbour Towne Marina, 850 NE 3rd St,
STE 213, Dania, FL 33004