

2750 WA — HYDRA-SPORTS



Builder: HYDRA-SPORTS

Year Built: 1997

Model: walkaround

Price: PRICE ON APPLICATION

Location: United States

LOA: 27' 5" (8.36mm)

Beam: 9.41

Max Draft: 1' 9" (0.53mm)

Our experienced yacht broker, Andrey Shestakov, will help you choose and buy a yacht that best suits your needs 2750 WA — HYDRA-SPORTS from our catalogue. Presently, at Shestakov Yacht Sales Inc., we have a wide variety of yachts available on our sale's list. We also work in close contact with all the big yacht manufacturers from all over the world.

If you would like to buy a yacht 2750 WA — HYDRA-SPORTS or would like help answering any questions concerning purchasing, selling or chartering a yacht, please call +1(954)274-4435

TABLE OF CONTENTS

TABLE OF CONTENTS	2
SPECIFICATIONS	4
Overview	4
Basic Information	4
Dimensions	4
Speed, Capacities and Weight	5
Accommodations	5
Hull and Deck Information	5
Engine Information	5
PHOTOS	6
2	6
3	6
2	6
3	6
4	6
5	6
6	7
7	7
8	7
9	7
10	7
11	7
12	8
13	8
14	8
15	8
16	8
17	8

18	9
19	9
20	9
21	9
22	9
23	9
24	10
25	10
26	10
27	10
28	10
29	10
30	11
31	11
32	11
33	11
34	11
35	11
36	12
37	12
38	12
39	12
CONTACTS	13
Contact details	13
Telephones	13
Office hours	13
Address	13

SPECIFICATIONS

Overview

This **Low Hour** Hydra-Sports 2750 Walk Around was **Re-Powered in 2017** with Low Hour Reliable Twin 200 HP Suzuki 4 Strokes, and has **Only 321 Hours**.

"The Hydra-Sports 2750 WA delivers the convenience of a roomy forward cabin with all the features necessary for serious offshore angling. The 2750 WA features the Hydra-Sports Deep-Vee hull for strong, efficient performance and the smoothest, driest ride in blue water. The hull is hand-laid for superior strength without excess weight, and the keel is reinforced with Kevlar, the same material used in bullet-proof vests" ...Hydra Sports Boats

This Hydra Sports 2750 Offers a V-berth, and a Aft Bunk, Air Conditioning, Enclosed Head with Shower, New Props, Auto Pilot, Radar, Taco Outriggers, Windlass, and Updated Electronics.

A Tri Axle Load Master Aluminum Torsion Axle Trailer also goes with the boat.

Documentation of Engine Hours, Codes, and RPMS the engines have been run at was verified by a Authorized Mechanic on 6-14-2023 and is available.

Please check the FULL SPECS for more details and give us a call for more information and to schedule an appointment to have a look for yourself!

Basic Information

Category: walkaround

Sub Category: Walk-around

Model Year: 1997

Year Built: 1997

Country: United States

Dimensions

LOA: 27' 5" (8.36mm)

Beam: 9.41

Max Draft: 1' 9" (0.53mm)

Speed, Capacities and Weight

Water Capacity: 32 Gallons

Fuel Capacity: 200 Gal Gallons

Accommodations

Total Cabins: 11

Total Heads: 1

Hull and Deck Information

Hull Material: Fiberglass

Engine Information

Engines: 2

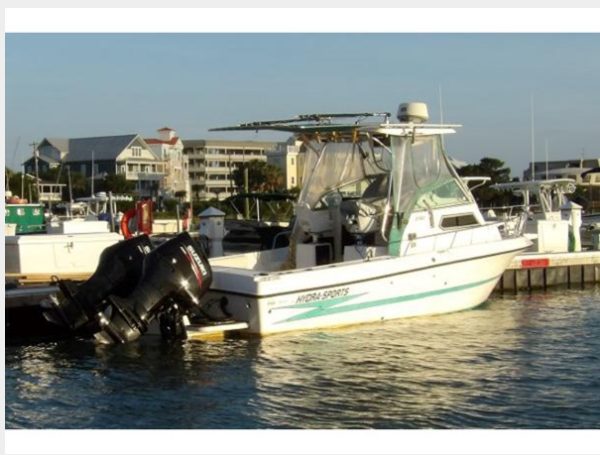
Manufacturer: Suzuki

Engine Type: Outboard

Fuel Type: Gas/Petrol

PHOTOS

2



3



2



3



4



5



6



7



8



9



10



11



12



13



14



15



16



17



18



19



20



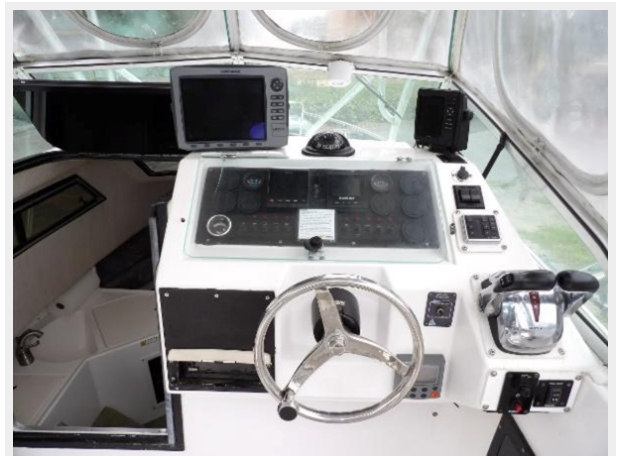
21



22



23



24



25



26



27



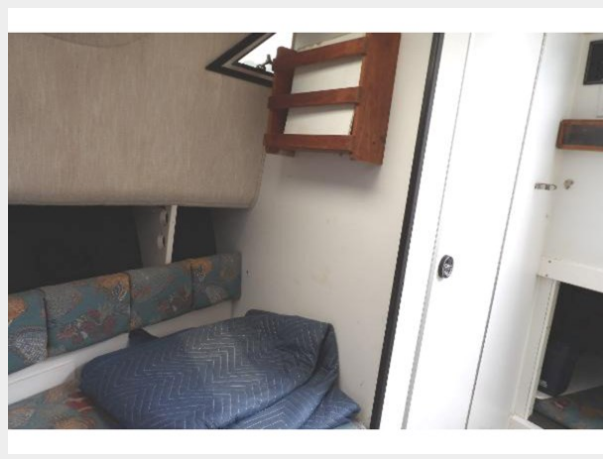
28



29



30



31



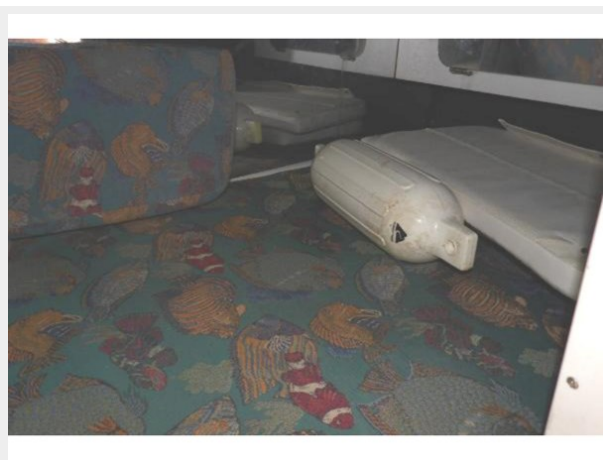
32



33



34



35



36



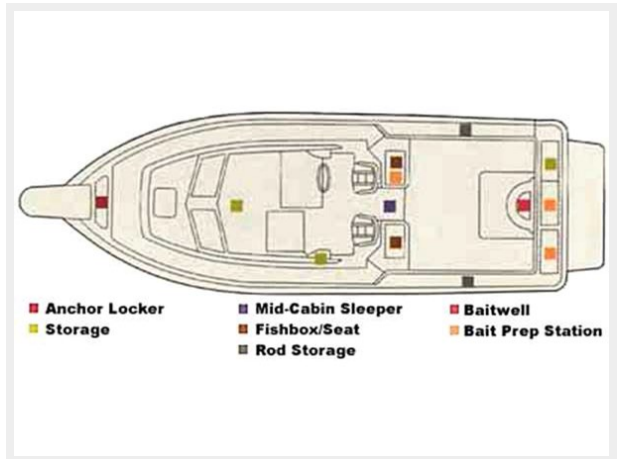
37



38



39



CONTACTS

Andrey Shestakov, leading yacht broker of the sales department of Shestakov Yacht Sales Inc. Shestakov Yacht Sales Inc., the official representative of the Miami/Fort Lauderdale FL headquarters.

Contact details

Email: andrey@shestakovyachtsales.com

Web: shestakovyachtsales.com/en/

Telephones

USA: +1(954)274-4435

Office hours

Monday – Saturday: **9:00 - 21:00** EDT

Sunday: **closed**

Address



Harbour Towne Marina, 850 NE 3rd St,
STE 213, Dania, FL 33004