

MEDUSA — BRUCE ROBERTS



Builder: BRUCE ROBERTS

Year Built: 1980

Model: Cutter

Price: PRICE ON APPLICATION

Location: United States

LOA: 53' (16.15mm)

Beam: 16.41

Min Draft: 6' 9" (2.06mm)

Max Draft: 6' 9" (2.06mm)

Our experienced yacht broker, Andrey Shestakov, will help you choose and buy a yacht that best suits your needs **Medusa — BRUCE ROBERTS** from our catalogue. Presently, at Shestakov Yacht Sales Inc., we have a wide variety of yachts available on our sale's list. We also work in close contact with all the big yacht manufacturers from all over the world.

If you would like to buy a yacht **Medusa — BRUCE ROBERTS** or would like help answering any questions concerning purchasing, selling or chartering a yacht, please call **+1(954)274-4435**

TABLE OF CONTENTS

TABLE OF CONTENTS	2
SPECIFICATIONS	6
Overview	6
Basic Information	6
Dimensions	6
Speed, Capacities and Weight	6
Accommodations	6
Hull and Deck Information	6
Engine Information	6
PHOTOS	7
0_2799978_53_bruce_roberts_port_forward_profile1	7
1_2799978_53_bruce_roberts_port_forward_profile2	7
2_2799978_53_bruce_roberts_starboard_forward_profile	7
3_2799978_53_bruce_roberts_anchor	7
5_2799978_53_bruce_roberts_forward_roller_furler	7
4_2799978_53_bruce_roberts_anchor_windlass	7
6_2799978_53_bruce_roberts_aft_roller_furler	7
7_2799978_53_bruce_roberts_spinnaker_pole	7
8_2799978_53_bruce_roberts_foredeck1	8
9_2799978_53_bruce_roberts_foredeck2	8
11_2799978_53_bruce_roberts_port_side_deck1	8
10_2799978_53_bruce_roberts_foredeck_aft	8
12_2799978_53_bruce_roberts_port_side_deck2	8
13_2799978_53_bruce_roberts_starboard_side_deck1	8
14_2799978_53_bruce_roberts_starboard_side_deck2	8
15_2799978_53_bruce_roberts_forward_traveler	8
17_2799978_53_bruce_roberts_port_standing_rigging	9
16_2799978_53_bruce_roberts_boom_vang	9

18_2799978_53_bruce_roberts_starboard_standing_rigging1	9
19_2799978_53_bruce_roberts_starboard_standing_rigging2	9
20_2799978_53_vruce_roberts_aft_traveler	9
21_2799978_53_bruce_roberts_cockpit_hardtop	9
22_2799978_53_bruce_roberts_cockpit_forward	9
23_2799978_53_bruce_roberts_cockpit_aft	9
24_2799978_53_bruce_roberts_cockpit_port	10
25_2799978_53_bruce_roberts_cockpit_port_forward	10
26_2799978_53_bruce_roberts_cockpit_starboard	10
27_2799978_53_bruce_roberts_cockpit_starboard_forward	10
28_2799978_53_bruce_roberts_cockpit_helm	10
29_2799978_53_bruce_roberts_cockpit_port_seating	10
30_2799978_53_bruce_roberts_cockpit_starboard_seating	10
31_2799978_53_bruce_roberts_aftdeck	10
32_2799978_53_bruce_roberts_aftdeck_forward	11
33_2799978_53_bruce_roberts_aftdeck_starboard	11
34_2799978_53_bruce_roberts_bbq_grill	11
35_2799978_53_bruce_roberts_lazarette_access	11
36_2799978_53_bruce_roberts_aft_anchor_windlass	11
37_2799978_53_bruce_roberts_tender1	11
39_2799978_53_bruce_roberts_tender_outboard	11
38_2799978_53_bruce_roberts_tender2	11
40_2799978_53_bruce_roberts_tender_davits	12
41_2799978_53_bruce_roberts_salon_forward	12
42_2799978_53_bruce_roberts_salon_aft	12
43_2799978_53_bruce_roberts_salon_port	12
44_2799978_53_bruce_roberts_salon_starboard	12
45_2799978_53_bruce_roberts_salon_port_seating	12
46_2799978_53_bruce_roberts_salon_starboard_seating	12

47_2799978_53_bruce_roberts_salon_heater	12
48_2799978_53_bruce_roberts_galley1	13
49_2799978_53_bruce_roberts_galley2	13
50_2799978_53_bruce_roberts_galley3	13
51_2799978_53_bruce_roberts_nav_station1	13
53_2799978_53_bruce_roberts_master_stateroom_companionway	13
52_2799978_53_bruce_roberts_nav_station2	13
54_2799978_53_bruce_roberts_master_stateroom	13
55_2799978_53_bruce_roberts_master_stateroom_port	13
56_2799978_53_bruce_roberts_master_stateroom_starboard	14
57_2799978_53_bruce_roberts_master_stateroom_benchseatberth	14
58_2799978_53_bruce_roberts_master_stateroom_head	14
59_2799978_53_bruce_roberts_forward_guest_stateroom	14
60_2799978_53_bruce_roberts_forward_guest_stateroom_port	14
61_2799978_53_bruce_roberts_forward_guest_stateroom_starboard	14
62_2799978_53_bruce_roberts_port_guest_stateroom	14
63_2799978_53_bruce_roberts_guest_head	14
64_2799978_53_bruce_roberts_guest_shower	15
65_2799978_53_bruce_roberts_engine_room	15
66_2799978_53_bruce_roberts_auxilairy	15
67_2799978_53_bruce_roberts_racor_fuel_filters	15
68_2799978_53_bruce_roberts_water_filtration_system	15
69_2799978_53_bruce_roberts_water_heater	15
70_2799978_53_bruce_roberts_watermaker	15
71_2799978_53_bruce_roberts_electrical_panels1	15
72_2799978_53_bruce_roberts_electrical_panels2	16
73_2799978_53_bruce_roberts_generator	16
74_2799978_53_bruce_roberts_inverters	16
75_2799978_53_bruce_roberts_solar_panels1	16

77_2799978_53_bruce_roberts_solar_panel_controllers	16
76_2799978_53_bruce_roberts_solar_panels2	16
78_2799978_53_bruce_roberts_wind_generator	16
79_2799978_53_bruce_roberts_wind_generator_controller	16
80_2799978_53_bruce_roberts_smart_plug_shore_power_adaptors	17
CONTACTS	18
Contact details	18
Telephones	18
Office hours	18
Address	18

SPECIFICATIONS

Overview

Medusa is a 1980 53' Bruce Roberts center cockpit cutter in good condition. She offers a single Yanmar 90 HP auxiliary, New Phasor 10 kW generator, 2 X Xantrex 3,000 watt inverters, solar panels, wind generator, watermaker, dripless shaft seal, reverse cycle air conditioning/heating system, bow and stern thrusters, Achilles 2020 RIB tender with a Tohatsu 50 HP 4 stroke outboard and a three stateroom 2 head layout. Medusa has been extensively upgraded and updated.

Basic Information

Category: Cutter

Model Year: 1980

Year Built: 1980

Country: United States

Dimensions

LOA: 53' (16.15mm)

Beam: 16.41

Min Draft: 6' 9" (2.06mm)

Max Draft: 6' 9" (2.06mm)

Speed, Capacities and Weight

Water Capacity: 160 Gallons

Fuel Capacity: 160 Gal Gallons

Accommodations

Total Cabins: 3

Total Heads: 2

Hull and Deck Information

Hull Material: Fiberglass

Engine Information

Engines: 1

Manufacturer: Yanmar

Engine Type: Inboard

Fuel Type: Diesel

PHOTOS

0_2799978_53_bruce_roberts_port_forward_profile1



1_2799978_53_bruce_roberts_port_forward_profile2



2_2799978_53_bruce_roberts_starboard_forward_profile



3_2799978_53_bruce_roberts_anchor



4_2799978_53_bruce_roberts_anchor_windlass



5_2799978_53_bruce_roberts_forward_roller_furler



6_2799978_53_bruce_roberts_aft_roller_furler



7_2799978_53_bruce_roberts_spinnaker_pole



8_2799978_53_bruce_roberts_foredeck1



9_2799978_53_bruce_roberts_foredeck2



10_2799978_53_bruce_roberts_foredeck_aft



11_2799978_53_bruce_roberts_port_side_deck1



12_2799978_53_bruce_roberts_port_side_deck2



13_2799978_53_bruce_roberts_starboard_side_deck1



14_2799978_53_bruce_roberts_starboard_side_deck2



15_2799978_53_bruce_roberts_forward_traveler



17_2799978_53_bruce_roberts_port_standing_rigging



16_2799978_53_bruce_roberts_boom_vang



18_2799978_53_bruce_roberts_starboard_standing_rigging1



19_2799978_53_bruce_roberts_starboard_standing_rigging2



20_2799978_53_vruce_roberts_aft_traveler



21_2799978_53_bruce_roberts_cockpit_hardtop



22_2799978_53_bruce_roberts_cockpit_forward



23_2799978_53_bruce_roberts_cockpit_aft



24_2799978_53_bruce_roberts_cockpit_port



25_2799978_53_bruce_roberts_cockpit_port_forward



26_2799978_53_bruce_roberts_cockpit_starboard



27_2799978_53_bruce_roberts_cockpit_starboard_forward



28_2799978_53_bruce_roberts_cockpit_helm



29_2799978_53_bruce_roberts_cockpit_port_seating



30_2799978_53_bruce_roberts_cockpit_starboard_seating



31_2799978_53_bruce_roberts_afdeck



32_2799978_53_bruce_roberts_afdeck_forward



33_2799978_53_bruce_roberts_afdeck_starboard



34_2799978_53_bruce_roberts_bbq_grill



35_2799978_53_bruce_roberts_lazarette_access



36_2799978_53_bruce_roberts_aft_anchor_windlass



37_2799978_53_bruce_roberts_tender1



38_2799978_53_bruce_roberts_tender2



39_2799978_53_bruce_roberts_tender_outboard



40_2799978_53_bruce_roberts_tender_davits



41_2799978_53_bruce_roberts_salon_forward



42_2799978_53_bruce_roberts_salon_aft



43_2799978_53_bruce_roberts_salon_port



44_2799978_53_bruce_roberts_salon_starboard



45_2799978_53_bruce_roberts_salon_port_seating



46_2799978_53_bruce_roberts_salon_starboard_seating



47_2799978_53_bruce_roberts_salon_heater



48_2799978_53_bruce_roberts_galley1



49_2799978_53_bruce_roberts_galley2



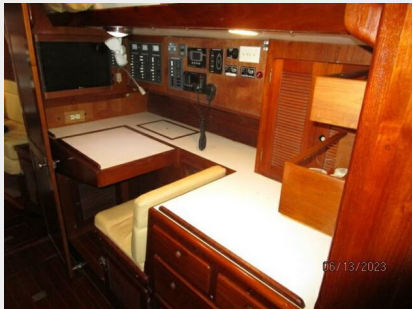
50_2799978_53_bruce_roberts_galley3



51_2799978_53_bruce_roberts_nav_station1



52_2799978_53_bruce_roberts_nav_station2



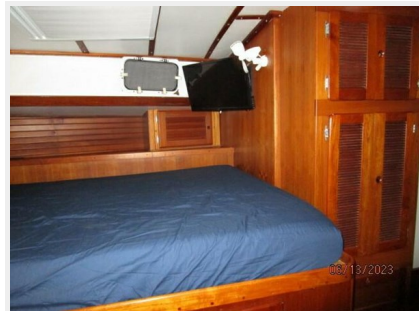
53_2799978_53_bruce_roberts_master_stateroom_companionway



54_2799978_53_bruce_roberts_master_stateroom



55_2799978_53_bruce_roberts_master_stateroom_port



56_2799978_53_bruce_roberts_master_stateroom_starboard 57_2799978_53_bruce_roberts_master_stateroom_benchseatberth



58_2799978_53_bruce_roberts_master_stateroom_head



59_2799978_53_bruce_roberts_forward_guest_stateroom



60_2799978_53_bruce_roberts_forward_guest_stateroom_port 61_2799978_53_bruce_roberts_forward_guest_stateroom_starboard



62_2799978_53_bruce_roberts_port_guest_stateroom



63_2799978_53_bruce_roberts_guest_head



64_2799978_53_bruce_roberts_guest_shower



65_2799978_53_bruce_roberts_engine_room



66_2799978_53_bruce_roberts_auxiliary



67_2799978_53_bruce_roberts_racor_fuel_filters



68_2799978_53_bruce_roberts_water_filtration_system



69_2799978_53_bruce_roberts_water_heater



70_2799978_53_bruce_roberts_watermaker



71_2799978_53_bruce_roberts_electrical_panels1



72_2799978_53_bruce_roberts_electrical_panels2



73_2799978_53_bruce_roberts_generator



74_2799978_53_bruce_roberts_inverters



75_2799978_53_bruce_roberts_solar_panels1



77_2799978_53_bruce_roberts_solar_panel_controllers



76_2799978_53_bruce_roberts_solar_panels2



78_2799978_53_bruce_roberts_wind_generator



79_2799978_53_bruce_roberts_wind_generator_controller



80_2799978_53_bruce_roberts_smart_plug_shore_power_adaptors



CONTACTS

Andrey Shestakov, leading yacht broker of the sales department of Shestakov Yacht Sales Inc. Shestakov Yacht Sales Inc., the official representative of the Miami/Fort Lauderdale FL headquarters.

Contact details

Email:
andrey@shestakovyachtsales.com

Web: shestakovyachtsales.com/en/

Telephones

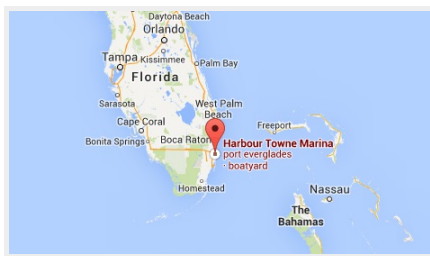
USA: **+1(954)274-4435**

Office hours

Monday – Saturday: **9:00 - 21:00 EDT**

Sunday: **closed**

Address



Harbour Towne Marina, 850 NE 3rd St,
STE 213, Dania, FL 33004