

SISSI — FEADSHIP



Builder: FEADSHIP

Year Built: 1963

Model: Motor Yacht

Price: PRICE ON APPLICATION

Location: France

LOA: 87' 11" (26.78mm)

Beam: 18.99

Max Draft: 6' (1.83mm)

Cruise Speed: 10 Knots Kts. (12 MPH)

Our experienced yacht broker, Andrey Shestakov, will help you choose and buy a yacht that best suits your needs **SISSI — FEADSHIP** from our catalogue. Presently, at Shestakov Yacht Sales Inc., we have a wide variety of yachts available on our sale's list. We also work in close contact with all the big yacht manufacturers from all over the world.

If you would like to buy a yacht **SISSI — FEADSHIP** or would like help answering any questions concerning purchasing, selling or chartering a yacht, please call **+1(954)274-4435**

TABLE OF CONTENTS

TABLE OF CONTENTS	2
SPECIFICATIONS	4
Overview	4
Basic Information	4
Dimensions	5
Speed, Capacities and Weight	5
Accommodations	5
Hull and Deck Information	5
Engine Information	5
PHOTOS	6
profile	6
profile 2	6
AIR VIEW	6
STERN	6
SIDE	6
DETAIL	6
BOW AREA	7
DETAIL 1	7
FLYBRIDGE AREA	7
SUNBED FLYBRIDGE	7
FLYBRIDGE	7
TABLE FLYBRIDGE	7
MAIN SALON	8
FLYBRIDGE 3	8
DINING TABLE	8
DOUBLE CABIN 1	8
MASTER CABIN	8
DOUBLE CABIN	8

MASTER CABIN 1	9
MASTER CABIN 2	9
GALLEY	9
COCKPIT AREA	9
LAYOUT	9
LAYOUT	9
CONTACTS	10
Contact details	10
Telephones	10
Office hours	10
Address	10

SPECIFICATIONS

Overview

The 27m classic canoe stern motor yacht named Sissi was built in 1963 by the renowned Dutch yard Feadship. Designed by De Voogt, the yacht was constructed using a combination of steel and aluminium.

In 2010/2011, SISSI underwent an extensive refit that significantly enhanced its features and amenities. The refit included a complete reconfiguration of the VIP suite, an upgraded galley and crew area, the installation of new generators, a hydraulic gangway, improved air conditioning, a hull repaint, and the installation of new navigation electronics.

Sissi offers comfortable accommodation for up to eight guests in four well-appointed cabins. The master suite boasts a king-size bed, while the newly designed VIP stateroom also features a king-size bed. Additionally, there is a double cabin with a queen-size bed and a twin cabin. Each cabin is equipped with full en-suite bathroom facilities.

The yacht's main saloon and dining area are designed as an open-plan space with a teak interior in excellent condition. The living area is spacious and features a recessed flatscreen television on the starboard side, providing a relaxed viewing experience. During the refit, most of the furniture in the main saloon was replaced, and the overheads were redone, accompanied by new recessed lighting.

Sissi offers impressive outdoor features, making it an ideal vessel for entertaining guests. It includes al fresco dining areas on the spacious foredeck and cockpit, as well as a huge flybridge. These areas provide ample space for socializing and enjoying the surrounding.

Basic Information

Category: Motor Yacht

Model Year: 1963

Year Built: 1963

Country: France

Dimensions

LOA: 87' 11" (26.78mm)

Beam: 18.99

Max Draft: 6' (1.83mm)

Speed, Capacities and Weight

Cruise Speed: 10 Knots Kts. (12 MPH)

Accommodations

Total Cabins: 4

Hull and Deck Information

Hull Material: Steel

Engine Information

Engines: 2

Manufacturer: General Motors

Engine Type: Inboard

Fuel Type: Diesel

PHOTOS

profile



profile 2



AIR VIEW



STERN



SIDE



DETAIL



DETAIL 1



BOW AREA



FLYBRIDGE AREA



SUNBED FLYBRIDGE



FLYBRIDGE



TABLE FLYBRIDGE



MAIN SALON



FLYBRIDGE 3



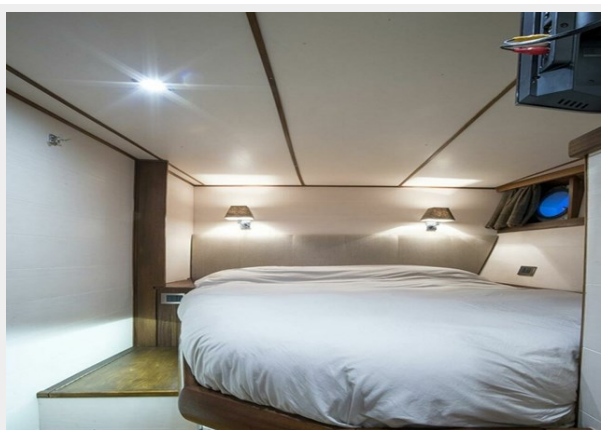
DINING TABLE



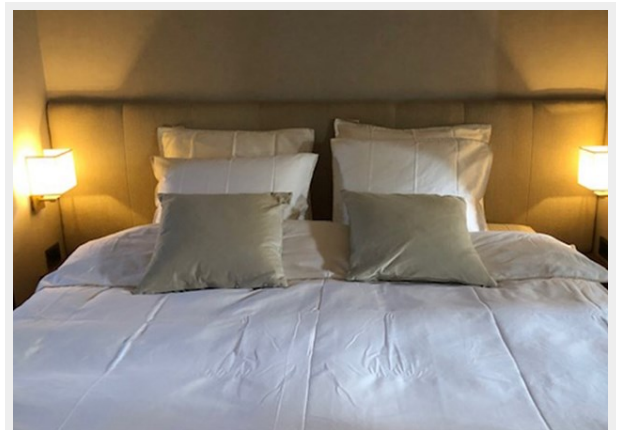
DOUBLE CABIN 1



DOUBLE CABIN



MASTER CABIN



MASTER CABIN 1



MASTER CABIN 2



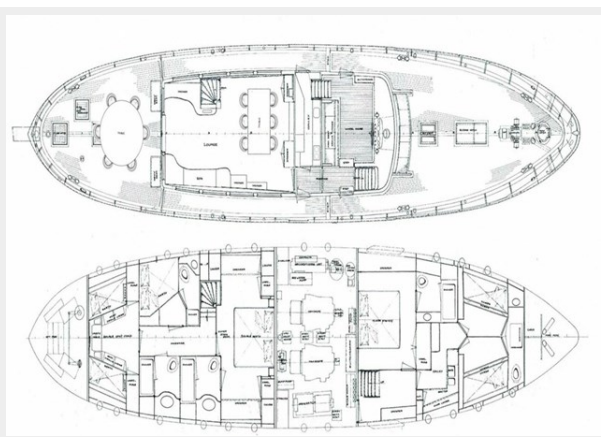
GALLEY



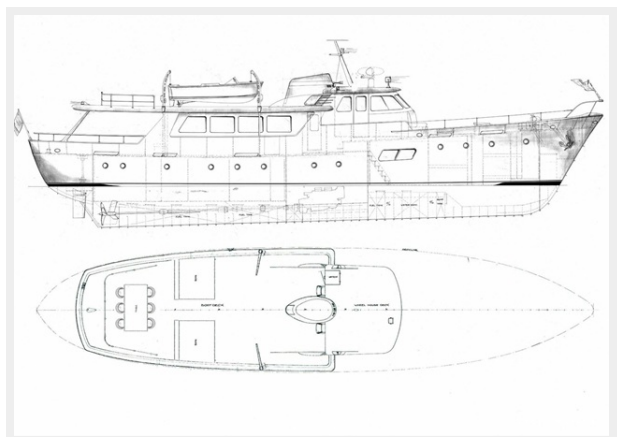
COCKPIT AREA



LAYOUT



LAYOUT



CONTACTS

Andrey Shestakov, leading yacht broker of the sales department of Shestakov Yacht Sales Inc. Shestakov Yacht Sales Inc., the official representative of the Miami/Fort Lauderdale FL headquarters.

Contact details

Email: andrey@shestakovyachtsales.com

Web: shestakovyachtsales.com/en/

Telephones

USA: +1(954)274-4435

Office hours

Monday – Saturday: **9:00 - 21:00** EDT

Sunday: **closed**

Address



Harbour Towne Marina, 850 NE 3rd St,
STE 213, Dania, FL 33004