

CRACKERJACK — KELSALL



Builder: KELSALL

Year Built: 1993

Model: Catamaran

Price: PRICE ON APPLICATION

Location: United States

LOA: 42' (12.8mm)

Beam: 24

Min Draft: 3' (0.91mm)

Max Draft: 3' (0.91mm)

Our experienced yacht broker, Andrey Shestakov, will help you choose and buy a yacht that best suits your needs **Crackerjack — KELSALL** from our catalogue. Presently, at Shestakov Yacht Sales Inc., we have a wide variety of yachts available on our sale's list. We also work in close contact with all the big yacht manufacturers from all over the world.

If you would like to buy a yacht **Crackerjack — KELSALL** or would like help answering any questions concerning purchasing, selling or chartering a yacht, please call **+1(954)274-4435**

TABLE OF CONTENTS

TABLE OF CONTENTS	2
SPECIFICATIONS	6
Overview	6
Basic Information	6
Dimensions	6
Speed, Capacities and Weight	6
Accommodations	6
Hull and Deck Information	6
Engine Information	6
PHOTOS	7
1_2800174_42_kelsall_starboard_forward_profile2	7
0_2800174_42_kelsall_starboard_forward_profile1	7
2_2800174_42_kelsall_overhead_profile1	7
3_2800174_42_kelsall_overhead_profile2	7
4_2800174_42_kelsall_overhead_profile3	7
5_2800174_42_kelsall_overhead_profile4	7
6_2800174_42_kelsall_underway1	7
7_2800174_42_kelsall_underway2	7
8_2800174_42_kelsall_at_anchor1	8
9_2800174_42_kelsall_at_anchor2	8
10_2800174_42_kelsall_port_aft_profile	8
11_2800174_42_kelsall_starboard_aft_profile	8
12_2800174_42_kelsall_aft_profile	8
13_2800174_42_kelsall_forward_roller_furler	8
15_2800174_42_kelsall_anchor_windlass	8
14_2800174_42_kelsall_anchor	8
16_2800174_42_kelsall_foredeck1	9
17_2800174_42_kelsall_foredeck2	9

18_2800174_42_kelsall_foredeck_aft	9
19_2800174_42_kelsall_foredeck_port	9
21_2800174_42_kelsall_mast_base	9
20_2800174_42_kelsall_foredeck_starboard	9
23_2800174_42_kelsall_rig	9
22_2800174_42_kelsall_cabin_top	9
24_2800174_42_kelsall_sails	10
25_2800174_42_kelsall_port_side_deck1	10
26_2800174_42_kelsall_port_side_deck2	10
27_2800174_42_kelsall_starboard_side_deck1	10
29_2800174_42_kelsall_cockpit_forward	10
28_2800174_42_kelsall_starboard_side_deck2	10
30_2800174_42_kelsall_cockpit_port	10
31_2800174_42_kelsall_cockpit_starboard	10
32_2800174_42_kelsall_helm1	11
33_2800174_42_kelsall_helm2	11
34_2800174_42_kelsall_helmseat	11
35_2800174_42_kelsall_bbq_grill	11
37_2800174_42_kelsall_tender_outboard	11
36_2800174_42_kelsall_tender	11
38_2800174_42_kelsall_tender_davits	11
39_2800174_42_kelsall_port_swimplatform	11
40_2800174_42_kelsall_starboard_swimplatform	12
41_2800174_42_kelsall_salon_forward	12
42_2800174_42_kelsall_salon_port	12
43_2800174_42_kelsall_salon_starboard	12
44_2800174_42_kelsall_salon_aft	12
45_2800174_42_kelsall_salon_seating	12
46_2800174_42_kelsall_nav_station	12

47_2800174_42_kelsall_galley	12
48_2800174_42_kelsall_galley_forward	13
49_2800174_42_kelsall_galley_aft	13
50_2800174_42_kelsall_galley_inboard	13
51_2800174_42_kelsall_galley_outboard	13
52_2800174_42_kelsall_port_forward_stateroom_forward	13
53_2800174_42_kelsall_port_forward_stateroom_aft	13
54_2800174_42_kelsall_port_forward_stateroom_inboard	13
55_2800174_42_kelsall_port_forward_stateroom_outboard	13
56_2800174_42_kelsall_port_forward_stateroom_head	14
57_2800174_42_kelsall_port_aft_stateroom	14
58_2800174_42_kelsall_starboard_companionway	14
59_2800174_42_kelsall_starboard_forward_stateroom_forward	14
60_2800174_42_kelsall_starboard_forward_stateroom_inboard	14
61_2800174_42_kelsall_starboard_forward_stateroom_outboard	14
62_2800174_42_kelsall_starboard_forepeak	15
63_2800174_42_kelsall_starboard_aft_stateroom	15
64_2800174_42_kelsall_starboard_head	15
65_2800174_42_kelsall_starboard_shower	15
66_2800174_42_kelsall_starboard_engine_compartment	15
67_2800174_42_kelsall_starboard_auxiliary	15
68_2800174_42_kelsall_starboard_racor_fuel_filter	15
69_2800174_42_kelsall_water_heater	15
70_2800174_42_kelsall_watermaker	16
71_2800174_42_kelsall_electrical_panel	16
72_2800174_42_kelsall_inverter_charger	16
73_2800174_42_kelsall_port_solar_panel	16
74_2800174_42_kelsall_starboard_solar_panel	16
75_2800174_42_kelsall_aft_solar_panels	16

76_2800174_42_kelsall_solar_panels_controllers1	16
77_2800174_42_kelsall_solar_panels_controllers2	16
CONTACTS	17
Contact details	17
Telephones	17
Office hours	17
Address	17

SPECIFICATIONS

Overview

Crackerjack is a 1993 42' Kelsall sail cat. She offers twin Vovlo-Penta 28 HP auxiliaries, Victron Energy 3,000 watt inverter, Webasto reverse cycle air conditioning/heating system, Rainman 37 gph watermaker, roller furler Jib, roller furler Staysail and a 4 stateroom 2 head layout. Crackerjack just returned from an extensive Caribbean cruise and is ready for her new owners to head back out and enjoy her like her present owners have. With her 58' mast, she is ICW friendly too. Crackerjack is setup very nicely for a large family, like the sellers, especially with the amount of refrigeration and her stainless steel rails for netting.

Basic Information

Category: Catamaran

Model Year: 1993

Year Built: 1993

Country: United States

Dimensions

LOA: 42' (12.8mm)

Beam: 24

Min Draft: 3' (0.91mm)

Max Draft: 3' (0.91mm)

Speed, Capacities and Weight

Water Capacity: 200 Gallons

Holding Tank: 30 Gal Gallons

Fuel Capacity: 140 Gal Gallons

Accommodations

Total Cabins: 4

Total Heads: 2

Hull and Deck Information

Hull Material: Fiberglass

Engine Information

Engines: 2

Manufacturer: Volvo Penta

Engine Type: Inboard

Fuel Type: Diesel

PHOTOS

0_2800174_42_kelsall_starboard_forward_profile1



1_2800174_42_kelsall_starboard_forward_profile2



2_2800174_42_kelsall_overhead_profile1



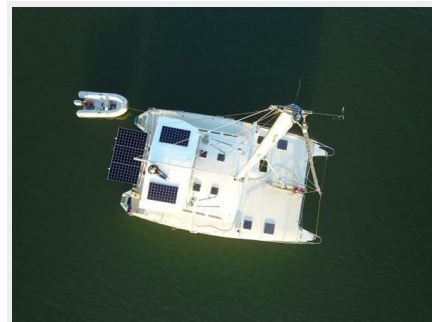
3_2800174_42_kelsall_overhead_profile2



4_2800174_42_kelsall_overhead_profile3



5_2800174_42_kelsall_overhead_profile4



6_2800174_42_kelsall_underway1



7_2800174_42_kelsall_underway2



8_2800174_42_kelsall_at_anchor1



9_2800174_42_kelsall_at_anchor2



10_2800174_42_kelsall_port_aft_profile



11_2800174_42_kelsall_starboard_aft_profile



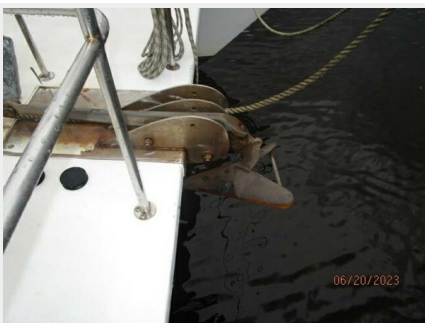
12_2800174_42_kelsall_aft_profile



13_2800174_42_kelsall_forward_roller_furler



14_2800174_42_kelsall_anchor



15_2800174_42_kelsall_anchor_windlass



16_2800174_42_kelsall_foredeck1



17_2800174_42_kelsall_foredeck2



18_2800174_42_kelsall_foredeck_aft



19_2800174_42_kelsall_foredeck_port



20_2800174_42_kelsall_foredeck_starboard



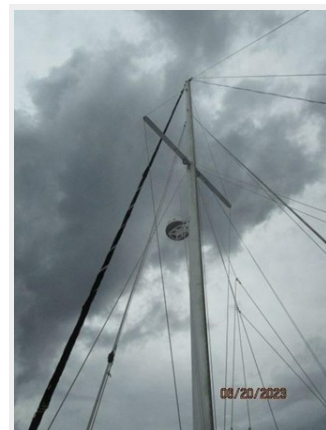
21_2800174_42_kelsall_mast_base



22_2800174_42_kelsall_cabin_top



23_2800174_42_kelsall_rig



24_2800174_42_kelsall_sails



25_2800174_42_kelsall_port_side_deck1



26_2800174_42_kelsall_port_side_deck2



27_2800174_42_kelsall_starboard_side_deck1



28_2800174_42_kelsall_starboard_side_deck2



29_2800174_42_kelsall_cockpit_forward



30_2800174_42_kelsall_cockpit_port



31_2800174_42_kelsall_cockpit_starboard



32_2800174_42_kelsall_helm1



33_2800174_42_kelsall_helm2



34_2800174_42_kelsall_helmseat



35_2800174_42_kelsall_bbq_grill



36_2800174_42_kelsall_tender



37_2800174_42_kelsall_tender_outboard



38_2800174_42_kelsall_tender_davits



39_2800174_42_kelsall_port_swimplatform



40_2800174_42_kelsall_starboard_swimplatform



41_2800174_42_kelsall_salon_forward



42_2800174_42_kelsall_salon_port



43_2800174_42_kelsall_salon_starboard



44_2800174_42_kelsall_salon_aft



45_2800174_42_kelsall_salon_seating



46_2800174_42_kelsall_nav_station



47_2800174_42_kelsall_galley



48_2800174_42_kelsall_galley_forward



49_2800174_42_kelsall_galley_aft



50_2800174_42_kelsall_galley_inboard



51_2800174_42_kelsall_galley_outboard



52_2800174_42_kelsall_port_forward_stateroom_forward



53_2800174_42_kelsall_port_forward_stateroom_aft



54_2800174_42_kelsall_port_forward_stateroom_inboard



55_2800174_42_kelsall_port_forward_stateroom_outboard



56_2800174_42_kelsall_port_forward_stateroom_head



57_2800174_42_kelsall_port_aft_stateroom



58_2800174_42_kelsall_starboard_companionway



59_2800174_42_kelsall_starboard_forward_stateroom_forward



60_2800174_42_kelsall_starboard_forward_stateroom_inboard 61_2800174_42_kelsall_starboard_forward_stateroom_outboard



62_2800174_42_kelsall_starboard_forepeak



63_2800174_42_kelsall_starboard_aft_stateroom



64_2800174_42_kelsall_starboard_head



65_2800174_42_kelsall_starboard_shower



66_2800174_42_kelsall_starboard_engine_compartment



67_2800174_42_kelsall_starboard_auxiliary



68_2800174_42_kelsall_starboard_racor_fuel_filter



69_2800174_42_kelsall_water_heater



70_2800174_42_kelsall_watermaker



71_2800174_42_kelsall_electrical_panel



72_2800174_42_kelsall_inverter_charger



73_2800174_42_kelsall_port_solar_panel



74_2800174_42_kelsall_starboard_solar_panel



75_2800174_42_kelsall_aft_solar_panels



76_2800174_42_kelsall_solar_panels_controllers1



77_2800174_42_kelsall_solar_panels_controllers2



CONTACTS

Andrey Shestakov, leading yacht broker of the sales department of Shestakov Yacht Sales Inc. Shestakov Yacht Sales Inc., the official representative of the Miami/Fort Lauderdale FL headquarters.

Contact details

Email:
andrey@shestakovyachtsales.com

Web: shestakovyachtsales.com/en/

Telephones

USA: +1(954)274-4435

Office hours

Monday – Saturday: 9:00 - 21:00 EDT

Sunday: **closed**

Address



Harbour Towne Marina, 850 NE 3rd St,
STE 213, Dania, FL 33004