

## LOU LOU — TIARA



**Builder:** TIARA

**Year Built:** 2007

**Model:** cruiser

**Price:** \$374,900 USD

**Location:** United States

**LOA:** 43' (13.11mm)

**Beam:** 14.75

**Max Draft:** 3' 7" (1.09mm)

Our experienced yacht broker, Andrey Shestakov, will help you choose and buy a yacht that best suits your needs **Lou Lou — TIARA** from our catalogue. Presently, at Shestakov Yacht Sales Inc., we have a wide variety of yachts available on our sale's list. We also work in close contact with all the big yacht manufacturers from all over the world.

If you would like to buy a yacht **Lou Lou — TIARA** or would like help answering any questions concerning purchasing, selling or chartering a yacht, please call **+1(954)274-4435**

# TABLE OF CONTENTS

---

TABLE OF CONTENTS	2
SPECIFICATIONS	5
Overview	5
Basic Information	6
Dimensions	6
Speed, Capacities and Weight	7
Accommodations	7
Hull and Deck Information	7
Engine Information	7
PHOTOS	8
8913725_20230619124324123_1_XLARGE	8
132645_0_070320092114_2	8
8913725_20230619124328435_1_XLARGE	8
8913725_20230619124325656_1_XLARGE	8
8913725_20230619124331528_1_XLARGE	8
8913725_20230619124411305_1_XLARGE	8
8913725_20230619124334766_1_XLARGE	9
8913725_20230619124349894_1_XLARGE	9
8913725_20230619124337827_1_XLARGE	9
8913725_20230619124340925_1_XLARGE	9
8913725_20230619124352923_1_XLARGE	9
8913725_20230619124356009_1_XLARGE	9
8913725_20230619124343822_1_XLARGE	10
8913725_20230619124405227_1_XLARGE	10
8913725_20230619124408263_1_XLARGE	10
8913725_20230619124435514_1_XLARGE	10
8913725_20230619124424472_1_XLARGE	10
8913725_20230619124431456_1_XLARGE	10

---

8913725_20230619124414273_1_XLARGE	11
8913725_20230619124433501_1_XLARGE	11
8913725_20230619124421352_1_XLARGE	11
8913725_20230619124429431_1_XLARGE	11
8913725_20230619124447730_1_XLARGE	11
8913725_20230619124437573_1_XLARGE	11
8913725_20230619124441664_1_XLARGE	12
8913725_20230619124444694_1_XLARGE	12
8913725_20230619124453900_1_XLARGE	12
8913725_20230619124502861_1_XLARGE	12
8913725_20230619124450700_1_XLARGE	12
8913725_20230619124456759_1_XLARGE	12
8913725_20230619124504892_1_XLARGE	13
8913725_20230619124458934_1_XLARGE	13
8913725_20230619124506933_1_XLARGE	13
8913725_20230619124510998_1_XLARGE	13
8913725_20230619124517139_1_XLARGE	14
8913725_20230619124508958_1_XLARGE	14
8913725_20230619124513072_1_XLARGE	14
8913725_20230619124520169_1_XLARGE	14
8913725_20230619124523193_1_XLARGE	14
8913725_20230619124526294_1_XLARGE	14
8913725_20230619124532332_1_XLARGE	15
8913725_20230619124529336_1_XLARGE	15
8913725_20230619124538414_1_XLARGE	15
8913725_20230619124545485_1_XLARGE	15
8913725_20230619124540413_1_XLARGE	16
8913725_20230619124402091_1_XLARGE	16
8913725_20230619124623786_1_XLARGE	16

---

---

8913725_20230619124627741_1_XLARGE	16
8913725_20230619124630783_1_XLARGE	16
8913725_20230619124633782_1_XLARGE	16
8913725_20230619124547545_1_XLARGE	17
8913725_20230619124602669_1_XLARGE	17
8913725_20230619124614718_1_XLARGE	17
8913725_20230619124549454_1_XLARGE	17
8913725_20230619124605701_1_XLARGE	17
8913725_20230619124551500_1_XLARGE	17
8913725_20230619124553478_1_XLARGE	18
8913725_20230619124555687_1_XLARGE	18
8913725_20230619124611715_1_XLARGE	18
8913725_20230619124557623_1_XLARGE	18
8913725_20230619124600622_1_XLARGE	18
8913725_20230619124608659_1_XLARGE	18
8913725_20230619124636540_1_XLARGE	19
8913725_20230619124642771_1_XLARGE	19
CONTACTS	20
Contact details	20
Telephones	20
Office hours	20
Address	20

---

# SPECIFICATIONS

---

## Overview

---

If you are seeking the PERFECT Tiara Sovran 4300 then look no further! This boat is a 9.9 out of 10!!

Kept in fresh water in Michigan up until November 2022 when the boat was relocated by its current owner to Florida. When you first view this vessel you will be struck by the perfect gelcoat and shine on her beautiful flag blue hull, perfectly accenting her white top sides.

As you enter the boat you will see updated canvas, as you access the cockpit area you begin to truly appreciate the pristine condition of this vessel, all cushions have been recovered without a single mark on them, the wet bar area invites one to sit down in one of the two lounge area and enjoy a cold beverage from the refrigerator while feeling the cool breeze of the cockpit AC system on your skin. The Onan 11.5 KW generator provides plenty of "shore power" when you are travelling or anchored out.

In the helm seat you will again be impressed by the updated Raymarine electronics suite, including three Axiom Pro MFD's, 48 mile digital radar, auto pilot, etc. Navigating as you leave and arrive at your destination is made simple with the joystick controlling the twin Volvo pods, making any Captain into a professional mariner!

As you proceed down the generous sliding door and down several steps you emerge into a beautiful, fully appointed salon/galley area. All the floors, walls and ceiling areas are in perfect shape and again, show the pride in ownership the current owner has in his vessel. The simple fact he is an Automotive Engineer with a prestigious German brand would not allow him to maintain this boat in any other fashion.

This area allows the onboard chef to create meals and/or snacks to meet the needs of the passengers with the use of the full size refrigerator, generous counter areas, large sink, etc. Meals can be taken in the cockpit area or in the salon at the beautiful dinette. Entertainment can also be supplied with a smart flat screen TV, connected to the KVH satellite TV system, and the Bose surround sound system.

Forward of the salon, through a door, takes you to the large master stateroom complete with ensuite head area with separate shower area. You will also note that this vessel is accessorized with custom "Tiara" soft goods. This stateroom also has a separate AC system with its own controls for personal comfort as well as another smart flat screen TV. This stateroom is also bright and airy due to the multiple hatches in both the ceiling and hull areas.

Aft of the port side galley area you will pass through another door to access the guest stateroom. This area also has an ensuite head with shower. Sleeping arrangements are two twin beds that can also be moved together to create a single large sleeping surface. Personal comfort is maintained through yet another independent AC/Heating system. Again, this cabin is finished

tastefully with Tiara soft goods.

To create a special ambiance while at anchor or at the dock, just switch on the underwater lights to set the mood and also allow viewing of the many fish species that are attracted to lights at night.

This vessel has been fully maintained to Tiara/Volvo maintenance guidelines using ONLY Certified Volvo Marine service providers. Below is a short list of recent maintenance/upgrades performed to Lou Lou.

- 2023 Oil, filters, Racor fuel filters changed/serviced.
- 2023 new fenders and mooring lines.
- 2022 Volvo pods serviced/aligned new zincs installed.
- 2022 Awlgrip hull paint touched up.
- 2022 new house batteries.
- 2021 new house water pump.
- 2021 new Raymarine VHF radio.
- 2020 new stainless steel anchor
- All cockpit upholstery replaced.
- New EPIRB
- 2019 new Raymarine Axiom Pro MDF's installed (three).
- 2019 New AC units in salon and aft cabin (both condensing units and air handlers).
- 2019 New stainless steel anchor mast and lights.
- 2018 new underwater lights.
- 2018 starboard IPS unit rebuilt.
- 2018 new battery charger.
- 2018 new sea strainers with transparent tops.
- ETC.....

## Basic Information

---

**Category:** cruiser

**Sub Category:** Express

**Model Year:** 2007

**Year Built:** 2007

**Country:** United States

## Dimensions

---

**LOA:** 43' (13.11mm)

**Beam:** 14.75

**Max Draft:** 3' 7" (1.09mm)

---

## Speed, Capacities and Weight

---

**Water Capacity:** 110 Gallons

**Holding Tank:** 50 Gal Gallons

**Fuel Capacity:** 375 Gal Gallons

---

## Accommodations

---

**Total Cabins:** 2

---

## Hull and Deck Information

---

**Hull Material:** Fiberglass

---

## Engine Information

---

**Engines:** 2

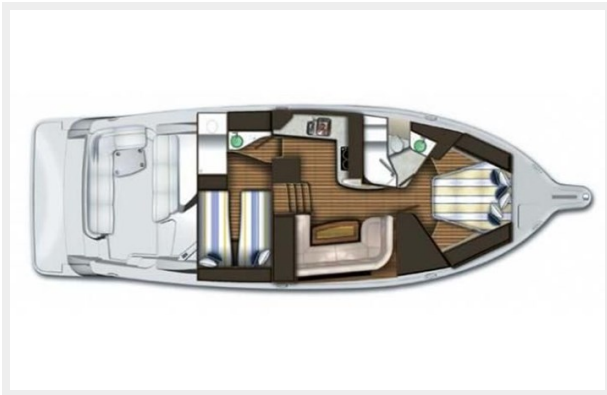
**Manufacturer:** Volvo Penta

**Engine Type:** Inboard

**Fuel Type:** Diesel

# PHOTOS

132645\_0\_070320092114\_2



8913725\_20230619124324123\_1\_XLARGE



8913725\_20230619124325656\_1\_XLARGE



8913725\_20230619124328435\_1\_XLARGE



8913725\_20230619124331528\_1\_XLARGE



8913725\_20230619124411305\_1\_XLARGE





8913725\_20230619124334766\_1\_XLARGE



8913725\_20230619124349894\_1\_XLARGE



8913725\_20230619124337827\_1\_XLARGE



8913725\_20230619124340925\_1\_XLARGE



8913725\_20230619124352923\_1\_XLARGE



8913725\_20230619124356009\_1\_XLARGE



8913725\_20230619124343822\_1\_XLARGE



8913725\_20230619124405227\_1\_XLARGE



8913725\_20230619124408263\_1\_XLARGE



8913725\_20230619124435514\_1\_XLARGE



8913725\_20230619124424472\_1\_XLARGE



8913725\_20230619124431456\_1\_XLARGE



8913725\_20230619124414273\_1\_XLARGE



8913725\_20230619124433501\_1\_XLARGE



8913725\_20230619124421352\_1\_XLARGE



8913725\_20230619124429431\_1\_XLARGE



8913725\_20230619124447730\_1\_XLARGE



8913725\_20230619124437573\_1\_XLARGE



8913725\_20230619124441664\_1\_XLARGE



8913725\_20230619124444694\_1\_XLARGE



8913725\_20230619124453900\_1\_XLARGE



8913725\_20230619124502861\_1\_XLARGE



8913725\_20230619124450700\_1\_XLARGE



8913725\_20230619124456759\_1\_XLARGE



8913725\_20230619124504892\_1\_XLARGE

8913725\_20230619124458934\_1\_XLARGE



8913725\_20230619124506933\_1\_XLARGE



8913725\_20230619124510998\_1\_XLARGE



8913725\_20230619124517139\_1\_XLARGE



8913725\_20230619124508958\_1\_XLARGE



8913725\_20230619124513072\_1\_XLARGE



8913725\_20230619124520169\_1\_XLARGE



8913725\_20230619124523193\_1\_XLARGE

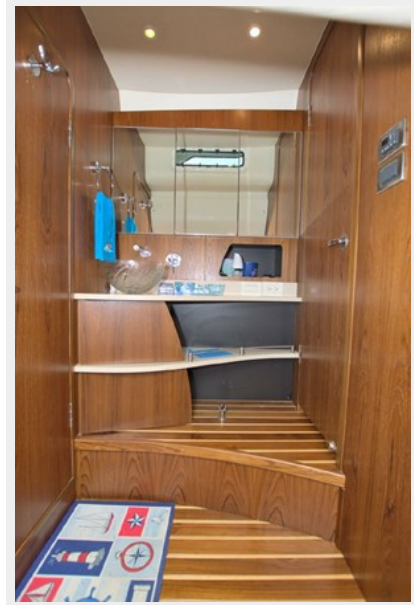


8913725\_20230619124526294\_1\_XLARGE



8913725\_20230619124532332\_1\_XLARGE

8913725\_20230619124529336\_1\_XLARGE



8913725\_20230619124538414\_1\_XLARGE

8913725\_20230619124545485\_1\_XLARGE



8913725\_20230619124540413\_1\_XLARGE



8913725\_20230619124402091\_1\_XLARGE



8913725\_20230619124623786\_1\_XLARGE



8913725\_20230619124627741\_1\_XLARGE



8913725\_20230619124630783\_1\_XLARGE



8913725\_20230619124633782\_1\_XLARGE





8913725\_20230619124547545\_1\_XLARGE



8913725\_20230619124602669\_1\_XLARGE



8913725\_20230619124614718\_1\_XLARGE



8913725\_20230619124549454\_1\_XLARGE



8913725\_20230619124605701\_1\_XLARGE



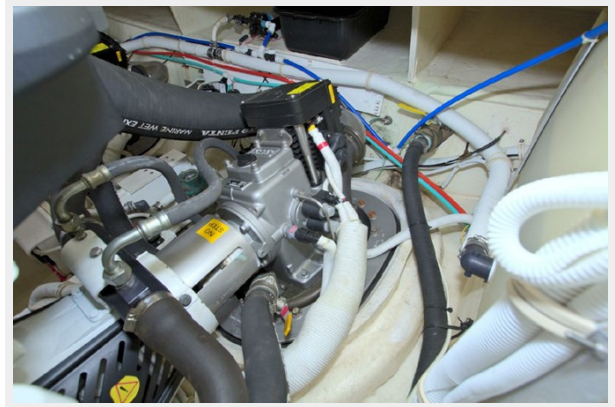
8913725\_20230619124551500\_1\_XLARGE



8913725\_20230619124553478\_1\_XLARGE



8913725\_20230619124555687\_1\_XLARGE



8913725\_20230619124611715\_1\_XLARGE



8913725\_20230619124557623\_1\_XLARGE



8913725\_20230619124600622\_1\_XLARGE



8913725\_20230619124608659\_1\_XLARGE



8913725\_20230619124636540\_1\_XLARGE



8913725\_20230619124642771\_1\_XLARGE



# CONTACTS

---

Andrey Shestakov, leading yacht broker of the sales department of Shestakov Yacht Sales Inc. Shestakov Yacht Sales Inc., the official representative of the Miami/Fort Lauderdale FL headquarters.

## Contact details

---

Email: [andrey@shestakovyachtsales.com](mailto:andrey@shestakovyachtsales.com)

Web: [shestakovyachtsales.com/en/](http://shestakovyachtsales.com/en/)

## Telephones

---

USA: +1(954)274-4435

## Office hours

---

Monday – Saturday: **9:00 - 21:00** EDT

Sunday: **closed**

## Address

---



Harbour Towne Marina, 850 NE 3rd St,  
STE 213, Dania, FL 33004