

SENECA — CRUISERS YACHTS



Builder: CRUISERS YACHTS

Year Built: 2004

Model: cruiser

Price: PRICE ON APPLICATION

Location: United States

LOA: 37' (11.28mm)

Beam: 13

Max Draft: 3' (0.91mm)

Our experienced yacht broker, Andrey Shestakov, will help you choose and buy a yacht that best suits your needs **SENECA — CRUISERS YACHTS** from our catalogue. Presently, at Shestakov Yacht Sales Inc., we have a wide variety of yachts available on our sale's list. We also work in close contact with all the big yacht manufacturers from all over the world.

If you would like to buy a yacht **SENECA — CRUISERS YACHTS** or would like help answering any questions concerning purchasing, selling or chartering a yacht, please call **+1(954)274-4435**

TABLE OF CONTENTS

TABLE OF CONTENTS	2
SPECIFICATIONS	5
Overview	5
Basic Information	5
Dimensions	6
Speed, Capacities and Weight	6
Accommodations	6
Hull and Deck Information	6
Engine Information	6
PHOTOS	7
8922860_20230630115114032_1_XLARGE	7
8922860_20230630115112012_1_XLARGE	7
8922860_20230630115110002_1_XLARGE	7
8922860_20230630115107977_1_XLARGE	7
8922860_20230630115047719_1_XLARGE	7
8922860_20230630115045711_1_XLARGE	7
8922860_20230630115053785_1_XLARGE	8
8922860_20230630115051798_1_XLARGE	8
8922860_20230630115059868_1_XLARGE	8
8922860_20230630115103988_1_XLARGE	8
8922860_20230630115105935_1_XLARGE	8
8922860_20230630115126179_1_XLARGE	8
8922860_20230630115124079_1_XLARGE	9
8922860_20230630115116015_1_XLARGE	9
8922860_20230630115118011_1_XLARGE	9
8922860_20230630115120192_1_XLARGE	9
8922860_20230630115122031_1_XLARGE	9
8922860_20230630115055753_1_XLARGE	9

8922860_20230630115049729_1_XLARGE	10
8922860_20230630115057817_1_XLARGE	10
8922860_20230630115205525_1_XLARGE	10
8922860_20230630115141384_1_XLARGE	10
8922860_20230630115159522_1_XLARGE	11
8922860_20230630115203468_1_XLARGE	11
8922860_20230630115201632_1_XLARGE	11
8922860_20230630115147350_1_XLARGE	11
8922860_20230630115149264_1_XLARGE	12
8922860_20230630115151444_1_XLARGE	12
8922860_20230630115153452_1_XLARGE	12
8922860_20230630115157564_1_XLARGE	12
8922860_20230630115155428_1_XLARGE	12
8922860_20230630115145348_1_XLARGE	12
8922860_20230630115139278_1_XLARGE	13
8922860_20230630115137271_1_XLARGE	13
8922860_20230630115133179_1_XLARGE	13
8922860_20230630115127537_1_XLARGE	13
8922860_20230630115129136_1_XLARGE	13
8922860_20230630115131186_1_XLARGE	13
8922860_20230630115213625_1_XLARGE	14
8922860_20230630115211520_1_XLARGE	14
8922860_20230630115215539_1_XLARGE	14
8922860_20230630115217543_1_XLARGE	14
8922860_20230630115219577_1_XLARGE	14
8922860_20230630115209502_1_XLARGE	14
8922860_20230630115223603_1_XLARGE	15
8922860_20230630115221674_1_XLARGE	15
8922860_20230630115246915_1_XLARGE	15

8922860_20230630115244810_1_XLARGE	15
8922860_20230630115233725_1_XLARGE	15
8922860_20230630115242764_1_XLARGE	15
8922860_20230630115238943_1_XLARGE	16
8922860_20230630115235789_1_XLARGE	16
8922860_20230630115240783_1_XLARGE	16
8922860_20230630115229822_1_XLARGE	16
8922860_20230630115225720_1_XLARGE	16
8922860_20230630115227676_1_XLARGE	16
8922860_20230630115231706_1_XLARGE	17
CONTACTS	18
Contact details	18
Telephones	18
Office hours	18
Address	18

SPECIFICATIONS

Overview

A full package cruiser, everything you need to go anywhere. This boat includes a dinghy for exploring.

Why: Shallow 33" draft, bridge clearance 13', Fast if needed to get across a great lake or sound. Easy to handle, safe to get to the bow for handling lines. Yanmar 6LP Diesel motors with 1124hrs., Easy dinghy loading & loading. New Phasor 7.5KW Generator with 125hrs.

New Items:

New color coordinated Sea Deck, Complete canvas with Strataglass (upgrade from Isinglass), Matching covers for all Strataglass, with screen inserts, New cockpit upholstery with updated foam. New Electronics (Simrad 12" Chart plotter), Halo 20+ HD 36-mile radar, 2 new transducers (1 for Simrad, 1 for in dash depth gauge) double readings, new VHF & Antenna, New Phasor Genset with 125hrs, remote information panel. Dripless shaft seals. Bottom Paint, Zincs, 80' of chain, 200' of rode. Hurley H3O Davit System, 2021 9.9hp Mercury dinghy motor, with Caribe RIB(Dinghy trailer included). New foam for entire interior (couch, settee, berth), hot water heater, 2 Smart TV's, XM interface to stereo, bilge pumps, shower & A/C sump pump systems. New expansion water tank and pump. Faucets for both interior sinks, extra insulation for refrigeration. TV antenna, all LED lighting, blue cockpit LED lights. New Cutlass bearings, new batteries.

Carib 10' dinghy included, with trailer. Maintenance records with receipts. New cutlass bearings, New Starboard Fuel tank. Boat has been in heated dry storage at Winter Harbor for the winter, has never seen cold weather. Bottom paint is in excellent condition. Spare parts for most systems on board. Great Loop Boat. Has been in the great lakes for the past 3 years. All charts and tools included; SENECA is a complete boat ready to go.

SENECA is currently heading east on the Erie Canal and will be going down the Hudson to NYC, then to Atlantic City NJ, Cape May NJ, Delaware City, Baltimore MD.

Basic Information

Category: cruiser

Sub Category: Express

Model Year: 2004

Year Built: 2004

Country: United States

Dimensions

LOA: 37' (11.28mm)

Beam: 13

Max Draft: 3' (0.91mm)

Speed, Capacities and Weight

Gross Tonnage: 18000 Pounds

Water Capacity: 270 Gallons

Holding Tank: 55 Gal Gallons

Fuel Capacity: 300 Gal Gallons

Accommodations

Total Cabins: 2

Hull and Deck Information

Hull Material: Fiberglass

Engine Information

Engines: 2

Manufacturer: Yanmar

Engine Type: Inboard

Fuel Type: Diesel

PHOTOS

8922860_20230630115114032_1_XLARGE



8922860_20230630115112012_1_XLARGE



8922860_20230630115110002_1_XLARGE



8922860_20230630115107977_1_XLARGE



8922860_20230630115047719_1_XLARGE



8922860_20230630115045711_1_XLARGE



8922860_20230630115053785_1_XLARGE



8922860_20230630115051798_1_XLARGE



8922860_20230630115059868_1_XLARGE



8922860_20230630115103988_1_XLARGE



8922860_20230630115105935_1_XLARGE



8922860_20230630115126179_1_XLARGE



8922860_20230630115124079_1_XLARGE



8922860_20230630115116015_1_XLARGE



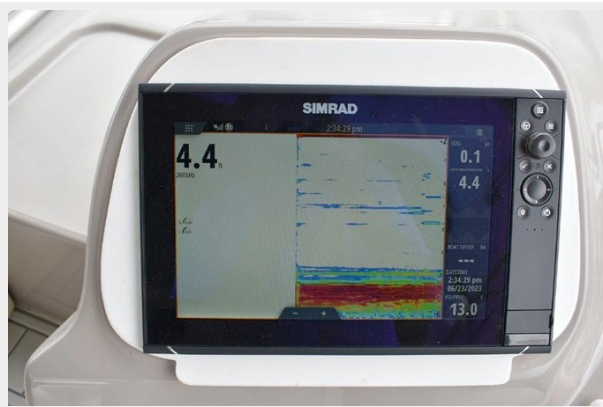
8922860_20230630115118011_1_XLARGE



8922860_20230630115120192_1_XLARGE



8922860_20230630115122031_1_XLARGE



8922860_20230630115055753_1_XLARGE



8922860_20230630115049729_1_XLARGE



8922860_20230630115057817_1_XLARGE



8922860_20230630115205525_1_XLARGE



8922860_20230630115141384_1_XLARGE



8922860_20230630115159522_1_XLARGE

8922860_20230630115203468_1_XLARGE



8922860_20230630115201632_1_XLARGE



8922860_20230630115147350_1_XLARGE



8922860_20230630115149264_1_XLARGE



8922860_20230630115151444_1_XLARGE



8922860_20230630115153452_1_XLARGE



8922860_20230630115157564_1_XLARGE



8922860_20230630115155428_1_XLARGE



8922860_20230630115145348_1_XLARGE



8922860_20230630115139278_1_XLARGE



8922860_20230630115137271_1_XLARGE



8922860_20230630115133179_1_XLARGE



8922860_20230630115127537_1_XLARGE



8922860_20230630115129136_1_XLARGE



8922860_20230630115131186_1_XLARGE



8922860_20230630115213625_1_XLARGE



8922860_20230630115211520_1_XLARGE



8922860_20230630115215539_1_XLARGE



8922860_20230630115217543_1_XLARGE



8922860_20230630115219577_1_XLARGE



8922860_20230630115209502_1_XLARGE



8922860_20230630115223603_1_XLARGE



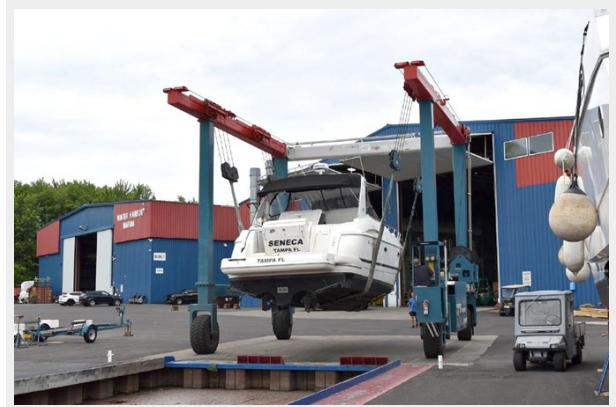
8922860_20230630115221674_1_XLARGE



8922860_20230630115246915_1_XLARGE



8922860_20230630115244810_1_XLARGE



8922860_20230630115233725_1_XLARGE



8922860_20230630115242764_1_XLARGE



8922860_20230630115238943_1_XLARGE



8922860_20230630115235789_1_XLARGE



8922860_20230630115240783_1_XLARGE



8922860_20230630115229822_1_XLARGE



8922860_20230630115225720_1_XLARGE



8922860_20230630115227676_1_XLARGE



8922860_20230630115231706_1_XLARGE



CONTACTS

Andrey Shestakov, leading yacht broker of the sales department of Shestakov Yacht Sales Inc. Shestakov Yacht Sales Inc., the official representative of the Miami/Fort Lauderdale FL headquarters.

Contact details

Email: andrey@shestakovyachtsales.com

Web: shestakovyachtsales.com/en/

Telephones

USA: +1(954)274-4435

Office hours

Monday – Saturday: **9:00 - 21:00** EDT

Sunday: **closed**

Address



Harbour Towne Marina, 850 NE 3rd St,
STE 213, Dania, FL 33004