

SOLID — CUSTOM BUILT



Builder: CUSTOM BUILT

Year Built: 1940

Model: trawler

Price: PRICE ON APPLICATION

Location: France

LOA: 55' 10" (17mm)

Beam: 13.12

Max Draft: 5' 7" (1.7mm)

Cruise Speed: 7.5 Knots Kts. (9 MPH)

Max Speed: 26 Knots Kts. (30 MPH)

Our experienced yacht broker, Andrey Shestakov, will help you choose and buy a yacht that best suits your needs **SOLID — CUSTOM BUILT** from our catalogue. Presently, at Shestakov Yacht Sales Inc., we have a wide variety of yachts available on our sale's list. We also work in close contact with all the big yacht manufacturers from all over the world.

If you would like to buy a yacht **SOLID — CUSTOM BUILT** or would like help answering any questions concerning purchasing, selling or chartering a yacht, please call **+1(954)274-4435**

TABLE OF CONTENTS

TABLE OF CONTENTS	2
SPECIFICATIONS	4
Overview	4
Basic Information	4
Dimensions	4
Speed, Capacities and Weight	4
Accommodations	4
Hull and Deck Information	5
Engine Information	5
PHOTOS	6
Tug boat - SOLID 2	6
Tug boat - SOLID 3	6
Tug boat - SOLID 4	6
Tug boat - SOLID 5	6
Tug boat - SOLID 6	6
Tug boat - SOLID 7	6
Tug boat - SOLID 8	7
Tug boat - SOLID 9	7
Tug boat - SOLID 10	7
Tug boat - SOLID 11	7
Tug boat - SOLID 12	7
Tug boat - SOLID 13	7
Tug boat - SOLID 15	8
Tug boat - SOLID 14	8
Tug boat - SOLID 16	8
Tug boat - SOLID 17	8
Tug boat - SOLID 18	8
Tug boat - SOLID 19	8

Tug boat - SOLID 20	9
Tug boat - SOLID 22	9
Tug boat - SOLID 23	9
Tug boat - SOLID 24	9
Tug boat - SOLID 25	9
Tug boat - SOLID 30	9
Tug boat - SOLID 31	10
Tug boat - SOLID 32	10
Tug boat - SOLID 33	10
Tug boat - SOLID 34	10
Tug boat - SOLID 35	10
Tug boat - SOLID 36	10
Tug boat - SOLID 37	11
Tug boat - SOLID 38	11
Tug boat - SOLID 39	11
Tug boat - SOLID 40	11
Tug boat - SOLID 41	11
Tug boat - SOLID 42	11
Tug boat - SOLID 43	12
Tug boat - SOLID 44	12
Tug boat - SOLID 45	12
CONTACTS	13
Contact details	13
Telephones	13
Office hours	13
Address	13

SPECIFICATIONS

Overview

If you are a passionate about historic tug boats that are a good base for your dream project, this can be the right one for you. Arnaud already invested lots of time and money to have everything working well, and as a captain he also has the experience to understand how to do it well. Now you can either continue as it is or build more of your ideas on top.

- 1940 boat was built Tug boat in Rotterdam Port until 1961 steam powered
- 1961 bought by Rotterdam Police, changed engine to diesel one which is still the current one was police boat
- 2000 bought by individual guy for private use and put into Port Museum of Rotterdam
- 2017 Arnaud bought it from Rotterdam, shipped it to Nice, refit done for 8 months

Basic Information

Category: trawler

Sub Category: Tug

Model Year: 1940

Year Built: 1940

Country: France

Dimensions

LOA: 55' 10" (17mm)

Beam: 13.12

Max Draft: 5' 7" (1.7mm)

Speed, Capacities and Weight

Cruise Speed: 7.5 Knots Kts. (9 MPH)

Max Speed: 26 Knots Kts. (30 MPH)

Fuel Consumption: 3.96 Gal Gallons

Accommodations

Total Cabins: 1

Sleeps: 3

Hull and Deck Information

Hull Material: Steel

Hull Designer: JH van Eyk en Zonen –
Sliedrecht

Exterior Designer: JH van Eyk en Zonen –
Sliedrecht

Engine Information

Engines: 1

Manufacturer: Fiat

Engine Type: Inboard

Fuel Type: Diesel

PHOTOS

Tug boat - SOLID 2



Tug boat - SOLID 3



Tug boat - SOLID 4



Tug boat - SOLID 5



Tug boat - SOLID 6



Tug boat - SOLID 7



Tug boat - SOLID 8



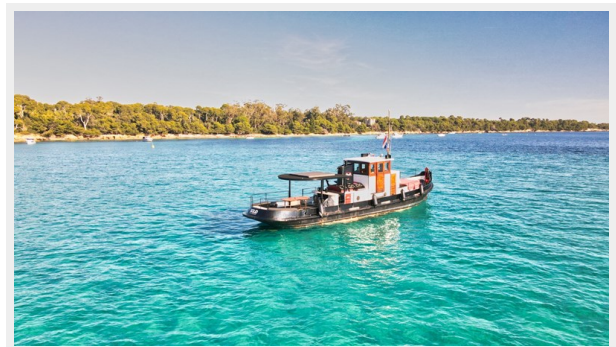
Tug boat - SOLID 9



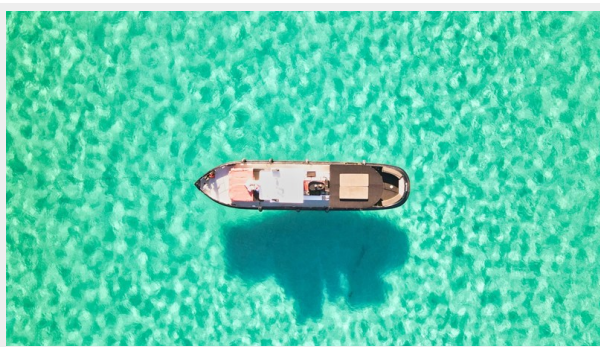
Tug boat - SOLID 10



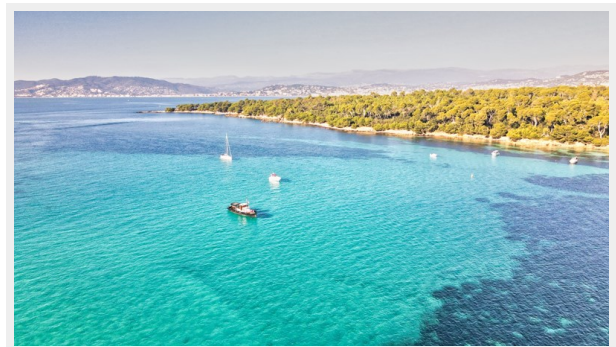
Tug boat - SOLID 11



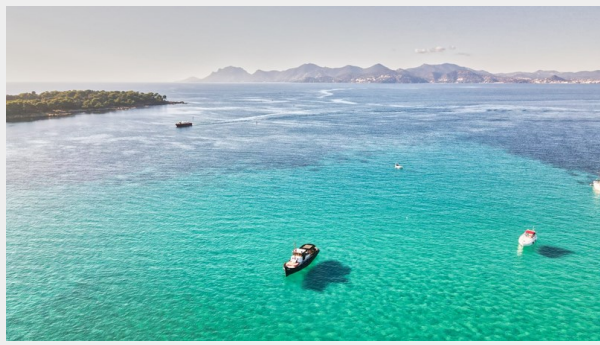
Tug boat - SOLID 12



Tug boat - SOLID 13



Tug boat - SOLID 14



Tug boat - SOLID 15



Tug boat - SOLID 16



Tug boat - SOLID 17



Tug boat - SOLID 18



Tug boat - SOLID 19



Tug boat - SOLID 20



Tug boat - SOLID 22



Tug boat - SOLID 23



Tug boat - SOLID 24



Tug boat - SOLID 25



Tug boat - SOLID 30



Tug boat - SOLID 31



Tug boat - SOLID 32



Tug boat - SOLID 33



Tug boat - SOLID 34



Tug boat - SOLID 35



Tug boat - SOLID 36



Tug boat - SOLID 37



Tug boat - SOLID 38



Tug boat - SOLID 39



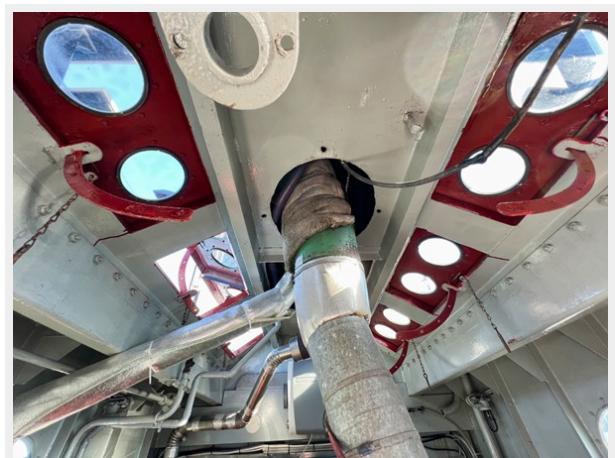
Tug boat - SOLID 40



Tug boat - SOLID 41



Tug boat - SOLID 42



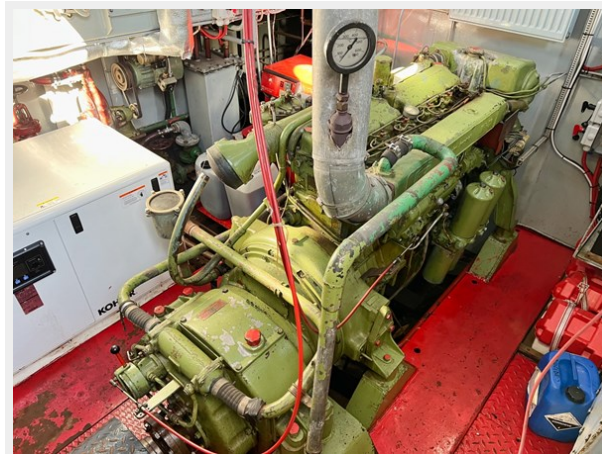
Tug boat - SOLID 43



Tug boat - SOLID 44



Tug boat - SOLID 45



CONTACTS

Andrey Shestakov, leading yacht broker of the sales department of Shestakov Yacht Sales Inc. Shestakov Yacht Sales Inc., the official representative of the Miami/Fort Lauderdale FL headquarters.

Contact details

Email: andrey@shestakovyachtsales.com

Web: shestakovyachtsales.com/en/

Telephones

USA: +1(954)274-4435

Office hours

Monday – Saturday: **9:00 - 21:00** EDT

Sunday: **closed**

Address



Harbour Towne Marina, 850 NE 3rd St,
STE 213, Dania, FL 33004