

ANNA MAY — WAUQUIEZ



Builder: WAUQUIEZ

Year Built: 1986

Model: Sloop

Price: PRICE ON APPLICATION

Location: United States

LOA: 38' (11.58mm)

Beam: 11.75

Min Draft: 4' 1" (1.24mm)

Max Draft: 6' 10" (2.08mm)

Our experienced yacht broker, Andrey Shestakov, will help you choose and buy a yacht that best suits your needs **Anna May — WAUQUIEZ** from our catalogue. Presently, at Shestakov Yacht Sales Inc., we have a wide variety of yachts available on our sale's list. We also work in close contact with all the big yacht manufacturers from all over the world.

If you would like to buy a yacht **Anna May — WAUQUIEZ** or would like help answering any questions concerning purchasing, selling or chartering a yacht, please call **+1(954)274-4435**

TABLE OF CONTENTS

TABLE OF CONTENTS	2
SPECIFICATIONS	4
Overview	4
Basic Information	4
Dimensions	4
Speed, Capacities and Weight	4
Accommodations	4
Hull and Deck Information	4
Engine Information	5
PHOTOS	6
0_2795872_	6
1_2795872_	6
2_2795872_	6
3_2795872_	6
4_2795872_	6
5_2795872_	6
6_2795872_	7
7_2795872_	7
8_2795872_	7
9_2795872_	7
10_2795872_	7
11_2795872_	7
12_2795872_	8
13_2795872_	8
14_2795872_	8
15_2795872_	8
16_2795872_	8
17_2795872_	8

18_2795872_	9
19_2795872_	9
20_2795872_	9
21_2795872_	9
22_2795872_	9
23_2795872_	9
25_2795872_	10
24_2795872_	10
26_2795872_	10
27_2795872_	10
28_2795872_	10
29_2795872_	10
30_2795872_	11
31_2795872_	11
32_2795872_	11
33_2795872_	11
CONTACTS	12
Contact details	12
Telephones	12
Office hours	12
Address	12

SPECIFICATIONS

Overview

This 1986 Wauquiez Ted Hood 38 is fully equipped for extensive cruising or liveaboard. The shallow 4'6" draft makes it a great island boat but the 10'8" center board and heavy displacement allows this boat to point well to wind and be accommodating in heavy seas. One owner boat.

Basic Information

Category: Sloop

Model Year: 1986

Year Built: 1986

Country: United States

Dimensions

LOA: 38' (11.58mm)

Beam: 11.75

Min Draft: 4' 1" (1.24mm)

Max Draft: 6' 10" (2.08mm)

Speed, Capacities and Weight

Water Capacity: 85 Gallons

Holding Tank: 30 Gal Gallons

Fuel Capacity: 33 Gal Gallons

Accommodations

Total Cabins: 2

Hull and Deck Information

Hull Material: Fiberglass

Engine Information

Engines: 1

Manufacturer: Perkins

Engine Type: Inboard

Fuel Type: Diesel

PHOTOS

0_2795872_



1_2795872_



2_2795872_



3_2795872_



4_2795872_



5_2795872_



6_2795872_



7_2795872_



8_2795872_



9_2795872_



10_2795872_



11_2795872_



12_2795872_



13_2795872_



14_2795872_



15_2795872_



16_2795872_



17_2795872_



18_2795872_



19_2795872_



20_2795872_



21_2795872_



22_2795872_



23_2795872_



24_2795872_



25_2795872_



26_2795872_



27_2795872_



28_2795872_



29_2795872_



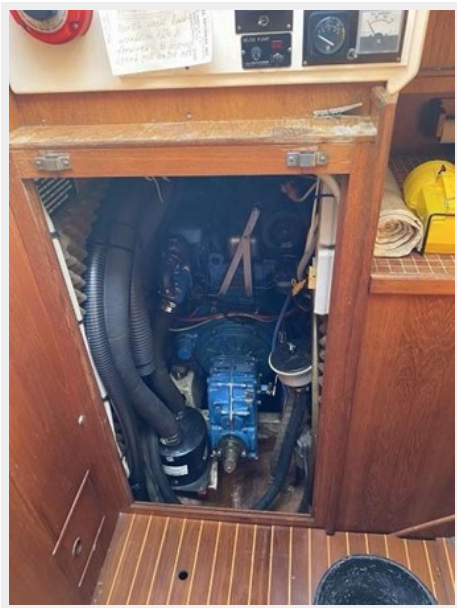
30_2795872_



31_2795872_



32_2795872_



33_2795872_



CONTACTS

Andrey Shestakov, leading yacht broker of the sales department of Shestakov Yacht Sales Inc. Shestakov Yacht Sales Inc., the official representative of the Miami/Fort Lauderdale FL headquarters.

Contact details

Email: andrey@shestakovyachtsales.com

Web: shestakovyachtsales.com/en/

Telephones

USA: +1(954)274-4435

Office hours

Monday – Saturday: **9:00 - 21:00** EDT

Sunday: **closed**

Address



Harbour Towne Marina, 850 NE 3rd St,
STE 213, Dania, FL 33004