

## HOME BERTH — ROBERTSON & CAINE



**Builder:** ROBERTSON & CAINE

**LOA:** 43' (13.11mm)

**Year Built:** 2005

**Beam:** 22.75

**Model:** Catamaran

**Max Draft:** 4' 3" (1.3mm)

**Price:** PRICE ON APPLICATION

**Location:** United States

Our experienced yacht broker, Andrey Shestakov, will help you choose and buy a yacht that best suits your needs **Home Berth — ROBERTSON & CAINE** from our catalogue. Presently, at **Shestakov Yacht Sales Inc.**, we have a wide variety of yachts available on our sale's list. We also work in close contact with all the big yacht manufacturers from all over the world.

If you would like to buy a yacht **Home Berth — ROBERTSON & CAINE** or would like help answering any questions concerning purchasing, selling or chartering a yacht, please call **+1(954)274-4435**

---

# TABLE OF CONTENTS

---

TABLE OF CONTENTS	2
SPECIFICATIONS	3
Overview	3
Basic Information	3
Dimensions	3
Speed, Capacities and Weight	3
Accommodations	3
Hull and Deck Information	3
Engine Information	4
PHOTOS	5
CONTACTS	20
Contact details	20
Telephones	20
Office hours	20
Address	20

---

# SPECIFICATIONS

---

## Overview

---

Home Berth is a 2005 Robertson and Caine Leopard 43 Sailing Catamaran, built in South Africa and designed by Simonis & Voogd. It is a four-cabin/four-head (now two head) blue-water sailing vessel that is incredibly sea-worthy and comfortable to sail. Home Berth is just the right size for two and a couple of friends. The current owners have lived aboard Home Berth for the past 3 1/2 years, traveling the Caribbean, Bahamas, and the eastern seaboard. She is now ready for her new crew (ow

## Basic Information

---

**Category:** Catamaran

**Model Year:** 2005

**Year Built:** 2005

**Country:** United States

## Dimensions

---

**LOA:** 43' (13.11mm)

**LWL:** 40' (12.19mm)

**Beam:** 22.75

**Max Draft:** 4' 3" (1.3mm)

## Speed, Capacities and Weight

---

**Water Capacity:** 95 Gallons

**Fuel Capacity:** 95 Gal Gallons

## Accommodations

---

**Total Cabins:** 4

**Total Heads:** 2

## Hull and Deck Information

---

**Hull Material:** Fiberglass

---

## Engine Information

---

**Engines:** 2

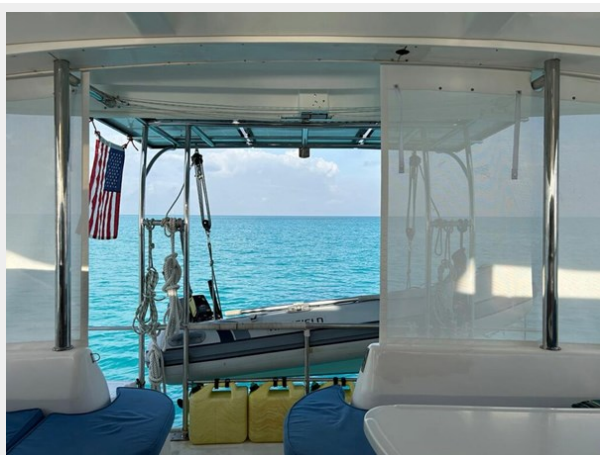
**Manufacturer:** Yanmar

**Engine Type:** Inboard

**Fuel Type:** Diesel

# PHOTOS

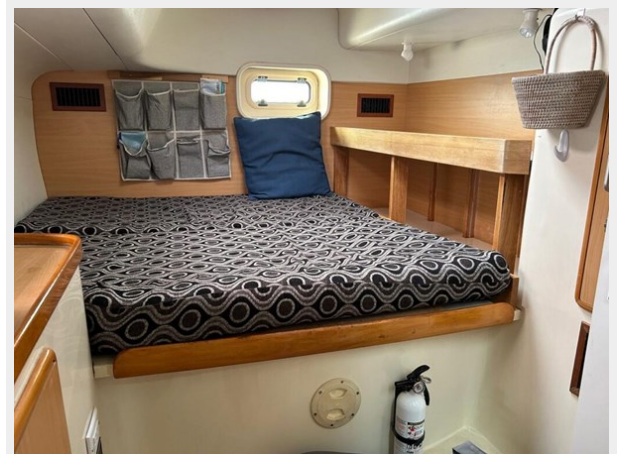




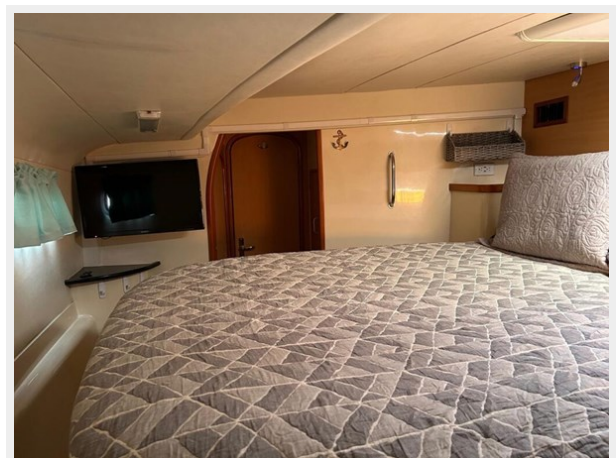
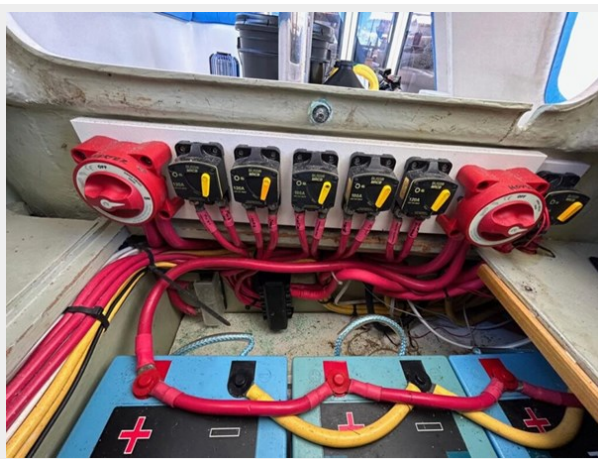




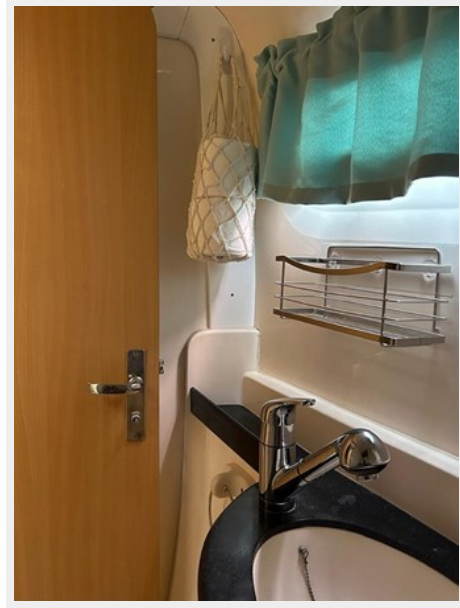






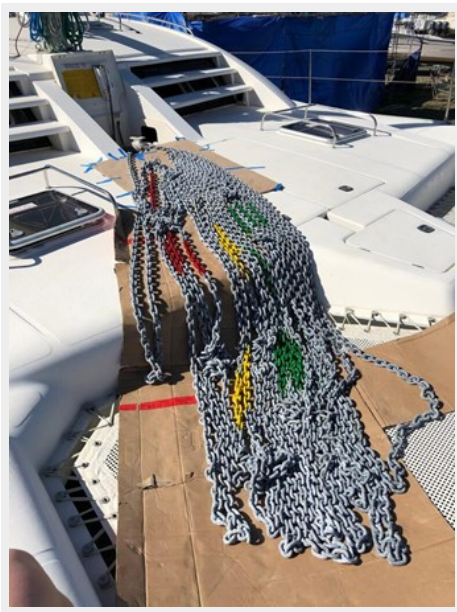






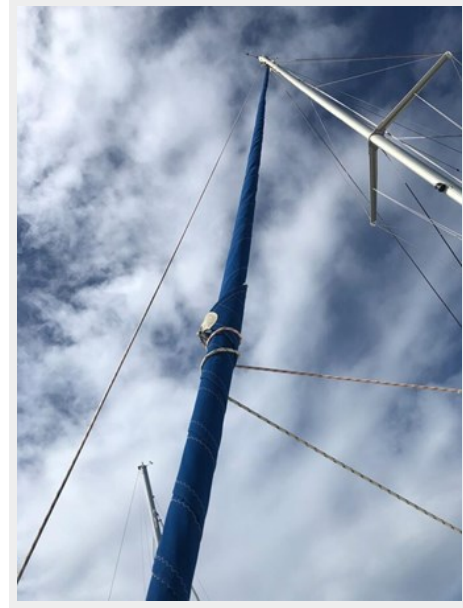














# CONTACTS

---

Andrey Shestakov, leading yacht broker of the sales department of Shestakov Yacht Sales Inc. Shestakov Yacht Sales Inc., the official representative of the Miami/Fort Lauderdale FL headquarters.

## Contact details

---

Email: [andrey@shestakovyachtsales.com](mailto:andrey@shestakovyachtsales.com)

Web: [shestakovyachtsales.com/en/](http://shestakovyachtsales.com/en/)

## Telephones

---

USA: +1(954)274-4435

## Office hours

---

Monday – Saturday: **9:00 - 21:00** EDT

Sunday: **closed**

## Address

---



Harbour Towne Marina, 850 NE 3rd St,  
STE 213, Dania, FL 33004