

## ENDLESS SUMMER II — PRESTIGE



**Builder:** PRESTIGE

**Year Built:** 2018

**Model:** Flybridge

**Price:** PRICE ON APPLICATION

**Location:** France

**LOA:** 70' 5" (21.45m)

**Beam:** 17.48

**Max Draft:** 5' 3" (1.58m)

**Cruise Speed:** 25 Knots Kts. (29 MPH)

**Max Speed:** 30 Knots Kts. (35 MPH)

Our experienced yacht broker, Andrey Shestakov, will help you choose and buy a yacht that best suits your needs **ENDLESS SUMMER II — PRESTIGE** from our catalogue. Presently, at Shestakov Yacht Sales Inc., we have a wide variety of yachts available on our sale's list. We also work in close contact with all the big yacht manufacturers from all over the world.

If you would like to buy a yacht **ENDLESS SUMMER II — PRESTIGE** or would like help answering any questions concerning purchasing, selling or chartering a yacht, please call **+1(954)274-4435**

# TABLE OF CONTENTS

TABLE OF CONTENTS	2
SPECIFICATIONS	4
Overview	4
Basic Information	4
Dimensions	4
Speed, Capacities and Weight	5
Accommodations	5
Hull and Deck Information	5
Engine Information	5
PHOTOS	6
Prestige 680 - ENDLESS SUMMER 102	6
Prestige 680 - ENDLESS SUMMER 101	6
Prestige 680 - ENDLESS SUMMER 103	6
Prestige 680 - ENDLESS SUMMER 104	6
Prestige 680 - ENDLESS SUMMER 105	6
Prestige 680 - ENDLESS SUMMER 106	6
Prestige 680 - ENDLESS SUMMER 108	7
Prestige 680 - ENDLESS SUMMER 107	7
Prestige 680 - ENDLESS SUMMER 113	7
Prestige 680 - ENDLESS SUMMER 114	7
Prestige 680 - ENDLESS SUMMER 115	7
Prestige 680 - ENDLESS SUMMER 116	7
Prestige 680 - ENDLESS SUMMER 120	8
Prestige 680 - ENDLESS SUMMER 121	8
Prestige 680 - ENDLESS SUMMER 122	8
Prestige 680 - ENDLESS SUMMER 123	8
Prestige 680 - ENDLESS SUMMER 124	8
Prestige 68 - Endless Summer 2 25	8

---

Prestige 68 - Endless Summer 2 26	9
Prestige 68 - Endless Summer 2 27	9
Prestige 68 - Endless Summer 2 28	9
Prestige 68 - Endless Summer 2 29	9
Prestige 68 - Endless Summer 2 36	9
Prestige 68 - Endless Summer 2 37	9
Prestige 68 - Endless Summer 2 38	10
Prestige 68 - Endless Summer 2 39	10
Prestige 68 - Endless Summer 2 40	10
Prestige 68 - Endless Summer 2 41	10
<b>CONTACTS</b>	<b>11</b>
Contact details	11
Telephones	11
Office hours	11
Address	11

---

# SPECIFICATIONS

---

## Overview

---

A 70 foot yacht with full equipment and freshly refurbished. Best price / performance ratio - more is not possible.

This Prestige 680 leaves nothing to be desired with her complete equipment. Whether it's the gyro stabilization system, the hydraulic bathing platform, the hardtop, or the IPS 1200 with joystick, she offers all the features an owner and his family expect from a 70-foot yacht. The interior is flooded with sunlight and the saloon with its open kitchen offers plenty of space, intelligently divided into different zones. From the helm station, the captain has a good overview and, thanks to the side door, can also quickly access the foredeck to work on the anchor or retrieve the mooring line when mooring. The foredeck offers plenty of sunbathing space with a Cocoon sunshade that folds out and is very tidy thanks to the widening at the anchor locker. The flybridge with hardtop is spacious and intelligently divided. The dining area is easily accessible and offers space for 8 people. The bar is compact and not in the way, the sun loungers not too small but well positioned. The helm is well laid out and the bench is comfortable even for longer crossings, for example to Ibiza or Formenterra.

The crew has separate quarter with bathroom in the aft.

The owner has just refitted the yacht to eliminate all child's play, for example the bathing platform was only glued at the factory and has now been firmly screwed down with 6 large screws. The black water system has been overhauled and 3 new pumps and valves installed. The hydraulics have also been repaired and cosmetic work has been done. All in all, she is now ready for a new owner to take over the yacht without any problems and with pleasure.

---

## Basic Information

---

**Category:** Flybridge

**Sub Category:** Flybridge

**Model Year:** 2018

**Year Built:** 2018

**Country:** France

---

## Dimensions

---

**LOA:** 70' 5" (21.45mm)

**Beam:** 17.48

**Max Draft:** 5' 3" (1.58mm)

---

## Speed, Capacities and Weight

---

**Cruise Speed:** 25 Knots Kts. (29 MPH)

**Cruise Speed Range:** 350

**Max Speed:** 30 Knots Kts. (35 MPH)

**Water Capacity:** 760 Gallons

**Holding Tank:** 76.61 Gal Gallons

**Fuel Capacity:** 911.39 Gal Gallons

---

## Accommodations

---

**Total Cabins:** 4

**Total Heads:** 1

---

## Hull and Deck Information

---

**Hull Material:** GRP

---

## Engine Information

---

**Engines:** 2

**Manufacturer:** Volvo Penta

**Engine Type:** Inboard

**Fuel Type:** Diesel

# PHOTOS

**Prestige 680 - ENDLESS SUMMER 101**



**Prestige 680 - ENDLESS SUMMER 102**



**Prestige 680 - ENDLESS SUMMER 103**



**Prestige 680 - ENDLESS SUMMER 104**



**Prestige 680 - ENDLESS SUMMER 105**



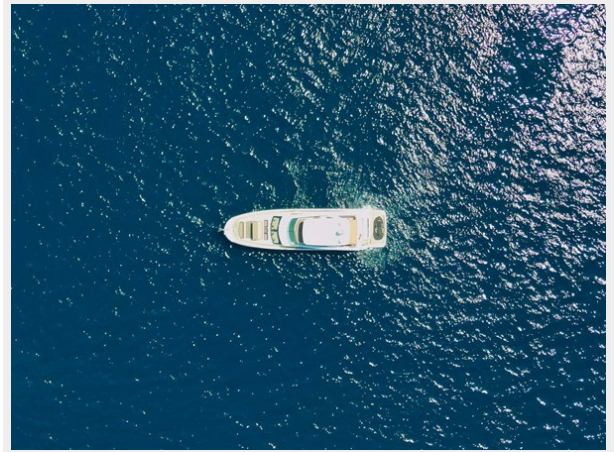
**Prestige 680 - ENDLESS SUMMER 106**



**Prestige 680 - ENDLESS SUMMER 107**



**Prestige 680 - ENDLESS SUMMER 108**



**Prestige 680 - ENDLESS SUMMER 113**



**Prestige 680 - ENDLESS SUMMER 114**



**Prestige 680 - ENDLESS SUMMER 115**



**Prestige 680 - ENDLESS SUMMER 116**



**Prestige 680 - ENDLESS SUMMER 120**



**Prestige 680 - ENDLESS SUMMER 121**



**Prestige 680 - ENDLESS SUMMER 122**



**Prestige 680 - ENDLESS SUMMER 123**



**Prestige 680 - ENDLESS SUMMER 124**



**Prestige 68 - Endless Summer 2 25**





**Prestige 68 - Endless Summer 2 26**



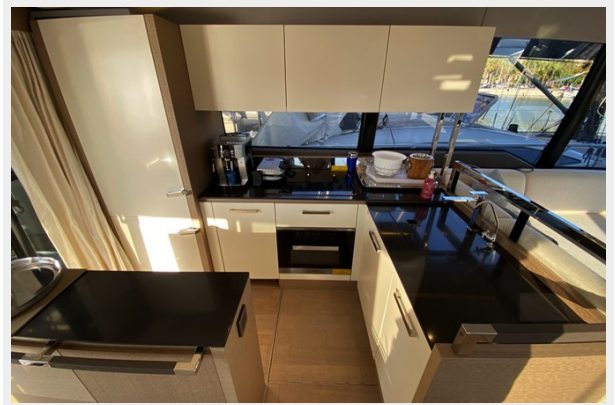
**Prestige 68 - Endless Summer 2 27**



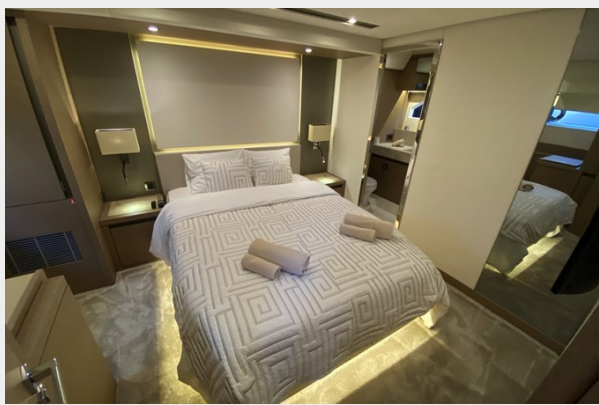
**Prestige 68 - Endless Summer 2 28**



**Prestige 68 - Endless Summer 2 29**



**Prestige 68 - Endless Summer 2 36**



**Prestige 68 - Endless Summer 2 37**



**Prestige 68 - Endless Summer 2 38**



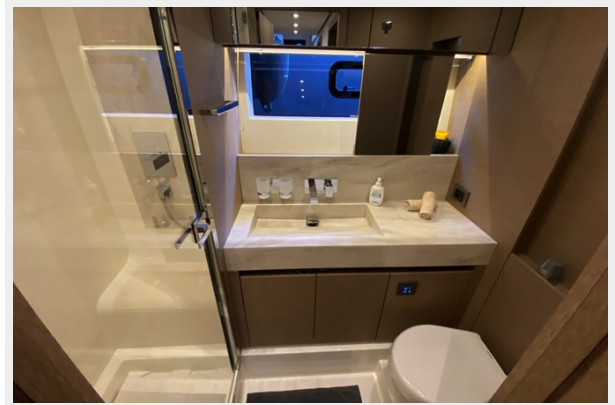
**Prestige 68 - Endless Summer 2 39**



**Prestige 68 - Endless Summer 2 40**



**Prestige 68 - Endless Summer 2 41**



# CONTACTS

---

Andrey Shestakov, leading yacht broker of the sales department of Shestakov Yacht Sales Inc. Shestakov Yacht Sales Inc., the official representative of the Miami/Fort Lauderdale FL headquarters.

## Contact details

---

Email: [andrey@shestakovyachtsales.com](mailto:andrey@shestakovyachtsales.com)

Web: [shestakovyachtsales.com/en/](http://shestakovyachtsales.com/en/)

## Telephones

---

USA: +1(954)274-4435

## Office hours

---

Monday – Saturday: **9:00 - 21:00** EDT

Sunday: **closed**

## Address

---



Harbour Towne Marina, 850 NE 3rd St,  
STE 213, Dania, FL 33004