

AWESOME — MALCOLM TENNANT MULTIHULL DESIGN



Builder:

MALCOLM TENNANT MULTIHULL DESIGN

Year Built: 1993

Model: Catamaran

Price: \$650,000 USD

Location: United States

LOA: 68' (20.73mm)

Beam: 25

Max Draft: 5' (1.52mm)

Our experienced yacht broker, Andrey Shestakov, will help you choose and buy a yacht that best suits your needs **Awesome — MALCOLM TENNANT MULTIHULL DESIGN** from our catalogue. Presently, at Shestakov Yacht Sales Inc., we have a wide variety of yachts available on our sale's list. We also work in close contact with all the big yacht manufacturers from all over the world.

If you would like to buy a yacht **Awesome — MALCOLM TENNANT MULTIHULL DESIGN** or would like help answering any questions concerning purchasing, selling or chartering a yacht, please call **+1(954)274-4435**

TABLE OF CONTENTS

| | |
|------------------------------|----|
| TABLE OF CONTENTS | 2 |
| SPECIFICATIONS | 3 |
| Overview | 3 |
| Basic Information | 3 |
| Dimensions | 3 |
| Speed, Capacities and Weight | 3 |
| Accommodations | 3 |
| Hull and Deck Information | 4 |
| Engine Information | 4 |
| PHOTOS | 5 |
| CONTACTS | 12 |
| Contact details | 12 |
| Telephones | 12 |
| Office hours | 12 |
| Address | 12 |

SPECIFICATIONS

Overview

This is Awesome. And truly she is. Everybody says so. Every time we dock or someone kayaks between her hulls we hear them exclaim it . . . Awesome! . . . and then they see the name on the transom. After 8 years of ownership, thousands of sea miles, and 5 years of living aboard I have to agree! Awesome is a Malcolm Tennant designed canoe-stern power catamaran designed to cross oceans with aplomb. She was built in New Zealand, crossed through Panama to Florida on her own bottom, and explored the Caribbean and East coasts of North and South America. Then she went back through Panama and up the West Coast to Washington State for a substantial refit. After refitting, she has been a wonderful liveaboard home and Northwest exploration vehicle for all of Puget Sound, the Inside Passage, and SE Alaska. She is truly a world cruising catamaran and an excellent liveaboard - especially for families with children.

Basic Information

Category: Catamaran

Model Year: 1993

Year Built: 1993

Country: United States

Dimensions

LOA: 68' (20.73mm)

Beam: 25

Max Draft: 5' (1.52mm)

Speed, Capacities and Weight

Fuel Capacity: 2000 Gal Gallons

Accommodations

Total Cabins: 3

Total Heads: 2

Hull and Deck Information

Hull Material: Fiberglass

Engine Information

Engines: 2

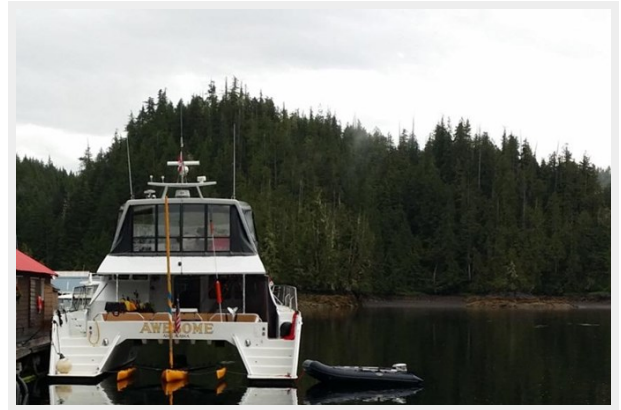
Manufacturer: Yanmar

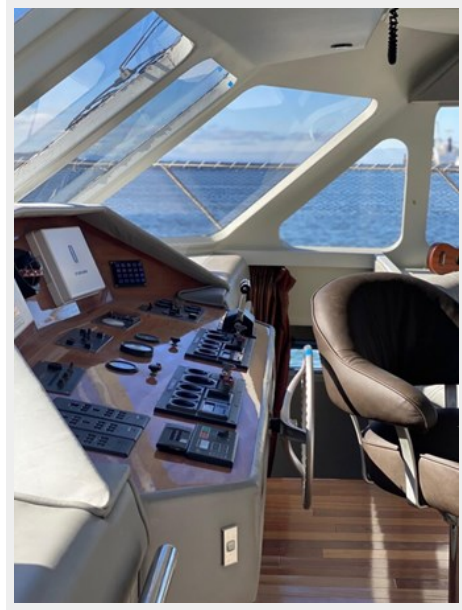
Engine Type: Inboard

Fuel Type: Diesel

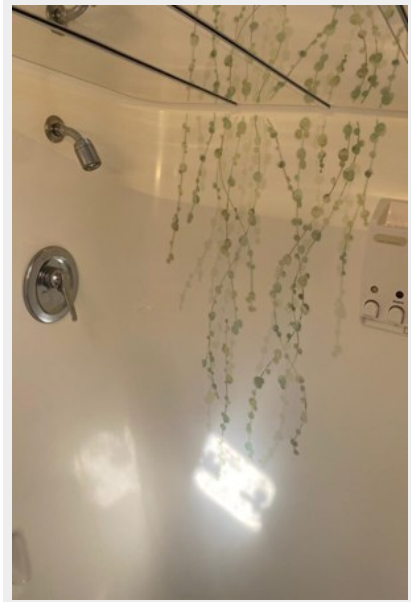
PHOTOS

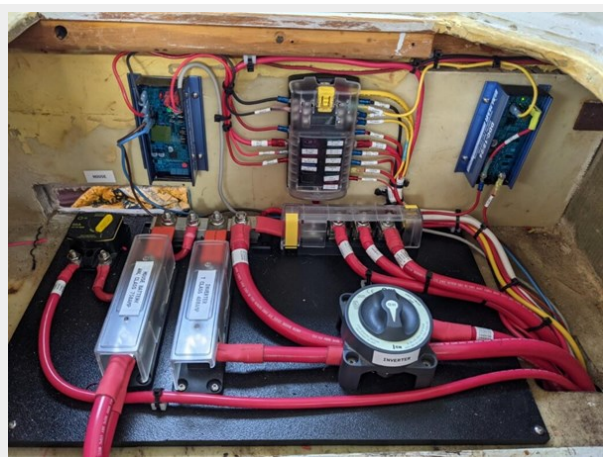














CONTACTS

Andrey Shestakov, leading yacht broker of the sales department of Shestakov Yacht Sales Inc. Shestakov Yacht Sales Inc., the official representative of the Miami/Fort Lauderdale FL headquarters.

Contact details

Email: andrey@shestakovyachtsales.com

Web: shestakovyachtsales.com/en/

Telephones

USA: +1(954)274-4435

Office hours

Monday – Saturday: **9:00 - 21:00** EDT

Sunday: **closed**

Address



Harbour Towne Marina, 850 NE 3rd St,
STE 213, Dania, FL 33004