

OUTBOUND — CUSTOM BUILT



Builder: CUSTOM BUILT

Year Built: 1980

Model: Trimaran

Price: PRICE ON APPLICATION

Location: United States

LOA: 50' (15.24mm)

Beam: 24

Max Draft: 11' (3.35mm)

Our experienced yacht broker, Andrey Shestakov, will help you choose and buy a yacht that best suits your needs **Outbound — CUSTOM BUILT** from our catalogue. Presently, at Shestakov Yacht Sales Inc., we have a wide variety of yachts available on our sale's list. We also work in close contact with all the big yacht manufacturers from all over the world.

If you would like to buy a yacht **Outbound — CUSTOM BUILT** or would like help answering any questions concerning purchasing, selling or chartering a yacht, please call **+1(954)274-4435**

TABLE OF CONTENTS

TABLE OF CONTENTS	2
SPECIFICATIONS	3
Overview	3
Basic Information	3
Dimensions	3
Speed, Capacities and Weight	3
Accommodations	4
Hull and Deck Information	4
Engine Information	4
PHOTOS	5
CONTACTS	8
Contact details	8
Telephones	8
Office hours	8
Address	8

SPECIFICATIONS

Overview

This can be your Escape Vehicle. She is an escape from the high cost of living, from mortgage payments, from offices and commutes, and from a bound and tethered life. She is Outbound and you can be too. Outbound is an escape to just about anywhere you choose to sail her and she is a special boat. Most trimarans of her era were home-built and have deteriorated with age due to substandard skill, cheap materials, or negligent care. Not Outbound. She is a rare professionally built Piver AA48. She has been recently refit, and is in active use. Her hulls are cold molded marine plywood fiberglass using the more costly and durable epoxy resin (not polyester or vinylester). Her current owner has done all of the work and upgrades needed to put her in cruising order. She has all new wiring, plumbing, brand new Furuno electronics, and fresh rigging. She has a ketch rig and extensive suit of sails for ease of handling and versatility. She has spacious, sheltered, and comfortable accommodations. Outbound is an Arthur Piver design extended to 50'. She has had a foam core daggerboard added for high pointing ability and efficiency off the wind. She is fitted with an efficient and easy-to-maintain Perkins 4-108 diesel engine. Her keelson is reinforced for beaching and her hulls are a stout 1.5" thick below the waterline. Outbound is ready to be your home in the Portland metropolitan area or anywhere in the world you may point her. After many years of refit and care, her owners have had a change of plans. This makes Outbound the best type of Escape Vehicle. . . an affordable multihull where someone else has done all of the work and you can enjoy all of the joy, experiences, and pleasure she will bring. Call now to schedule a viewing.

Basic Information

Category: Trimaran

Model Year: 1980

Year Built: 1980

Country: United States

Dimensions

LOA: 50' (15.24mm)

Beam: 24

Max Draft: 11' (3.35mm)

Speed, Capacities and Weight

Fuel Capacity: 116 Gal Gallons

Accommodations

Total Heads: 1

Hull and Deck Information

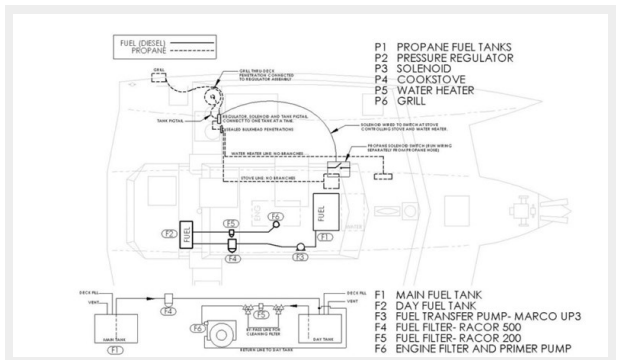
Hull Material: Composite

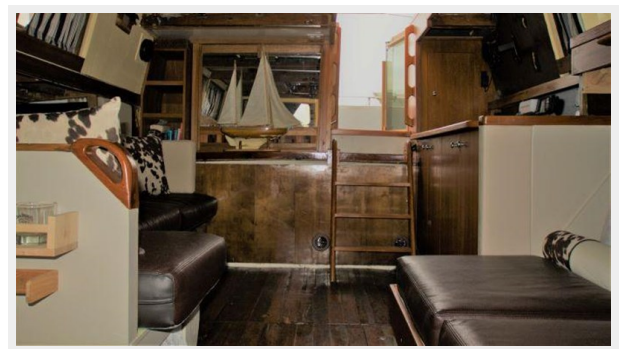
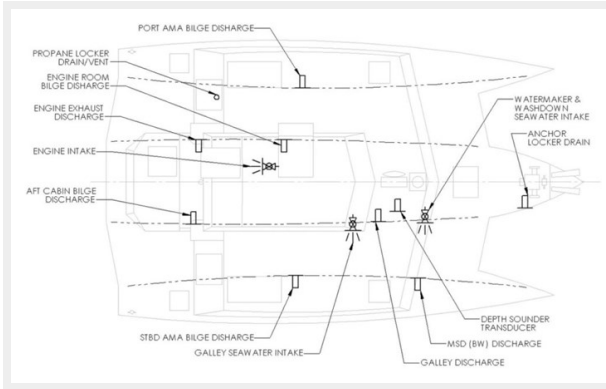
Engine Information

Engines: 1

Manufacturer: Perkins

PHOTOS







CONTACTS

Andrey Shestakov, leading yacht broker of the sales department of Shestakov Yacht Sales Inc. Shestakov Yacht Sales Inc., the official representative of the Miami/Fort Lauderdale FL headquarters.

Contact details

Email: andrey@shestakovyachtsales.com

Web: shestakovyachtsales.com/en/

Telephones

USA: +1(954)274-4435

Office hours

Monday – Saturday: **9:00 - 21:00** EDT

Sunday: **closed**

Address



Harbour Towne Marina, 850 NE 3rd St,
STE 213, Dania, FL 33004