

THE KRAKEN — LEOPARD



Builder: LEOPARD

Year Built: 2004

Model: Catamaran

Price: \$325,000 USD

Location: Panama

LOA: 41' 5" (12.62mm)

Beam: 22.75

Max Draft: 4' 6" (1.37mm)

Our experienced yacht broker, Andrey Shestakov, will help you choose and buy a yacht that best suits your needs **The Kraken — LEOPARD** from our catalogue. Presently, at Shestakov Yacht Sales Inc., we have a wide variety of yachts available on our sale's list. We also work in close contact with all the big yacht manufacturers from all over the world.

If you would like to buy a yacht **The Kraken — LEOPARD** or would like help answering any questions concerning purchasing, selling or chartering a yacht, please call **+1(954)274-4435**

TABLE OF CONTENTS

TABLE OF CONTENTS	2
SPECIFICATIONS	3
Overview	3
Basic Information	3
Dimensions	3
Accommodations	3
Hull and Deck Information	3
Engine Information	4
PHOTOS	5
CONTACTS	20
Contact details	20
Telephones	20
Office hours	20
Address	20

SPECIFICATIONS

Overview

In the water, and ready to be surveyed. Perfect for a family or couple. British flagged! NEW in 2022/23 - Kiwi folding Propellers, US Spars installed standing rigging, e, Bottom Paint, Chartplotter (Axiom plus 9RV), Windshield, Autopilot control head, VHF . . . contact for full list. Truly ready to go. 2004 Robertson & Caine Leopard 42 owner version sailing catamaran for sale. Currently docked in Panama, back into the Caribbean, or thru the canal and into the Pacific where will The Kraken take you? Featuring 1490 total watts of solar, four 300Ah Relion 8D lithium batteries for total of 1200Ah, a Victron Multiplus 3000 inverter/charger, two Yanmar 3JH3E 39hp diesel engines and two Mark Grasser 180amp alternators. She has plenty of power for an off-grid lifestyle or blue water cruising. Also equipped with a 12v dual-membrane Sea Water Pro analog watermaker system, dual AC units equipped with soft starts and built-in washing machine and ice maker, add an extra level of comfort. And the ample cockpit with an integrated, protected helm and custom solar arch /dinghy davits that provides additional cockpit seating as well as a high dive platform are ready to entertain your family and friends.

Basic Information

Category: Catamaran

Model Year: 2004

Year Built: 2004

Country: Panama

Dimensions

LOA: 41' 5" (12.62mm)

LWL: 37' 9" (11.51mm)

Beam: 22.75

Max Draft: 4' 6" (1.37mm)

Accommodations

Total Cabins: 3

Total Heads: 3

Hull and Deck Information

Hull Material: Fiberglass

Engine Information

Engines: 2

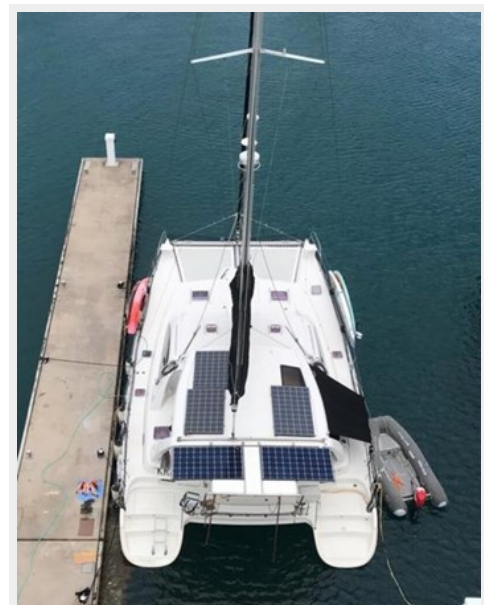
Manufacturer: Yanmar

Engine Type: Inboard

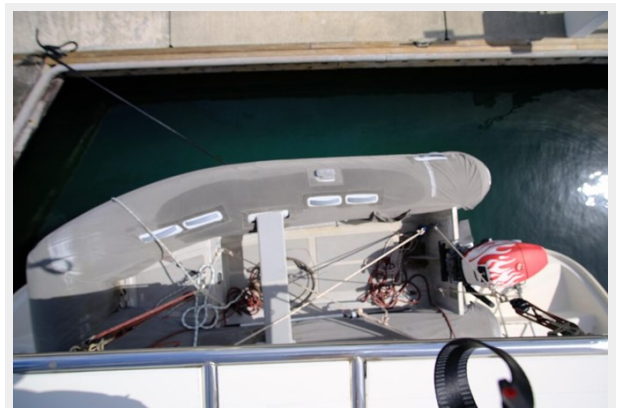
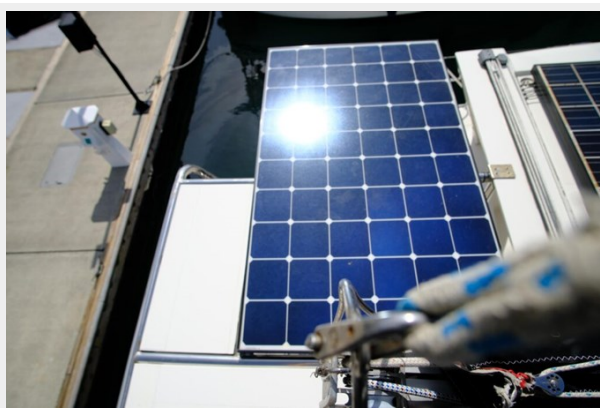
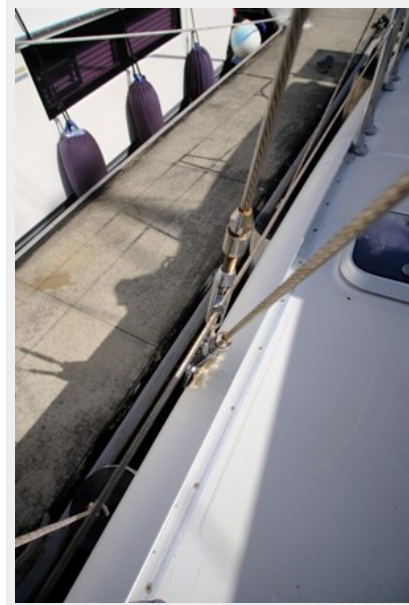
Fuel Type: Diesel

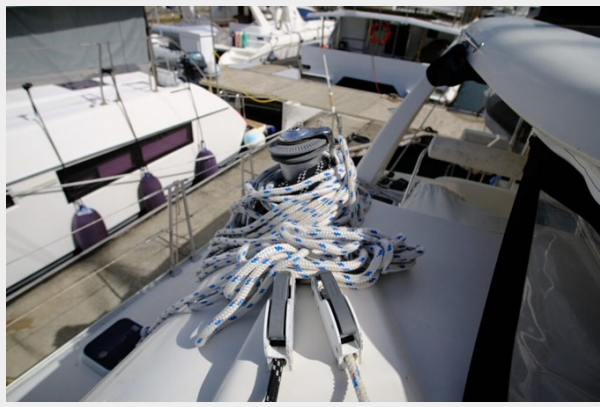
PHOTOS







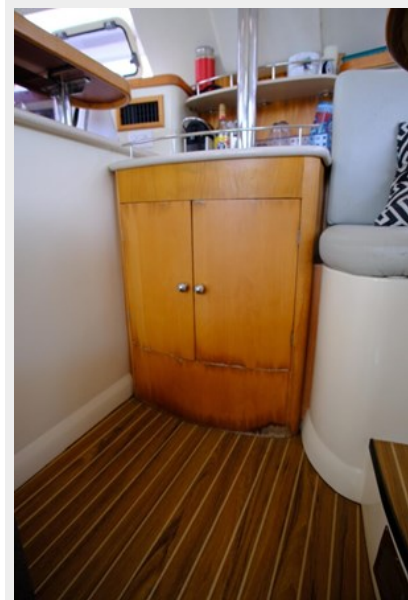


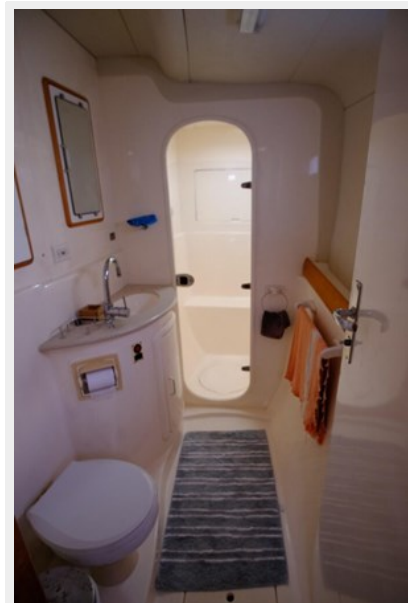


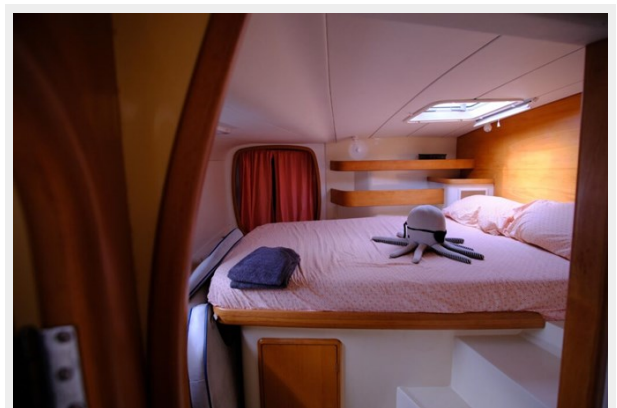
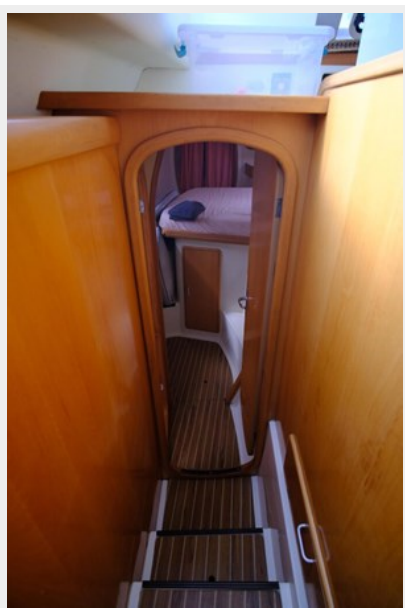






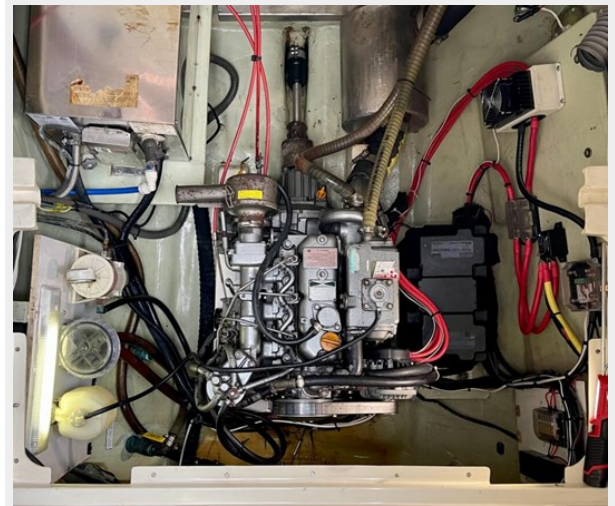


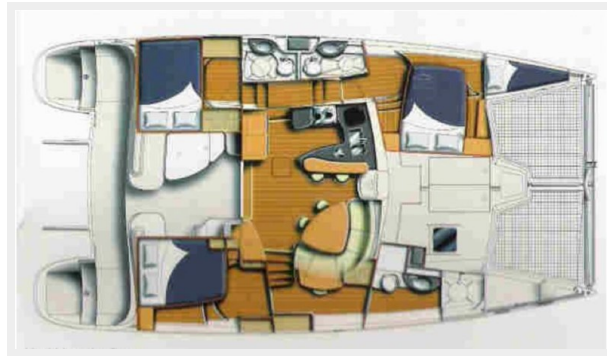












CONTACTS

Andrey Shestakov, leading yacht broker of the sales department of Shestakov Yacht Sales Inc. Shestakov Yacht Sales Inc., the official representative of the Miami/Fort Lauderdale FL headquarters.

Contact details

Email: andrey@shestakovyachtsales.com

Web: shestakovyachtsales.com/en/

Telephones

USA: +1(954)274-4435

Office hours

Monday – Saturday: **9:00 - 21:00** EDT

Sunday: **closed**

Address



Harbour Towne Marina, 850 NE 3rd St,
STE 213, Dania, FL 33004