

## NO NAME — L&H



**Builder:** L&H

**Year Built:** 2000

**Model:** Sport Fisherman

**Price:** PRICE ON APPLICATION

**Location:** United States

**LOA:** 33' (10.06m)

**Beam:** 12

**Min Draft:** 3' (0.91m)

**Cruise Speed:** 25 Knots Kts. (29 MPH)

**Max Speed:** 30 Knots Kts. (35 MPH)

Our experienced yacht broker, Andrey Shestakov, will help you choose and buy a yacht that best suits your needs **No Name — L&H** from our catalogue. Presently, at Shestakov Yacht Sales Inc., we have a wide variety of yachts available on our sale's list. We also work in close contact with all the big yacht manufacturers from all over the world.

If you would like to buy a yacht **No Name — L&H** or would like help answering any questions concerning purchasing, selling or chartering a yacht, please call **+1(954)274-4435**

# TABLE OF CONTENTS

TABLE OF CONTENTS	2
SPECIFICATIONS	4
Overview	4
Basic Information	4
Dimensions	4
Speed, Capacities and Weight	4
Accommodations	4
Hull and Deck Information	4
Engine Information	5
PHOTOS	6
Release Chairs and Rocket Launcher	6
Helm Deck	6
View from Cockpit	6
Forward View of Tower	6
Helm Pod with Single Lever Controls	6
Cockpit View from Tower	6
Overhead Electronics Box	7
Helm Seating, Center Console Helm Pod	7
High Seas Marlin Tower with Hardtops	7
Chrome Bezel Instrument Cluster	7
Tower Helm	7
Furuno GPS-Plotter in Tower	7
Walk-around Bow Area	8
Forward Walk-around Non-Skid Deck	8
Tower from Bow View	8
Walk-around Side Decks	8
Helm Chair and Helm Deck	8
Cockpit Chair, Portside	8

021 Cabin Console, Main Electrical Panel, Air Cond. and Gen Controls	9
020 Cockpit Chair, Starboard Side and Rocket Launcher	9
V-Berth Forward	9
Cabin with V-Berth Filler in Place	9
Cabin View from Door	9
Portside Cabin Hanging Locker	9
Electric Head	10
Microwave, Sink, Electrical Panel, A/C and Generator Controls	10
Engine Room, Generator in Center Aft	10
Engine Room Drop Down Hatch	10
Starboard Cummins Diesel	10
Racor Primary Fuel Filters	10
Engine Room Centerline	11
Starboard Motor	11
Cummins 330hp Diesels	11
Next Gen 5kW Generator	11
Battery Shutoff Switches and Parallel above Generator	11
Port Motor	11
Underdeck Insulated Fishbox	12
Rudder Access- Lazarette	12
Underdeck Livewell with Natural Flow	12
001 Profile	12
Freshly Painted Hull-Transom Door	12
<b>CONTACTS</b>	<b>13</b>
Contact details	13
Telephones	13
Office hours	13
Address	13

---

# SPECIFICATIONS

---

## Overview

---

N/A

## Basic Information

---

**Category:** Sport Fisherman

**Model Year:** 2001

**Year Built:** 2000

**Country:** United States

## Dimensions

---

**LOA:** 33' (10.06mm)

**Beam:** 12

**Min Draft:** 3' (0.91mm)

## Speed, Capacities and Weight

---

**Cruise Speed:** 25 Knots Kts. (29 MPH)

**Max Speed:** 30 Knots Kts. (35 MPH)

**Gross Tonnage:** 14000 Pounds

**Water Capacity:** 35 Gallons

**Holding Tank:** 5 Gal Gallons

**Fuel Capacity:** 300 Gal Gallons

## Accommodations

---

**Total Cabins:** 1

**Total Heads:** 1

## Hull and Deck Information

---

**Hull Material:** Fiberglass

**Hull Configuration:** Modified V-Hull

**Hull Color:** Light Blue

---

## Engine Information

---

**Engines:** 2

**Manufacturer:** Cummins

**Engine Type:** Inboard

**Fuel Type:** Diesel

# PHOTOS

**Release Chairs and Rocket Launcher**



**Helm Deck**



**Forward View of Tower**



**View from Cockpit**



**Cockpit View from Tower**



**Helm Pod with Single Lever Controls**



**Helm Seating, Center Console Helm Pod**



**Overhead Electronics Box**



**Chrome Bezel Instrument Cluster**



**High Seas Marlin Tower with Hardtops**



**Tower Helm**



**Furuno GPS-Plotter in Tower**



**Forward Walk-around Non-Skid Deck**



**Walk-around Bow Area**



**Tower from Bow View**



**Walk-around Side Decks**



**Helm Chair and Helm Deck**

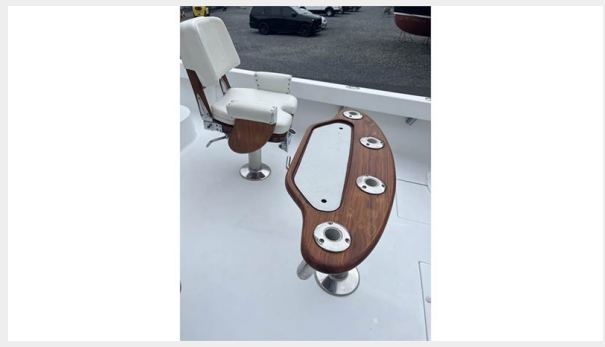


**Cockpit Chair, Portside**

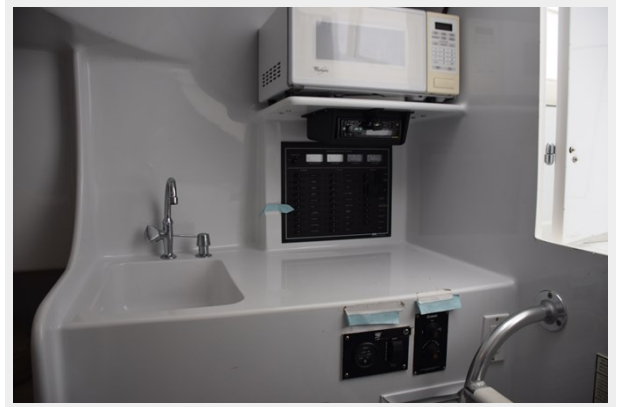




**020 Cockpit Chair, Starboard Side and Rocket Launcher**



**021 Cabin Console, Main Electrical Panel, Air Cond. and Gen Controls**



**V-Berth Forward**



**Cabin with V-Berth Filler in Place**



**Cabin View from Door**



**Portside Cabin Hanging Locker**



**Electric Head**



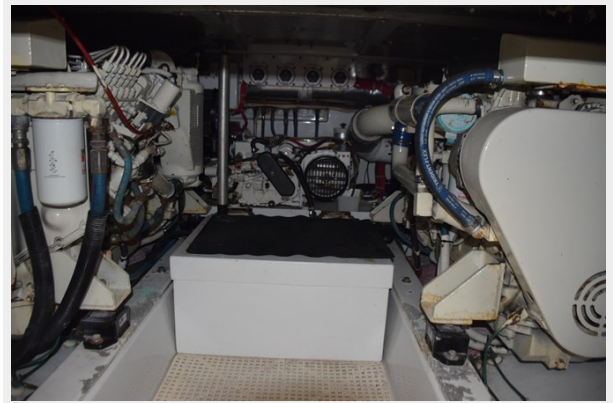
**Microwave, Sink, Electrical Panel, A/C and Generator Controls**



**Engine Room Drop Down Hatch**



**Engine Room, Generator in Center Aft**



**Racor Primary Fuel Filters**



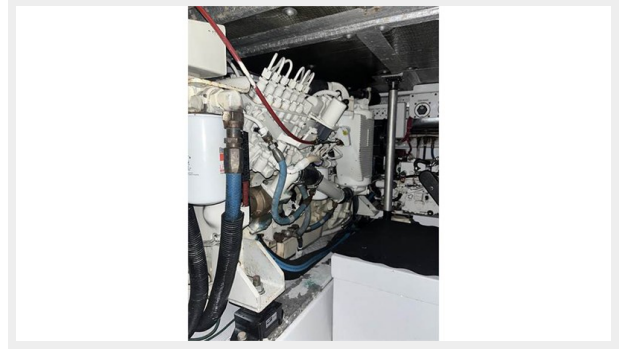
**Starboard Cummins Diesel**



**Engine Room Centerline**



**Starboard Motor**



**Cummins 330hp Diesels**



**Next Gen 5kW Generator**



**Battery Shutoff Switches and Parallel above Generator**



**Port Motor**



**Underdeck Insulated Fishbox**



**Rudder Access- Lazarette**



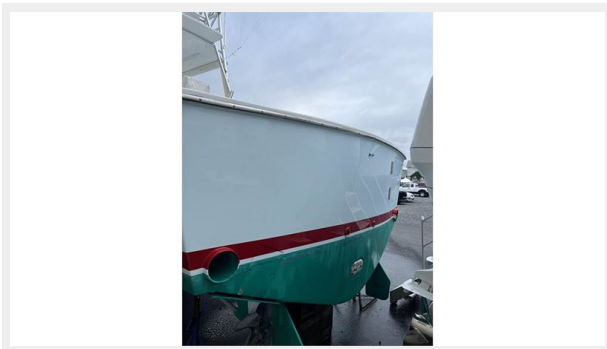
**Underdeck Livewell with Natural Flow**



**001 Profile**



**Freshly Painted Hull-Transom Door**



---

# CONTACTS

---

Andrey Shestakov, leading yacht broker of the sales department of Shestakov Yacht Sales Inc. Shestakov Yacht Sales Inc., the official representative of the Miami/Fort Lauderdale FL headquarters.

---

## Contact details

---

Email: [andrey@shestakovyachtsales.com](mailto:andrey@shestakovyachtsales.com)

Web: [shestakovyachtsales.com/en/](http://shestakovyachtsales.com/en/)

---

## Telephones

---

USA: +1(954)274-4435

---

## Office hours

---

Monday – Saturday: **9:00 - 21:00** EDT

Sunday: **closed**

---

## Address

---



Harbour Towne Marina, 850 NE 3rd St,  
STE 213, Dania, FL 33004