

QUICK RELEASE — CHRIS-CRAFT



Builder: CHRIS-CRAFT

Year Built: 1968

Model: Classic

Price: PRICE ON APPLICATION

Location: Canada

LOA: 57' 3" (17.45mm)

Beam: 15.33

Max Draft: 3' 8" (1.12mm)

Cruise Speed: 12 Knots Kts. (14 MPH)

Our experienced yacht broker, Andrey Shestakov, will help you choose and buy a yacht that best suits your needs **Quick Release — CHRIS-CRAFT** from our catalogue. Presently, at Shestakov Yacht Sales Inc., we have a wide variety of yachts available on our sale's list. We also work in close contact with all the big yacht manufacturers from all over the world.

If you would like to buy a yacht **Quick Release — CHRIS-CRAFT** or would like help answering any questions concerning purchasing, selling or chartering a yacht, please call **+1(954)274-4435**

TABLE OF CONTENTS

TABLE OF CONTENTS	2
SPECIFICATIONS	4
Overview	4
Basic Information	4
Dimensions	4
Speed, Capacities and Weight	4
Accommodations	4
Hull and Deck Information	5
Engine Information	5
PHOTOS	6
bow	6
Cabin	6
Dingey	6
IMG_0870b	6
Floor	7
Galley 2	7
Galley 3	7
Galley	7
hall	8
crew	8
Helm	8
Lights	8
lounge	9
Master	9
Pilot 2	9
Port side	9
Sallon	10
side	10

Stairs	10
Stern	10
Table 2	11
table	11
V Berth	11
engine 1	11
Engine 3	12
Gen 1	12
CONTACTS	13
Contact details	13
Telephones	13
Office hours	13
Address	13

SPECIFICATIONS

Overview

A true Motor Yacht, classic lines designed by Chris Craft the Roamer 53 is a top of the line long distance cruiser. Quick Re-Lease was laid-up in 1998 but in 1999 she had a major refit which included a new steel bottom, full interior design and fabrication using high end materials. The owner has kept her in great condition and over the year has added features like, new Nav equipment, a hydraulic tender lift, new 15Kw transformer, 24V china heads, new fuel tanks, Verus bow thruster plus many more.

This boat turns heads anywhere it goes and can cruise and entertain a large crowd for the entire season. Have a look at this one of a kind luxury Yacht. Book your viewing today, Bridge Yachts.

Basic Information

Category: Classic

Sub Category: Classic

Model Year: 1968

Year Built: 1968

Refit Type: New bottom

Country: Canada

Dimensions

LOA: 57' 3" (17.45m)

Beam: 15.33

Max Draft: 3' 8" (1.12m)

Speed, Capacities and Weight

Cruise Speed: 12 Knots Kts. (14 MPH)

Fuel Capacity: 246 Gal Gallons

Accommodations

Total Cabins: 3

Hull and Deck Information

Hull Material: Steel

Deck Material: Steel

Hull Configuration: Full Displacement

Interior Designer: Neptunas

Engine Information

Engines: 2

Manufacturer: Detroit Diesel

Engine Type: Inboard

Fuel Type: Diesel

PHOTOS

bow



Cabin



IMG_0870b



Dingey



Floor



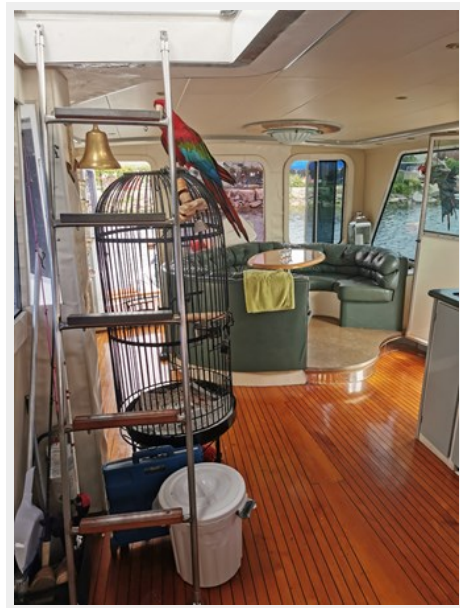
Galley 2



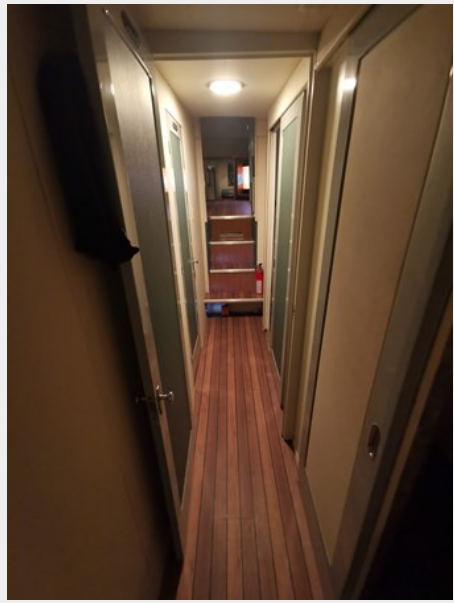
Galley 3



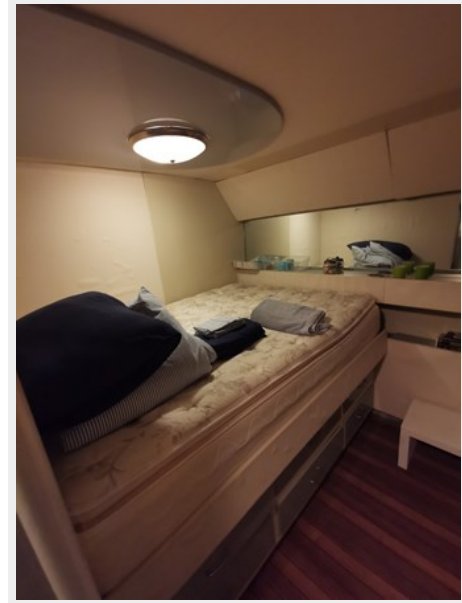
Galley



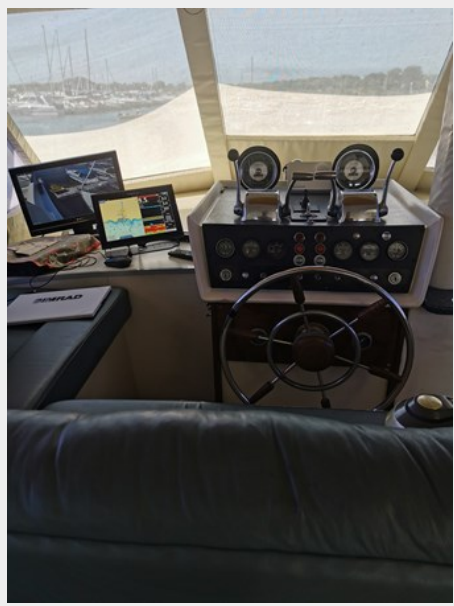
hall



crew



Helm



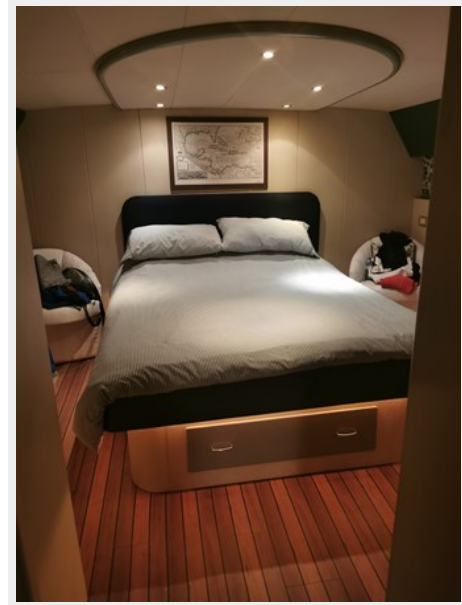
Lights



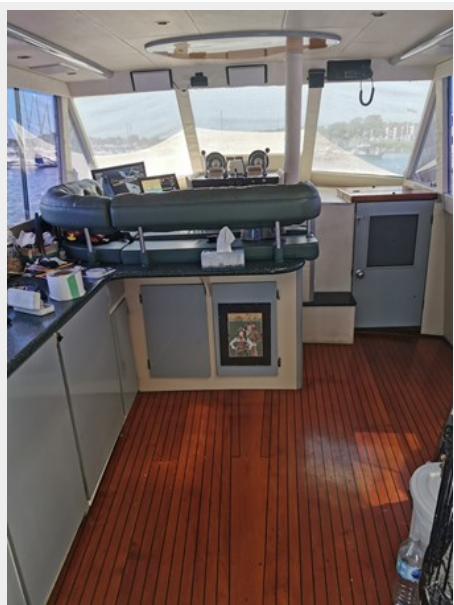
lounge



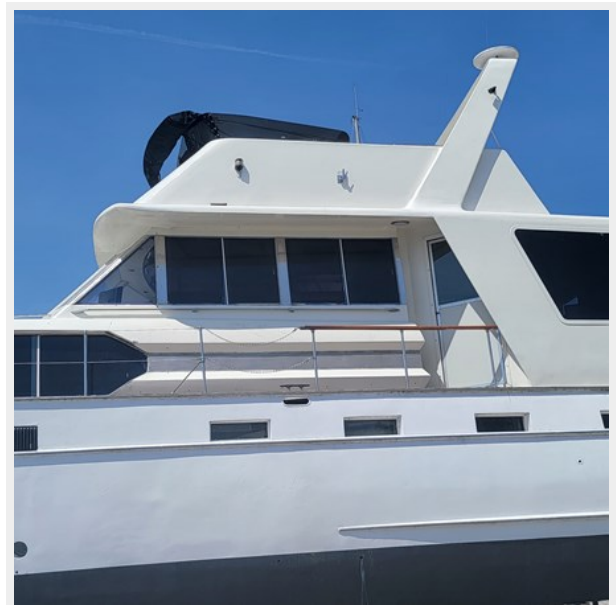
Master



Pilot 2



Port side



Sallon



side



Stairs



Stern

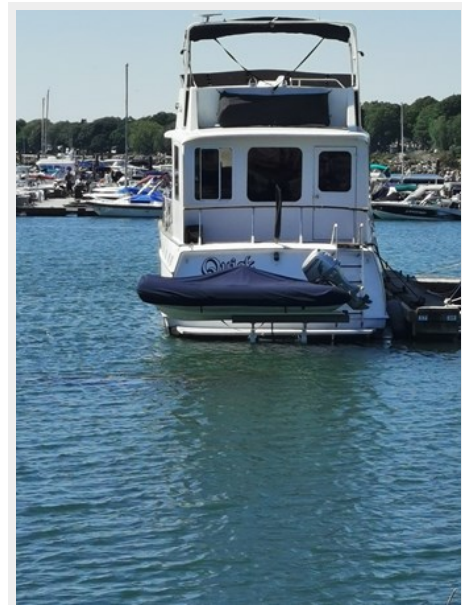
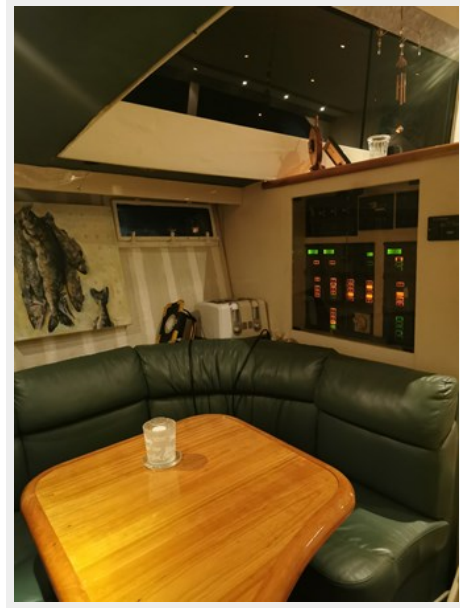


Table 2



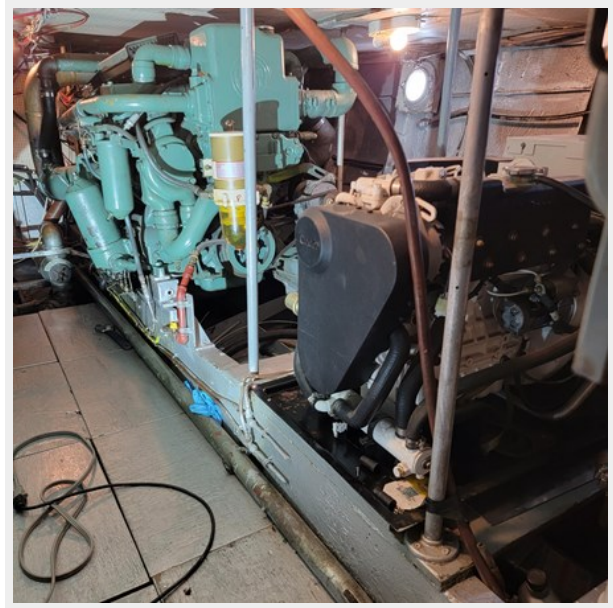
table



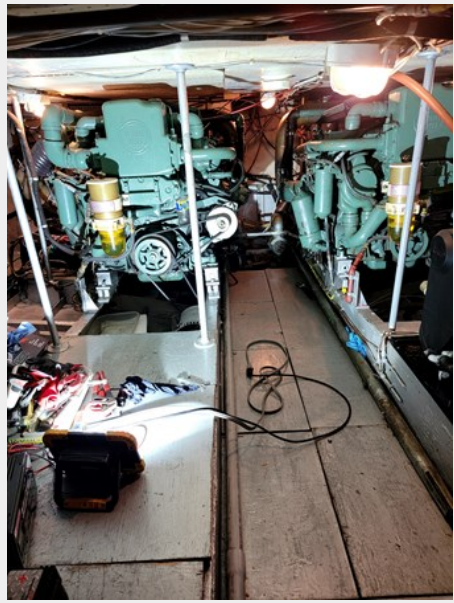
V Berth



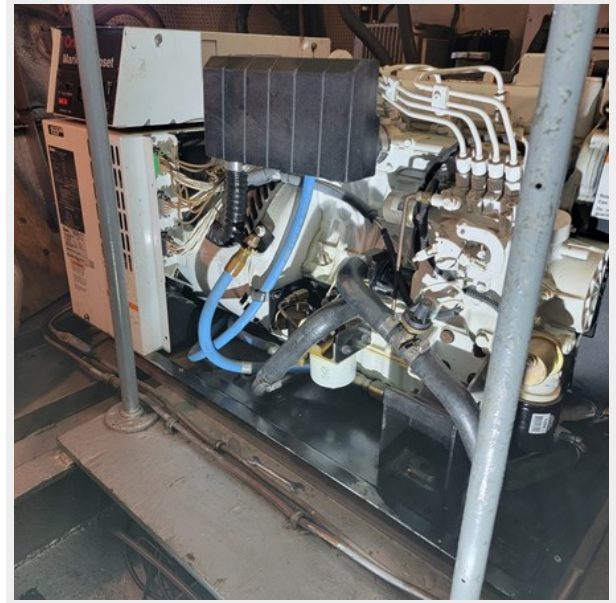
engine 1



Engine 3



Gen 1



CONTACTS

Andrey Shestakov, leading yacht broker of the sales department of Shestakov Yacht Sales Inc. Shestakov Yacht Sales Inc., the official representative of the Miami/Fort Lauderdale FL headquarters.

Contact details

Email: andrey@shestakovyachtsales.com

Web: shestakovyachtsales.com/en/

Telephones

USA: +1(954)274-4435

Office hours

Monday – Saturday: **9:00 - 21:00** EDT

Sunday: **closed**

Address



Harbour Towne Marina, 850 NE 3rd St,
STE 213, Dania, FL 33004