

DOVETAIL — TRUMPY



Builder: TRUMPY

Year Built: 1972

Model: Motor Yacht

Price: \$1,500,000 USD

Location: United States

LOA: 72' (21.95m)

Beam: 18

Cruise Speed: 12 Knots Kts. (14 MPH)

Max Speed: 14 Knots Kts. (16 MPH)

Our experienced yacht broker, Andrey Shestakov, will help you choose and buy a yacht that best suits your needs **Dovetail — TRUMPY** from our catalogue. Presently, at Shestakov Yacht Sales Inc., we have a wide variety of yachts available on our sale's list. We also work in close contact with all the big yacht manufacturers from all over the world.

If you would like to buy a yacht **Dovetail — TRUMPY** or would like help answering any questions concerning purchasing, selling or chartering a yacht, please call **+1(954)274-4435**

TABLE OF CONTENTS

TABLE OF CONTENTS	2
SPECIFICATIONS	3
Overview	3
Basic Information	3
Dimensions	4
Speed, Capacities and Weight	4
Accommodations	4
Hull and Deck Information	4
Engine Information	4
PHOTOS	5
CONTACTS	12
Contact details	12
Telephones	12
Office hours	12
Address	12

SPECIFICATIONS

Overview

DOVETAIL was John Trumpy and Sons contract #446 built in 1972 in Annapolis, Maryland as one of the last of the popular “Houseboat” model. Originally named GERIFAY, she was Committee Boat for the 1974 Americas Cup Races in Newport, RI.

DOVETAIL has an enclosed pilothouse and a large full-width galley on the main deck. Her overall length is 72' / 21.95m, with a beam of 18' / 5.49m and a draft of 4'5" / 1.35m. Her hull is double planked mahogany with marine grade 5200 between the 3/8 inch inner and 3/4-inch outer mahogany planks. Impeccably well maintained, she is a classic yacht with fully modernized systems. Fully refit / restored including new hull painted in 2019 with ongoing maintenance and upgrades - including new teak decks laid on the aft deck in 2023 replacing the carpeted non-skid.

On the main deck forward of the galley is the wheelhouse with a helm bench, an opening center window and port and starboard wing doors. A forward companionway leads from the wheelhouse down to the lower deck crew quarters, laundry area, abundant storage, and adjacent easily accessible engine room. DOVETAIL is propelled by twin 650 hp Cummins Diesel engines (rebuilt in 2018.) Twin 25KW Northern Lights generators run the systems, in addition to Naiad 254 hydraulic stabilizers, hydraulic bow thruster, Spectra water-maker, Cruisair Air Conditioning, windlass, plus much more.

Aft of the galley is the spacious and inviting salon with mahogany furnishings and cabinetry, a day-head and original roll-down windows for the option of fresh air. A pass-through window from the galley makes service efficient. The salon opens to the aft deck which can be enjoyed “al fresco” to take in the fresh sea-breeze, or fully enclosed with isinglass and air conditioning. The teak-decked (2023) aft deck has a wet-bar, buffet, and icemaker for enjoying sunset cocktails.

From the salon, stairs lead down to the guest accommodations that includes the full beam owner’s stateroom aft, furnished with a centerline queen bed and ensuite head. Moving forward on the lower deck are two identical guest cabins port and starboard each with 2 twin beds & an ensuite head.

DOVETAIL is an absolute must-see for Trumpy or classic-yacht lovers!

Basic Information

Category: Motor Yacht

Model Year: 1972

Year Built: 1972

Country: United States

Dimensions

LOA: 72' (21.95m)

Beam: 18

Speed, Capacities and Weight

Cruise Speed: 12 Knots Kts. (14 MPH)

Max Speed: 14 Knots Kts. (16 MPH)

Water Capacity: 570 Gallons

Holding Tank: 35 Gal Gallons

Fuel Capacity: 1500 Gal Gallons

Accommodations

Total Cabins: 3

Total Heads: 5

Hull and Deck Information

Hull Material: Wood

Engine Information

Engines: 2

Manufacturer: Cummins

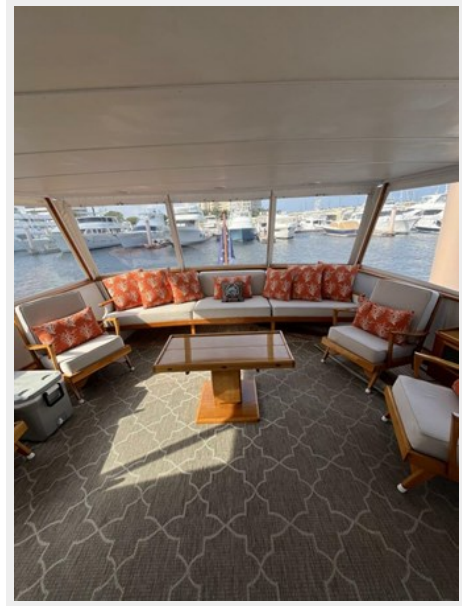
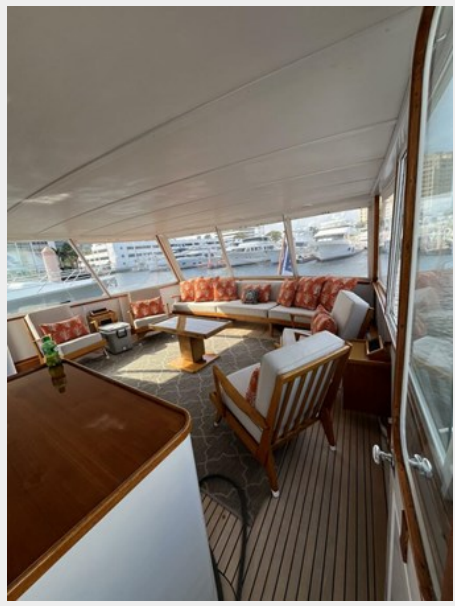
Engine Type: Inboard

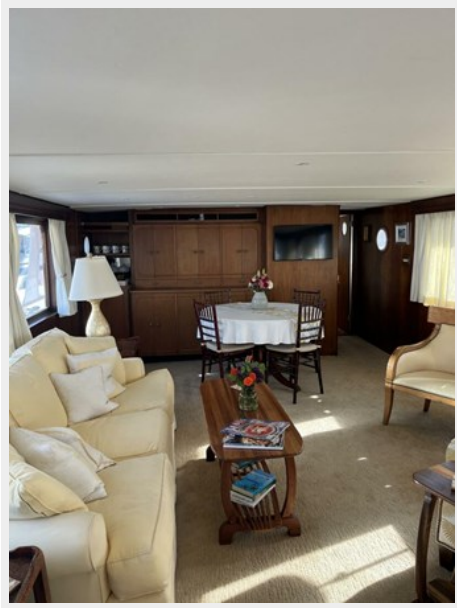
Fuel Type: Diesel

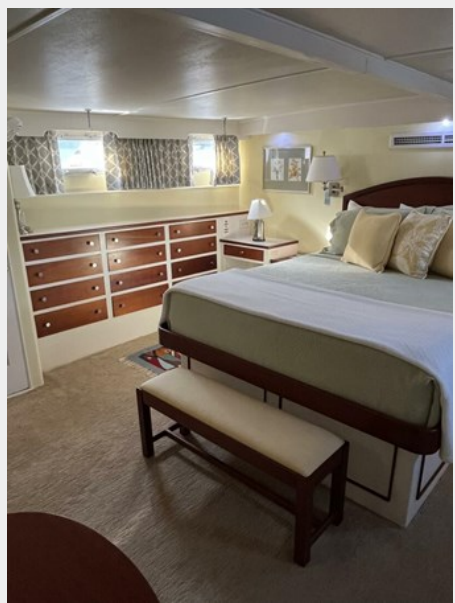
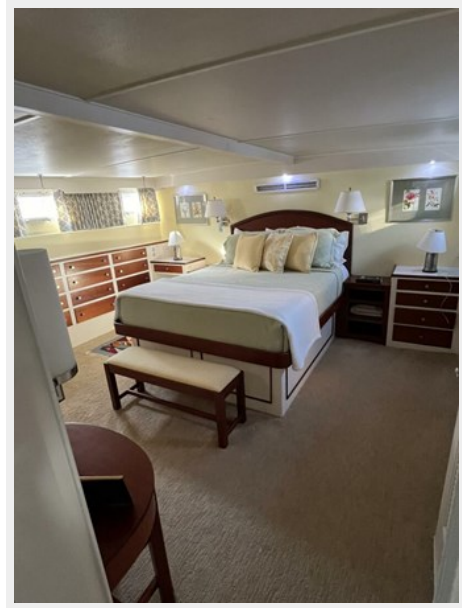
PHOTOS

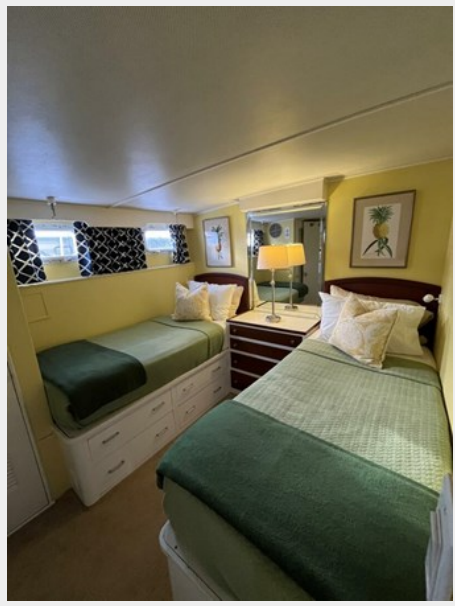












CONTACTS

Andrey Shestakov, leading yacht broker of the sales department of Shestakov Yacht Sales Inc. Shestakov Yacht Sales Inc., the official representative of the Miami/Fort Lauderdale FL headquarters.

Contact details

Email: andrey@shestakovyachtsales.com

Web: shestakovyachtsales.com/en/

Telephones

USA: +1(954)274-4435

Office hours

Monday – Saturday: **9:00 - 21:00** EDT

Sunday: **closed**

Address



Harbour Towne Marina, 850 NE 3rd St,
STE 213, Dania, FL 33004