

## DALOLI — HEESEN YACHTS



**Builder:** HEESEN YACHTS

**Year Built:** 1996

**Model:** Motor Yacht

**Price:** PRICE ON APPLICATION

**Location:** Greece

**LOA:** 143' 3" (43.65m)

**Beam:** 27.88

**Max Draft:** 9' 3" (2.8m)

**Cruise Speed:** 14 Knots Kts. (16 MPH)

**Max Speed:** 20 Knots Kts. (23 MPH)

Our experienced yacht broker, Andrey Shestakov, will help you choose and buy a yacht that best suits your needs **DALOLI — HEESEN YACHTS** from our catalogue. Presently, at Shestakov Yacht Sales Inc., we have a wide variety of yachts available on our sale's list. We also work in close contact with all the big yacht manufacturers from all over the world.

If you would like to buy a yacht **DALOLI — HEESEN YACHTS** or would like help answering any questions concerning purchasing, selling or chartering a yacht, please call **+1(954)274-4435**

---

# TABLE OF CONTENTS

---

TABLE OF CONTENTS	2
SPECIFICATIONS	3
Basic Information	3
Dimensions	3
Speed, Capacities and Weight	3
Accommodations	3
Hull and Deck Information	4
Engine Information	4
PHOTOS	5
CONTACTS	11
Contact details	11
Telephones	11
Office hours	11
Address	11

---

# SPECIFICATIONS

---

## Basic Information

---

**Category:** Motor Yacht

**Model Year:** 1996

**Year Built:** 1996

**Refit Type:** Total

**Country:** Greece

## Dimensions

---

**LOA:** 143' 3" (43.65mm)

**Beam:** 27.88

**Max Draft:** 9' 3" (2.8mm)

## Speed, Capacities and Weight

---

**Cruise Speed:** 14 Knots Kts. (16 MPH)

**Cruise Speed Range:** 2600

**Max Speed:** 20 Knots Kts. (23 MPH)

**Gross Tonnage:** 409 Pounds

**Water Capacity:** 15000 Gallons

**Fuel Capacity:** 15321.98 Gal Gallons

## Accommodations

---

**Total Cabins:** 5

**Total Berths:** 10

**Sleeps:** 10

**Total Heads:** 5

**Crew Cabin:** 6

**Crew Berths:** 6

**Crew Heads:** 2

---

## Hull and Deck Information

---

**Hull Material:** Aluminum

**Deck Material:** Teak

**Hull Configuration:** Semi-Displacement

**Hull Color:** Beige-white

**Hull Designer:** Heesen Yachts

**Exterior Designer:** Diaship

**Interior Designer:** Art-Line Interiors

---

## Engine Information

---

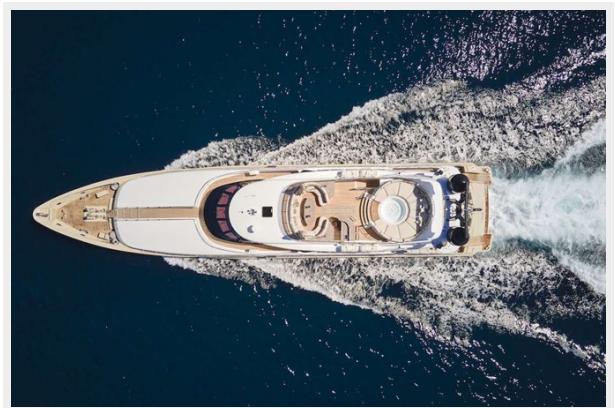
**Engines:** 2

**Manufacturer:** MTU

**Engine Type:** Inboard

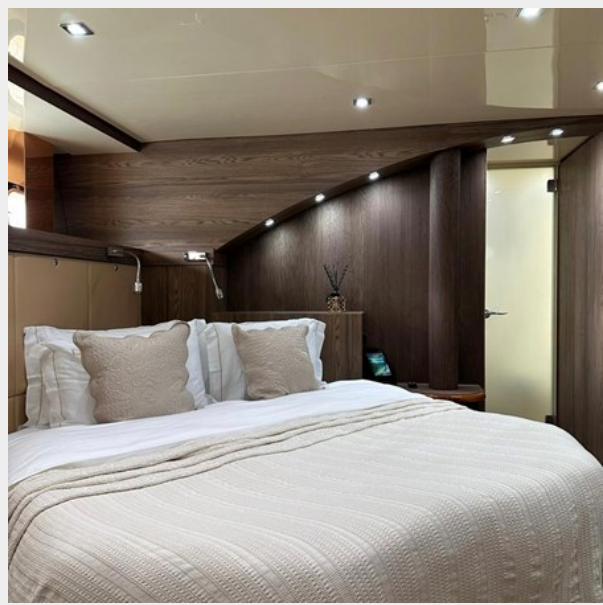
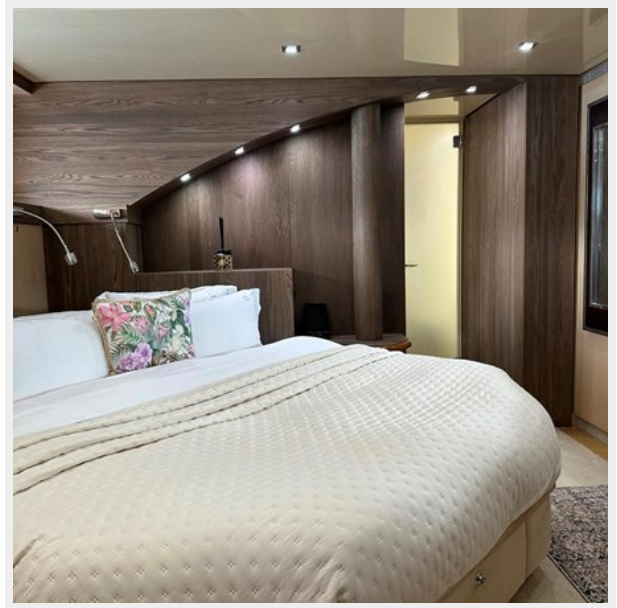
**Fuel Type:** Diesel

# PHOTOS

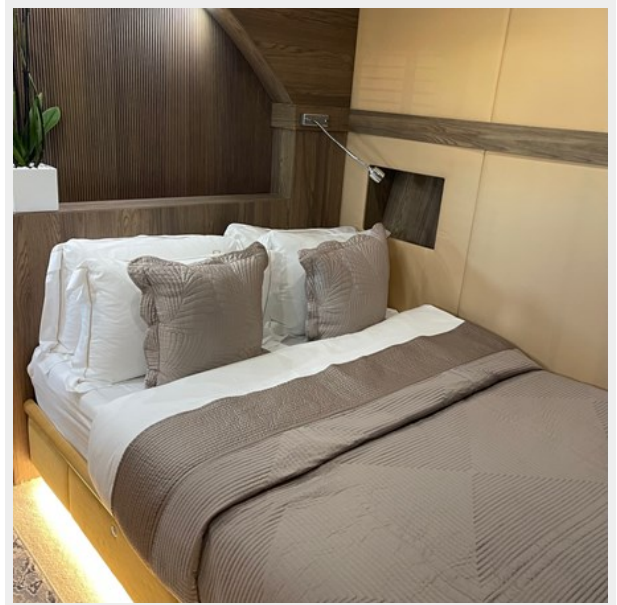
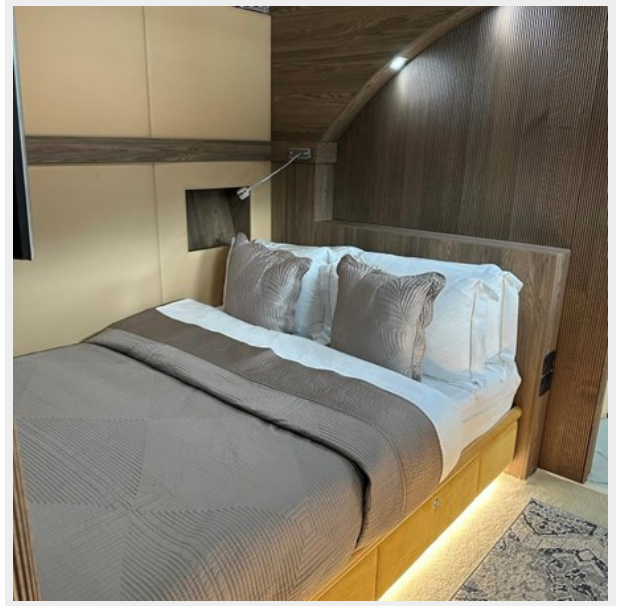














# CONTACTS

---

Andrey Shestakov, leading yacht broker of the sales department of Shestakov Yacht Sales Inc. Shestakov Yacht Sales Inc., the official representative of the Miami/Fort Lauderdale FL headquarters.

## Contact details

---

Email: [andrey@shestakovyachtsales.com](mailto:andrey@shestakovyachtsales.com)

Web: [shestakovyachtsales.com/en/](http://shestakovyachtsales.com/en/)

## Telephones

---

USA: +1(954)274-4435

## Office hours

---

Monday – Saturday: **9:00 - 21:00** EDT

Sunday: **closed**

## Address

---



Harbour Towne Marina, 850 NE 3rd St,  
STE 213, Dania, FL 33004