

## LE BEAU REGARD V — SEA RAY



**Builder:** SEA RAY

**Year Built:** 2013

**Model:** cruiser

**Price:** \$600,820 USD

**Location:** Canada

**LOA:** 47' 3" (14.4mm)

**Beam:** 14

**Min Draft:** 4' (1.22mm)

**Cruise Speed:** 27 Knots Kts. (31 MPH)

**Max Speed:** 35 Knots Kts. (40 MPH)

Our experienced yacht broker, Andrey Shestakov, will help you choose and buy a yacht that best suits your needs **Le Beau Regard V — SEA RAY** from our catalogue. Presently, at Shestakov Yacht Sales Inc., we have a wide variety of yachts available on our sale's list. We also work in close contact with all the big yacht manufacturers from all over the world.

If you would like to buy a yacht **Le Beau Regard V — SEA RAY** or would like help answering any questions concerning purchasing, selling or chartering a yacht, please call **+1(954)274-4435**

# TABLE OF CONTENTS

TABLE OF CONTENTS	2
SPECIFICATIONS	5
Basic Information	5
Dimensions	5
Speed, Capacities and Weight	5
Accommodations	5
Hull and Deck Information	5
Engine Information	5
PHOTOS	6
Yatch 2 - 1	6
Yatch 2 - 2	6
Yatch 2 - 4	6
Yatch 2 - 3	6
Yatch 2 - 5	6
Yatch 2 - 6	6
Yatch 2 - 7	7
Yatch 2 - 8	7
Yatch 2 - 9	7
Yatch 2 - 10	7
Yatch 2 - 11	7
Yatch 2 - 12	7
Yatch 2 - 13	8
Yatch 2 - 14	8
Yatch 2 - 15	8
Yatch 2 - 16	8
Yatch 2 - 17	8
Yatch 2 - 18	8
Yatch 2 - 19	9

Yatch 2 - 20	9
Yatch 2 - 21	9
Yatch 2 - 22	9
Yatch 2 - 23	9
Yatch 2 - 24	9
Yatch 2 - 25	10
Yatch 2 - 26	10
Yatch 2 - 27	10
Yatch 2 - 28	10
Yatch 2 - 29	10
Yatch 2 - 30	10
Yatch 2 - 32	11
Yatch 2 - 31	11
Yatch 2 - 33	11
Yatch 2 - 34	11
Yatch 2 - 35	11
Yatch 2 - 36	11
Yatch 2 - 37	12
Yatch 2 - 38	12
Yatch 2 - 39	12
Yatch 2 - 40	12
Yatch 2 - 42	12
Yatch 2 - 41	12
Yatch 2 - 44	13
Yatch 2 - 43	13
Yatch 2 - 45	13
Yatch 2 - 46	13
IMG-2768	14
IMG-2767	14

---

IMG-2761	14
sr	14
IMG-2760	15
IMG-2762	15
CONTACTS	16
Contact details	16
Telephones	16
Office hours	16
Address	16

---

# SPECIFICATIONS

---

## Basic Information

---

**Category:** cruiser

**Sub Category:** Express

**Model Year:** 2013

**Year Built:** 2013

**Country:** Canada

## Dimensions

---

**LOA:** 47' 3" (14.4mm)

**Beam:** 14

**Min Draft:** 4' (1.22mm)

## Speed, Capacities and Weight

---

**Cruise Speed:** 27 Knots Kts. (31 MPH)

**Max Speed:** 35 Knots Kts. (40 MPH)

## Accommodations

---

**Total Cabins:** 2

## Hull and Deck Information

---

**Hull Material:** Fiberglass

## Engine Information

---

**Engines:** 2

**Manufacturer:** Cummins

**Engine Type:** Inboard

**Fuel Type:** Diesel

# PHOTOS

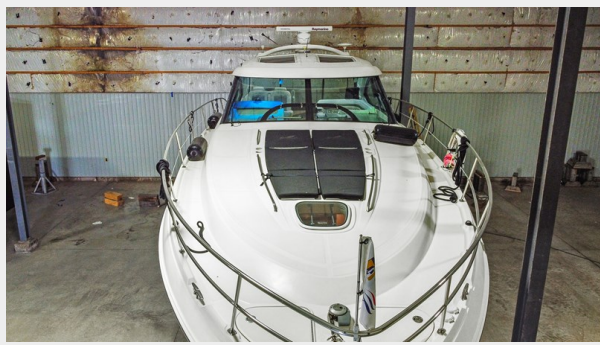
**Yatch 2 - 1**



**Yatch 2 - 2**



**Yatch 2 - 3**



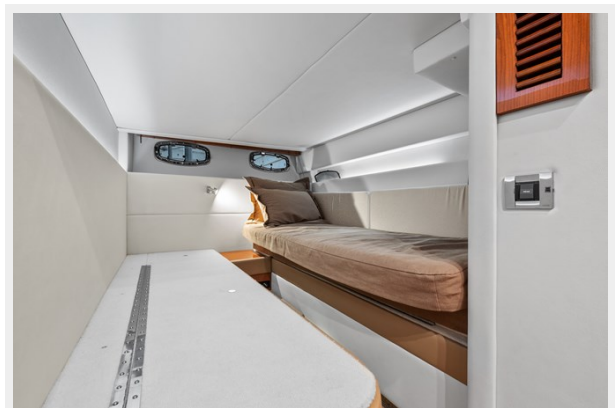
**Yatch 2 - 4**



**Yatch 2 - 5**



**Yatch 2 - 6**



**Yatch 2 - 7**



**Yatch 2 - 8**



**Yatch 2 - 9**



**Yatch 2 - 10**



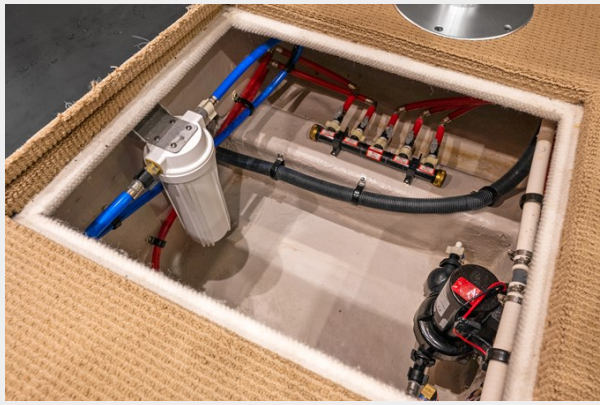
**Yatch 2 - 11**



**Yatch 2 - 12**



**Yatch 2 - 13**



**Yatch 2 - 14**



**Yatch 2 - 15**



**Yatch 2 - 16**



**Yatch 2 - 17**



**Yatch 2 - 18**





**Yatch 2 - 19**



**Yatch 2 - 20**



**Yatch 2 - 21**



**Yatch 2 - 22**



**Yatch 2 - 23**



**Yatch 2 - 24**



**Yatch 2 - 25**



**Yatch 2 - 26**



**Yatch 2 - 27**



**Yatch 2 - 28**



**Yatch 2 - 29**



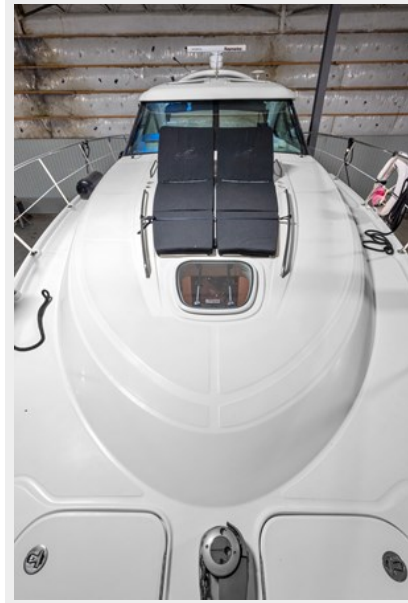
**Yatch 2 - 30**



**Yatch 2 - 31**



**Yatch 2 - 32**



**Yatch 2 - 33**



**Yatch 2 - 34**



**Yatch 2 - 35**



**Yatch 2 - 36**



**Yatch 2 - 37**



**Yatch 2 - 38**



**Yatch 2 - 39**



**Yatch 2 - 40**



**Yatch 2 - 42**



**Yatch 2 - 41**



**Yatch 2 - 43**



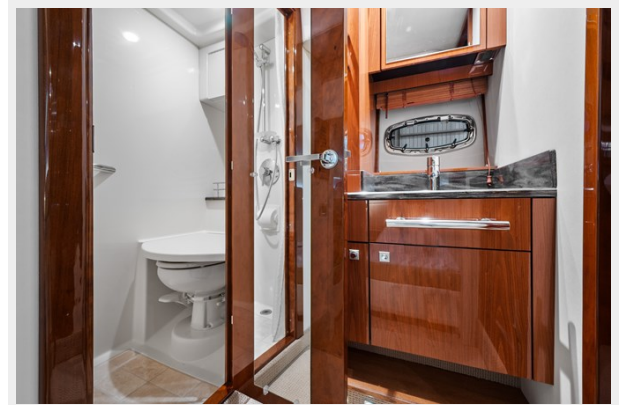
**Yatch 2 - 44**



**Yatch 2 - 45**



**Yatch 2 - 46**



IMG-2768



IMG-2767



IMG-2761

sr



IMG-2760



IMG-2762



# CONTACTS

---

Andrey Shestakov, leading yacht broker of the sales department of Shestakov Yacht Sales Inc. Shestakov Yacht Sales Inc., the official representative of the Miami/Fort Lauderdale FL headquarters.

## Contact details

---

Email: [andrey@shestakovyachtsales.com](mailto:andrey@shestakovyachtsales.com)

Web: [shestakovyachtsales.com/en/](http://shestakovyachtsales.com/en/)

## Telephones

---

USA: +1(954)274-4435

## Office hours

---

Monday – Saturday: **9:00 - 21:00** EDT

Sunday: **closed**

## Address

---



Harbour Towne Marina, 850 NE 3rd St,  
STE 213, Dania, FL 33004