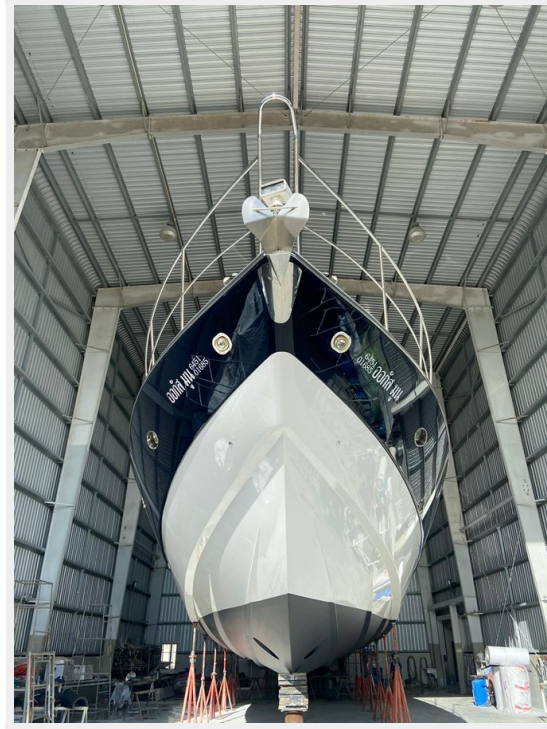


AUGUST MOON — SUNSEEKER



Builder: SUNSEEKER

Year Built: 2000

Model: cruiser

Price: PRICE ON APPLICATION

Location: Thailand

LOA: 81' 6" (24.84mm)

Beam: 19.41

Min Draft: 4' 11" (1.5mm)

Cruise Speed: 35 Knots Kts. (40 MPH)

Max Speed: 42 Knots Kts. (48 MPH)

Our experienced yacht broker, Andrey Shestakov, will help you choose and buy a yacht that best suits your needs **AUGUST MOON — SUNSEEKER** from our catalogue. Presently, at Shestakov Yacht Sales Inc., we have a wide variety of yachts available on our sale's list. We also work in close contact with all the big yacht manufacturers from all over the world.

If you would like to buy a yacht **AUGUST MOON — SUNSEEKER** or would like help answering any questions concerning purchasing, selling or chartering a yacht, please call **+1(954)274-4435**

TABLE OF CONTENTS

TABLE OF CONTENTS	2
SPECIFICATIONS	4
Overview	4
Basic Information	4
Dimensions	4
Speed, Capacities and Weight	4
Accommodations	4
Hull and Deck Information	4
Engine Information	5
PHOTOS	6
PHOTO-2022-10-15-18-17-10	6
PHOTO-2022-10-15-18-17-12	6
PHOTO-2022-10-15-18-17-12(1)	6
PHOTO-2022-10-15-18-17-12(2)	6
PHOTO-2022-10-15-18-17-13	7
PHOTO-2022-10-15-18-17-13(1)	7
PHOTO-2022-10-15-18-17-14	7
PHOTO-2022-10-15-18-17-14(1)	7
PHOTO-2022-10-15-18-17-15	7
PHOTO-2022-10-15-18-17-15(1)	7
PHOTO-2022-10-15-18-17-16	8
PHOTO-2022-10-15-18-17-16(1)	8
PHOTO-2022-10-15-18-17-17	8
PHOTO-2022-10-15-18-17-18	8
PHOTO-2022-10-15-18-17-18(1)	8
PHOTO-2022-10-15-18-17-19	8
PHOTO-2022-10-15-18-17-19(1)	9
PHOTO-2022-10-15-18-17-19(2)	9

PHOTO-2022-10-15-18-17-20	9
PHOTO-2022-10-15-18-17-20(1)	9
PHOTO-2022-10-15-18-17-20(2)	9
PHOTO-2022-10-15-18-17-21	9
PHOTO-2022-10-15-18-17-21(1)	10
PHOTO-2022-10-15-18-17-22	10
PHOTO-2022-10-15-18-17-23	10
PHOTO-2022-10-15-18-17-23(1)	10
PHOTO-2022-10-15-18-17-24	10
PHOTO-2022-10-15-18-17-24(1)	10
PHOTO-2022-10-15-18-18-01	11
PHOTO-2022-10-15-18-18-01(1)	11
PHOTO-2022-10-15-18-18-02	11
PHOTO-2022-10-15-18-18-02(1)	11
PHOTO-2022-10-15-18-18-03	11
PHOTO-2022-10-15-18-18-03(1)	11
PHOTO-2022-10-15-18-18-04	12
PHOTO-2022-10-15-18-18-04(1)	12
PHOTO-2022-10-15-18-18-05	12
PHOTO-2022-10-15-18-18-05(1)	12
PHOTO-2022-10-15-18-18-06	13
PHOTO-2022-10-15-18-18-07	13
CONTACTS	14
Contact details	14
Telephones	14
Office hours	14
Address	14

SPECIFICATIONS

Overview

N/A

Basic Information

Category: cruiser

Sub Category: Express

Model Year: 2000

Year Built: 2000

Country: Thailand

Dimensions

LOA: 81' 6" (24.84mm)

Beam: 19.41

Min Draft: 4' 11" (1.5mm)

Speed, Capacities and Weight

Cruise Speed: 35 Knots Kts. (40 MPH)

Max Speed: 42 Knots Kts. (48 MPH)

Accommodations

Total Cabins: 3

Hull and Deck Information

Hull Material: Fiberglass

Engine Information

Engines: 3

Manufacturer: MAN

Engine Type: Inboard

Fuel Type: Diesel

PHOTOS

PHOTO-2022-10-15-18-17-10

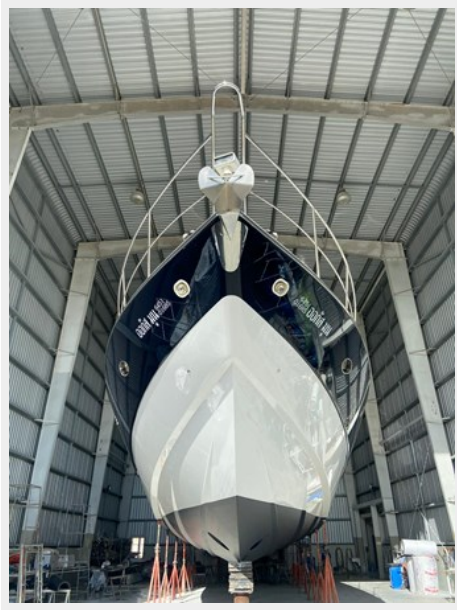


PHOTO-2022-10-15-18-17-12



PHOTO-2022-10-15-18-17-12(1)



PHOTO-2022-10-15-18-17-12(2)



PHOTO-2022-10-15-18-17-13



PHOTO-2022-10-15-18-17-13(1)



PHOTO-2022-10-15-18-17-14



PHOTO-2022-10-15-18-17-14(1)



PHOTO-2022-10-15-18-17-15



PHOTO-2022-10-15-18-17-15(1)



PHOTO-2022-10-15-18-17-16



PHOTO-2022-10-15-18-17-16(1)



PHOTO-2022-10-15-18-17-17



PHOTO-2022-10-15-18-17-18

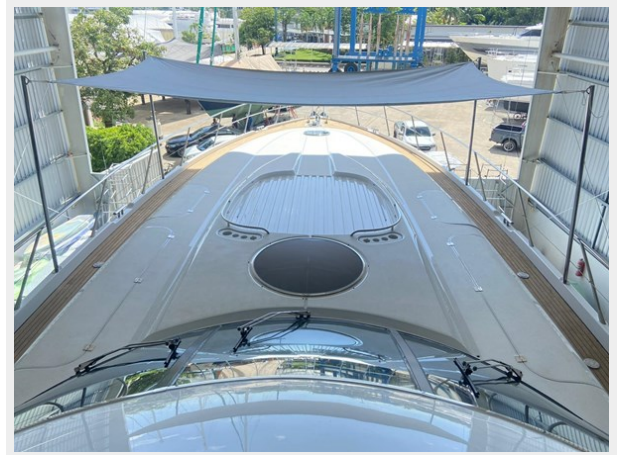


PHOTO-2022-10-15-18-17-18(1)



PHOTO-2022-10-15-18-17-19



PHOTO-2022-10-15-18-17-19(1)



PHOTO-2022-10-15-18-17-19(2)



PHOTO-2022-10-15-18-17-20



PHOTO-2022-10-15-18-17-20(1)



PHOTO-2022-10-15-18-17-20(2)



PHOTO-2022-10-15-18-17-21



PHOTO-2022-10-15-18-17-21(1)



PHOTO-2022-10-15-18-17-22



PHOTO-2022-10-15-18-17-23



PHOTO-2022-10-15-18-17-23(1)



PHOTO-2022-10-15-18-17-24



PHOTO-2022-10-15-18-17-24(1)



PHOTO-2022-10-15-18-18-01



PHOTO-2022-10-15-18-18-01(1)



PHOTO-2022-10-15-18-18-02



PHOTO-2022-10-15-18-18-02(1)



PHOTO-2022-10-15-18-18-03



PHOTO-2022-10-15-18-18-03(1)



PHOTO-2022-10-15-18-18-04



PHOTO-2022-10-15-18-18-04(1)

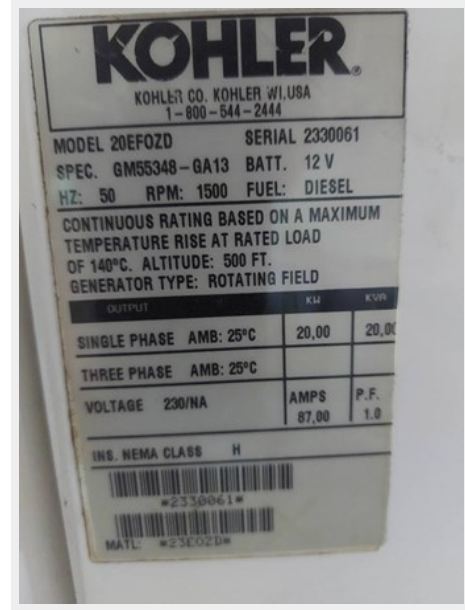


PHOTO-2022-10-15-18-18-05

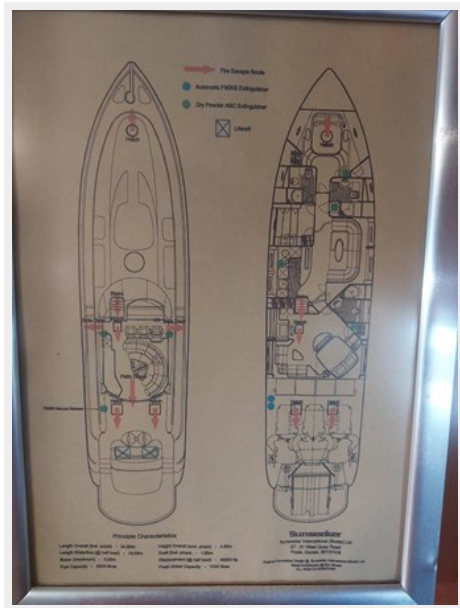


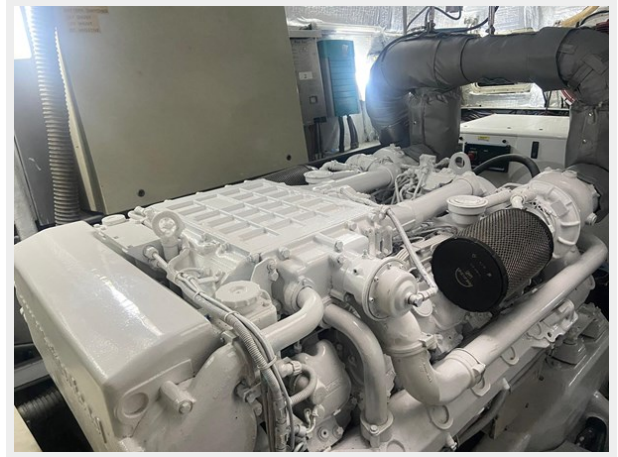
PHOTO-2022-10-15-18-18-05(1)



PHOTO-2022-10-15-18-18-06



PHOTO-2022-10-15-18-18-07



CONTACTS

Andrey Shestakov, leading yacht broker of the sales department of Shestakov Yacht Sales Inc. Shestakov Yacht Sales Inc., the official representative of the Miami/Fort Lauderdale FL headquarters.

Contact details

Email: andrey@shestakovyachtsales.com

Web: shestakovyachtsales.com/en/

Telephones

USA: +1(954)274-4435

Office hours

Monday – Saturday: **9:00 - 21:00** EDT

Sunday: **closed**

Address



Harbour Towne Marina, 850 NE 3rd St,
STE 213, Dania, FL 33004