

MAISIE ROSE — CUSTOM BUILT



Builder: CUSTOM BUILT

Year Built: 1984

Model: Cruising Ketch

Price: PRICE ON APPLICATION

Location: Grenada

LOA: 63' (19.2mm)

Beam: 14

Cruise Speed: 7 Knots Kts. (8 MPH)

Our experienced yacht broker, Andrey Shestakov, will help you choose and buy a yacht that best suits your needs **Maisie Rose — CUSTOM BUILT** from our catalogue. Presently, at Shestakov Yacht Sales Inc., we have a wide variety of yachts available on our sale's list. We also work in close contact with all the big yacht manufacturers from all over the world.

If you would like to buy a yacht **Maisie Rose — CUSTOM BUILT** or would like help answering any questions concerning purchasing, selling or chartering a yacht, please call **+1(954)274-4435**

TABLE OF CONTENTS

TABLE OF CONTENTS	2
SPECIFICATIONS	3
Overview	3
Basic Information	3
Dimensions	3
Speed, Capacities and Weight	3
Accommodations	3
Hull and Deck Information	3
Engine Information	4
PHOTOS	5
CONTACTS	15
Contact details	15
Telephones	15
Office hours	15
Address	15

SPECIFICATIONS

Overview

Custom Steel Ketch by Kuipper NV Holland Welcome to Masie Rose! A unique pilot house ketch. Plenty of room on deck to enjoy the sunsets and cozy in the pilot house to get out of the weather. A roomy galley below deck is a welcome space for any chef and the double sink makes it even more practical. The U-shape couch is has overstuffed comfort for lounging or entertaining. The butterfly hatch in the saloon has a double helix system for quick opening and closing - really cool! The two cabins are outfitted with two bunks each to maximize crew quarters. There is no fancy owner's cabin on this boat. It is a classic steel hull cruising yacht that can take you to the Caribbean cruising to high latitude exploration!

Basic Information

Category: Cruising Ketch

Model Year: 1984

Year Built: 1984

Country: Grenada

Dimensions

LOA: 63' (19.2mm)

Beam: 14

Speed, Capacities and Weight

Cruise Speed: 7 Knots Kts. (8 MPH)

Water Capacity: 3500 Gallons

Holding Tank: 396.26 Gal Gallons

Fuel Capacity: 1188.77 Gal Gallons

Accommodations

Total Cabins: 2

Total Heads: 2

Hull and Deck Information

Hull Material: Steel

Engine Information

Engines: 1

Manufacturer: Lehman

Engine Type: Inboard

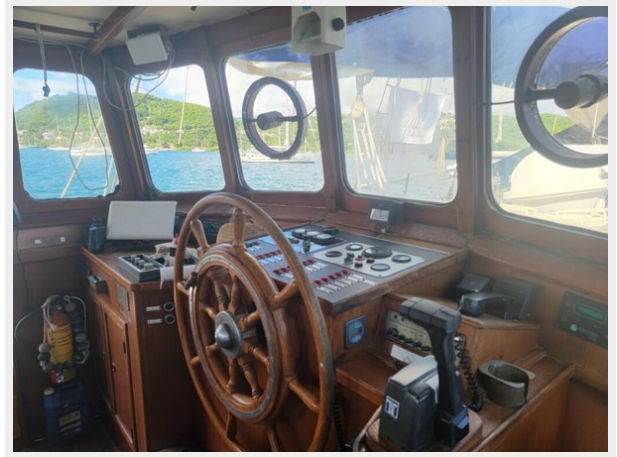
Fuel Type: Diesel

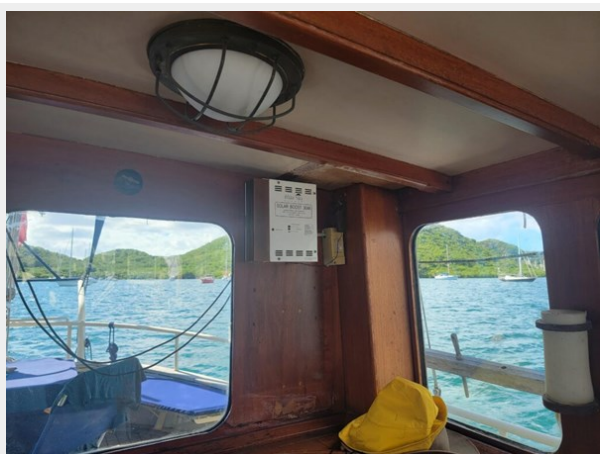
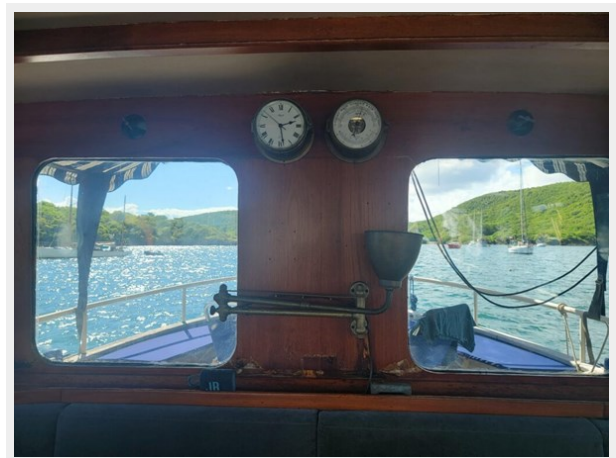
PHOTOS



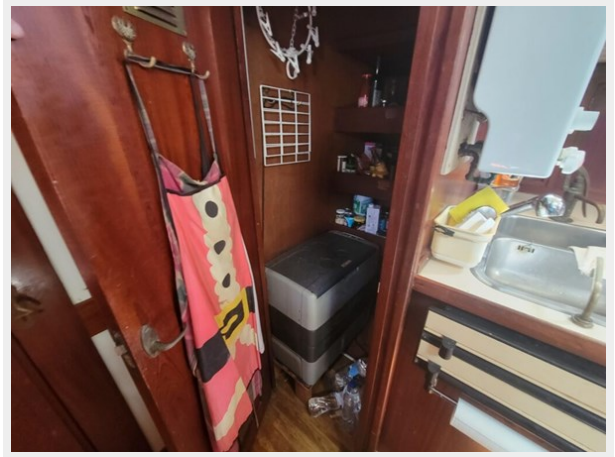


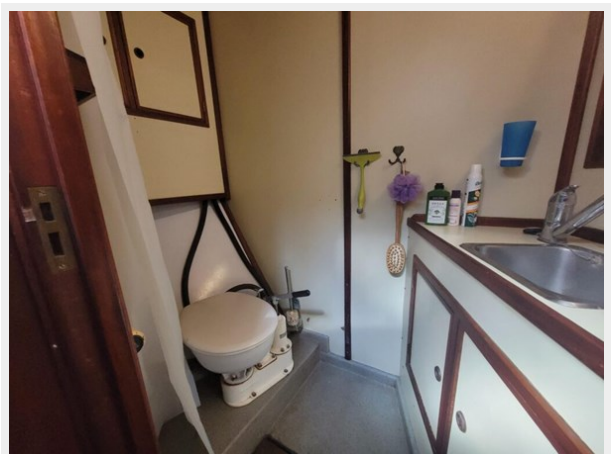
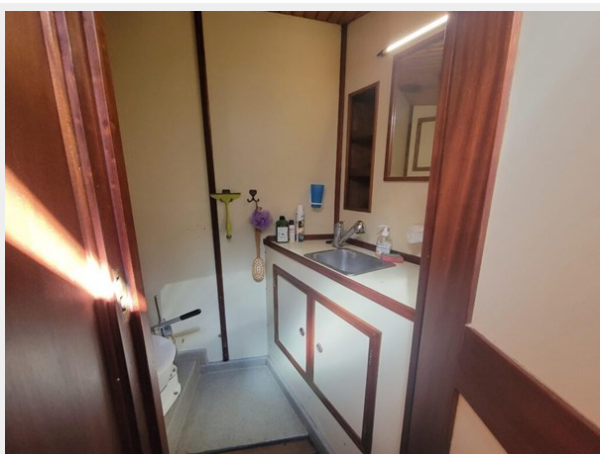
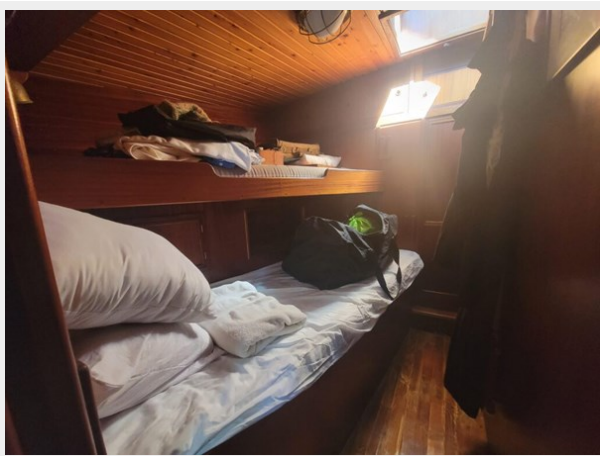
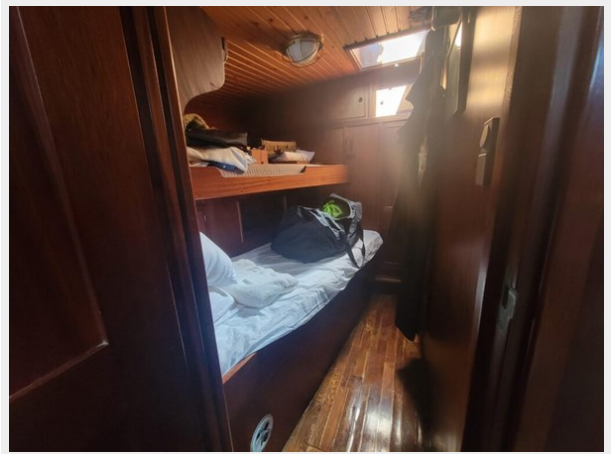
















CONTACTS

Andrey Shestakov, leading yacht broker of the sales department of Shestakov Yacht Sales Inc. Shestakov Yacht Sales Inc., the official representative of the Miami/Fort Lauderdale FL headquarters.

Contact details

Email: andrey@shestakovyachtsales.com

Web: shestakovyachtsales.com/en/

Telephones

USA: +1(954)274-4435

Office hours

Monday – Saturday: **9:00 - 21:00** EDT

Sunday: **closed**

Address



Harbour Towne Marina, 850 NE 3rd St,
STE 213, Dania, FL 33004