

## FELIX — CUSTOM



**Builder:** CUSTOM

**Year Built:** 2012

**Model:** Cruising or Racing Sailboat

**Price:** \$125,000 USD

**Location:** United States

**LOA:** 37' (11.28mm)

**Beam:** 14

**Min Draft:** 3' (0.91mm)

**Max Draft:** 10' (3.05mm)

Our experienced yacht broker, Andrey Shestakov, will help you choose and buy a yacht that best suits your needs **Felix — CUSTOM** from our catalogue. Presently, at Shestakov Yacht Sales Inc., we have a wide variety of yachts available on our sale's list. We also work in close contact with all the big yacht manufacturers from all over the world.

If you would like to buy a yacht **Felix — CUSTOM** or would like help answering any questions concerning purchasing, selling or chartering a yacht, please call **+1(954)274-4435**

# TABLE OF CONTENTS

---

TABLE OF CONTENTS	2
SPECIFICATIONS	5
Overview	5
Basic Information	5
Dimensions	5
Accommodations	5
Hull and Deck Information	5
Engine Information	6
PHOTOS	7
1_2800293_1002_felix_cat	7
2_2800293_1003_felix_cat	7
3_2800293_1004_felix_port	7
4_2800293_1005_felix_port	7
6_2800293_1008_felix_bow	7
5_2800293_1006_felix_port	7
8_2800293_1012_felix_stern	7
7_2800293_1010_felix_decks	7
9_2800293_1014_felix	8
10_2800293_1015_felix_cockpit	8
11_2800293_1016_felix_cockpit	8
12_2800293_1017_felix_cockpit	8
13_2800293_1019_felix_cabin_top	8
14_2800293_1020_felix_cabin	8
15_2800293_1021_felix_rigging	8
16_2800293_1022_felix_vang	8
17_2800293_1023_felix_mast	9
18_2800293_1024_felix_mast_winch	9
19_2800293_1025_felix_stem	9

---

20_2800293_1026_felix_decks	9
21_2800293_1027_felix_cat_cacin_detail	9
22_2800293_1028_felix_cat_port_side_decks	9
23_2800293_1029_felix_cockpit	9
24_2800293_1030_jib_winch	9
25_2800293_1031_mainsheet_winch	10
26_2800293_1032_felix_port_jib_winch	10
27_2800293_1033_felix_helm	10
28_2800293_1034_felix_compass	10
29_2800293_1035_felix_main_sheet	10
30_2800293_1036_felix_bench_propulsion_housing	10
32_2800293_1040_felix_main_cabin	10
31_2800293_1039_felix_companionway	10
33_2800293_1041_felix_main_cabin_starboard	11
34_2800293_1042_felix_main_cabin_fwd	11
35_2800293_1043_felix_centerboard_trunk_maststep_detail	11
36_2800293_1044_felix_galley_strboard	11
37_2800293_1045_felix_galley_port	11
38_2800293_1046_felix_fwd_cubby	11
39_2800293_1047_felix_main_cabin_port	11
40_2800293_1048_felix_cat_detail	11
41_2800293_1049_felix_cat_clock	12
42_2800293_1052_felix_ports	12
43_2800293_1054_felix_head_sink	12
44_2800293_1055_felix_head	12
45_2800293_1056_felix_head	12
46_2800293_1058_felix_head	12
47_2800293_1060_felix_hvac	12
48_2800293_1061_felix_hvac_pump	12

---

49_2800293_1065_felix_lazarette	13
50_2800293_1066_felix_steering_gear	13
51_2800293_1068_felix_propulsion	13
52_2800293_1069_felix_hydraulic_drive	13
53_2800293_1070_felix_engine	13
54_2800293_1071_felix_engine	13
55_2800293_1072_felix_engine	13
56_2800293_1074_felix_hydraulic_drive	13
57_2800293_1076_felix_bilge_pumps	14
58_2800293_1077_felix_bilge_pumps	14
59_2800293_1078_felix_charger	14
60_2800293_1080_felix_mainsail	14
61_2800293_1082_felix_sailing	14
62_2800293_1084_felix_sailing_portside	14
64_2800293_felix_build_1102	15
63_2800293_felix_build_1100	15
66_2800293_felix_build_1104	15
65_2800293_felix_build_1103	15
68_2800293_felix_build_1106	15
67_2800293_felix_build_1105	15
CONTACTS	16
Contact details	16
Telephones	16
Office hours	16
Address	16

---

# SPECIFICATIONS

---

## Overview

---

Felix is a custom 37 foot composite wood catboat. She is based on the designs of early 1900's Barnegat Bay Catboats. But Felix is far from traditional in form and function. She is the largest Catboat known on the East coast and the builder has included some very high-tech design elements like solid Ash & Cedar Composite Hull, Carbon Fiber Rudder, Marconi rig with carbon fiber spars, Technora laminated main & Jib and a hydraulic propulsion system that raises into the hull when not in use. Her very wide 14' beam enables Felix to carry a tall 1000 sq ft sail plan and no ballast while displacing only 8,500 lbs! Felix is an absolute thrill to sail! This combination of stability, speed and comfort is unmatched even by much larger vessels.

Felix is powered by a S3-L to Westerbeke diesel generator which runs the AC components, charges the DC batteries and also powers the hydraulics. She is fitted with Garmin chartplotter, West Marine VHF, hot-cold pressure water, Raritan "Electrosan" with Lavac head & Shower, HVAC system and other modern amenities in a comfortable cabin. Felix has just returned from her 2022 refit including all new paint inside and out. She is ready to go and available to see by appointment in Oriental, NC. Please see all the details including inventory list, photos, video and 360 photos in the full listing below, and check out the great article on Towndocks.net linked below.

## Basic Information

---

**Category:** Cruising or Racing Sailboat

**Model Year:** 2012

**Year Built:** 2012

**Country:** United States

## Dimensions

---

**LOA:** 37' (11.28mm)

**Beam:** 14

**Min Draft:** 3' (0.91mm)

**Max Draft:** 10' (3.05mm)

## Accommodations

---

**Total Cabins:** 1

## Hull and Deck Information

---

**Hull Material:** Composite

---

## Engine Information

---

**Engines:** 1

**Manufacturer:** westerbeke

# PHOTOS

1\_2800293\_1002\_felix\_cat



2\_2800293\_1003\_felix\_cat



3\_2800293\_1004\_felix\_port



4\_2800293\_1005\_felix\_port



5\_2800293\_1006\_felix\_port



6\_2800293\_1008\_felix\_bow



7\_2800293\_1010\_felix\_decks



8\_2800293\_1012\_felix\_stern



9\_2800293\_1014\_felix



10\_2800293\_1015\_felix\_cockpit



11\_2800293\_1016\_felix\_cockpit



12\_2800293\_1017\_felix\_cockpit



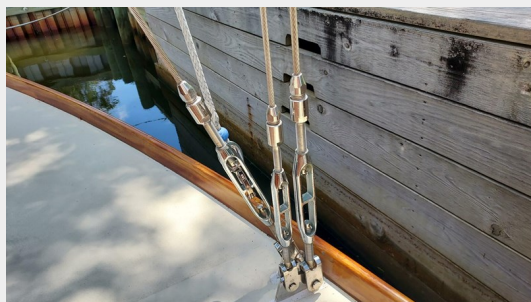
13\_2800293\_1019\_felix\_cabin\_top



14\_2800293\_1020\_felix\_cabin



15\_2800293\_1021\_felix\_rigging

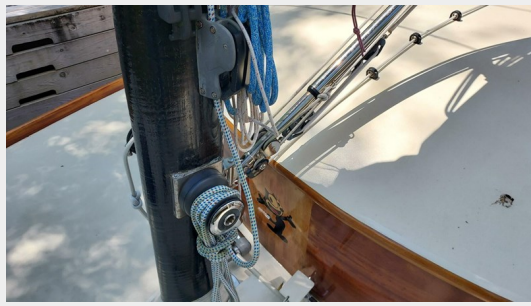


16\_2800293\_1022\_felix\_vang





17\_2800293\_1023\_felix\_mast



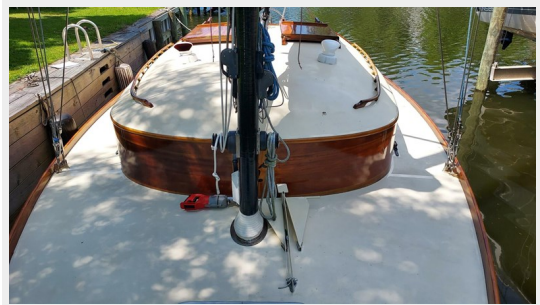
18\_2800293\_1024\_felix\_mast\_winch



19\_2800293\_1025\_felix\_stem



20\_2800293\_1026\_felix\_decks



21\_2800293\_1027\_felix\_cat\_cacin\_detail



22\_2800293\_1028\_felix\_cat\_port\_side\_decks



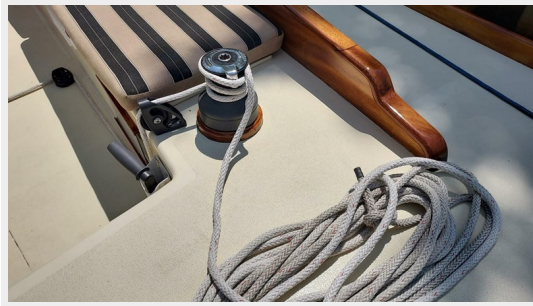
23\_2800293\_1029\_felix\_cockpit



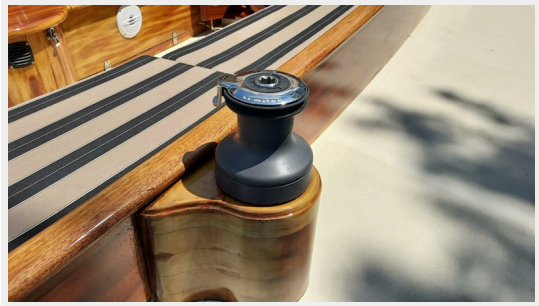
24\_2800293\_1030\_jib\_winch



25\_2800293\_1031\_mainsheet\_winch



26\_2800293\_1032\_felix\_port\_jib\_winch



27\_2800293\_1033\_felix\_helm



28\_2800293\_1034\_felix\_compass



29\_2800293\_1035\_felix\_main\_sheet



30\_2800293\_1036\_felix\_bench\_propulsion\_housing



31\_2800293\_1039\_felix\_companionway



32\_2800293\_1040\_felix\_main\_cabin



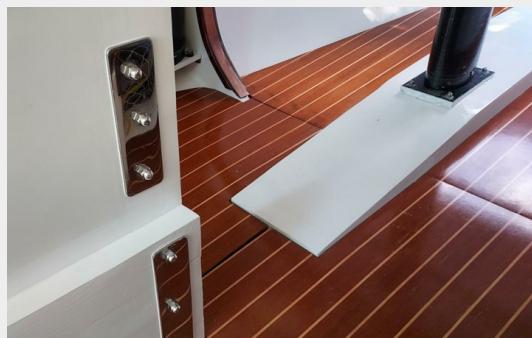
33\_2800293\_1041\_felix\_main\_cabin\_starboard



34\_2800293\_1042\_felix\_main\_cabin\_fwd



35\_2800293\_1043\_felix\_centerboard\_trunk\_maststep\_detail



36\_2800293\_1044\_felix\_galley\_strboard



37\_2800293\_1045\_felix\_galley\_port



38\_2800293\_1046\_felix\_fwd\_cubby



39\_2800293\_1047\_felix\_main\_cabin\_port



40\_2800293\_1048\_felix\_cat\_detail



41\_2800293\_1049\_felix\_cat\_clock



42\_2800293\_1052\_felix\_ports



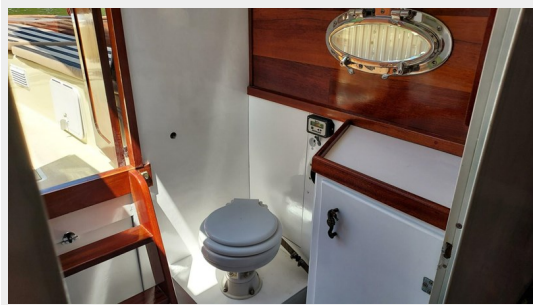
43\_2800293\_1054\_felix\_head\_sink



44\_2800293\_1055\_felix\_head



45\_2800293\_1056\_felix\_head



46\_2800293\_1058\_felix\_head



47\_2800293\_1060\_felix\_hvac



48\_2800293\_1061\_felix\_hvac\_pump



49\_2800293\_1065\_felix\_lazarette



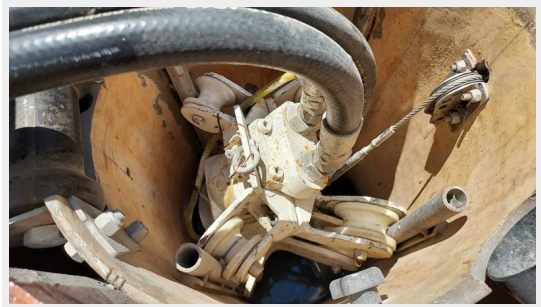
50\_2800293\_1066\_felix\_steering\_gear



51\_2800293\_1068\_felix\_propulsion



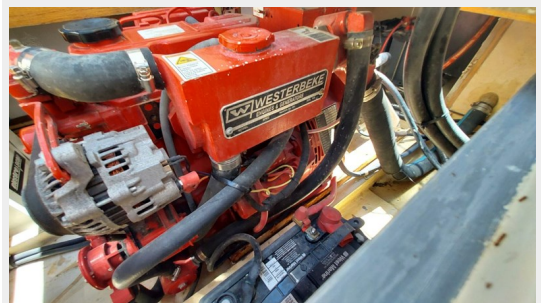
52\_2800293\_1069\_felix\_hydraulic\_drive



53\_2800293\_1070\_felix\_engine



54\_2800293\_1071\_felix\_engine



55\_2800293\_1072\_felix\_engine



56\_2800293\_1074\_felix\_hydraulic\_drive



57\_2800293\_1076\_felix\_bilge\_pumps



58\_2800293\_1077\_felix\_bilge\_pumps



59\_2800293\_1078\_felix\_charger



60\_2800293\_1080\_felix\_mainsail



61\_2800293\_1082\_felix\_sailing



62\_2800293\_1084\_felix\_sailing\_portside



63\_2800293\_felix\_build\_1100



64\_2800293\_felix\_build\_1102



65\_2800293\_felix\_build\_1103



66\_2800293\_felix\_build\_1104



67\_2800293\_felix\_build\_1105



68\_2800293\_felix\_build\_1106



# CONTACTS

---

Andrey Shestakov, leading yacht broker of the sales department of Shestakov Yacht Sales Inc. Shestakov Yacht Sales Inc., the official representative of the Miami/Fort Lauderdale FL headquarters.

## Contact details

---

Email:  
**andrey@shestakovyachtsales.com**

Web: [shestakovyachtsales.com/en/](http://shestakovyachtsales.com/en/)

## Telephones

---

USA: +1(954)274-4435

## Office hours

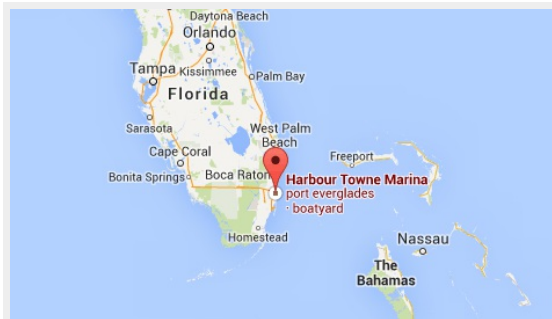
---

Monday – Saturday: **9:00 - 21:00 EDT**

Sunday: **closed**

## Address

---



Harbour Towne Marina, 850 NE 3rd St,  
STE 213, Dania, FL 33004