

HAPPY DAYS — BENETEAU



Builder: BENETEAU

Year Built: 2018

Model: trawler

Price: PRICE ON APPLICATION

Location: United States

LOA: 35' (10.67mm)

Beam: 15.33

Max Draft: 3' 5" (1.04mm)

Cruise Speed: 14 Knots Kts. (16 MPH)

Max Speed: 21 Knots Kts. (24 MPH)

Our experienced yacht broker, Andrey Shestakov, will help you choose and buy a yacht that best suits your needs **Happy Days — BENETEAU** from our catalogue. Presently, at Shestakov Yacht Sales Inc., we have a wide variety of yachts available on our sale's list. We also work in close contact with all the big yacht manufacturers from all over the world.

If you would like to buy a yacht **Happy Days — BENETEAU** or would like help answering any questions concerning purchasing, selling or chartering a yacht, please call **+1(954)274-4435**

TABLE OF CONTENTS

TABLE OF CONTENTS	2
SPECIFICATIONS	5
Overview	5
Basic Information	6
Dimensions	6
Speed, Capacities and Weight	6
Accommodations	6
Hull and Deck Information	6
Engine Information	6
PHOTOS	7
Screen Shot 2023-07-10 at 15.34.25	7
Screen Shot 2023-07-10 at 15.34.31	7
Screen Shot 2023-07-10 at 15.34.36	7
Screen Shot 2023-07-10 at 15.34.51	7
Screen Shot 2023-07-10 at 15.34.56	7
Screen Shot 2023-07-10 at 15.35.06	7
Screen Shot 2023-07-10 at 15.35.18	8
Screen Shot 2023-07-10 at 15.35.32	8
Screen Shot 2023-07-10 at 15.35.39	8
Screen Shot 2023-07-10 at 15.35.44	8
Screen Shot 2023-07-10 at 15.35.51	8
Screen Shot 2023-07-10 at 15.35.56	8
Screen Shot 2023-07-10 at 15.36.11	9
Screen Shot 2023-07-10 at 15.36.05	9
Screen Shot 2023-07-10 at 15.36.16	9
Screen Shot 2023-07-10 at 15.36.23	9
Screen Shot 2023-07-10 at 15.36.28	9
Screen Shot 2023-07-10 at 15.36.34	9

Screen Shot 2023-07-10 at 15.36.44	10
Screen Shot 2023-07-10 at 15.37.26	10
Screen Shot 2023-07-10 at 15.37.32	10
Screen Shot 2023-07-10 at 15.37.39	10
Screen Shot 2023-07-10 at 15.37.51	10
Screen Shot 2023-07-10 at 15.37.45	10
Screen Shot 2023-07-10 at 15.38.01	11
Screen Shot 2023-07-10 at 15.38.06	11
Screen Shot 2023-07-10 at 15.38.12	11
Screen Shot 2023-07-10 at 15.38.21	11
Screen Shot 2023-07-10 at 15.38.32	11
Screen Shot 2023-07-10 at 15.38.26	11
Screen Shot 2023-07-10 at 15.38.41	12
Screen Shot 2023-07-10 at 15.38.46	12
Screen Shot 2023-07-10 at 15.38.51	12
Screen Shot 2023-07-10 at 15.38.57	12
Screen Shot 2023-07-10 at 15.39.04	12
Screen Shot 2023-07-10 at 15.39.12	12
Screen Shot 2023-07-10 at 15.39.23	13
Screen Shot 2023-07-10 at 15.39.18	13
Screen Shot 2023-07-10 at 15.39.31	13
Screen Shot 2023-07-10 at 15.39.39	13
Screen Shot 2023-07-10 at 15.39.55	13
Screen Shot 2023-07-10 at 15.39.48	13
Screen Shot 2023-07-10 at 15.40.08	14
Screen Shot 2023-07-10 at 15.40.16	14
Screen Shot 2023-07-10 at 15.40.40	14
Screen Shot 2023-07-10 at 15.40.27	14
Screen Shot 2023-07-10 at 15.40.47	14

Screen Shot 2023-07-10 at 15.40.57	14
Screen Shot 2023-07-10 at 15.41.10	15
Screen Shot 2023-07-10 at 15.41.04	15
Screen Shot 2023-07-10 at 15.41.16	15
Screen Shot 2023-07-10 at 15.41.23	15
Screen Shot 2023-07-10 at 15.41.38	15
Screen Shot 2023-07-10 at 15.41.32	15
Screen Shot 2023-07-10 at 15.41.43	16
CONTACTS	17
Contact details	17
Telephones	17
Office hours	17
Address	17

SPECIFICATIONS

Overview

Arriving in Elliott Bay Marina July 15th, slip available to take over (with application).

"**Happy Days**" is an excellent example of the very popular Beneteau Swift Trawler 35 (Over 165 hulls built since it's introduction in 2019). Built in France, she is CE-certified for Category B seas, and is just as comfortable being cruised at 7 knots as going 15-16 knots (Top speed is almost 18 knots).

She features a full walk-around deck, with a wider starboard walkway and a pocket door there to get off and on the boat directly to the dock, a davit system aft with an included tender, and a very spacious flybridge.

Features Include:

- **2 cabins** (one queen, one bunk bed) and salon couch converts to another bed for two. **Sleeps 6 total.**
- Features a **single Cummins QSB6.7L (425HP)**. Cruises anywhere from 7 knots to 16 knots. **Just over 230 hours**, very well maintained.
- **Bow and Stern thrusters**, two driving stations
- **Full walkaround deck**, with starboard midship door and lower helm next to it.
- **Air Conditioning and reverse-cycle heating** by CruiseAir
- **Two TVs and KVH Satellite antenna**
- **7.5 Kw Cummins Onan generator** with around 60 hours (fully serviced).
- **Very spacious flybridge** with large seating, helm, bimini and plenty of space aft.
- **Manual davits** aft, **9.5 Foot Tender** (Aluminium bottom), **Torqeedo electric outboard** with 2 batteries

*"No two ways about it: This boat is meant for a cruising couple or family that occasionally has guests on board, and it's an ideal entry-level cruiser for buyers looking to get their feet wet on long trips. Originality is always appreciated, but it's also nice to know you have a winner before it even hits the water." - **Power & Motoryacht***

*"if I reflect on what made the 35 stand out to me, it was indeed its "trawlness." Though the definition of what a trawler is can be subjective, one of the most commonly agreed-on characteristics of a trawler is that its form follows function. Evolving from workboats to pleasure boats, trawlers have retained this core element. The placement of the boarding door to assist in docking, the fold-down step at the helm, the simple shower door to prevent spray, and the reshaped master bunk are all evolutions of that mantra." - **PassageMaker***

Basic Information

Category: trawler

Model Year: 2018

Year Built: 2018

Country: United States

Dimensions

LOA: 35' (10.67mm)

LWL: 3' 8" (1.12mm)

Beam: 15.33

Max Draft: 3' 5" (1.04mm)

Speed, Capacities and Weight

Cruise Speed: 14 Knots Kts. (16 MPH)

Max Speed: 21 Knots Kts. (24 MPH)

Water Capacity: 212 Gallons

Holding Tank: 40 Gal Gallons

Fuel Capacity: 714 Gal Gallons

Accommodations

Total Cabins: 3

Hull and Deck Information

Hull Material: Fiberglass

Engine Information

Engines: 1

Manufacturer: Cummins

Fuel Type: Diesel

PHOTOS

Screen Shot 2023-07-10 at 15.34.25



Screen Shot 2023-07-10 at 15.34.31



Screen Shot 2023-07-10 at 15.34.36



Screen Shot 2023-07-10 at 15.34.51



Screen Shot 2023-07-10 at 15.34.56



Screen Shot 2023-07-10 at 15.35.06



Screen Shot 2023-07-10 at 15.35.18



Screen Shot 2023-07-10 at 15.35.32



Screen Shot 2023-07-10 at 15.35.39



Screen Shot 2023-07-10 at 15.35.44



Screen Shot 2023-07-10 at 15.35.51



Screen Shot 2023-07-10 at 15.35.56



Screen Shot 2023-07-10 at 15.36.05



Screen Shot 2023-07-10 at 15.36.11



Screen Shot 2023-07-10 at 15.36.16



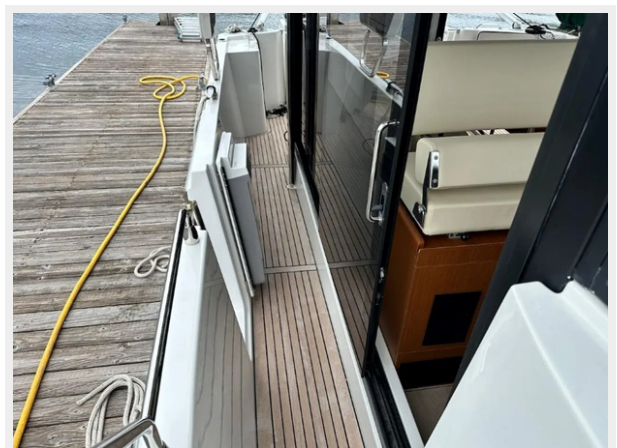
Screen Shot 2023-07-10 at 15.36.23



Screen Shot 2023-07-10 at 15.36.28



Screen Shot 2023-07-10 at 15.36.34



Screen Shot 2023-07-10 at 15.36.44



Screen Shot 2023-07-10 at 15.37.26



Screen Shot 2023-07-10 at 15.37.32



Screen Shot 2023-07-10 at 15.37.39



Screen Shot 2023-07-10 at 15.37.45



Screen Shot 2023-07-10 at 15.37.51



Screen Shot 2023-07-10 at 15.38.01



Screen Shot 2023-07-10 at 15.38.06



Screen Shot 2023-07-10 at 15.38.12



Screen Shot 2023-07-10 at 15.38.21



Screen Shot 2023-07-10 at 15.38.26



Screen Shot 2023-07-10 at 15.38.32



Screen Shot 2023-07-10 at 15.38.41



Screen Shot 2023-07-10 at 15.38.46



Screen Shot 2023-07-10 at 15.38.51



Screen Shot 2023-07-10 at 15.38.57



Screen Shot 2023-07-10 at 15.39.04



Screen Shot 2023-07-10 at 15.39.12



Screen Shot 2023-07-10 at 15.39.18



Screen Shot 2023-07-10 at 15.39.23



Screen Shot 2023-07-10 at 15.39.31



Screen Shot 2023-07-10 at 15.39.39



Screen Shot 2023-07-10 at 15.39.48



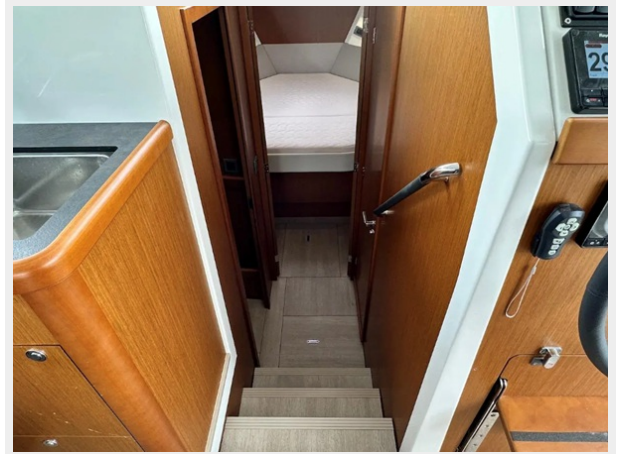
Screen Shot 2023-07-10 at 15.39.55



Screen Shot 2023-07-10 at 15.40.08

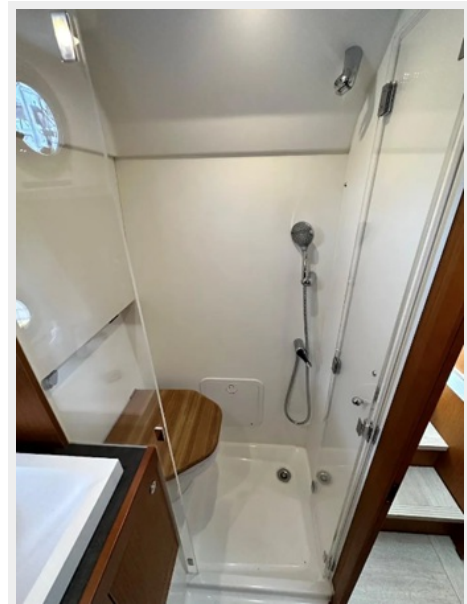


Screen Shot 2023-07-10 at 15.40.16



Screen Shot 2023-07-10 at 15.40.40

Screen Shot 2023-07-10 at 15.40.27



Screen Shot 2023-07-10 at 15.40.47



Screen Shot 2023-07-10 at 15.40.57



Screen Shot 2023-07-10 at 15.41.04



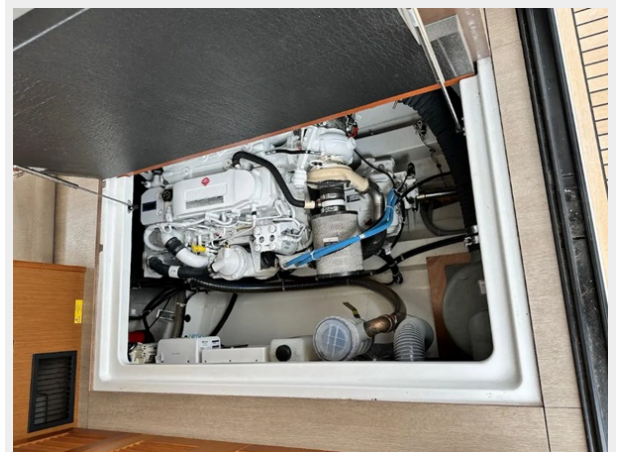
Screen Shot 2023-07-10 at 15.41.10



Screen Shot 2023-07-10 at 15.41.16



Screen Shot 2023-07-10 at 15.41.23



Screen Shot 2023-07-10 at 15.41.32



Screen Shot 2023-07-10 at 15.41.38



Screen Shot 2023-07-10 at 15.41.43



CONTACTS

Andrey Shestakov, leading yacht broker of the sales department of Shestakov Yacht Sales Inc. Shestakov Yacht Sales Inc., the official representative of the Miami/Fort Lauderdale FL headquarters.

Contact details

Email: andrey@shestakovyachtsales.com

Web: shestakovyachtsales.com/en/

Telephones

USA: +1(954)274-4435

Office hours

Monday – Saturday: **9:00 - 21:00** EDT

Sunday: **closed**

Address



Harbour Towne Marina, 850 NE 3rd St,
STE 213, Dania, FL 33004