

BLUE HEAVEN — PROWLER



Builder: PROWLER

Year Built: 2005

Model: Catamaran

Price: \$399,000 USD

Location: United States

LOA: 48' (14.63mm)

Beam: 21.33

Min Draft: 3' 3" (0.99mm)

Max Draft: 4' 6" (1.37mm)

Cruise Speed: 17 Knots Kts. (20 MPH)

Max Speed: 22 Knots Kts. (25 MPH)

Our experienced yacht broker, Andrey Shestakov, will help you choose and buy a yacht that best suits your needs **Blue Heaven — PROWLER** from our catalogue. Presently, at **Shestakov Yacht Sales Inc.**, we have a wide variety of yachts available on our sale's list. We also work in close contact with all the big yacht manufacturers from all over the world.

If you would like to buy a yacht **Blue Heaven — PROWLER** or would like help answering any questions concerning purchasing, selling or chartering a yacht, please call **+1(954)274-4435**

TABLE OF CONTENTS

TABLE OF CONTENTS	2
SPECIFICATIONS	6
Overview	6
Basic Information	6
Dimensions	6
Speed, Capacities and Weight	6
Accommodations	6
Hull and Deck Information	7
Engine Information	7
PHOTOS	8
002	8
003	8
004	8
005	8
006	8
007	8
008	9
009	9
010	9
011	9
012	9
013	9
014	10
016	10
017	10
018	10
019	10
020	10

021	11
031	11
032	11
033	11
034	11
035	11
036	12
037	12
038	12
039	12
040	12
041	12
042	13
043	13
044	13
045	13
046	13
047	13
048	14
049	14
050	14
051	14
052	14
053	14
054	15
055	15
056	15
057	15
058	15

059	15
060	16
061	16
063	16
064	16
065	16
066	16
067	17
068 Master Walk-In	17
069 Port Hull Steps	17
070	17
071	17
072	17
073	18
074	18
075	18
076	18
077	18
078	18
079	19
080	19
081	19
082	19
083	19
084 Stbd Eng Rm	19
085 Stbd Eng Rm	20
086 Stbd Eng Rm	20
087 Port Eng Rm	20
088 Port Eng Rm	20

089 Port Eng Rm	20
090 Generator	20
091 Inverter-Charger	21
092 Lithium Batteries	21
092 New AC 16K BTU	21
CONTACTS	22
Contact details	22
Telephones	22
Office hours	22
Address	22

SPECIFICATIONS

Overview

The Prowler 480 Power Catamaran is known for its safety, high level of comfort, speed and fuel economy. "BLUE HEAVEN'S" twin 315 HP Yanmar 6LPA-STP2 allows her to cruise at a comfortable speed of 17 knots. With a maximum draft of 4 feet 6 inches this power cat is perfect for both experienced and novice cruisers. "BLUE HEAVEN" is by far one of the best Prowler 480's ever built. She is a 3-stateroom/3-head power cat that was customized by her first owner during the building process, and she was completed to the highest standard possible. "BLUE HEAVEN" is only a two-owner yacht.

Although "BLUE HEAVEN" is a foreign built yacht, she has been approved for chartering in the United States. A real plus to those who would like to offset the cost of ownership.

Basic Information

Category: Catamaran

Model Year: 2005

Year Built: 2005

Country: United States

Dimensions

LOA: 48' (14.63mm)

Beam: 21.33

Min Draft: 3' 3" (0.99mm)

Max Draft: 4' 6" (1.37mm)

Speed, Capacities and Weight

Cruise Speed: 17 Knots Kts. (20 MPH)

Max Speed: 22 Knots Kts. (25 MPH)

Water Capacity: 300 Gallons

Fuel Capacity: 500 Gal Gallons

Accommodations

Total Cabins: 3

Total Heads: 3

Hull and Deck Information

Hull Material: Fiberglass

Hull Configuration: Catamaran

Engine Information

Engines: 2

Manufacturer: Yanmar

Engine Type: Inboard

Fuel Type: Diesel

PHOTOS

002



003



004



005



006



007



008



009



010



011



012



013



014



016



017



018



019



020



021



031



032



033



034



035



036



037



038



039



040



041



042



043



044



045



046



047



048



049



050



051



052



053



054



055



056



057



058



059



060



061



063



064



065



066



067



068 Master Walk-In



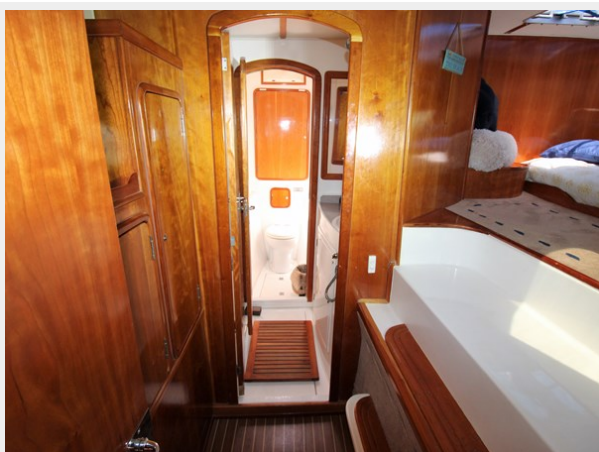
069 Port Hull Steps



070



071



072



073



074



075



076



077



078



079



080



081



082



083



084 Stbd Eng Rm



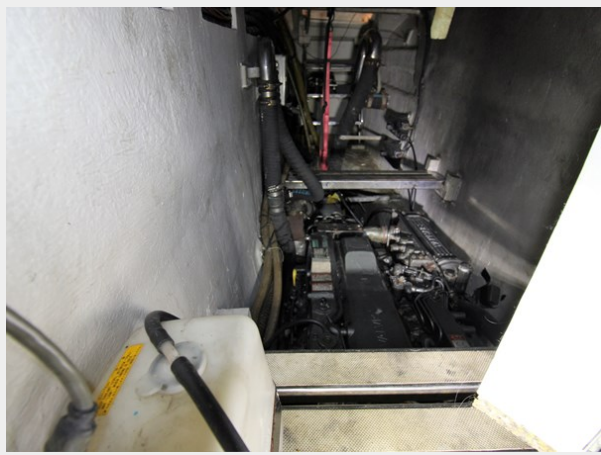
085 Stbd Eng Rm



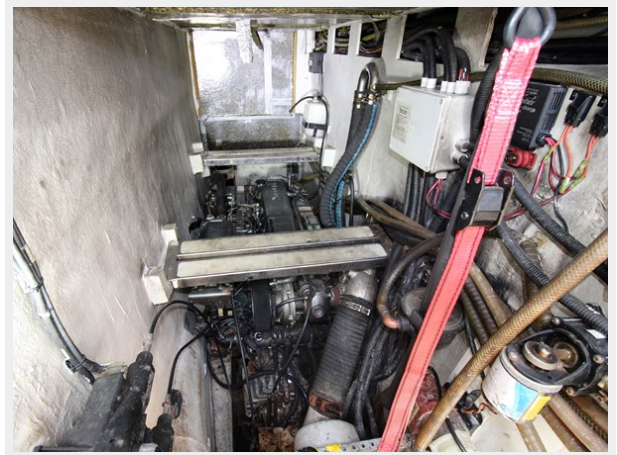
086 Stbd Eng Rm



087 Port Eng Rm



088 Port Eng Rm



089 Port Eng Rm



090 Generator



091 Inverter-Charger



092 Lithium Batteries



092 New AC 16K BTU



CONTACTS

Andrey Shestakov, leading yacht broker of the sales department of Shestakov Yacht Sales Inc. Shestakov Yacht Sales Inc., the official representative of the Miami/Fort Lauderdale FL headquarters.

Contact details

Email: andrey@shestakovyachtsales.com

Web: shestakovyachtsales.com/en/

Telephones

USA: +1(954)274-4435

Office hours

Monday – Saturday: **9:00 - 21:00** EDT

Sunday: **closed**

Address



Harbour Towne Marina, 850 NE 3rd St,
STE 213, Dania, FL 33004