

BREAK AWAY — GRAND BANKS



Судостроитель: GRAND BANKS

Год постройки: 1993

Модель: Траулер

Цена: **ЦЕНА ЯХТЫ ПО ЗАПРОСУ**

Местонахождение: United States

Длина общая: 42' (12.8mm)

Ширина: 14.16

Мин. осадка: 4' 2" (1.27mm)

Макс. осадка: 4' 2" (1.27mm)

Крейс. скорость: 10 Knots Kts. (12 MPH)

Макс. скорость: 17 Knots Kts. (20 MPH)

Купить **Break Away — GRAND BANKS** а также выбрать подходящую вам яхту из нашего каталога яхт вам поможет опытный яхтенный брокер Андрей Шестаков. На сегодняшний день компания **Shestakov Yacht Sales Inc.** имеет большое количество яхт в собственном списке продаж, а также тесно сотрудничает со всеми крупными яхтенными производителями по всему миру.

Для того чтобы купить яхту **Break Away — GRAND BANKS** а также проконсультироваться по любому вопросу связанному с покупкой, продажей, чартером яхт позвоните по телефону **+7(918)465-66-44**.

ОГЛАВЛЕНИЕ

ОГЛАВЛЕНИЕ	2
ХАРАКТЕРИСТИКИ	6
Обзор	6
Основная информация	6
Размеры	6
Скорость, вместимость и масса	6
Размещение	6
Корпус и палуба	6
Информация о двигателе	6
ФОТОГРАФИИ	7
0_2800368_42_grand_banks_port_profile	7
1_2800368_42_grand_banks_port_forward_profile	7
2_2800368_42_grand_banks_anchor_windlass	7
3_2800368_42_grand_banks_foredeck	7
4_2800368_42_grand_banks_foredeck_aft	7
5_2800368_42_grand_banks_port_side_deck1	7
6_2800368_42_grand_banks_port_side_deck2	8
7_2800368_42_grand_banks_starboard_side_deck1	8
8_2800368_42_grand_banks_starboard_side_deck2	8
9_2800368_42_grand_banks_flybridge_forward	8
10_2800368_42_grand_banks_flybridge_aft	8
11_2800368_42_grand_banks_flybridge_port	8
12_2800368_42_grand_banks_flybridge_starboard	8
13_2800368_42_grand_banks_flybridge_helm1	8
14_2800368_42_grand_banks_flybridge_helm2	9
15_2800368_42_grand_banks_flybridge_port_forward_seating	9
16_2800368_42_grand_banks_flybridge_starboard_forward_seating	9
17_2800368_42_grand_banks_flybridge_starboard_aft_seating1	9

18_2800368_42_grand_banks_flybridge_starboard_aft_seating2	9
19_2800368_42_grand_banks_hinged_mast_base	9
20_2800368_42_grand_banks_mast_boom	9
21_2800368_42_grand_banks_trunk_cabin_forward	9
22_2800368_42_grand_banks_trunk_cabin_aft	10
23_2800368_42_grand_banks_bbq_grill	10
25_2800368_42_grand_banks_tender_outboard1	10
24_2800368_42_grand_banks_tender	10
26_2800368_42_grand_banks_tender_outboard2	10
27_2800368_42_grand_banks_aftdeck	10
28_2800368_42_grand_banks_aftdeck_port	10
29_2800368_42_grand_banks_aftdeck_starboard	10
31_2800368_42_grand_banks_swimplatform	11
30_2800368_42_grand_banks_transom	11
32_2800368_42_grand_banks_salon_forward	11
33_2800368_42_grand_banks_salon_aft	11
34_2800368_42_grand_banks_salon_port	11
35_2800368_42_grand_banks_salon_starboard	11
36_2800368_42_grand_banks_salon_port_seating	11
37_2800368_42_grand_banks_port_seating_extension	11
38_2800368_42_grand_banks_salon_starboard_seating	12
39_2800368_42_grand_banks_galley1	12
40_2800368_42_grand_banks_galley2	12
41_2800368_42_grand_banks_lower_helm1	12
42_2800368_42_grand_banks_lower_helm2	12
43_2800368_42_grand_banks_master_stateroom	12
44_2800368_42_grand_banks_master_stateroom_port	12
45_2800368_42_grand_banks_master_stateroom_starboard	12
47_2800368_42_grand_banks_master_stateroom_head	13

46_2800368_42_grand_banks_master_stateroom_forward	13
48_2800368_42_grand_banks_master_stateroom_shower	13
49_2800368_42_grand_banks_guest_stateroom	13
50_2800368_42_grand_banks_guest_stateroom_head	13
51_2800368_42_grand_banks_engine_room_access	13
52_2800368_42_grand_banks_engine_room_forward	13
53_2800368_42_grand_banks_engine_room_aft	13
54_2800368_42_grand_banks_port_main_engine	14
55_2800368_42_grand_banks_starboard_main_engine	14
56_2800368_42_grand_banks_fuel_manifold	14
57_2800368_42_grand_banks_port_racor_fuel_filters	14
58_2800368_42_grand_banks_starboard_racor_fuel_filters	14
59_2800368_42_grand_banks_oil_change_system	14
60_2800368_42_grand_banks_stabilizer_system	14
61_2800368_42_grand_banks_port_stabilizer_head	14
62_2800368_42_grand_banks_port_stabilizer_fin	15
63_2800368_42_grand_banks_starboard_stabilizer_head	15
64_2800368_42_grand_banks_starboard_stabilizer_fin	15
65_2800368_42_grand_banks_water_heater	15
66_2800368_42_grand_banks_electrical_panel1	15
67_2800368_42_grand_banks_electrical_panel2	15
68_2800368_42_grand_banks_generator	15
69_2800368_42_grand_banks_inverter_charger	15
70_2800368_42_grand_banks_battery_charger	16
71_2800368_42_grand_banks_hull_bottom_aft	16
72_2800368_42_grand_banks_port_running_gear	16
73_2800368_42_grand_banks_starboard_running_gear	16
КОНТАКТЫ	17
Контактная информация	17

Телефоны	17
Время работы	17
Адрес	17

ХАРАКТЕРИСТИКИ

Обзор

Break Away is a 1993 42' Grand Banks Classic trawler in nice condition. She offers twin Caterpillar 300 HP main engines, Onan 8 kW generator, Victron Energy 3,000 watt inverter/charger, Naiad stabilizers, Dual Racor fuel filters with a vacuum gauge for each main engine, Reverso oil change system, dripless shaft seals, line cutters, updated Garmin electronics, flybridge Eisenglass enclosure and a 2 stateroom 2 head layout. Her brightwork has been maintained beautifully. She is stored inside until she sells, but she is easily accessible for inspection. Break Away is Great Loop capable.

Основная информация

Тип судна: Траулер

Модельный год: 1993

Год постройки: 1993

Страна: United States

Размеры

Длина общая: 42' (12.8mm)

Ширина: 14.16

Мин. осадка: 4' 2" (1.27mm)

Макс. осадка: 4' 2" (1.27mm)

Скорость, вместимость и масса

Крейс. скорость: 10 Knots Kts. (12 MPH)

Макс. скорость: 17 Knots Kts. (20 MPH)

Вместимость воды: 265 Gallons

Вместимость сточного бака: 30 Gal
Gallons

Объем топливного бака: 600 Gal
Gallons

Размещение

Всего кают: 2

Всего ком. состава: 2

Корпус и палуба

Материал корпуса: Fiberglass

Информация о двигателе

Двигатели: 1

Производитель: Caterpillar

ФОТОГРАФИИ

0_2800368_42_grand_banks_port_profile



1_2800368_42_grand_banks_port_forward_profile



2_2800368_42_grand_banks_anchor_windlass



3_2800368_42_grand_banks_foredeck



4_2800368_42_grand_banks_foredeck_aft



5_2800368_42_grand_banks_port_side_deck1



6_2800368_42_grand_banks_port_side_deck2



7_2800368_42_grand_banks_starboard_side_deck1



8_2800368_42_grand_banks_starboard_side_deck2



9_2800368_42_grand_banks_flybridge_forward



10_2800368_42_grand_banks_flybridge_aft



11_2800368_42_grand_banks_flybridge_port



12_2800368_42_grand_banks_flybridge_starboard



13_2800368_42_grand_banks_flybridge_helm1



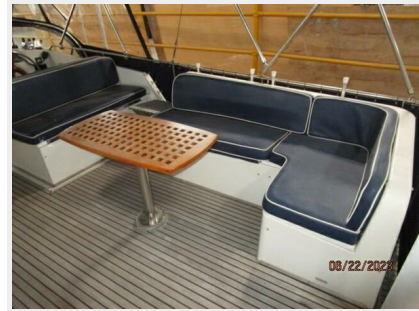
14_2800368_42_grand_banks_flybridge_helm2



15_2800368_42_grand_banks_flybridge_port_forward_seating



16_2800368_42_grand_banks_flybridge_starboard_forward_seating 17_2800368_42_grand_banks_flybridge_starboard_aft_seating1



18_2800368_42_grand_banks_flybridge_starboard_aft_seating2



19_2800368_42_grand_banks_hinged_mast_base



20_2800368_42_grand_banks_mast_boom



21_2800368_42_grand_banks_trunk_cabin_forward



22_2800368_42_grand_banks_trunk_cabin_aft



23_2800368_42_grand_banks_bbq_grill



24_2800368_42_grand_banks_tender



25_2800368_42_grand_banks_tender_outboard1



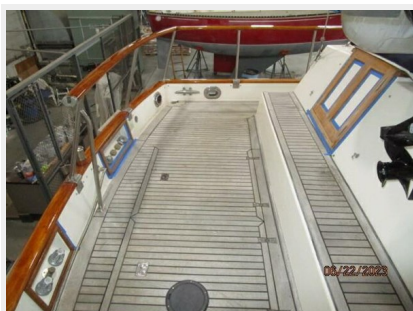
26_2800368_42_grand_banks_tender_outboard2



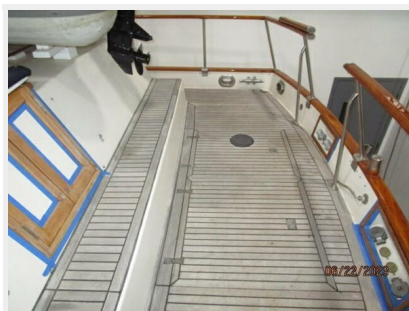
27_2800368_42_grand_banks_afdeck



28_2800368_42_grand_banks_afdeck_port



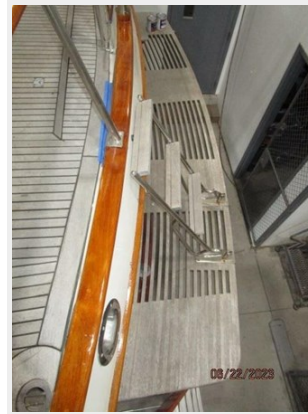
29_2800368_42_grand_banks_afdeck_starboard



30_2800368_42_grand_banks_transom



31_2800368_42_grand_banks_swimplatform



32_2800368_42_grand_banks_salon_forward



33_2800368_42_grand_banks_salon_aft



34_2800368_42_grand_banks_salon_port



35_2800368_42_grand_banks_salon_starboard



36_2800368_42_grand_banks_salon_port_seating



37_2800368_42_grand_banks_port_seating_extension



38_2800368_42_grand_banks_salon_starboard_seating



39_2800368_42_grand_banks_galley1



40_2800368_42_grand_banks_galley2



41_2800368_42_grand_banks_lower_helm1



42_2800368_42_grand_banks_lower_helm2



43_2800368_42_grand_banks_master_stateroom



44_2800368_42_grand_banks_master_stateroom_port



45_2800368_42_grand_banks_master_stateroom_starboard



46_2800368_42_grand_banks_master_stateroom_forward



47_2800368_42_grand_banks_master_stateroom_head



48_2800368_42_grand_banks_master_stateroom_shower



49_2800368_42_grand_banks_guest_stateroom



50_2800368_42_grand_banks_guest_stateroom_head



51_2800368_42_grand_banks_engine_room_access



52_2800368_42_grand_banks_engine_room_forward



53_2800368_42_grand_banks_engine_room_aft



54_2800368_42_grand_banks_port_main_engine



55_2800368_42_grand_banks_starboard_main_engine



56_2800368_42_grand_banks_fuel_manifold



57_2800368_42_grand_banks_port_racor_fuel_filters



58_2800368_42_grand_banks_starboard_racor_fuel_filters



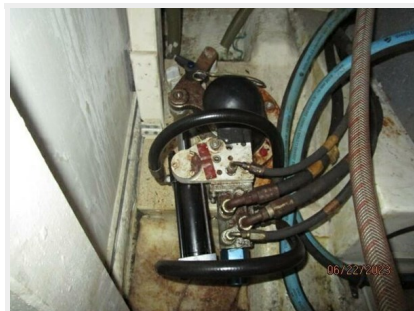
59_2800368_42_grand_banks_oil_change_system



60_2800368_42_grand_banks_stabilizer_system



61_2800368_42_grand_banks_port_stabilizer_head



62_2800368_42_grand_banks_port_stabilizer_fin



63_2800368_42_grand_banks_starboard_stabilizer_head



64_2800368_42_grand_banks_starboard_stabilizer_fin



65_2800368_42_grand_banks_water_heater



66_2800368_42_grand_banks_electrical_panel1



67_2800368_42_grand_banks_electrical_panel2



68_2800368_42_grand_banks_generator



69_2800368_42_grand_banks_inverter_charger



70_2800368_42_grand_banks_battery_charger



71_2800368_42_grand_banks_hull_bottom_aft



72_2800368_42_grand_banks_port_running_gear



73_2800368_42_grand_banks_starboard_running_gear



КОНТАКТЫ

Андрей Шестаков (Andrey Shestakov) – ведущий яхтенный брокер отдела продаж яхт и судов компании Shestakov Yacht Sales Inc. Официальный представитель Shestakov Yacht Sales Inc. для русскоговорящих клиентов в центральном офисе компании в Майами/Форт Лодердейл/Флорида/США.

Контактная информация

Email:
andrey@shestakovyachtsales.com

Web: shestakovyachtsales.com

Телефоны

Краснодарский край: **+7(918)465-66-44**

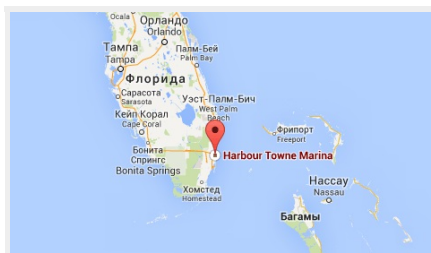
США, Майами, Флорида: **+1(954)274-4435**

Время работы

Понедельник – Суббота: **9:00 - 21:00**
EDT

Воскресенье: **Закрито**

Адрес



Harbour Towne Marina, 850 NE 3rd St,
STE 213, Dania, FL 33004