

## BERILDA — FEADSHIP



**Судостроитель:** FEADSHIP

**Год постройки:** 2001

**Модель:** Мега-яхта

**Цена:** \$19,500,000 USD

**Местонахождение:** United States

**Длина общая:** 155' (47.24mm)

**Ширина:** 28.75

**Макс. осадка:** 9' 7" (2.92mm)

**Крейс. скорость:** 13 Knots Kts. (15 MPH)

**Макс. скорость:** 15 Knots Kts. (17 MPH)

Купить **BERILDA — FEADSHIP** а также выбрать подходящую вам яхту из нашего каталога яхт вам поможет опытный яхтенный брокер Андрей Шестаков. На сегодняшний день компания **Shestakov Yacht Sales Inc.** имеет большое количество яхт в собственном списке продаж, а также тесно сотрудничает со всеми крупными яхтенными производителями по всему миру.

Для того чтобы купить яхту **BERILDA — FEADSHIP** а также проконсультироваться по любому вопросу связанному с покупкой, продажей, чартером яхт позвоните по телефону **+7(918)465-66-44**.

# ОГЛАВЛЕНИЕ

---

ОГЛАВЛЕНИЕ	2
ХАРАКТЕРИСТИКИ	4
Обзор	4
Основная информация	5
Размеры	5
Скорость, вместимость и масса	6
Размещение	6
Корпус и палуба	6
Информация о двигателе	6
ФОТОГРАФИИ	7
PS-BERILDA-Profile-6	7
PS-Berilda-Starboard-Bow	7
PS-Berilda-Profile-2	7
BERILDA Bow	7
PS-Berilda-Profile-4	7
Salon 2	7
Salon 3	8
Master 1	8
Master 3	8
Master 2	8
Bonus Cabin	8
Master Bath 1	8
Master Bath 2	9
Master Office	9
Main Deck Dining 1	9
Guest Stateroom 2	9
Guest Stateroom 1	9
Guest Stateroom 3	9

---

Guest Bath 1	10
DSC_4985 2	10
Sun Deck 3	10
Sun Deck 2	10
DSC_5053 2	10
DSC_4937 2	10
DSC_4128 2	11
DSC_4172 2	11
Bridge Deck 2	11
DSC_4152 2	11
Sky Lounge 1	11
Sky Lounge 2	11
Sky Lounge 3	12
Pilothouse 3	12
Portuguese Bridge	12
Captain Cabin 1	12
Captain Cabin	12
Crew 1	12
Crew 3	13
Crew 2	13
Stern 1	13
BERILDA Aerial	13
<b>КОНТАКТЫ</b>	<b>14</b>
Контактная информация	14
Телефоны	14
Время работы	14
Адрес	14

---

---

# ХАРАКТЕРИСТИКИ

---

## Обзор

---

“Berilda” presents a rare opportunity to acquire a top-tier yacht boasting the highest pedigree with a documented history of excellent owners and meticulous care. Constructed by the renowned Dutch shipyard, Feadship - Royal Van Lent, and crafted by seasoned designers with years of expertise, she achieves a flawless balance of interior and exterior spaces. This 47m (155ft) vessel was built to meet Lloyd's classification and LY1 compliance standards, delivered in 2001 with an impressive 499GT of interior volume and trans-pacific range of 4600 miles at 10 knots. The esteemed John Munford has curated a classic interior, ensuring optimal comfort for the owner and guests within an ambiance of relaxed elegance.

Originally, christened as Northern Light, she enjoyed a decade long tenure under the ownership of a distinguished member of the Royal Swedish Yacht Club (KSSS). From 2010-2012, she was owned by Richard and Leslie Fairbanks who later did a total rebuild of the 1930 122ft motor yacht Atlantide.

Her next chapter can best be described as a nine-year stewardship, by a well-known gentleman with a history of famous yachts named “Mary A”, whereby he continued her legacy of meticulous care. During the years of 2020-2021, she underwent a comprehensive refit, full paint job, and an intensive 20-year Lloyds survey, ensuring her excellent condition and continued adherence to the highest standards.

Acquired in 2021, the current owner has traversed the Atlantic twice and explored Europe, New England, the Bahamas and the Caribbean, all while maintaining her impeccable state.

The interior boasts exquisite Honduran mahogany with traditional English raised paneling, enhancing the timeless feel of the yacht. The main salon offers a comfortable seating area leading to a separate formal dining space for 10 guests and is accentuated by exposed beams that highlight the vessel's graceful lines.

The owner's suite, situated beyond the foyer and staircase, boasts a study, full-beam bedroom, walk-in wardrobe, and an adjacent cabin offering versatile options for use as a 6th mini-

stateroom or for other purposes.

On the lower deck, four additional guest suites offer luxurious retreats, comprising two double cabins forward and two twin cabins aft, each equipped with a Pullman berth. In total, “Berilda” comfortably accommodates up to 14 guests across 6 cabins, with quarters for a dedicated crew of 10.

The bridge deck lounge is basked in natural light and features beautiful hardwood floors, wrap-around sofa seating, and a marble-topped bar, providing a refined setting for relaxation and entertainment. Outside, the bridge deck offers an alfresco dining space with built-in semi-circular lounge areas aft. The sun deck features a jacuzzi surrounded by sun pads, a long bar with seating, and additional lounging areas with umbrellas for sun protection, perfect for leisurely days at sea.

Powered by twin Caterpillar diesel engines, “Berilda” achieves a cruising speed of 13 knots, and a 4600-mile trans-oceanic range (@10kts.), making her ideal for worldwide cruising. Her zero-speed stabilizers constantly provide a smoother and more comfortable experience at anchor or while travelling at sea.

## Основная информация

---

**Тип судна:** Мега-яхта

**Подкатегория:** Мега-яхта

**Модельный год:** 2001

**Год постройки:** 2001

**Страна:** United States

## Размеры

---

**Длина общая:** 155' (47.24mm)

**Длина по ватерлинии:** 134' 9" (41.07mm)

**Ширина:** 28.75

**Макс. осадка:** 9' 7" (2.92mm)

## Скорость, вместимость и масса

---

<b>Крейс. скорость:</b> 13 Knots Kts. (15 MPH)	<b>Дальность на крейсерской скорости:</b> 3600
<b>Макс. скорость:</b> 15 Knots Kts. (17 MPH)	<b>Чистый вес:</b> 499 Pounds
<b>Вместимость воды:</b> 4227 Gallons	<b>Вместимость сточного бака:</b> 1189 Gal Gallons
<b>Объем топливного бака:</b> 20738 Gal Gallons	<b>Расход топлива:</b> 55 Gal Gallons

## Размещение

---

<b>Всего кают:</b> 6	<b>Спальные места:</b> 14
<b>Всего ком. состава:</b> 7	

## Корпус и палуба

---

<b>Материал корпуса:</b> Steel	<b>Материал палубы:</b> Teak
<b>Комплектация корпуса:</b> Full Displacement	<b>Цвет корпуса:</b> Flag Blue
	<b>Дизайнер корпуса:</b> De Voogt
<b>Дизайнер интерьера:</b> John Munford	

## Информация о двигателе

---

<b>Двигатели:</b> 2	<b>Производитель:</b> Caterpillar
<b>Тип двигателя:</b> Inboard	<b>Тип топлива:</b> Diesel

# ФОТОГРАФИИ

**PS-BERILDA-Profile-6**



**PS-Berilda-Starboard-Bow**



**BERILDA Bow**



**PS-Berilda-Profile-2**



**PS-Berilda-Profile-4**



**Salon 2**



**Salon 3**



**Master 1**



**Master 3**



**Master 2**



**Bonus Cabin**



**Master Bath 1**





**Master Bath 2**



**Master Office**



**Main Deck Dining 1**



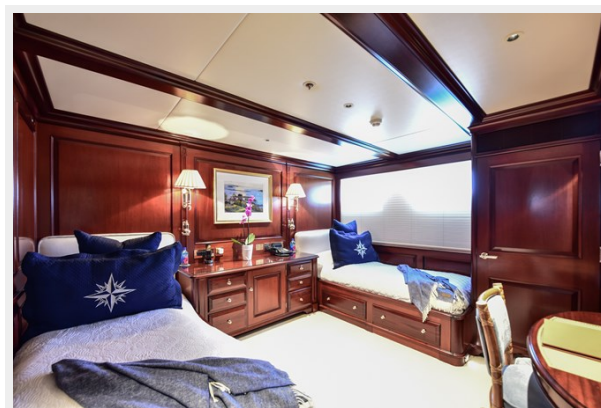
**Guest Stateroom 2**



**Guest Stateroom 1**



**Guest Stateroom 3**



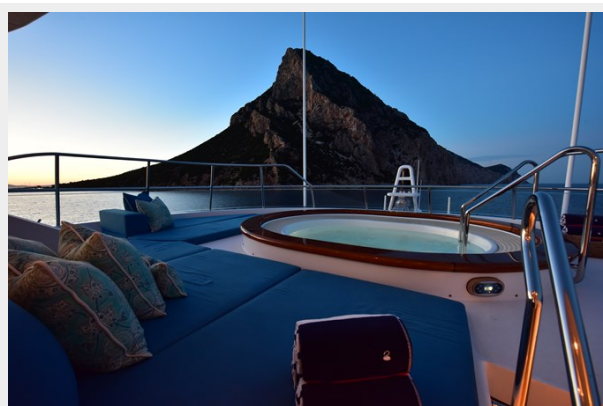
**Guest Bath 1**



**DSC\_4985 2**



**Sun Deck 3**



**Sun Deck 2**



**DSC\_5053 2**



**DSC\_4937 2**



DSC\_4128 2



DSC\_4172 2



Bridge Deck 2



DSC\_4152 2



Sky Lounge 1



Sky Lounge 2



**Sky Lounge 3**



**Pilothouse 3**



**Portuguese Bridge**



**Captain Cabin 1**



**Captain Cabin**



**Crew 1**



**Crew 3**



**Crew 2**



**BERILDA Aerial**



**Stern 1**



# КОНТАКТЫ

---

Андрей Шестаков (Andrey Shestakov) – ведущий яхтенный брокер отдела продаж яхт и судов компании Shestakov Yacht Sales Inc. Официальный представитель Shestakov Yacht Sales Inc. для русскоговорящих клиентов в центральном офисе компании в Майами/Форт Лодердейл/Флорида/США.

## Контактная информация

---

Email: [andrey@shestakovyachtsales.com](mailto:andrey@shestakovyachtsales.com)

Web: [shestakovyachtsales.com](http://shestakovyachtsales.com)

## Телефоны

---

Краснодарский край: **+7(918)465-66-44**

США, Майами, Флорида: **+1(954)274-4435**

## Время работы

---

Понедельник – Суббота: **9:00 - 21:00**  
EDT

Воскресенье: **Закрито**

## Адрес

---



Harbour Towne Marina, 850 NE 3rd St,  
STE 213, Dania, FL 33004