

RSC 1900 — RSC YACHTS



Builder: RSC YACHTS

Year Built: 2019

Model: Cruising Sailboat

Price: PRICE ON APPLICATION

Location: Netherlands

LOA: 62' 10" (19.15mm)

Beam: 17.38

Min Draft: 8' 9" (2.65mm)

Max Draft: 8' 9" (2.65mm)

Our experienced yacht broker, Andrey Shestakov, will help you choose and buy a yacht that best suits your needs **RSC 1900 — RSC YACHTS** from our catalogue. Presently, at Shestakov Yacht Sales Inc., we have a wide variety of yachts available on our sale's list. We also work in close contact with all the big yacht manufacturers from all over the world.

If you would like to buy a yacht **RSC 1900 — RSC YACHTS** or would like help answering any questions concerning purchasing, selling or chartering a yacht, please call **+1(954)274-4435**

TABLE OF CONTENTS

TABLE OF CONTENTS	2
SPECIFICATIONS	4
Overview	4
Basic Information	4
Dimensions	4
Speed, Capacities and Weight	4
Accommodations	4
Hull and Deck Information	4
Engine Information	5
PHOTOS	6
04 RSC 1900 Sailing 2 006x	6
05 RSC 1900 Sailing 3 016x	6
06 RSC 1900 Aft Deck 022x	6
08 RSC 1900 Helm 172x	6
09 RSC 1900 Cockpit 223x	6
10 RSC 1900 Saloon 252x	6
14 RSC 1900 Galley 251x	7
13 RSC 1900 Nav 260x	7
16 RSC 1900 Owners Cabin 2 249x	7
15 RSC 1900 Owners Cabin 248x	7
17 RSC Owners Bath 1900 241x	7
18 RSC 1900 Guest Cabin 265x	7
19 RSC 1900 Guest Bath 266x	8
20 RSC 1900 Crew 1900 267x	8
CONTACTS	9
Contact details	9
Telephones	9
Office hours	9

Address

9

SPECIFICATIONS

Overview

N/A

Basic Information

Category: Cruising Sailboat

Model Year: 2019

Year Built: 2019

Country: Netherlands

Dimensions

LOA: 62' 10" (19.15mm)

LWL: 56' 10" (17.3mm)

Beam: 17.38

Min Draft: 8' 9" (2.65mm)

Max Draft: 8' 9" (2.65mm)

Speed, Capacities and Weight

Water Capacity: 1200 Gallons

Holding Tank: 79.25 Gal Gallons

Fuel Capacity: 198.13 Gal Gallons

Accommodations

Total Cabins: 3

Hull and Deck Information

Hull Material: Aluminum

Hull Configuration: Fin & Bulb

Hull Designer: Kees van de Stadt

Exterior Designer: Kees van de Stadt

Engine Information

Engines: 1

Manufacturer: Volvo Penta

Engine Type: Inboard

Fuel Type: Diesel

PHOTOS

04 RSC 1900 Sailing 2 006x



05 RSC 1900 Sailing 3 016x



06 RSC 1900 Aft Deck 022x



08 RSC 1900 Helm 172x



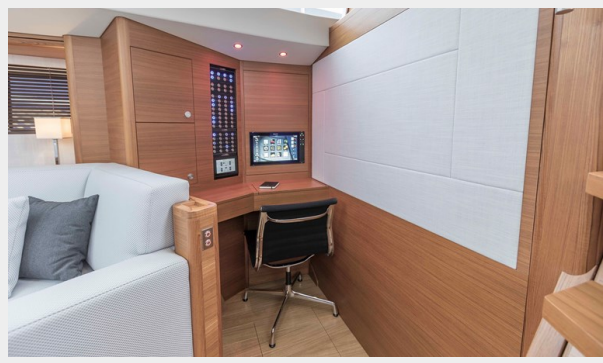
09 RSC 1900 Cockpit 223x



10 RSC 1900 Saloon 252x



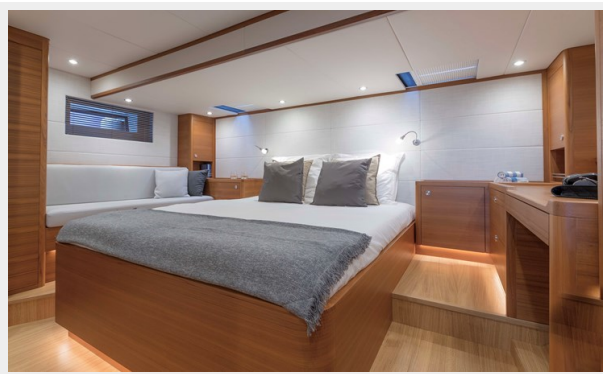
13 RSC 1900 Nav 260x



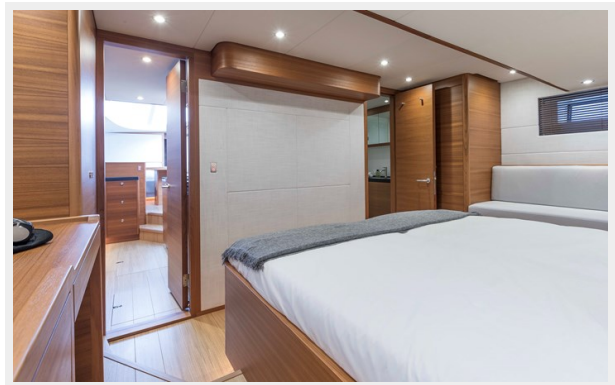
14 RSC 1900 Galley 251x



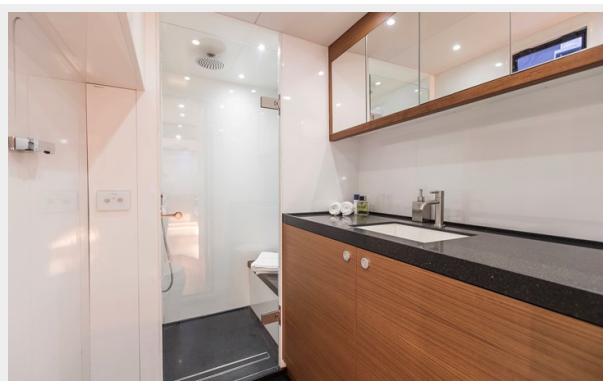
15 RSC 1900 Owners Cabin 248x



16 RSC 1900 Owners Cabin 2 249x



17 RSC Owners Bath 1900 241x



18 RSC 1900 Guest Cabin 265x



19 RSC 1900 Guest Bath 266x



20 RSC 1900 Crew 1900 267x



CONTACTS

Andrey Shestakov, leading yacht broker of the sales department of Shestakov Yacht Sales Inc. Shestakov Yacht Sales Inc., the official representative of the Miami/Fort Lauderdale FL headquarters.

Contact details

Email: andrey@shestakovyachtsales.com

Web: shestakovyachtsales.com/en/

Telephones

USA: +1(954)274-4435

Office hours

Monday – Saturday: **9:00 - 21:00** EDT

Sunday: **closed**

Address



Harbour Towne Marina, 850 NE 3rd St,
STE 213, Dania, FL 33004