

FANTASY 1 — SEA RAY



Builder: SEA RAY

Year Built: 1992

Model: cruiser

Price: PRICE ON APPLICATION

Location: Canada

LOA: 37' 5" (11.4mm)

Beam: 12.41

Max Draft: 2' 6" (0.76mm)

Cruise Speed: 22 Knots Kts. (25 MPH)

Our experienced yacht broker, Andrey Shestakov, will help you choose and buy a yacht that best suits your needs **Fantasy 1 — SEA RAY** from our catalogue. Presently, at Shestakov Yacht Sales Inc., we have a wide variety of yachts available on our sale's list. We also work in close contact with all the big yacht manufacturers from all over the world.

If you would like to buy a yacht **Fantasy 1 — SEA RAY** or would like help answering any questions concerning purchasing, selling or chartering a yacht, please call **+1(954)274-4435**

TABLE OF CONTENTS

TABLE OF CONTENTS	2
SPECIFICATIONS	4
Overview	4
Basic Information	4
Dimensions	4
Speed, Capacities and Weight	4
Accommodations	4
Hull and Deck Information	5
Engine Information	5
PHOTOS	6
IMG_1093	6
IMG_1092	6
IMG_1095	6
IMG_1096	6
IMG_1097	7
IMG_1098	7
IMG_1100	7
IMG_1099	7
IMG_1101	8
IMG_1102	8
IMG_1104	8
IMG_1103	8
IMG_1105	9
IMG_1106	9
IMG_1107	9
IMG_1108	9
IMG_1109	10
IMG_1110	10

IMG_1111	10
CONTACTS	11
Contact details	11
Telephones	11
Office hours	11
Address	11

SPECIFICATIONS

Overview

Aggressive styling, lush accommodations, and sporty performance made this 1990's cruiser yet another sales success for Sea Ray. A spacious mid-cabin interior with large galley, and head with stall shower is dominated by a huge 10-foot curved sofa. Note the triple-wide helm seat, and spacious cockpit with upgraded marine carpet and cockpit bar with updated fridge - perfect for entertaining all your friends and family.

Basic Information

Category: cruiser

Sub Category: Express

Model Year: 1992

Year Built: 1992

Country: Canada

Dimensions

LOA: 37' 5" (11.4mm)

Beam: 12.41

Max Draft: 2' 6" (0.76mm)

Speed, Capacities and Weight

Cruise Speed: 22 Knots Kts. (25 MPH)

Water Capacity: 70 Gallons

Holding Tank: 40 Gal Gallons

Fuel Capacity: 275 Gal Gallons

Accommodations

Total Cabins: 2

Hull and Deck Information

Hull Material: Fiberglass

Engine Information

Engines: 2

Manufacturer: Mercury Mercruiser

Engine Type: Inboard

Fuel Type: Gas

PHOTOS

IMG_1092



IMG_1093



IMG_1095



IMG_1096



IMG_1097



IMG_1098



IMG_1100



IMG_1099



IMG_1101



IMG_1102



IMG_1104



IMG_1103



IMG_1105



IMG_1106



IMG_1107



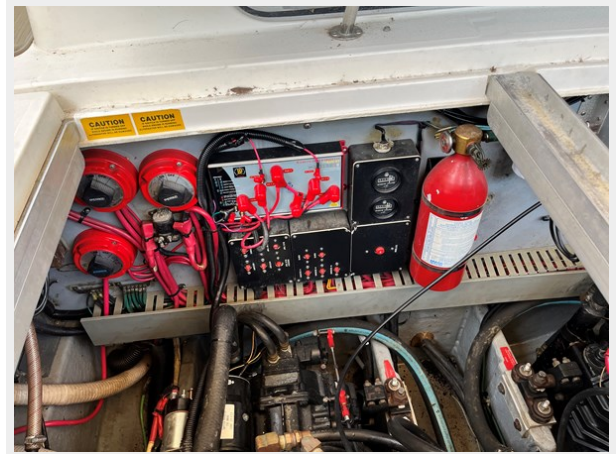
IMG_1108



IMG_1109



IMG_1110



IMG_1111



CONTACTS

Andrey Shestakov, leading yacht broker of the sales department of Shestakov Yacht Sales Inc. Shestakov Yacht Sales Inc., the official representative of the Miami/Fort Lauderdale FL headquarters.

Contact details

Email: andrey@shestakovyachtsales.com

Web: shestakovyachtsales.com/en/

Telephones

USA: +1(954)274-4435

Office hours

Monday – Saturday: **9:00 - 21:00** EDT

Sunday: **closed**

Address



Harbour Towne Marina, 850 NE 3rd St,
STE 213, Dania, FL 33004