

## NO CURFEW — PRINCESS YACHTS



**Builder:** PRINCESS YACHTS

**Year Built:** 2009

**Model:** Motor Yacht

**Price:** PRICE ON APPLICATION

**Location:** United States

**LOA:** 85' (25.91mm)

**Beam:** 20.66

**Max Draft:** 5' 5" (1.65mm)

**Cruise Speed:** 21 Knots Kts. (24 MPH)

**Max Speed:** 27 Knots Kts. (31 MPH)

Our experienced yacht broker, Andrey Shestakov, will help you choose and buy a yacht that best suits your needs **NO CURFEW — PRINCESS YACHTS** from our catalogue. Presently, at Shestakov Yacht Sales Inc., we have a wide variety of yachts available on our sale's list. We also work in close contact with all the big yacht manufacturers from all over the world.

If you would like to buy a yacht **NO CURFEW — PRINCESS YACHTS** or would like help answering any questions concerning purchasing, selling or chartering a yacht, please call **+1(954)274-4435**

# TABLE OF CONTENTS

---

TABLE OF CONTENTS	2
SPECIFICATIONS	5
Basic Information	5
Dimensions	5
Speed, Capacities and Weight	5
Accommodations	5
Hull and Deck Information	5
Engine Information	6
PHOTOS	7
DJI_20230720120010_0364_D	7
DJI_20230720115904_0360_D	7
DJI_20230720120052_0369_D	7
DJI_20230720120116_0372_D	7
DJI_20230720120158_0376_D	7
DJI_20230720120213_0378_D	7
DJI_20230720120232_0380_D	8
DJI_20230720120303_0383_D	8
DSC02508	8
DSC02511	8
DJI_20230720120332_0386_D	8
DSC02512	8
DJI_20230720120426_0391_D	9
DJI_20230720120439_0392_D	9
DJI_20230720144618_0429_D	9
DJI_20230720144750_0453_D	9
DJI_20230720144802_0458_D	9
DSC02497	9
DSC02501	10

---

DSC02502	10
DSC02517	10
DSC02519	10
DSC02522	10
DSC02523	10
DSC02525	11
DSC02529	11
DSC02530	11
DSC02531	11
DSC02532	11
DSC02534	11
DSC02541	12
DSC02543	12
DSC02546	12
Screenshot 2023-07-23 at 10.17.35 AM	12
Screenshot 2023-07-23 at 10.20.02 AM	12
Screenshot 2023-07-23 at 10.19.24 AM	12
DSC02464	13
DSC02466	13
DSC02468	13
DSC02475	13
DSC02478	13
DSC02476	13
DSC02404	14
DSC02407	14
DSC02410	14
DSC02419	14
DSC02425	14
DSC02431	14

---

---

DSC02435	15
DSC02436	15
DSC02437	15
DSC02444	15
DSC02448	15
DSC02449	15
DSC02450	16
DSC02452	16
DSC02453	16
DSC02455	16
DSC02456	16
DSC02547	16
DSC02549	17
DSC02550	17
DSC02556	17
CONTACTS	18
Contact details	18
Telephones	18
Office hours	18
Address	18

---

# SPECIFICATIONS

---

## Basic Information

---

**Category:** Motor Yacht

**Model Year:** 2009

**Year Built:** 2009

**Country:** United States

## Dimensions

---

**LOA:** 85' (25.91mm)

**Beam:** 20.66

**Max Draft:** 5' 5" (1.65mm)

## Speed, Capacities and Weight

---

**Cruise Speed:** 21 Knots Kts. (24 MPH)

**Cruise Speed Range:** 1950

**Max Speed:** 27 Knots Kts. (31 MPH)

**Max Speed Range:** 2450 Kts.

**Water Capacity:** 300 Gallons

**Holding Tank:** 100 Gal Gallons

**Fuel Capacity:** 2188 Gal Gallons

## Accommodations

---

**Total Cabins:** 4

**Total Heads:** 5

## Hull and Deck Information

---

**Hull Material:** Fiberglass

---

## Engine Information

---

**Engines:** 2

**Manufacturer:** MTU

**Engine Type:** Inboard

**Fuel Type:** Diesel

# PHOTOS

DJI\_20230720120010\_0364\_D



DJI\_20230720115904\_0360\_D



DJI\_20230720120052\_0369\_D



DJI\_20230720120116\_0372\_D



DJI\_20230720120158\_0376\_D



DJI\_20230720120213\_0378\_D





DJI\_20230720120232\_0380\_D



DJI\_20230720120303\_0383\_D



DSC02508



DSC02511



DSC02512



DJI\_20230720120332\_0386\_D





DJI\_20230720120426\_0391\_D



DJI\_20230720120439\_0392\_D



DJI\_20230720144618\_0429\_D



DJI\_20230720144750\_0453\_D



DJI\_20230720144802\_0458\_D



DSC02497





DSC02501



DSC02502



DSC02517



DSC02519



DSC02522



DSC02523





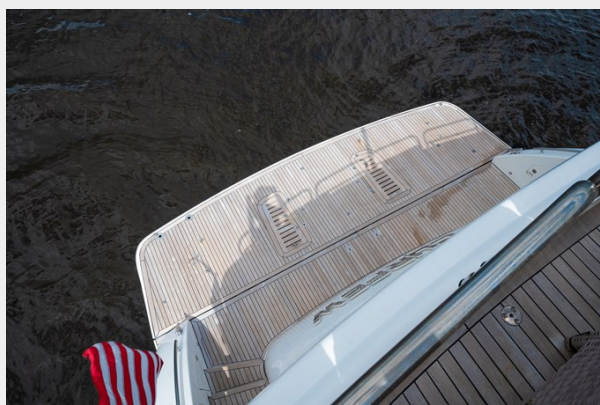
DSC02525



DSC02529



DSC02530



DSC02531



DSC02532



DSC02534



**DSC02541**



**DSC02543**



**DSC02546**



**Screenshot 2023-07-23 at 10.17.35 AM**



**Screenshot 2023-07-23 at 10.20.02 AM**



**Screenshot 2023-07-23 at 10.19.24 AM**





DSC02464



DSC02466



DSC02468



DSC02475



DSC02478



DSC02476





DSC02404



DSC02407



DSC02410



DSC02419



DSC02425



DSC02431



DSC02435



DSC02436



DSC02437



DSC02444



DSC02448



DSC02449

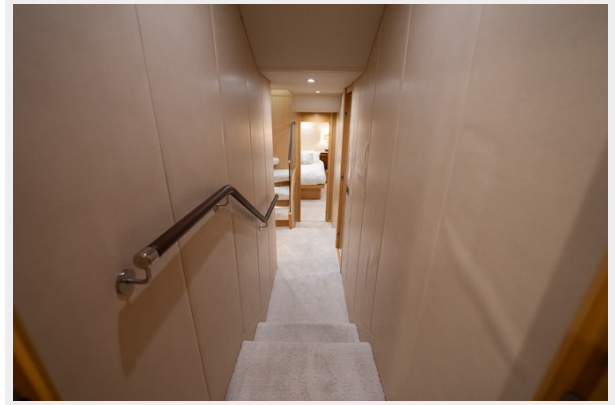




DSC02450



DSC02452



DSC02453



DSC02455



DSC02456



DSC02547



**DSC02549**



**DSC02550**



**DSC02556**



---

# CONTACTS

---

Andrey Shestakov, leading yacht broker of the sales department of Shestakov Yacht Sales Inc. Shestakov Yacht Sales Inc., the official representative of the Miami/Fort Lauderdale FL headquarters.

---

## Contact details

---

Email: [andrey@shestakovyachtsales.com](mailto:andrey@shestakovyachtsales.com)

Web: [shestakovyachtsales.com/en/](http://shestakovyachtsales.com/en/)

---

## Telephones

---

USA: +1(954)274-4435

---

## Office hours

---

Monday – Saturday: **9:00 - 21:00** EDT

Sunday: **closed**

---

## Address

---



Harbour Towne Marina, 850 NE 3rd St,  
STE 213, Dania, FL 33004