

## DEFIANT — PALMER JOHNSON



**Builder:** PALMER JOHNSON

**Year Built:** 2012

**Model:** Semi-Displacement

**Price:** \$10,900,000 USD

**Location:** United States

**LOA:** 136' (41.45m)

**Beam:** 27.49

**Max Draft:** 6' 2" (1.86m)

**Cruise Speed:** 24 Knots Kts. (28 MPH)

**Max Speed:** 28 Knots Kts. (32 MPH)

Our experienced yacht broker, Andrey Shestakov, will help you choose and buy a yacht that best suits your needs **DEFIANT — PALMER JOHNSON** from our catalogue. Presently, at Shestakov Yacht Sales Inc., we have a wide variety of yachts available on our sale's list. We also work in close contact with all the big yacht manufacturers from all over the world.

If you would like to buy a yacht **DEFIANT — PALMER JOHNSON** or would like help answering any questions concerning purchasing, selling or chartering a yacht, please call **+1(954)274-4435**

---

# TABLE OF CONTENTS

---

|                              |   |
|------------------------------|---|
| TABLE OF CONTENTS            | 2 |
| SPECIFICATIONS               | 3 |
| Overview                     | 3 |
| Basic Information            | 3 |
| Dimensions                   | 4 |
| Speed, Capacities and Weight | 4 |
| Accommodations               | 4 |
| Hull and Deck Information    | 4 |
| Engine Information           | 4 |
| PHOTOS                       | 5 |
| CONTACTS                     | 9 |
| Contact details              | 9 |
| Telephones                   | 9 |
| Office hours                 | 9 |
| Address                      | 9 |

---

# SPECIFICATIONS

---

## Overview

---

### Introduction

DEFIANT is a 41.45-meter Palmer Johnson motor yacht that was delivered in 2012. She is part of the PJ 135 series and features an aluminum hull. The yacht's interior and exterior were designed by Nuvolari & Lenard, and Eric Küster handled the decoration. DEFIANT combines high performance, smooth lines, exceptional living spaces, and deluxe accommodations.

### Accommodation

DEFIANT can accommodate up to 12 guests in five generous cabins. The master suite is full-beam and features a private balcony. The other four cabins are all en suite. The main saloon is spacious and open, with comfortable seating and a chic formal dining area.

### Deck

The deck areas on DEFIANT are perfect for both relaxing and entertaining. The wide beam of 8.38 meters allows for a large sundeck as well as an impressive flybridge, which includes a spa pool and various seating options. The main deck also has an alfresco dining area perfect for private dining or entertaining guests.

### Performance

DEFIANT is powered by twin 3,650hp MTU engines, which give her a range of 1,700 nautical miles at 12 knots. She is also fitted with Trac at-anchor stabilizers.

### Summary

DEFIANT is a luxurious and well-appointed motor yacht that is perfect for both cruising and entertaining. She offers guests a high level of comfort and performance, and her stunning design makes her a truly eye-catching vessel.

---

## Basic Information

---

**Category:** Semi-Displacement

**Sub Category:** Semi-Displacement

**Model Year:** 2012

**Year Built:** 2012

**Country:** United States

---

## Dimensions

---

**LOA:** 136' (41.45mm)

**Beam:** 27.49

**Max Draft:** 6' 2" (1.86mm)

---

## Speed, Capacities and Weight

---

**Cruise Speed:** 24 Knots Kts. (28 MPH)

**Cruise Speed Range:** 700

**Max Speed:** 28 Knots Kts. (32 MPH)

**Gross Tonnage:** 305 Pounds

**Water Capacity:** 3914 Gallons

**Holding Tank:** 569.29 Gal Gallons

**Fuel Capacity:** 10395.7 Gal Gallons

---

## Accommodations

---

**Total Cabins:** 5

**Sleeps:** 12

**Crew Cabin:** 8

**Crew Berths:** 8

---

## Hull and Deck Information

---

**Hull Material:** Aluminum

**Deck Material:** Teak

**Hull Configuration:** Semi-Displacement

**Exterior Designer:** Nuvolari + Lenard

**Interior Designer:** Nuvolari + Lenard

---

## Engine Information

---

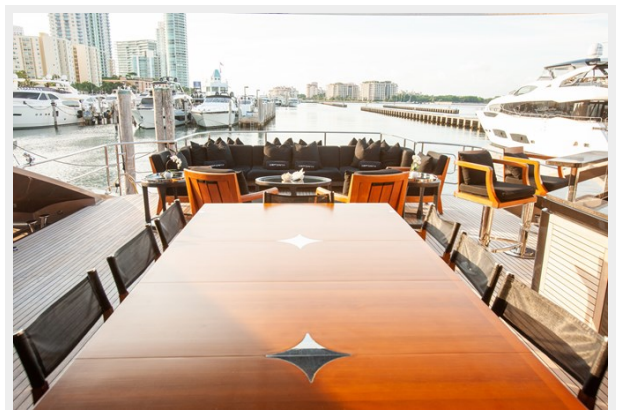
**Engines:** 2

**Manufacturer:** MTU

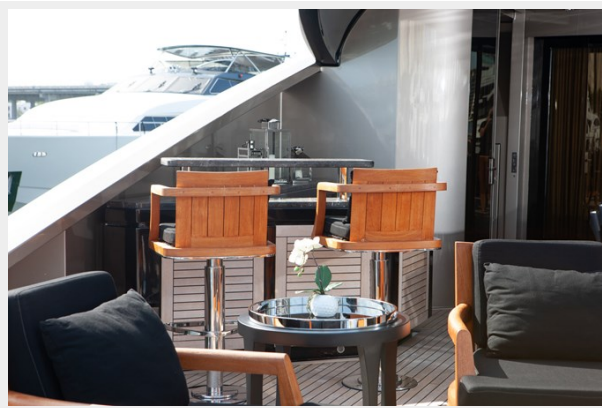
**Engine Type:** Outboard

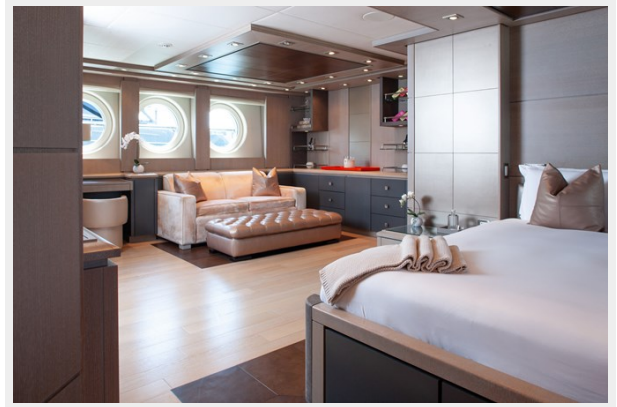
**Fuel Type:** Diesel

# PHOTOS

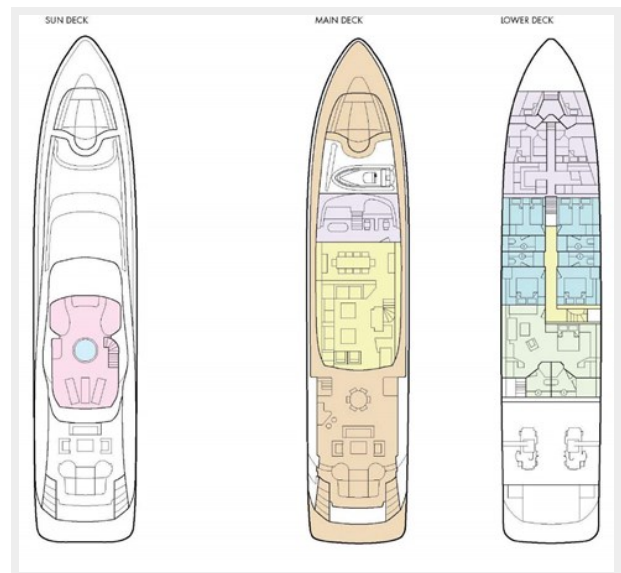














# CONTACTS

---

Andrey Shestakov, leading yacht broker of the sales department of Shestakov Yacht Sales Inc. Shestakov Yacht Sales Inc., the official representative of the Miami/Fort Lauderdale FL headquarters.

## Contact details

---

Email: [andrey@shestakovyachtsales.com](mailto:andrey@shestakovyachtsales.com)

Web: [shestakovyachtsales.com/en/](http://shestakovyachtsales.com/en/)

## Telephones

---

USA: +1(954)274-4435

## Office hours

---

Monday – Saturday: **9:00 - 21:00** EDT

Sunday: **closed**

## Address

---



Harbour Towne Marina, 850 NE 3rd St,  
STE 213, Dania, FL 33004