

HER SALT BOUYS — INTREPID POWERBOATS INC.



Builder: INTREPID POWERBOATS INC.

Year Built: 2019

Model: cruiser

Price: \$1,050,000 USD

Location: United States

LOA: 47' (14.33m)

Beam: 14

Min Draft: 2' (0.61m)

Max Draft: 3' (0.91m)

Cruise Speed: 45 Knots Kts. (52 MPH)

Max Speed: 52 Knots Kts. (60 MPH)

Our experienced yacht broker, Andrey Shestakov, will help you choose and buy a yacht that best suits your needs **Her Salt Bouys — INTREPID POWERBOATS INC.** from our catalogue. Presently, at Shestakov Yacht Sales Inc., we have a wide variety of yachts available on our sale's list. We also work in close contact with all the big yacht manufacturers from all over the world.

If you would like to buy a yacht **Her Salt Bouys — INTREPID POWERBOATS INC.** or would like help answering any questions concerning purchasing, selling or chartering a yacht, please call **+1(954)274-4435**

TABLE OF CONTENTS

TABLE OF CONTENTS	2
SPECIFICATIONS	4
Overview	4
Basic Information	7
Dimensions	7
Speed, Capacities and Weight	8
Accommodations	8
Hull and Deck Information	8
Engine Information	8
PHOTOS	9
47 intrepid port with new custom cockpit cover	9
bow with sundpad	9
cockpit work station	9
cockpit2	9
cockpitdoor	10
electric panel	10
flir and spotlight	10
galley2	10
galleyrefrigerator	11
galleysink	11
grill	11
guestbdrm	11
hardtopbluelights	12
head	12
headsink	12
helm	12
insidelookingforward	13
joystick	13

looking aft	13
master	13
masterstateroom	14
quad425	14
refrigerator	14
settee	14
shower	15
cockpit sink	15
steps	15
galley stove	15
IMG_2624	16
IMG_2626	16
IMG_2630	16
CONTACTS	17
Contact details	17
Telephones	17
Office hours	17
Address	17

SPECIFICATIONS

Overview

INTREPID FACTORY INSTALLED OPTIONS

Hullside Door Swing in With FOLD OUT LADDER

Wraparound Windshield Glass w/Stainless Steel Frame

Port Lights in Hullside

Thru Bow Anchor Chute w/ Stainless Bow Plate

Digital Trim Tab Indicators with Auto Retract

Bilge Pumps

Shore Power with Battery Charger

Bow Thruster

Windlass Anchor system

Polished Stainless Steel Claw Anchor

Dual System Air Condit. for Cabin (18,000 BTU for Salon & Head & 7,000 BTU unit for Master Stateroom)

GLENDENING 50 AMP CABLE MASTER W/50' SHORE CORD

Triple or Quad Engine Flush System

Upgrade shore power to 230v/60hz/50amp power upgrade for a/c h/w & stove

24,000 BTU A/C w/ Split System

ELECTRIC GRILL AND SINK (HOT AND COLD) WITH CORIAN COVER AND SPLIT

FIBERGLASS LID AND 2 CUP HOLDERS

Fold Under Swim Ladder

Cockpit Coaming Bolster

Electric Head with Holding Tank and Overboard Discharge

Freshwater Supply to Electric Head

Microwave Oven

Transom Shower (hot and cold)

Cockpit Lights LED

Fiberglass Folding Rear Bench Seat

Electric Stove Top

Cabin Sole Wood Flooring

Freshwater Washdown in Windlass Compartment

Side by side refrigerator/Freezer

Dockside Fresh Water Inlet

Wood Veneered Cabinetry

Electric Hot Water Heater

Bedspreads and Pillow Shams

Solid Surface Counter Tops - Galley and Head Compartment

Baitwell in Cockpit Sole with Macerator (Lighted)

Mate Series Rod/Cup Holder (ea)

Seakeeper Gyro Stabilizer - #6

Raw Water Washdown

Custom Fiberglass arch

LED Spreader Light on Aft Of Top

Upgrade Generator from 8KW to 12 KW 230V/60HZ/50 AMP with 25gal fuel tank. NEW
10/1/2023

Powder Coat All Aluminum (INCLUDES BOWRAIL)

AFT ELECTRIC SUNSHADE SYSTEM (INTEGRATED)

Custom electric forward/aft helm seat with bolsters and station like 47-150,

Largest side by side fridge drawers to fit under helm seat, outlet, handrail, cup holders on

backside of helm, foot rests, color to be all mystic white, make bench seat leveled, no slant

Removable pickle barrel baitwell center aft cockpit

Boot, pin, Intrepid logo to be Imron F0901 silver grey

Upholstery configuration to be flat design with horizontal stripe, main to be mystic white, horizontal stripe to be Greystone US 425 spirit millennium

Upgrade to Obecchi Veneer Cabin Cabinets

Upgrade Cabin TV to the largest available

10 cleats on GUNWALE

Move the STD fusion black box located in forward cabin closet to guest stateroom closet, behind closet walls, leave the actual remote in the standard location

Run a 50+ foot HDMI cord from cabin TV to guest closet. Coil excess wire behind closet walls

5 Rod holders on transom wall

Install Transducer - Customer Supplied, Delivered to Sean Wilson

Move wipers and seakeeper panels to STBD wall, side by side, as high as possible

Move sureshade switch to end of L-shape bench seat near steps

Electric Grill & Sink (hot&cold) with Corian counter & split Fiberglass lid molded on Aft of L-Seat, Includes 2 Cup Holders

ELECTRONICS PACKAGE

GPSMAP 8622 Multifunction Display with BlueChart g2 Charts

GPSMAP 8622 Multifunction Display with BlueChart g2 Charts

Black plexi black out panel for dash
Garmin Card Reader
Chart AccNMEA 0183 Cable for
Garmin 6m NMEA 2000 Cable
5m Garmin Network Cable
6ft Garmin Network Cable
GSD 24 Fish Box
Garmin GMR 424 XHD2 4KW Pedestal w/4ft Array Radar
Garmin 1KW 20 degree Titled Element Transducer
Garmin NMEA 2000 starter kit
Garmin XM53 Weather Antenna interfaced to audio system
Dual Electric Horn includes momentary switch and weather boot
Flir Night Vision Camera MD-625
Flir 2 3/8" vertical stand and custom 1" polished white starboard piece
Shakespeare 8' VHF Antenna
Shakespeare 8' AM / FM Entertainment Band Antenna
Mounts for the Antennas
Underwater Light Blue/White Colors
Icom BB400 VHF Radio

Black Box w/Grey Command MicVHF Cable Hideaway TrimFusion MS-RA770 Apollo Series Touch Screen Marine Stereo with bluetooth JL Audio 7.7 M-Series Cockpit Coaxial Speakers (Pair)JL Audio 8.8 M-Series Cockpit Coaxial Speakers (Pair)JL Audio M10IB5 10" Infinite Baffle Subwoofer SpeakerJL Audio M800/8 Channel Marine AmplifierJL Audio M400/4 Channel Marine AmplifierSirius Tuner, Antenna, and Stainless MountLow Voltage Battery Cut Off box for sound systemInterphase engines to Garmin systemInterphase Fusion stereo to Garmin systemKVH Satellite TV 5 AntennaDirectTV Receivers interphase with Garmin and Stereo systems.32" Smart TV 1080p with removable hanging system for cockpitHDMI Splitter 1 In and 2 OutCockpit TV GFI and TV inletTV mountsGFI stainless steal receptacle water proof coverGOST Tracker Insurance PackageIntergrade both stereo units (cabin/cockpit)White VHF low profile external speaker installed in cockpit wallGarmin GHP Reactor Yamaha AutoPilot with compass, N-2K extension cables, Yamaha Extension kitElectric Reel Outlet. Standard 30 Amp Hubbell Receptacles, Waterproof Covers and boxes. Heavy duty wiring and Dual 30 Amp Breaker.Fusion Remote NMEA 2000 for console

Redhat Wifi Booster

Engines serviced 500hr June 2023

Bottom painted June 2023

New cockpit canvas cover June 2023

Installation Materials:Waterproof Heat shrink connectors, Lugs, Antenna Mounts, Adhesives, TY Wraps, All Stainless Steel Hardware, Wire and Cabling, plastic to cover complete vessel, stereo RCAs and Ys, Blue Seas Waterproof 50 AMP, Blue Seas Waterproof 70 AMP, Blue Seas Waterproof 80 AMP

Basic Information

Category: cruiser

Sub Category: Sport Cruiser

Model Year: 2019

Year Built: 2019

Country: United States

Dimensions

LOA: 47' (14.33mm)

Beam: 14

Min Draft: 2' (0.61mm)

Max Draft: 3' (0.91mm)

Speed, Capacities and Weight

Cruise Speed: 45 Knots Kts. (52 MPH)

Cruise Speed Range: 300

Max Speed: 52 Knots Kts. (60 MPH)

Max Speed Range: 240 Kts.

Gross Tonnage: 20 Pounds

Water Capacity: 150 Gallons

Holding Tank: 15 Gal Gallons

Fuel Capacity: 500 Gal Gallons

Accommodations

Total Cabins: 3

Total Berths: 6

Sleeps: 6

Total Heads: 2

Crew Cabin: 2

Crew Berths: 2

Crew Heads: 1

Hull and Deck Information

Hull Material: Fiberglass

Deck Material: Teak

Hull Configuration: Monohull

Hull Designer: Flavio Constantino

Interior Designer: John Adams

Engine Information

Engines: 4

Manufacturer: Yamaha

Engine Type: Outboard

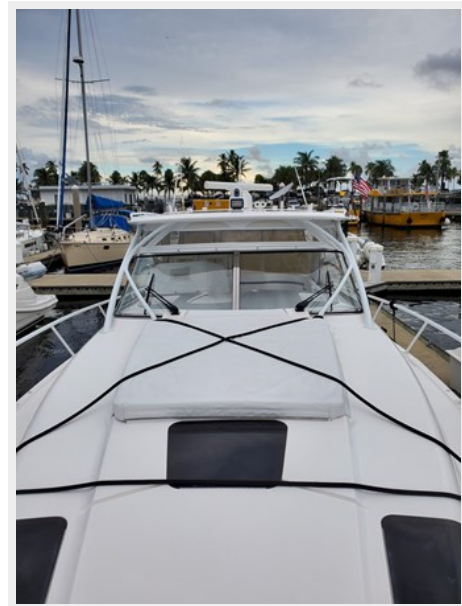
Fuel Type: Gas

PHOTOS

47 intrepid port with new custom cockpit cover



bow with sundpad



cockpit work station



cockpit2



cockpitdoor



electric panel



flir and spotlight



galley2



galleyrefrigerator



galleysink



grill



guestbdm



hardtopbluelights



head



headsink



helm



insidelookingforward



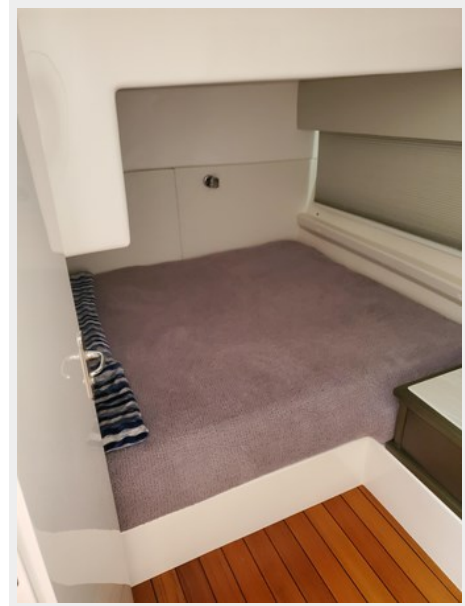
joystick



looking aft



master



masterstateroom



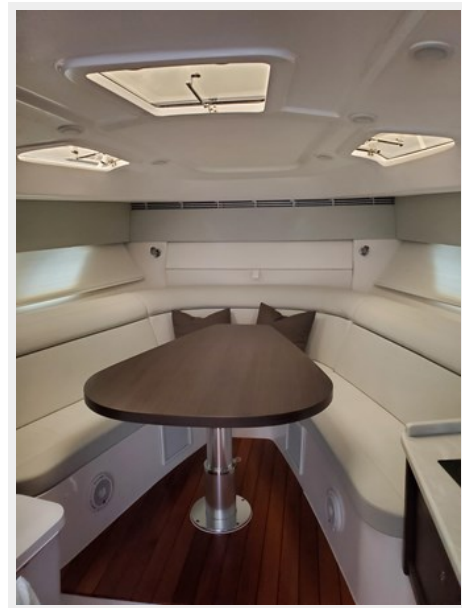
quad425



refrigerator



settee



shower



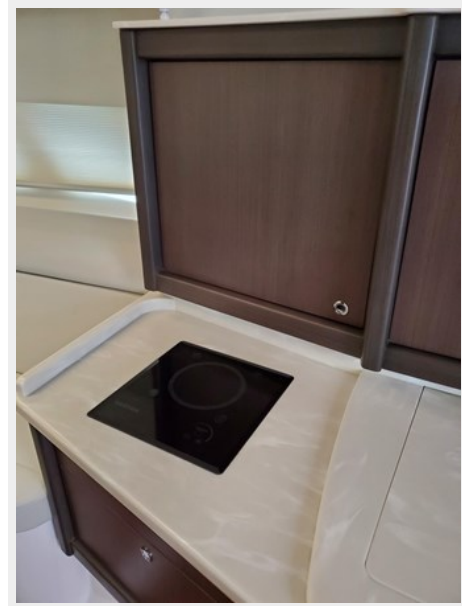
cockpit sink



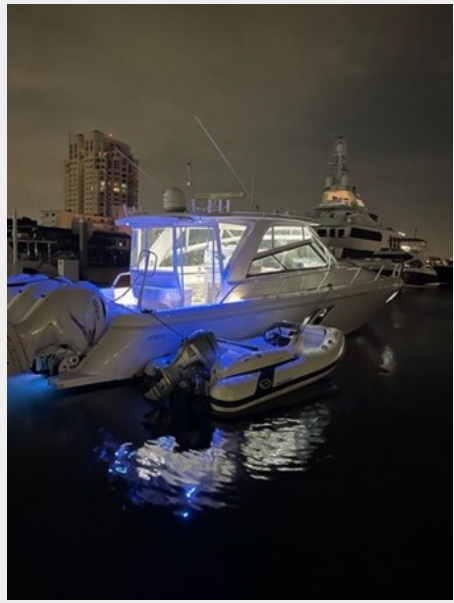
steps



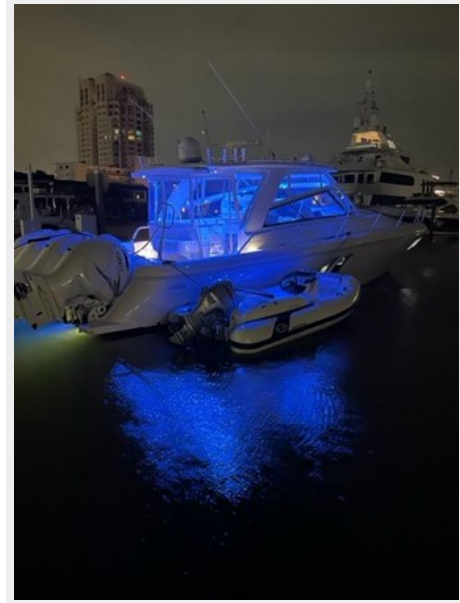
galley stove



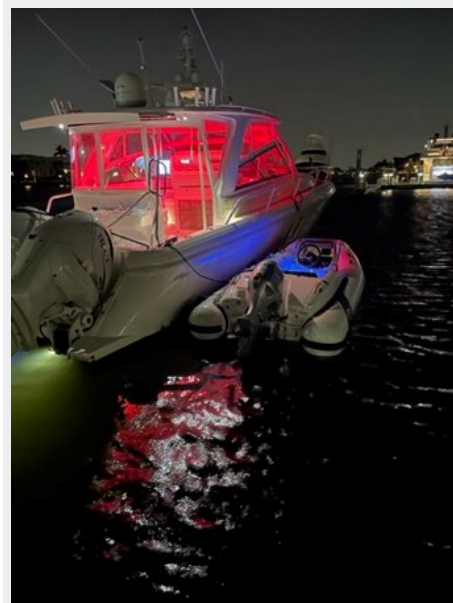
IMG_2624



IMG_2626



IMG_2630



CONTACTS

Andrey Shestakov, leading yacht broker of the sales department of Shestakov Yacht Sales Inc. Shestakov Yacht Sales Inc., the official representative of the Miami/Fort Lauderdale FL headquarters.

Contact details

Email: andrey@shestakovyachtsales.com

Web: shestakovyachtsales.com/en/

Telephones

USA: +1(954)274-4435

Office hours

Monday – Saturday: **9:00 - 21:00** EDT

Sunday: **closed**

Address



Harbour Towne Marina, 850 NE 3rd St,
STE 213, Dania, FL 33004