

FAMILY — CD HOLMES



Builder: CD HOLMES

Year Built: 1969

Model: expedition yacht

Price: €950,000 EUR

Location: France

LOA: 78' 5" (23.9mm)

Beam: 22.3

Max Draft: 8' 3" (2.5mm)

Cruise Speed: 7 Knots Kts. (8 MPH)

Max Speed: 9 Knots Kts. (10 MPH)

Our experienced yacht broker, Andrey Shestakov, will help you choose and buy a yacht that best suits your needs **FAMILY — CD HOLMES** from our catalogue. Presently, at Shestakov Yacht Sales Inc., we have a wide variety of yachts available on our sale's list. We also work in close contact with all the big yacht manufacturers from all over the world.

If you would like to buy a yacht **FAMILY — CD HOLMES** or would like help answering any questions concerning purchasing, selling or chartering a yacht, please call **+1(954)274-4435**

TABLE OF CONTENTS

TABLE OF CONTENTS	2
SPECIFICATIONS	3
Overview	3
Basic Information	3
Dimensions	3
Speed, Capacities and Weight	4
Accommodations	4
Hull and Deck Information	4
Engine Information	4
PHOTOS	5
CONTACTS	9
Contact details	9
Telephones	9
Office hours	9
Address	9

SPECIFICATIONS

Overview

Dive into the story of M/Y Family, a maritime vessel with a rich history. Part of a series of 64 Fleet Tenders commissioned by the British Royal Navy between 1963 and 1982, she was built in 1969 by C.D. Holmes on River Hull, UK. Designed for North Seas operations, she could carry 100 passengers or 25 tons of cargo. Originally a service vessel, she has been converted into a family yacht that emphasizes both comfort and practicality. Known for her maritime exploration capabilities & fuel efficiency, M/Y Family represents a balance between durability and environmental consideration.

Following interior improvements, the yacht now offers a welcoming ambiance for passengers of all ages. Her outdoor spaces provide tranquil retreats with captivating ocean views. Fully operational and adaptable, M/Y Family is suited for immediate exploration or ambitious restoration projects, showcasing both versatility and innovation.

Explore the legacy & potential of M/Y Family, a testament to maritime prowess & adaptability.

Basic Information

Category: expedition yacht

Sub Category: Expedition or Explorer

Model Year: 1969

Year Built: 1969

Refit Type: Full conversion

Country: France

Dimensions

LOA: 78' 5" (23.9mm)

Beam: 22.3

Max Draft: 8' 3" (2.5mm)

Speed, Capacities and Weight

Cruise Speed: 7 Knots Kts. (8 MPH)

Max Speed: 9 Knots Kts. (10 MPH)

Gross Tonnage: 126 Pounds

Water Capacity: 3750 Gallons

Holding Tank: 792.52 Gal Gallons

Fuel Capacity: 4755.1 Gal Gallons

Fuel Consumption: 5.55 Gal Gallons

Accommodations

Total Cabins: 4

Sleeps: 8

Total Heads: 4

Crew Cabin: 2

Crew Berths: 2

Crew Heads: 1

Hull and Deck Information

Hull Material: Steel

Hull Configuration: Full Displacement

Hull Color: Black & White

Hull Designer: Richard Dunston

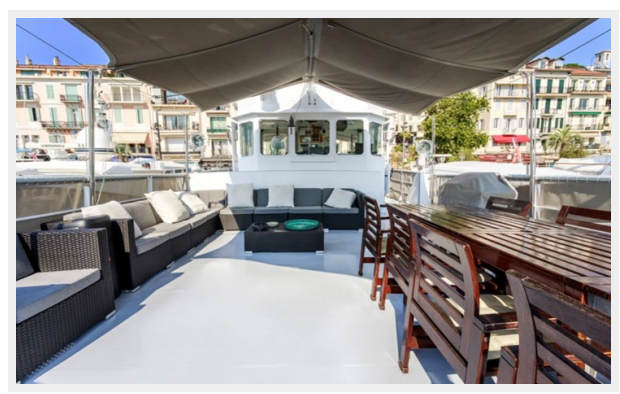
Engine Information

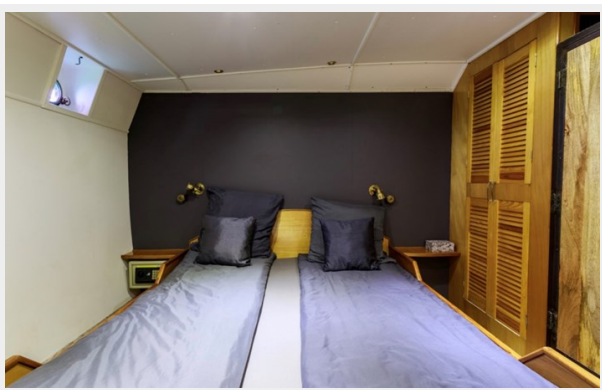
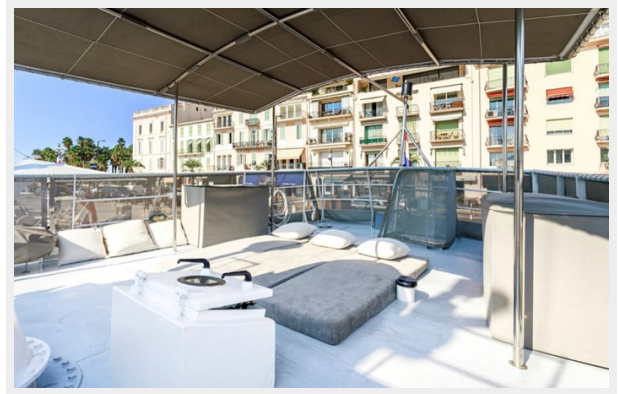
Engines: 1

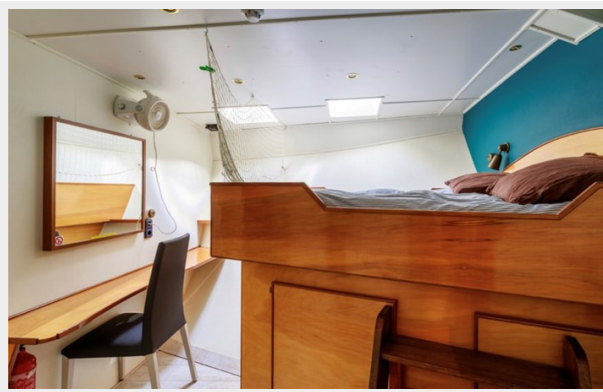
Manufacturer: Lister Blackstone

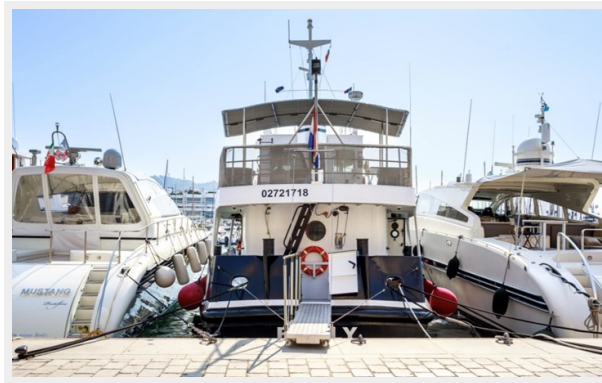
Engine Type: Inboard

PHOTOS









CONTACTS

Andrey Shestakov, leading yacht broker of the sales department of Shestakov Yacht Sales Inc. Shestakov Yacht Sales Inc., the official representative of the Miami/Fort Lauderdale FL headquarters.

Contact details

Email: andrey@shestakovyachtsales.com

Web: shestakovyachtsales.com/en/

Telephones

USA: +1(954)274-4435

Office hours

Monday – Saturday: **9:00 - 21:00** EDT

Sunday: **closed**

Address



Harbour Towne Marina, 850 NE 3rd St,
STE 213, Dania, FL 33004