

OBSESSION — SUNSEEKER



Builder: SUNSEEKER

Year Built: 2002

Model: Motor Yacht

Price: PRICE ON APPLICATION

Location: United States

LOA: 76' (23.16m)

Beam: 17.83

Max Draft: 4' 11" (1.5m)

Cruise Speed: 28 Knots Kts. (32 MPH)

Max Speed: 32 Knots Kts. (37 MPH)

Our experienced yacht broker, Andrey Shestakov, will help you choose and buy a yacht that best suits your needs **OBSESSION — SUNSEEKER** from our catalogue. Presently, at Shestakov Yacht Sales Inc., we have a wide variety of yachts available on our sale's list. We also work in close contact with all the big yacht manufacturers from all over the world.

If you would like to buy a yacht **OBSESSION — SUNSEEKER** or would like help answering any questions concerning purchasing, selling or chartering a yacht, please call **+1(954)274-4435**

TABLE OF CONTENTS

TABLE OF CONTENTS	2
SPECIFICATIONS	4
Overview	4
Basic Information	4
Dimensions	4
Speed, Capacities and Weight	4
Accommodations	4
Hull and Deck Information	5
Engine Information	5
PHOTOS	6
Port Aft Deck	6
Aft Deck	6
Aft Deck	6
Aft Deck	6
Salon	6
Salon Dinette	6
Salon	7
Forward Helm / Lower Stairway	7
Helm Settee	7
Helm	7
Helm	7
Helm	8
Salon Looking Aft	8
Owner Stateroom	8
Owner Stateroom	8
Owner Stateroom	8
Owner Stateroom	8
Owner Stateroom	9

Owner Ensuite	9
Forward Stateroom	9
Twin Stateroom	9
Twin Stateri	10
Guest Head	10
Lower	10
Lower Salon	10
Lower Salon	10
Lower Salon	10
Galley	11
Foredeck	11
Swim Platform	11
Engine Room	11
Engine Room	11
Engine Room	12
DSC05376 copy	12
DSC05533	12
CONTACTS	13
Contact details	13
Telephones	13
Office hours	13
Address	13

SPECIFICATIONS

Overview

Motor Yacht OBSESSION is a 76' 7" (23.37m) yacht for sale, built and launched by yacht builder Sunseeker and delivered in 2002. This vessel sleeps up to 6 guests in 3 staterooms and has accommodations for 1 crew member in 1 cabin.

Basic Information

Category: Motor Yacht

Model Year: 2002

Year Built: 2002

Country: United States

Dimensions

LOA: 76' (23.16m)

Beam: 17.83

Max Draft: 4' 11" (1.5m)

Speed, Capacities and Weight

Cruise Speed: 28 Knots Kts. (32 MPH)

Max Speed: 32 Knots Kts. (37 MPH)

Water Capacity: 300 Gallons

Fuel Capacity: 1321 Gal Gallons

Accommodations

Total Cabins: 3

Sleeps: 6

Total Heads: 3

Crew Cabin: 1

Hull and Deck Information

Hull Material: Fiberglass

Hull Configuration: Deep Vee

Exterior Designer: Sunseeker

Engine Information

Engines: 2

Manufacturer: MAN

Engine Type: Inboard

Fuel Type: Diesel

PHOTOS

Port Aft Deck



Aft Deck



Aft Deck



Aft Deck



Salon



Salon Dinette



Salon



Forward Helm / Lower Stairway



Helm Settee



Helm



Helm



Helm



Salon Looking Aft



Owner Stateroom



Owner Stateroom



Owner Stateroom



Owner Stateroom



Owner Stateroom



Owner Ensuite



Forward Stateroom



Twin Stateroom



Twin Stateri



Guest Head



Lower



Lower Salon



Lower Salon



Lower Salon



Galley



Foredeck



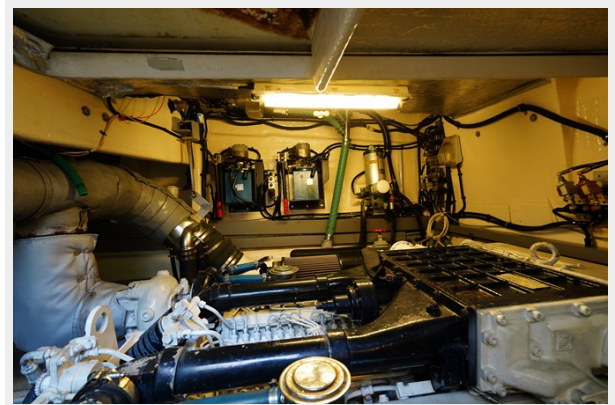
Swim Platform



Engine Room



Engine Room



Engine Room



DSC05376 copy



DSC05533



CONTACTS

Andrey Shestakov, leading yacht broker of the sales department of Shestakov Yacht Sales Inc. Shestakov Yacht Sales Inc., the official representative of the Miami/Fort Lauderdale FL headquarters.

Contact details

Email: andrey@shestakovyachtsales.com

Web: shestakovyachtsales.com/en/

Telephones

USA: +1(954)274-4435

Office hours

Monday – Saturday: **9:00 - 21:00** EDT

Sunday: **closed**

Address



Harbour Towne Marina, 850 NE 3rd St,
STE 213, Dania, FL 33004