

PROJECT NIRVANA — SOYASLAN MARINE



Builder: SOYASLAN MARINE

Year Built: 2024

Model: Motor Yacht

Price: €9,500,000 EUR

Location: Turkey

LOA: 131' 1" (39.95m)

Beam: 29.52

Max Draft: 7' 7" (2.3m)

Cruise Speed: 12 Knots Kts. (14 MPH)

Max Speed: 14 Knots Kts. (16 MPH)

Our experienced yacht broker, Andrey Shestakov, will help you choose and buy a yacht that best suits your needs **PROJECT NIRVANA — SOYASLAN MARINE** from our catalogue. Presently, at Shestakov Yacht Sales Inc., we have a wide variety of yachts available on our sale's list. We also work in close contact with all the big yacht manufacturers from all over the world.

If you would like to buy a yacht **PROJECT NIRVANA — SOYASLAN MARINE** or would like help answering any questions concerning purchasing, selling or chartering a yacht, please call **+1(954)274-4435**

TABLE OF CONTENTS

TABLE OF CONTENTS	2
SPECIFICATIONS	3
Overview	3
Basic Information	3
Dimensions	3
Speed, Capacities and Weight	4
Accommodations	4
Hull and Deck Information	4
Engine Information	4
PHOTOS	5
CONTACTS	11
Contact details	11
Telephones	11
Office hours	11
Address	11

SPECIFICATIONS

Overview

Presenting the exceptional 131' (39.95m) vessel, PROJECT NIRVANA by Soyaslan. Scheduled for delivery in 2024, PROJECT NIRVANA, a 40-meter superyacht, exudes a harmonious fusion of grace and adaptability. The sleek exterior design showcases a Bureau Veritas-certified robust steel hull, showcasing the essence of an explorer yacht. Meanwhile, the uniquely vertical bow adds an element of refined charm. Inside, PROJECT NIRVANA opens its doors to a sanctuary of comfort, accommodating up to 14 fortunate guests. The main deck serves as an inviting stage, featuring a spacious salon and a dining area embraced by floor-to-ceiling windows that flood the interior with natural radiance. An expansive window adjoining the dining area creates a seamless connection between guests and the endless horizon of the sea. Boasting an impressive cruising range of 5,000 nautical miles at a leisurely pace of 10 knots, PROJECT NIRVANA is engineered to venture into the world's most remote corners. Unmatched stability, remarkable seakeeping capabilities, and nimble manoeuvring ensure a voyage of unparalleled exploration.

Key Features:- Solid, reinforced steel hull for exceptional durability- Anticipated delivery within 13-15 months post-contract signing- Currently 60% completed, offering the opportunity for a fully customized interior- Flexibility in adjusting vessel length to meet your specific preferences- Embrace the allure of embarking on new horizons with PROJECT NIRVANA. Don't miss the chance to be part of this extraordinary journey.

Basic Information

Category: Motor Yacht

Model Year: 2024

Year Built: 2024

Country: Turkey

Dimensions

LOA: 131' 1" (39.95mm)

LWL: 130' 8" (39.81mm)

Beam: 29.52

Max Draft: 7' 7" (2.3mm)

Speed, Capacities and Weight

Cruise Speed: 12 Knots Kts. (14 MPH)

Cruise Speed Range: 3500

Max Speed: 14 Knots Kts. (16 MPH)

Gross Tonnage: 380 Pounds

Water Capacity: 11000 Gallons

Fuel Capacity: 8453.51 Gal Gallons

Accommodations

Total Cabins: 6

Sleeps: 12

Crew Cabin: 9

Crew Berths: 9

Hull and Deck Information

Hull Material: Steel

Hull Designer: Soyaslan Marine

Exterior Designer: Soyaslan Design

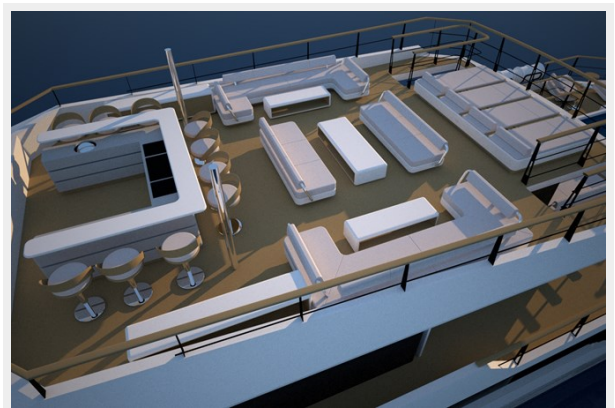
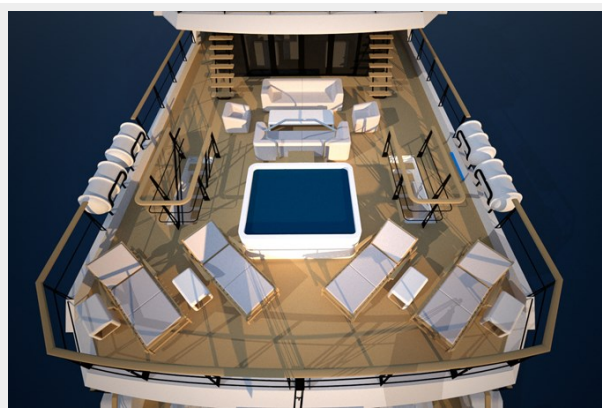
Interior Designer: Soyaslan Design

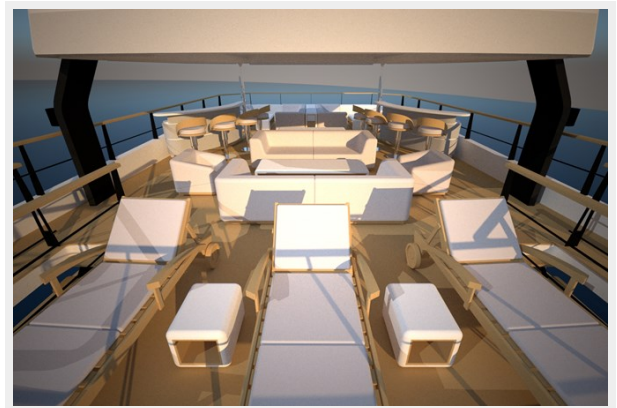
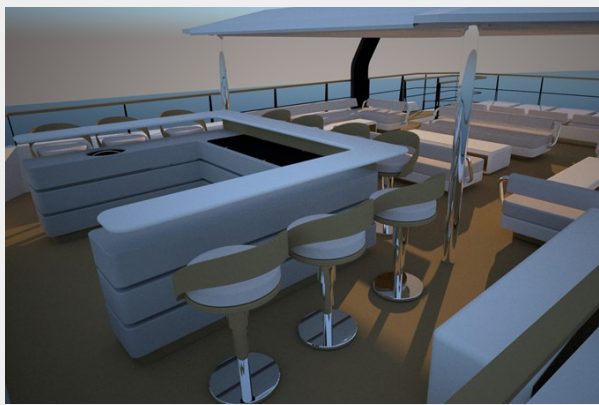
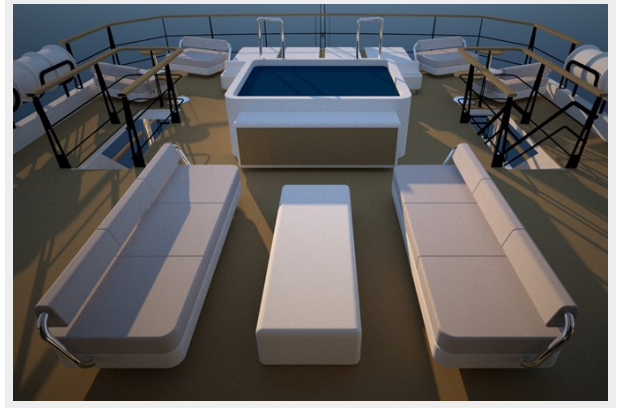
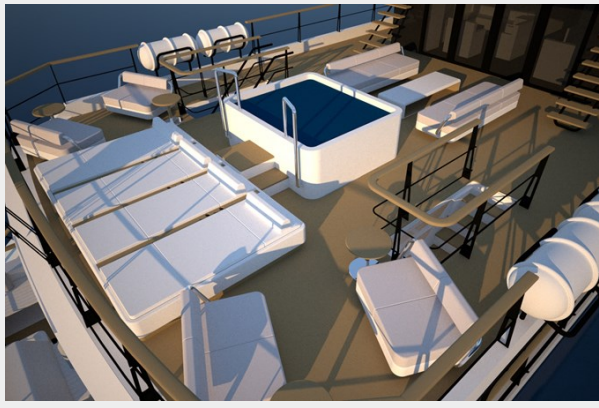
Engine Information

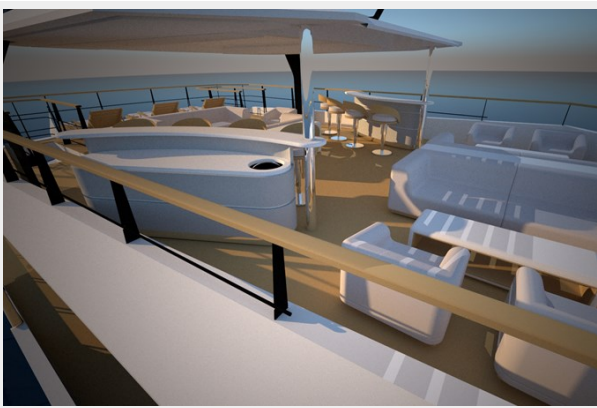
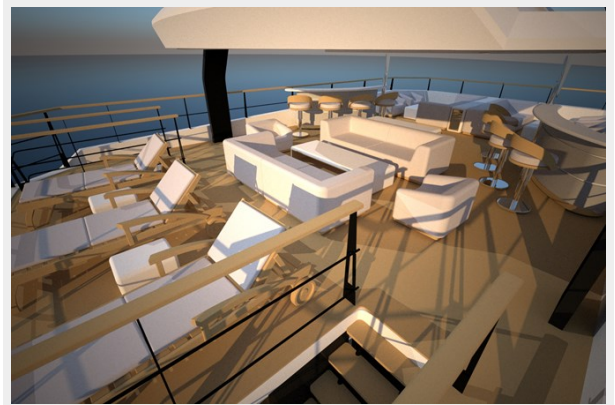
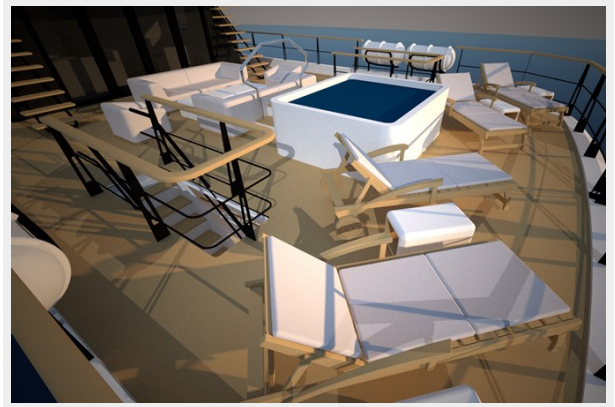
Engines: 2

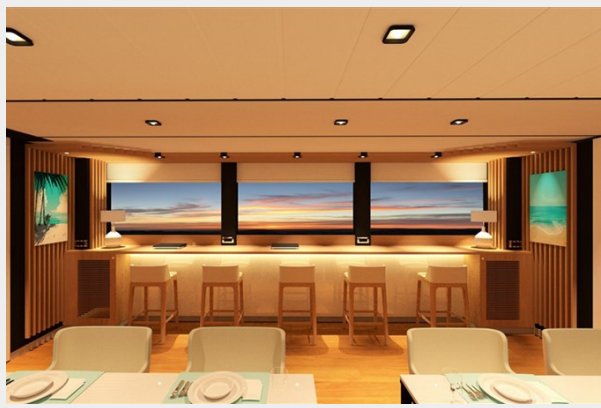
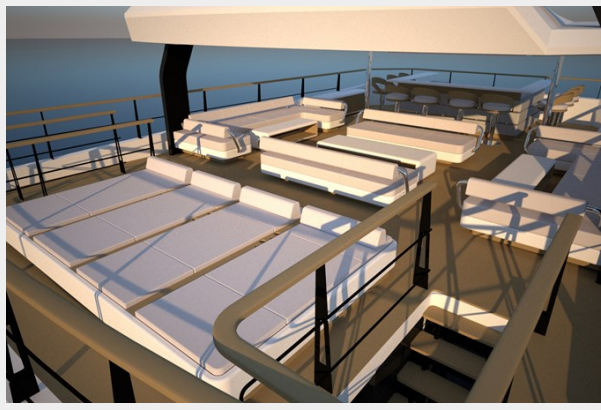
Manufacturer: DOOSAN

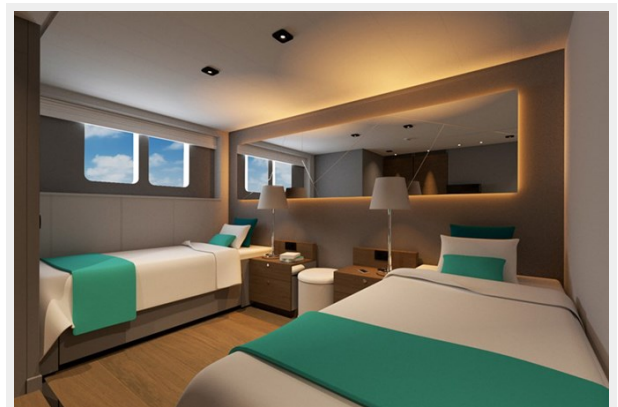
PHOTOS













CONTACTS

Andrey Shestakov, leading yacht broker of the sales department of Shestakov Yacht Sales Inc. Shestakov Yacht Sales Inc., the official representative of the Miami/Fort Lauderdale FL headquarters.

Contact details

Email: andrey@shestakovyachtsales.com

Web: shestakovyachtsales.com/en/

Telephones

USA: +1(954)274-4435

Office hours

Monday – Saturday: **9:00 - 21:00** EDT

Sunday: **closed**

Address



Harbour Towne Marina, 850 NE 3rd St,
STE 213, Dania, FL 33004